

MODEL A-7

7,000 LB. ASYMMETRIC TWO POST LIFT

THE LIFT YOU CAN'T WEAR OUT



**WHERE
OFF-CENTER
IS RIGHT
ON TARGET**



TO MEET THE ONE AND ONLY NATIONAL SAFETY STANDARD FOR VEHICLE LIFTS

Americas Best Lift Investment...

Still proudly designed, welded and manufactured in the U.S.A.



MOHAWK

WHEN YOU SEE THE DIFFERENCES,

YOU WILL BUY A MOHAWK

MOHAWK ASYMMETRIC, CLEAR FLOOR DESIGN

- Mohawk columns are constructed of 3/4" thick C-shaped forklift masts, for a **lifetime** of trouble-free service.
- Each Mohawk carriage rolls on 8 **double-sealed, self-lubricating steel ball bearing rollers**. Not plastic slide blocks. (see picture 8)
- Two large heavy duty cylinders make for safer, steadier lifting than single cylinder lifts or models with tiny cylinders. (see picture 9)
- **Height adjustable** overhead stainless steel hydraulic lines can be set at any height to accommodate tall trucks and vans. Optional in-ground hydraulic lines available. (see picture 12)
- **4" low profile swing arms** fit under the lowest riding sports cars.
- 3" and 6" stackable truck adaptors are included as standard equipment. (see picture 5)
- **Adjustable column width** by lengthening the overhead steal hydraulic lines.

A-7 hydraulic adjustable height overhead lines fit in low ceiling bays.

MOHAWK'S PATENTED INDUSTRY LEADING SAFETY SYSTEMS

- Mohawk lifts feature **all position** mechanical safety locks in **both columns**, starting at the ground, to full lifting height of 6'. (see picture 4)
- Patented infinite position, **internal** hydraulic safeties, **backed** by external pressure compensated flow controls and velocity fuse valving.
- Swing arm restraints **automatically** engage upon lifting, and **automatically** disengage when the vehicle has been fully lowered.
- **The best and most inclusive warranty** in the lift business, 25 years structural, 10 year mechanical, plus limited lifetime cylinder seal warranty. **Mohawk builds the best lifts, with the best warranty.**
- Lease/purchase plans available for 1-5 years. **Call Mohawk now!**



▲ **Open any door on any vehicle** for maximum clearance when switching from under-car to under-dash service.



▲ Rotated columns with asymmetric lift arms will lift cars, trucks or vans with maximum safety and stability. 3" and 6" stacking adaptors included means no interference between lift arms and under vehicle access.

Shown: Model A-7
Accessory
#601-440-018



Safety Weight Gauge

Shows vehicle weight, aids vehicle diagnosis, visually shows when lift is lowered on the locks

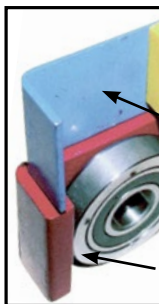


Shown: Model A-7

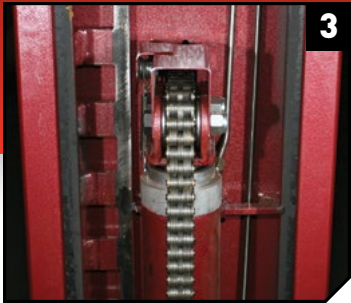
TO MEET THE ONE AND ONLY NATIONAL STANDARD FOR VEHICLE LIFTS



Six foot lifting height to bottom of arms.



▲ **FORK LIFT CH** (bottom) vs. com plastic slider (top)



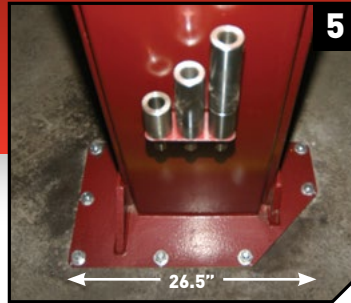
3

▲ Heavy duty post design using dual cylinders with 1 1/2" #646 leaf chain provides adjustment free maintenance for the life of the lift.



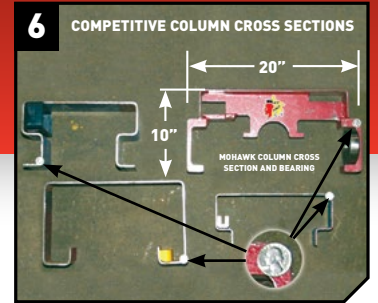
4

▲ All-position twin safeties combine positive mechanical locks backed by a hydraulic safety system for absolute security at every height.



5

▲ Mohawk's fork lift channel & bearing (top right) VS. 3 different sheet metal columns which use plastic slides. Like your fork lifts mast, Mohawk Lifts **DON'T WEAR OUT!** Note the U.S. quarters on all four pieces (for scale).



6

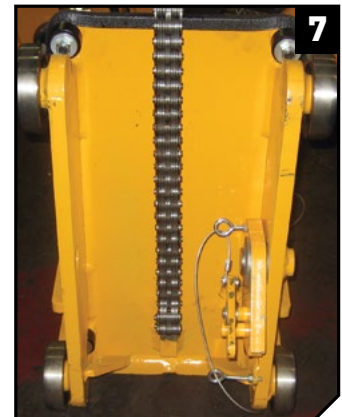
▲ Mohawk's fork lift channel & bearing (top right) VS. 3 different sheet metal columns which use plastic slides. Like your fork lifts mast, Mohawk Lifts **DON'T WEAR OUT!** Note the U.S. quarters on all four pieces (for scale).



12

Mohawk lifts **DO NOT** use height restrictive overhead cable covers that limit lifting height.

Lift shown with optional in floor lines.



7

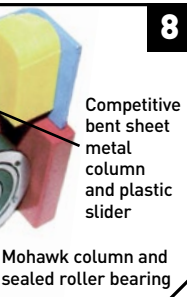
▲ Each carriage rolls on steel ball bearing rollers for a **lifetime of trouble free service.** (not plastic slide blocks)

OPERATION

- Hydraulic fluid is pumped between the two cylinders through the overhead or optional in-floor stainless steel hydraulic lines. (see picture 12) Patented hydraulic synchronization eliminates the need for restrictive height overhead covers, cables, pulleys, equalizer chains or floor plates.
- To raise the carriages Mohawk's A-7 uses heavy duty leaf chains and twin bearings located on each of the cylinders. Chain lifting eliminates the stretch, fray, maintenance and replacement associated with cable or screw lifts. (see picture 10)
- Mohawk carriages roll on double sealed, self-lubricating, steel ball bearing rollers for a lifetime of maintenance-free operation. Mohawk bearings are longer lasting, with less friction and wear than competitive lifts using plastic slide blocks that need constant greasing and maintenance. (see picture 7)

ASYMMETRIC DESIGN

- Rotated columns and offset arms allow damage-free opening of vehicle doors or convenient under-dash access whether on or off the ground. (see picture 1)
- Fits even in narrow service bays with 10'7" total width or shops with low ceilings.



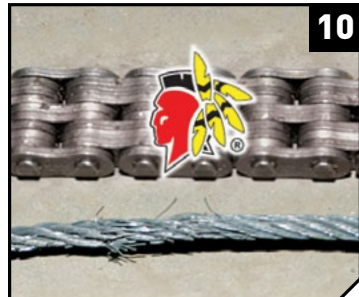
8

Competitive bent sheet metal column and plastic slider
Mohawk column and sealed roller bearing



9

▲ **LARGE 4" CYLINDERS** equal longer seal life and lower operating pressures vs. competitive cylinders.



10

▲ #646 **HIGH STRENGTH** leaf chain compared to competitive cables which fray.



11

▲ Mohawk's A-7 shown in home shop with low ceiling.

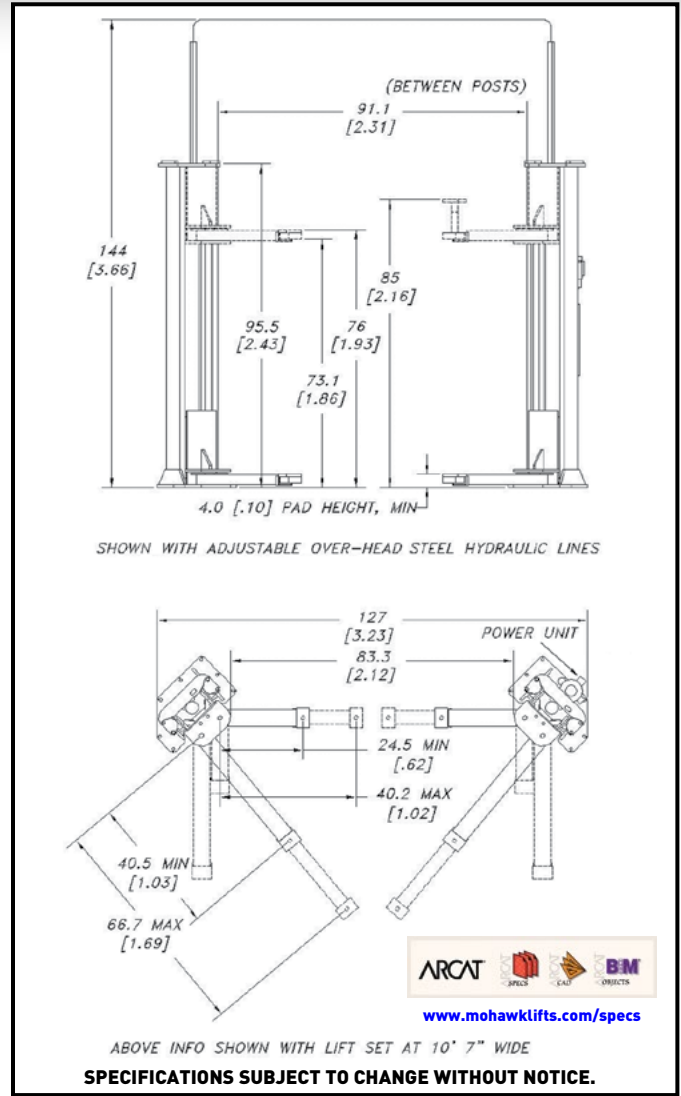
MODEL A-7 SPECIFICATIONS

- Capacity:**..... 7,000 lbs. (3175.2 kg)
- Lifting Speed:**..... 45 sec.
- Motor Rating:**..... 2 HP/208-230V, Single-phase (3Ø optional)
- Synchronization:**..... Hydraulic fluid displacement using no chains, cables, or overhead obstructions
- Arm Pad Height:**..... 4" (10.2 cm) min.
- Lifting Height (Stroke):**..... 6' (1.83 m)
- Arm Height at Full Rise:**..... 6'4" (1.93m)
- Lift Pad Height with Adaptors:**..... 7' 1" (2.16 m)
- Overall Width:**..... 10' 7" (3.23 m) to 11'1" (3.33 m)
- Width Between Posts:**..... 7' 7 1/8" to 8' 1 1/8" (2.46 m)
- Width Between Lifting Arms:**..... 6' 11 3/8" (2.12 m) to 7' 5 3/8" (2.26m)
- Column Height:**..... 7' 11 1/2" (2.43 m)
- Overhead Hydraulic Line Height:**.. 12' (3.66 m) Standard (**adjustable** to accommodate any height ceiling or routed in-floor)
- Lift Weight:**..... 2000 lbs. (907.2 kg)
- Concrete Floor Requirements:**..... 4000 psi (27579.02 kPa) mix 4 1/2" (11.43 cm) depth
- Anchoring System: Included**..... 14 3/4"x5" (1.90x12.7 cm) Wej-it bolts
- Mechanical Safety Locks:**..... **Automatic;** all position starting @ 3" (7.62 cm) off the floor
- Hydraulic Safety Systems:**..... **Automatic;** all position
- Swing Arm Restraints:**..... **Automatic** upon ascent (starting at 4")
- Cylinders:**..... 2 (1 per column)
- Drive System:**..... #646 leaf chain routed over cylinder
- 3" Truck Adaptors (stackable):**..... 4 included as standard equipment
- 6" Truck Adaptors (stackable):**..... 4 included as standard equipment
- Steel Carriage Bearings:**..... 8 per carriage, double sealed, self-lubricating
- Floor Access Between Posts:**..... Clear and unobstructed
- Warranty:**..... **25 years structural, 10 year mechanical, plus limited lifetime cylinder seal warranty**

Mohawk builds the best products with the finest materials, to the highest standards. Just compare our lifts. Our staff will assist you with a fleet evaluation, design assistance and answer any technical questions you have. We invite your calls.

Mohawk lifts are manufactured in compliance with the following standards: ALI, ANSI, ASME, AISI, ASTM, ASA, NEC, AWG, NEMA.

MEETS CURRENT NATIONAL ANSI CODE FOR LIFTS.



For more detailed product information read this book at www.mohawklifts.com.



www.facebook.com/mohawklifts



Mohawk Resources, LTD.

P.O. Box 110
65 Vrooman Ave
Amsterdam, NY 12010
(800) 833-2006
(518) 842-1431
FAX: (518) 842-1289

www.mohawklifts.com

AVAILABLE UNDER DISCOUNTED GOVERNMENT CONTRACT IN ALL 50 STATES



GSA contract #GS-07F-207AA



DISTRIBUTED BY: