

PARALLELOGRAM LIFTS

36,000, 50,000, 75,000 & 100,000 LB. CAPACITIES



- 36,000 – 100,000 lb. Capacities
- Surface or Flush Mounted
- Runway Lengths from 26' – 48'



TO MEET THE ONE AND ONLY NATIONAL SAFETY STANDARD FOR VEHICLE LIFTS



THE LIFT YOU CAN'T WEAR OUT



MOHAWK

Americas Best Lift Investment...

Still proudly designed, welded and manufactured in the U.S.A.



Bid Term: 11/16/18 - 11/15/20

MOHAWK PARALLELOGRAM



SAVING SPACE, SOLID, POWERFUL AND MAINTENANCE FREE. MOHAWK--THE NEXT GENERATION OF PARALLELOGRAM LIFTS. BUILT TO LAST!

▲ Mohawk's clear work area has no obstructive tie bar between the runways for total access (galvanized lift shown).



SAFETY LOCKS AT ALL LIFTING LEGS

POWERFUL 7 3/4" CYLINDERS

CHROME PIVOT PINS AT ALL HINGE POINTS (with self lubricating composite bearings)

HEAVY BASE DESIGN FOR MAXIMUM SUPPORT

AUTOMATIC WHEEL CHOCKS

SKID RESISTANT, DIAMOND PLATE PLATFORM AND APPROACH RAMP SURFACE

FEATURES

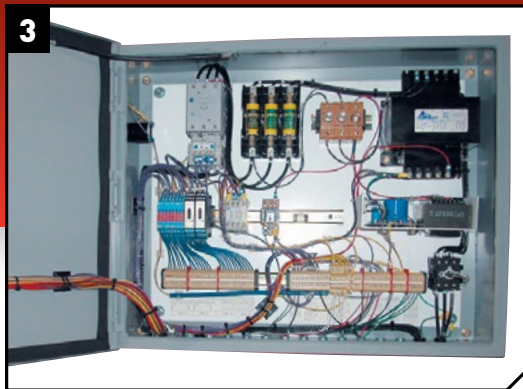
- A variety of track lengths from 26' to 48'.
- 36,000 through 100,000 lb. capacities.
- Surface mounted, recessed pit or flush mounted.
- Rolling jacks for wheels free service are available in 25,000 lb. to 50,000 lb. capacities.
- Full undervehicle access for all trucks, buses & heavy equipment.
- Full 63" lifting height on all surface mounted models.
- Full and clear, unobstructed under-vehicle access without structural cross brace, or torsion bar.
- 12 position mechanical safety locks in all legs starting at 24".
- All lifts are plumbed with air lines in the runways and wired for runway lighting without the need for separate 110V power supply required for added options.
- Available in a fully galvanized version for use in corrosive wash bay environments.

DESIGN BENEFITS

- The heaviest built parallelgram in the world for your heavy duty lifting requirements.
- Large 7 3/4" cylinders equal more power, lower PSI and longer component life.
- Self lubricating composite bearings with chrome pins at all pivot points for maintenance free operation.
- Sturdy base design minimizes stress on the shop floor, allowing installation virtually anywhere.
- No structural cross brace (torsion bar) between the platforms; eliminates a trip hazard and the antiquated technology of a mechanical brace between the platforms.
- Hydraulic safeties throughout consisting of pressure compensated flow control valves and velocity fuses.
- Designed to eliminate wear, binding and service issues of other hinged lifts.



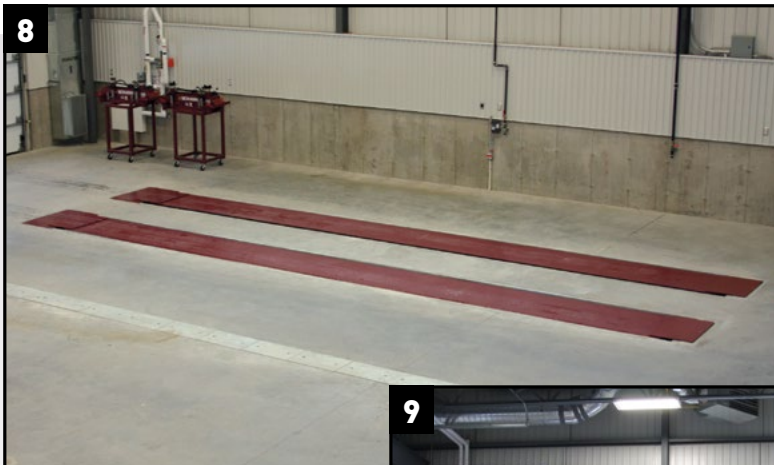
▲ Simple 3 button operation; Raise, Lower & Park (lock). 24 volt controls for operator safety, lockout standard, with easily programmed computer controls for fixed height jacks or used as a height limiter.



▲ U.S. made G.E. internal computer and U.S. control components means readily accessible parts.



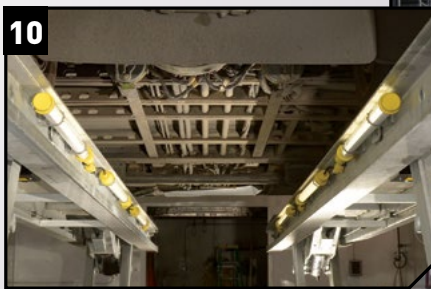
▲ Available in fully galvanized steel construction for corrosive wash bay environments.



◀ For ultimate shop space savings, the flush mounted parallelogram is installed recessed in a pit, making the lift "invisible" when not in use to maintain maximum shop work flow.



▲ Counterbalanced air-hydraulic tire dolly makes removing heavy truck tires a simple & safe one man job.



▲ Optional runway track lighting



OPTIONAL SAFETY TAPE SWITCH AVAILABLE FOR INNER AND OUTER RUNWAYS



▲ Mohawk safety latch racks are made of laser cut, high strength T-1 steel, and assure safe smooth locking at all working heights.

CONTROL SYSTEM

- Computer controlled platform synchronization is programmable for different lifting heights to accommodate various vehicles, low ceilings or different height technicians.
- Computer controlled high resolution, chain driven encoders monitor synchronous lifting and lowering 60 times per second.
- The computer's alpha-numeric LCD display performs self test on start-up, with information in plain english, with no flashing lights to be decoded.
- Control system user settings are input directly from the keypad or special settings are password protected. No outside computer is needed for reprogramming various settings.
- All platform switches and electrical sensors are located in the runway (not the shop floor). Continuous electrical runs from the lift's console eliminating splice connections in the shop floor (found on other lifts).
- 24 volt control circuit provides operator safety during control console operation.
- Manual pump and valving allow lowering in a no power situation.

Rolling Wheel Free Jack

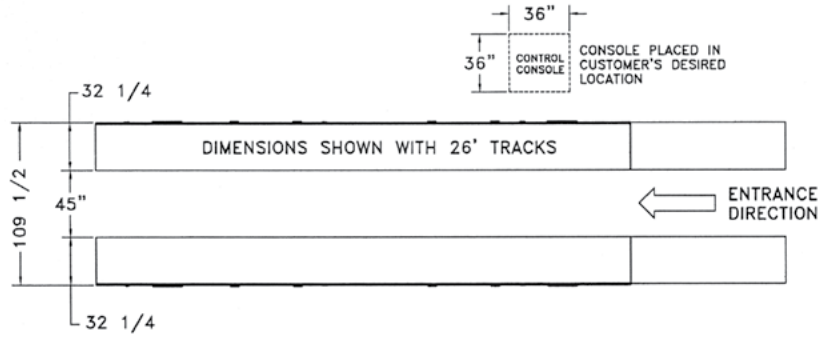
- Wheels free jack gives techs ability to service tires and brakes
- Wheels free jack can fully raise vehicle off the runways
- Optional runway track lighting illuminates the vehicle undercarriage



PARALLELOGRAM SPECIFICATIONS

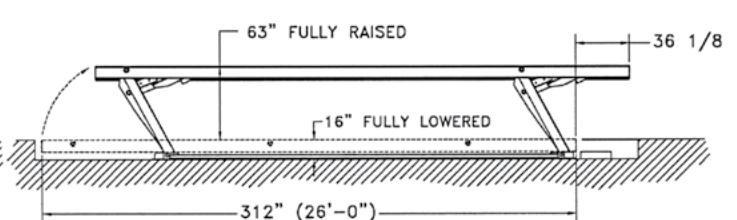
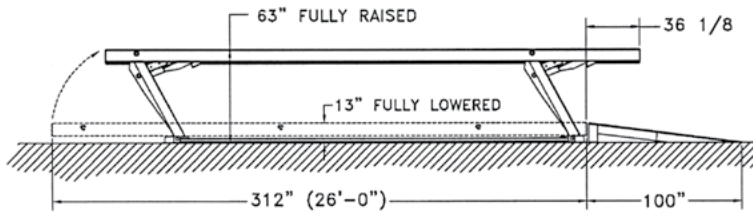


AUTOCAD specs
available online at www.mohawklifts.com/specs



SURFACE MOUNT STYLE

FLUSH MOUNT STYLE



SPECIFICATIONS SUBJECT TO CHANGE WITHOUT NOTICE. ABOVE EXAMPLE SHOWN WITH 26' LONG RUNWAYS.

Capacities	36,000, 38,000, 40,000, 45,000, 50,000, 75,000 & 100,000 lbs
Track Lengths	26', 28', 30', 32', 35', 42' or 48' (lengths available dependent on capacity)
Approach Ramp length	100" (2.54m) - standard (shorter or longer or portable available)
Overall Length (SM model)	34'6" to 56'4" (10.52 to 17.17 meters)
Lifting Height (stroke)	63" SM or 79" FM (1.60m SM or 2.00m FM)
Lowered Height	13" (.33m) on SM or 16" (.41m) on FM
Track Width	32" (.81m)
Overall Width	109 1/2" (2.78m)
Width Between Platforms	44" (1.12m)
Lifting Speed	60 Seconds
Power Requirements	20 H.P. 220/440/575 volt 3 Phase motor
Horizontal Movement	36 1/8" (.92m) @ full stroke

OPTIONAL EQUIPMENT

- Rolling Jack/Jacking Platforms
- Track Lighting
- Air/Hydraulic Tire Dolly
- Keyed Control Lock-Out
- Stainless Steel Bases
- Marine Paint (Rustoleum standard)
- Drive Thru Ramps
- Track Tape Switch-Shut Off
- Air Inflatable Movable Approach Ramps

SM = Surface Mount Model
FM = Flush Mount Model

THESE LIFTS CONFORM TO ANSI/ALI STANDARDS



Mohawk builds the best products with the finest materials, to the highest standards. Just compare our lifts. Our staff will assist you with a fleet evaluation, design assistance and answer any technical questions you have. We invite your calls.

Mohawk lifts are manufactured in compliance with the following standards: ALI, ANSI, ASME, AISI, ASTM, ASA, NEC, AWG, NEMA.

MEETS CURRENT NATIONAL ANSI CODE FOR LIFTS.



Mohawk Resources, LTD.

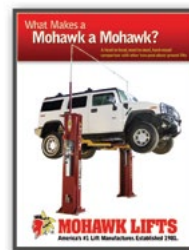
P.O. Box 110
65 Vrooman Ave
Amsterdam, NY 12010
(800) 833-2006
(518) 842-1431
FAX: (518) 842-1289

www.mohawklifts.com

AVAILABLE UNDER DISCOUNTED GOVERNMENT CONTRACT IN ALL 50 STATES



GSA contract #GS-07F-207AA



For more detailed product information read this book at www.mohawklifts.com.



DISTRIBUTED BY: