

# MODEL TP-20

## 20,000 LB. HEAVY DUTY TWO POST LIFT



TO MEET THE ONE AND ONLY NATIONAL SAFETY STANDARD FOR VEHICLE LIFTS



### THE LIFT YOU CAN'T WEAR OUT



# MOHAWK

*Americas Best Lift Investment...*

Still proudly designed, welded and manufactured in the U.S.A.





# MOHAWK TP-20

## SOLID, SAFE, PROVEN & CERTIFIED HEAVY DUTY LIFTS FOR... HEAVY DUTY SERVICE



▲ Mohawk large and stable footprint measures 48" wide x 30" and is made of 1" thick plate. Mohawk's large base gives stability to the lift, while distributing the load to the shop floor. The TP-20 only requires 6 1/2" of concrete.



**Available with Safety Weight Gauge**  
Weighs the vehicle showing the lift has been lowered onto the locks and increases service revenue.



### MOHAWK TP-20 DESIGN

- Lifts vehicles up to 20,000 lbs.
- Surface mounted design bolts to the shop floor.
- No in-ground oil tanks, no digging for installations, making installations fast and service easy.
- Low profile, 3 stage arms for access under compact cars through medium duty trucks.
- ALL safety certified to meet national and local ANSI codes (ANSI/ALI ALCTV) for the safety of your shop's employees.
- Light thru medium duty vehicles, Mohawk's TP-20 lifts them all.

### FEATURES

- Constructed of heavy 7" x 1" fork lift mast channels (NOT formed sheet metal).
- Each of the carriages ride on double sealed, self lubricating ball bearing rollers (NOT plastic slide blocks) for a lifetime of maintenance free service.
- Direct drive lifting rods attached to each cylinder and carriage (no cables, chains, or pulleys) means no parts to wear or maintain.
- WIDE 48" base for stability.

### BENEFITS

- 3 section swing arms make more than a 2 stage arm and increase clearance for all wheelbases.
- 5", 7 1/2" and 10" stacking adaptors included to reach truck frames, fuel tanks or tool boxes.
- Built Mohawk TOUGH—the same structural columns used in Mohawk's TP-26 and TP-28.
- Built to last **forever**.

**WHAT OTHER LIFT OFFERS A 25 YEAR STRUCTURAL WARRANTY**



▲ Mohawk's all position mechanical and hydraulic safety systems lock the vehicles at ALL working heights. Mohawk safeties consist of 1½" plate steel locks engaging into the slotted carriage lock racks.



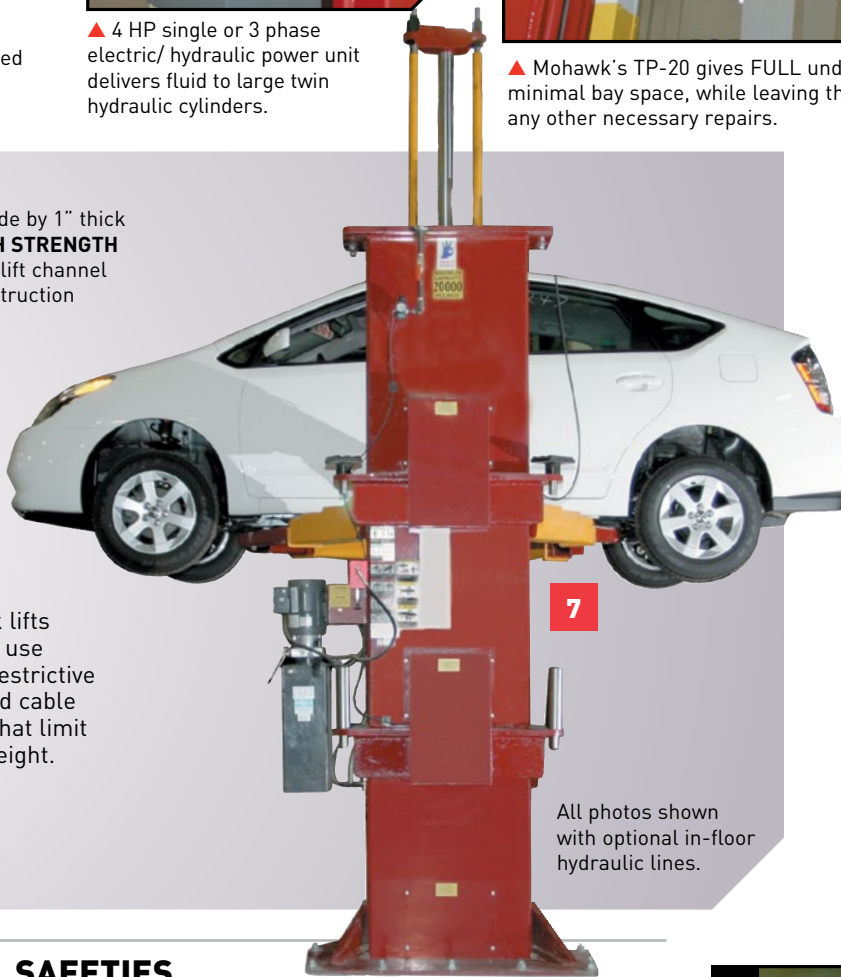
▲ 4 HP single or 3 phase electric/ hydraulic power unit delivers fluid to large twin hydraulic cylinders.



▲ Mohawk's TP-20 gives FULL under vehicle access for all repairs, takes up minimal bay space, while leaving the wheels hanging free for tire, brake or any other necessary repairs.



7"wide by 1" thick **HIGH STRENGTH** fork lift channel construction



All photos shown with optional in-floor hydraulic lines.

▼ Mohawk's direct lifting system eliminates cables, chains and any wear items. Direct drive lifting is achieved from the cylinder to the 1½" steel drive rods, which bolt to the carriage.



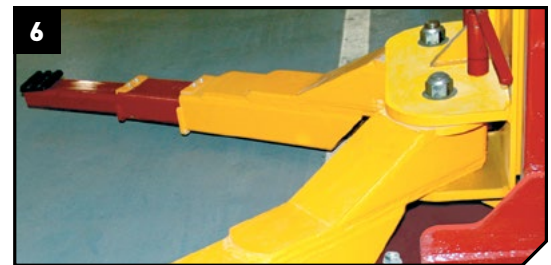
▲ Mohawk TP-20 columns are constructed of 1" thick, high strength fork lift mast channels, with 24 double sealed, self lubricating ball bearing rollers to smoothly raise the lift, using large 4½" cylinders for a lifetime of trouble free service.



Mohawk lifts **DO NOT** use height restrictive overhead cable covers that limit lifting height.

**SAFETIES**

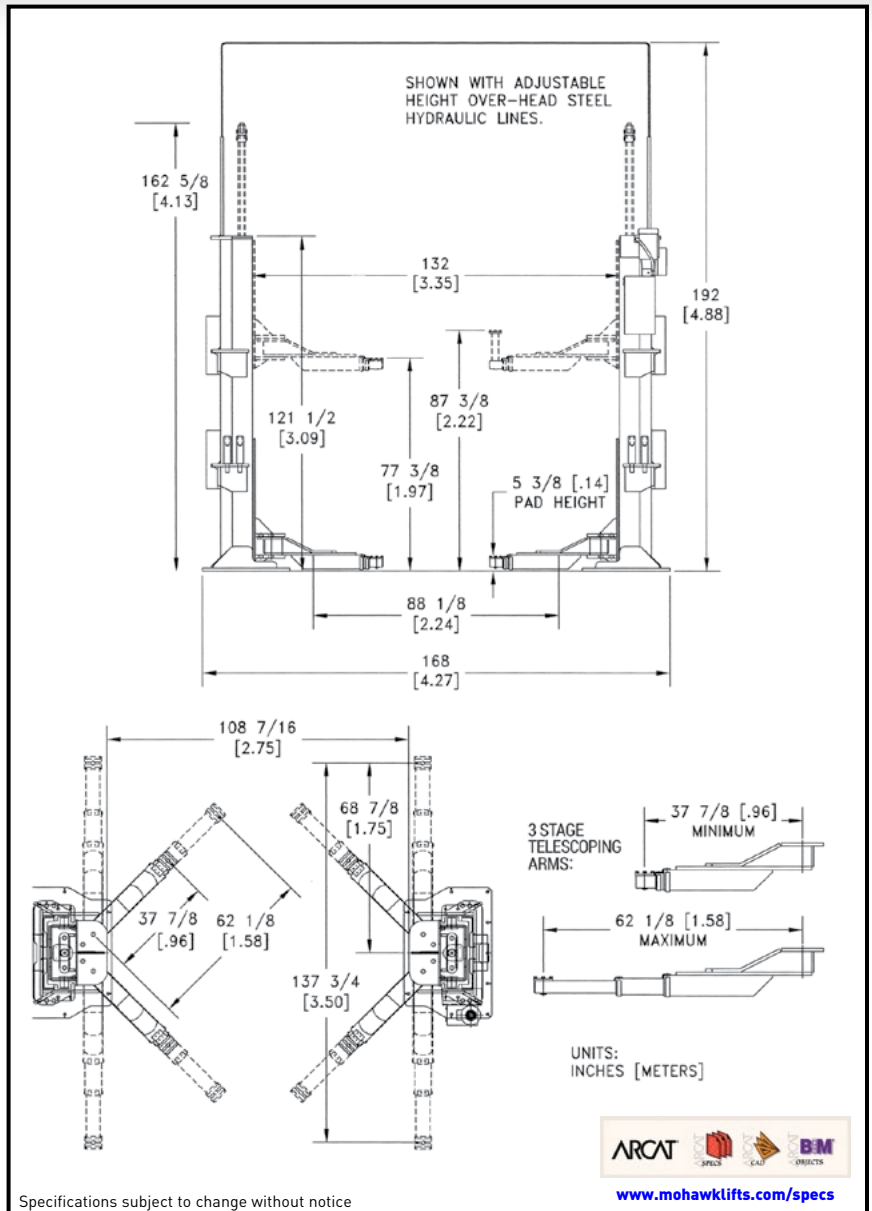
- Single point mechanical lock release, located at the main post, unlocks both safeties.
- Release the mechanical locks with Mohawk's air cylinders. Upon release, safeties immediately re-engage.
- 20,000 lb. capacity to safely raise fully loaded work and utility trucks.
- 14 position 1½" thick steel plate safety locks in each post start engaging at 5" and continue through the full lifting height.
- Optional safety gauge verifies lift has been lowered onto locks.



▲ Mohawk double telescoping 3 stage swing arms are only 5 ¾" high to fit under the passenger cars in your fleet. Double telescoping arms allows lifting of vehicles from large utility trucks, to short wheelbase sub-compact cars.

# MODEL TP-20 SPECIFICATIONS

<b>MODEL:</b>	<b>TP-20</b>
<b>Capacity:</b>	20,000 lbs. (9,000 Kg)
<b>Lifting Speed:</b>	90 seconds
<b>Motor Rating:</b>	4 HP/208-230 VAC, single phase (3 phase optional)
<b>Synchronization:</b>	Hydraulic fluid displacement using no chains, cables, or overhead obstructions
<b>Arm Pad Height:</b>	5 3/8" (13.6cm)
<b>Lifting Height:</b>	6' (1.83 m) under arm
<b>Arm Pad Height @ Full Rise:</b>	6' 5 3/8" (1.97m)
<b>Max. Pad Height with Adaptors:</b>	7' 3 3/8" (2.22m)
<b>Overall Width:</b>	14' (4.27m) <b>(adjustable)</b>
<b>Width Between Posts:</b>	11' (3.35m) <b>(adjustable)</b>
<b>Width Between Carriage:</b>	9' 7/16" (2.75m) <b>(adjustable)</b>
<b>Column Height:</b>	10' 1 1/2" (3.09m)
<b>Max. Cylinder Height:</b>	13' 6 5/8" (4.13m)
<b>Overhead Hydraulic Line:</b>	16' Standard. Optional to any height or routed in floor.
<b>Shipping Weight:</b>	7000 lbs. (3175 Kg)
<b>Anchoring System:</b>	4000 psi concrete, 6 1/2" minimum thickness
<b>Mechanical Safety Locks:</b>	<b>Automatic</b> every 6"
<b>Hydraulic Safety Systems:</b>	<b>Multi-position</b> , interlocked redundant safety systems
<b>Swing Arm Restraint:</b>	<b>Automatic</b> upon ascent
<b>Cylinders:</b>	2 (1 per column)
<b>5", 7 1/2", 10" Frame Adaptors (stackable):</b>	4 each included - standard
<b>Carriage Bearings:</b>	(16) 5" (12.7cm) diameter (8 per carriage) double-sealed, self lubricating ball bearing rollers
<b>Side Load Bearings:</b>	(8) 4" (10.2cm) diameter (4 per carriage) double-sealed, self lubricating ball bearing rollers
<b>Floor Access Between Posts:</b>	Clear and unobstructed
<b>Warranty:</b>	<b>25 year structural 10 year mechanical + limited life-time cylinder seal warranty</b>



Mohawk builds the best products with the finest materials, to the highest standards. Just compare our lifts. Our staff will assist you with a fleet evaluation, design assistance and answer any technical questions you have. We invite your calls.

Mohawk lifts are manufactured in compliance with the following standards: ALI, ANSI, ASME, AISI, ASTM, ASA, NEC, AWG, NEMA.

**MEETS CURRENT NATIONAL ANSI CODE FOR LIFTS.**

**For more detailed product information read this book at [www.mohawklifts.com/wmamam](http://www.mohawklifts.com/wmamam)**



AVAILABLE UNDER DISCOUNTED GOVERNMENT CONTRACT IN ALL 50 STATES

**Mohawk Resources, LTD.**

P.O. Box 110  
65 Vrooman Ave  
Amsterdam, NY 12010  
(800) 833-2006  
(518) 842-1431  
FAX: (518) 842-1289



GSA contract #GS-07F-207AA



**DISTRIBUTED BY:**

**[www.mohawklifts.com](http://www.mohawklifts.com)**  
NJ State Approved Co-op #65MCESSCPs

**Bid Term: 11/16/18 - 11/15/20**