

# MODELS TP-26/30

## 26,000 & 30,000 LB. CAPACITY 2 POST LIFT

### THE LIFT YOU CAN'T WEAR OUT



**25**  
YEAR  
WARRANTY



TO MEET THE ONE AND ONLY  
NATIONAL SAFETY STANDARD  
FOR VEHICLE LIFTS



# MOHAWK

*Americas Best Lift Investment...*

Still proudly designed, welded  
and manufactured in the U.S.A.



# MOHAWK TP-26/30

## SOLID, SAFE, PROVEN & CERTIFIED.



### HEAVY DUTY LIFTS FOR... HEAVY DUTY SERVICE

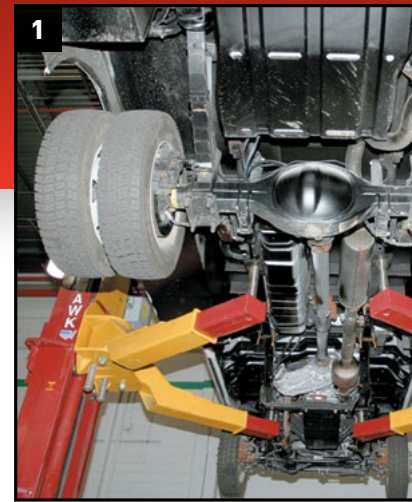


#### Safety Weight Gauge

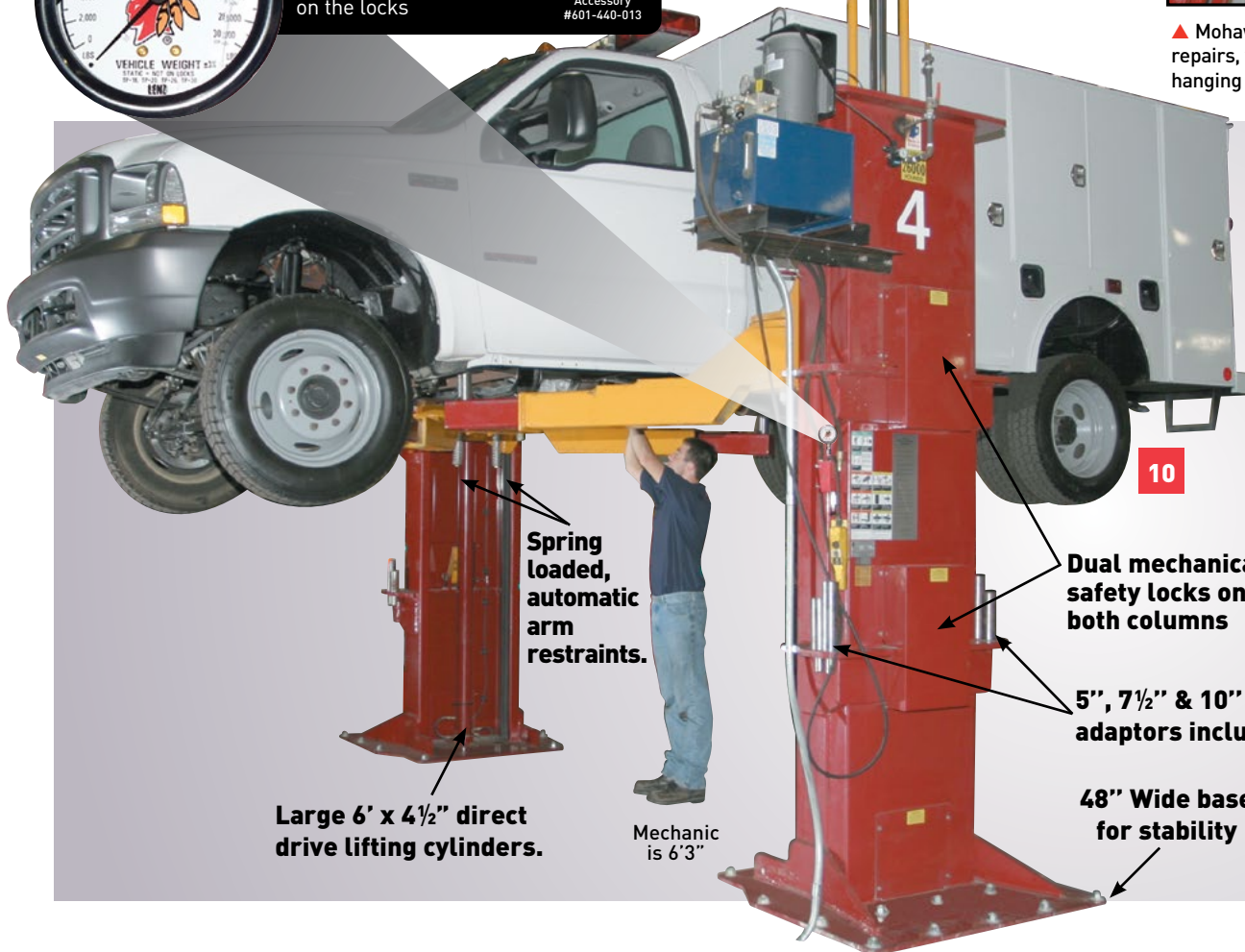
Shows vehicle weight, aids vehicle diagnosis, visually shows when lift is lowered on the locks



Shown: TP-26  
Accessory  
#601-440-013



▲ Mohawk's TP-26, TP-30 gives FULL under-vehicle access for repairs, yet takes up minimal bay space, with wheels hanging free for tire, brake or any other need.



▲ 7" wide by 1" thick channels provide HIGH STRENGTH for lift channel construction.

### MOHAWK TP-26/30 DESIGN

- Lifts vehicles up to 30,000 lbs.
- Surface mounted design bolts to the shop floor.
- Twin post design allows complete under vehicle access for all repairs yet leaves the wheels hanging free for tire and brake service.
- Takes up less shop space than ramp lifts.
- No in-ground oil tanks, no digging for installations, making installations fast and service easy.
- Medium thru Heavy Duty vehicles, Mohawk's TP-26 or TP-30 lifts them all.
- Hammertone paint finish for lasting durability.

### FEATURES

- Constructed of heavy 7" x 1" fork lift mast channels (NOT formed sheet metal) for a lifetime of trouble free service.
- Each carriage rides on double sealed, self lubricating ball bearing rollers (NOT plastic slide blocks) for a lifetime of maintenance free service.
- Direct drive lifting rods attached to each cylinder and carriage meaning (no cables, chains, or pulleys); no parts to wear or maintain.
- WIDE 48" base for stability.



er vehicle access for all  
hile leaving the wheels  
ecessary repairs.



▲ Mohawk's all position mechanical and hydraulic safety systems lock the vehicles at ALL working heights. Mohawk safeties consist of 1 1/2" plate steel locks engaging into the slotted carriage lock racks every 6".



▲ 5 HP 3 phase power unit delivers fluid equally to twin hydraulic cylinders for quick and smooth lifting.



Wide Base Model Shown

▲ Mohawk's large and stable footprint measures 48" wide x 30" (or 42") deep and is made of 1" thick plate. Mohawk's baseplate gives stability to the lift, while distributing the load to the shop floor. The TP-26/TP-30 requires 12" of concrete or optional footprint (shown) for shops with only 8" floors.

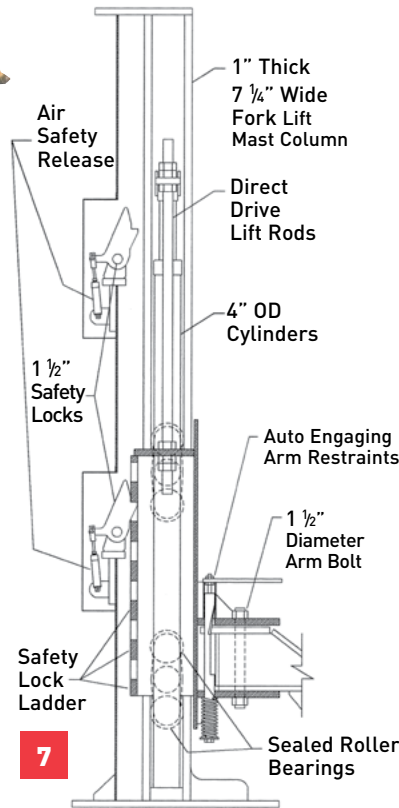


9

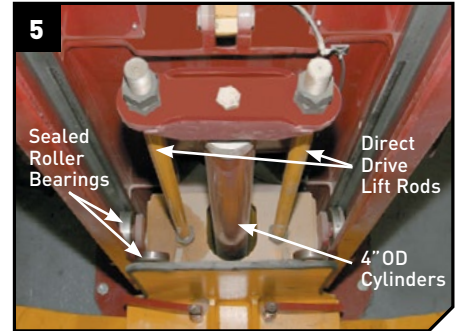
k  
ction



Mohawk lifts DO NOT use height restrictive overhead cable covers that limit lifting height.



7



▲ Mohawk columns are constructed of 1" thick, HIGH STRENGTH fork lift mast channels, using 24 double sealed, self lubricating ball bearing rollers to smoothly raise the lift, using large 4 1/2" cylinders for a lifetime of trouble free service.



▲ Mohawk stackable truck adaptors are included for access around gas tanks and tool boxes to reach the vehicle frame.

## BENEFITS

- Arm length designed to accommodate all of your specific fleet wheel base requirements.
- 5", 7 1/2" and 10" stacking truck adaptors included to reach truck frames and get around fuel tanks or tool boxes.
- Built to last forever.

## SAFETIES

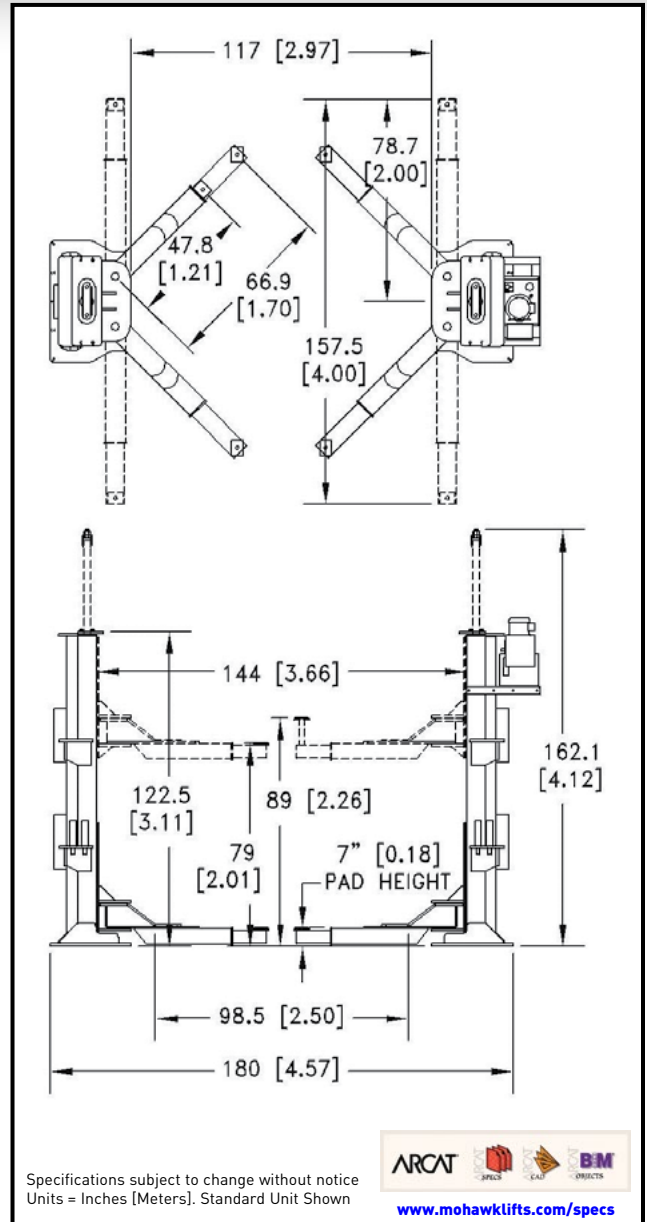
- Hand-held pendant control to raise or lower the lift by releasing both mechanical locks & allowing hydraulic fluid to return to the reservoir.

- Release the mechanical locks with Mohawk's air cylinders. Upon release, safeties immediately re-engage.
- 26,000 or 30,000 lb. capacity to safely raise loaded work and utility trucks.
- 12 position 1 1/2" steel plate safety locks in each post start engaging at 5" and continue every 6" through the full lifting height of 6'7".
- Patented Hydraulic locking system, backed by velocity fuses and Pressure Compensated Flow Control valving.



# MODELS TP-26 & TP-30 SPECIFICATIONS

<b>Capacity</b> .....	<b>TP-26:</b> 26,000 Lbs. (11793.41 Kg) <b>TP-30:</b> 30,000 Lbs. (13607.78 Kg)
<b>Lifting speed</b> .....	135 seconds
<b>Motor rating</b> .....	<b>TP-26/30:</b> 5 HP 208-230v or 440-480v 3 Phase
<b>Arm Pad height</b> .....	<b>TP-26/30:</b> 7" (20.32 cm) minimum
<b>Lifting height (Stroke)</b> .....	6' (1.83 m)
<b>Arm height @ full rise</b> .....	6' 7" (2.01 m)
<b>Max. Pad height with Adaptors</b> .....	7' 5" (2.26 m)
<b>Overall width</b> .....	15' (4.57 m) (wider base model 17' or 5.18 m)
<b>Width between Posts</b> .....	12' (3.66 m)
<b>Width between Carriage</b> .....	9' 9" (2.97 m)
<b>Column height</b> .....	11' (3.35 m)
<b>Max. Cylinder height</b> .....	13' 6 1/8" (4.12 m)
<b>Overhead Hydraulic Line</b> .....	Adjustable to any height or routed in floor
<b>Shipping weight</b> .....	<b>TP-26:</b> 8880 Lbs. (4027.90 Kg) <b>TP-30:</b> 9300 Lbs. (4218.41 Kg)
<b>Concrete floor requirements</b> .....	<b>TP-26/30 WB:</b> 8" of 4000 psi concrete <b>TP-26/30:</b> 12" of 4000 psi concrete
<b>Anchoring system</b> .....	12" floor: (18) 1" x 10" Wej-it bolts 8" floor: (28) 1" x 8" Wej-it bolts
<b>Lift synchronization</b> .....	Hydraulic Fluid Displacement using no chains, cables nor overhead obstructions
<b>Mechanical Safety Locks (single point air lock release)</b> .....	Multi-position, interlocked redundant safety systems.
<b>Hydraulic Safety System</b> .....	Automatic: all position
<b>Swing Arm Restraints</b> .....	Automatic engaging upon ascent
<b>Cylinders</b> .....	2 (1 per column)
<b>5", 7 1/2", 10" Frame Adaptors (Stackable)</b> .....	4 each, included as standard equipment
<b>Carriage Bearings</b> .....	(16) 5" (12.7 cm) diameter (8 per carriage) Double sealed self lubricating
<b>Thrust Bearings</b> .....	(8) 5" (12.7 cm) diameter (4 per Carriage) Double sealed self lubricating
<b>Floor access between Posts</b> .....	Clear and unobstructed
<b>Warranty</b> .....	<b>25 year structural, 10 year mechanical + limited lifetime cylinder seal warranty</b>



Mohawk builds the best products with the finest materials, to the highest standards. Just compare our lifts. Our staff will assist you with a fleet evaluation, design assistance and answer any technical questions you have. We invite your calls.

Mohawk lifts are manufactured in compliance with the following standards: ALI, ANSI, ASME, AISI, ASTM, ASA, NEC, AWG, NEMA.

MEETS CURRENT NATIONAL ANSI CODE FOR LIFTS.



Mohawk Resources, LTD.  
P.O. Box 110  
65 Vrooman Ave  
Amsterdam, NY 12010  
(800) 833-2006  
(518) 842-1431  
FAX: (518) 842-1289  
[www.mohawklifts.com](http://www.mohawklifts.com)



AVAILABLE UNDER DISCOUNTED GOVERNMENT CONTRACT IN ALL 50 STATES



DISTRIBUTED BY:



[www.facebook.com/mohawklifts](http://www.facebook.com/mohawklifts)

For more detailed product information read this book at [www.mohawklifts.com](http://www.mohawklifts.com).

