

# Government Automotive Service Equipment

September 2018



## Government to Government Cooperative Purchasing Services



[www.govlifts.com/hunter](http://www.govlifts.com/hunter)  
**1-800-833-2006**



NJPA is now Sourcewell



**HUNTER**



# STATE CONTRACT AWARD OVERVIEW\* (www.govlifts.com/hunter)

## ALABAMA

★ 061015-MRL  
07/21/15 - 7/21/2019  
+ 1 year extension  
Sourcewell/NJPA Award Info

## ALASKA

★ N-2017-VEH-0001  
03/29/2017 - 02/09/2019  
+ 3 year extension

## ARIZONA

★ 05316  
07/2018 - 02/09/2019  
+ 3 year extension

## ARKANSAS

★ 061015-MRL  
07/21/15 - 07/21/2019  
+ 1 year extension  
Sourcewell/NJPA Award Info

## CALIFORNIA

★ CMAS Contract  
#4-13-56-0055A  
12/12/2013 - 09/30/2018  
+ 5 year extension

## CALIFORNIA

★ 05316  
06/2018 - 2/9/19  
+ 3 year extension

## COLORADO

★ 05316  
06/2018 - 2/9/19  
+ 3 year extension

## CONNECTICUT

★ 17PSX0074  
6/6/2017 - 2/9/2019  
+ 3 year extension

## DELAWARE

★ GSS17405-VEHLIFT  
02/28/2017 - 02/09/2019  
+ 3 year extension

## FLORIDA

★ 061015-MRL  
07/21/15 - 07/21/2019  
+ 1 year extension  
Sourcewell/NJPA Award Info

## GEORGIA (MOHAWK ONLY)

★ SWC 90817-001  
02/23/2011 - 02/24/2019

## GEORGIA (MOHAWK & HUNTER)

★ 061015-MRL  
07/21/15 - 07/21/2019  
+ 1 year extension  
Sourcewell/NJPA Award Info

## HAWAII

★ 061015-MRL  
07/21/15 - 07/21/2019  
+ 1 year extension  
Sourcewell/NJPA Award Info

## IDAHO

★ 061015-MRL  
07/21/15 - 07/21/2019  
+ 1 year extension  
Sourcewell/NJPA Award Info

## ILLINOIS

★ 061015-MRL  
07/21/15 - 07/21/2019  
+ 1 year extension  
Sourcewell/NJPA Award Info

## INDIANA

★ 061015-MRL  
07/21/15 - 07/21/2019  
+ 1 year extension  
Sourcewell/NJPA Award Info

## IOWA

★ MA005 18039  
08/01/2017 - 02/09/2019  
+ 3 year extension

## KANSAS

★ 061015-MRL  
07/21/15 - 07/21/2019  
+ 1 year extension  
Sourcewell/NJPA Award Info

## KENTUCKY

★ 061015-MRL  
07/21/15 - 07/21/2019  
+ 1 year extension  
Sourcewell/NJPA Award Info

## LOUISIANA

★ 4400001445 T#92456  
9/8/15 - 9/7/18

## MAINE

★ MA-7031000000000000103  
03/10/2017 - 02/09/2019  
+ 3 year extension

## MARYLAND

★ BPO 001B8400064  
12/27/2017 - 07/21/2019  
+ 1 year extension

## MASSACHUSETTS

★ VEH105  
7/28/2017 - 07/21/2019  
+ 1 year extension

## MICHIGAN

★ 061015-MRL  
07/21/15 - 07/21/2019  
+ 1 year extension  
Sourcewell/NJPA Award Info

## MINNESOTA

★ 126294  
05/22/2018 - 02/09/2019  
+ 3 year extension

## MISSISSIPPI

★ 8200031877  
04/05/2017 - 03/31/2019  
+ 3 year extension

## MISSOURI

★ CC180160002  
07/18/2017 - 02/10/2019  
+ 3 year extension

## MONTANA

★ 5316  
3/20/2017 - 2/9/2019  
+ 3 year extension

## NEBRASKA

★ 14791 OC  
05/22/2017 - 07/21/2019  
+ 3 year extension

## NEVADA

★ 8544  
02/10/2017 - 02/09/2019  
+ 3 year extension

## NEW HAMPSHIRE

★ 8002279  
02/10/2018 - 02/10/2019  
+ 3 year extension

## NEW JERSEY

★ 061015-MRL  
7/21/15 - 7/21/19  
+ 1 year extension  
Sourcewell/NJPA Award Info

## NEW MEXICO

★ 80-000-18-00047AC  
04/10/2018 - 02/09/2019  
+ 3 year extension

## NEW YORK

★ PC67221  
10/21/2015 - 7/20/2019

## NORTH CAROLINA

★ 070D  
04/21/2017 - 02/10/2019  
+ 3 year extension

## NORTH DAKOTA

★ 395  
02/10/2017 - 02/09/2019  
+ 3 year extension

## OHIO

★ 061015-MRL  
08/2018 - 07/21/2019  
+ 1 year extension

## OKLAHOMA

★ SW 798 (NASPO)  
05/25/2017 - 02/09/2019  
+ 3 year extension

## OREGON

★ MA #05316 PA #7671  
10/27/2017 - 2/10/2019  
+ 3 year extension

## PENNSYLVANIA

★ 4400017609  
08/18/2017 - 02/10/2019  
+ 3 year extension

## RHODE ISLAND

★ 3567737  
05/15/2018 - 02/09/2022  
+ 3 year extension

## SOUTH CAROLINA

★ 4400016132  
5/19/2017 - 2/9/2019  
+ 3 year extension

## SOUTH DAKOTA

★ 17051  
02/10/2017 - 02/09/2019  
+ 3 year extension

## TENNESSEE

★ 061015-MRL  
07/21/15 - 07/21/2019  
+ 1 year extension  
Sourcewell/NJPA Award Info

## TEXAS

★ TXMAS-13-56070  
08/2018 - 07/21/2019  
+ 1 year extension

\* This is a representation of current state contracts at the time of publication and is subject to change at any time. Visit [www.govlifts.com](http://www.govlifts.com) for details or contact your representative for information on each individual state contract.

Vendor of Record: Mohawk Resources LTD



**UTAH**

★ MA2002  
 2/10/2017 - 02/10/2019  
 + 3 year extension

**VERMONT**

★ 061015-MRL  
 07/21/15 - 07/21/2019  
 + 1 year extension  
 Sourcewell/NJPA Award Info

**VIRGINIA**

★ E194-77248  
 05/17/2017 - 02/09/2019  
 + 3 year extension

**WASHINGTON**

★ 05316  
 2/10/2017 - 02/09/2019  
 + 3 year extension

**WEST VIRGINIA**

★ 061015-MRL  
 07/21/15 - 07/21/2019  
 + 1 year extension  
 Sourcewell/NJPA Award Info

**WISCONSIN**

★ 505ENT-017-VEHICLELFT-01  
 04/13/2017 - 02/09/2019  
 + 3 year extension

**WYOMING**

★ 061015-MRL  
 07/21/15 - 07/21/2019  
 + 1 year extension  
 Sourcewell/NJPA Award Info

**GSA**

★ GS-07F-207AA  
 7/1/2013 - 6/30/2023

**HGACBUY**

★ FL03-17  
 3/1/2017 - 2/28/2019

- ★ = CONTRACT NUMBER
- 2/10/2017 - 02/10/2019 = CONTRACT PERIOD
- + = CONTRACT EXTENSION
- Sourcewell/NJPA Award Info = CONTRACT THROUGH NATIONAL GOVERNMENT COOPERATIVE
- Red square = STATE CONTRACT
- NASPO ValuePoint logo = STATE CONTRACT
- Sourcewell logo = ALTERNATE CONTRACT FOR GOVERNMENT AGENCIES

**GET THE EQUIPMENT YOU WANT**  
*State Contracts: Competitively bid and competitively awarded.*



**WHY USE AN ESTABLISHED STATE CONTRACT?**

*Save time:*

State Procurement estimates the standard RFP/Bid Process consumes 259 procurement man-hours; that's equal to over \$11,000 in salary!

*Save money:*

Don't pay more for quality — leverage the volume purchasing power of government agencies across the U.S.

*City, county, and state agencies*

Can use the State Contract to purchase Mohawk lifts & Hunter wheel service equipment.

*Full Compliance*

with Public Procurement and Records Regulations.

*Ease of Use*

the work (and risk) of award and administration is managed on your behalf.

*All Products include **PREPAID FREIGHT!***

*For full details on state contracts,  
 go to [www.govlifts.com/hunter](http://www.govlifts.com/hunter)*



# Hunter's state-of-the-art automotive technology



## WinAlign® Alignment System

Receive accurate results in seconds with Hunter's highly-efficient alignment system.



## RX Scissor Lifts

Maximize productivity by handling large capacities on space-saving, low-to-ground lifts.



## Road Force Elite® GSP9700

Solve vibration problems with Hunter's innovative complete wheel diagnostics.



## TCX50 Tire Changer Series

Change a large volume of wheel assemblies with Hunter's easy-to-use, powerful tire changers.



## AutoComp Elite™ On-Car Brake Lathe

Service each rotor precisely in less than 9 minutes.



## Inspection Systems

Test alignment angles, brakes, emissions, battery health, tire pressure and tread depth in just 2 minutes!



## WinAlign® Heavy-Duty Alignment System

Save time and effort with Hunter's alignment system designed for multi-axle vehicles.



## ForceMatch® HD Balancer

End wheel vibrations for a wide range of vehicles from passenger cars to Class 8 trucks.



## TCX625HD Tire Changer

Service over-the-road truck tires safely and easily. Easy-to-use features make it ideal for match-mounting.

**HUNTER**  
Engineering Company



## ALIGNMENT SYSTEMS

### WINALIGN® ALIGNMENT SYSTEM

WinAlign® fully integrates the functions of the console, sensors and lift into one highly efficient alignment system.

WinAlign® systems build profits and find service opportunities with:

- ✓ The most extensive vehicle information database in the industry
- ✓ Vehicle-specific adjustment tools and procedures
- ✓ Graphically driven step-by-step instructions
- ✓ Automated tasks that save steps and speed service
- ✓ Many configurations to fit challenging shop floor layouts



### HAWKEYE ELITE®

Hunter's QuickGrip® adaptors and three-dimensional targets accelerate service with setup times in seconds, not minutes.

- ✓ Lightweight
- ✓ No metal-to-metal contact
- ✓ No knob twisting



**ProAlign® alignment system** also available.

## LIFT RACKS

### RX SCISSOR LIFT

Hunter's RX Scissor Lift is "a must" for service centers with high volume and limited workspace.

- ✓ 10,000-, 12,000- and 16,000-lb. capacities
- ✓ Clear access to front and rear
- ✓ Optional PowerSlide® auto-lock system controls turnplates and slipplates
- ✓ Optional Inflation Station sets tire pressure without cumbersome hoses and gauges



### FOUR-POST LIFTS

Expand service capabilities with Hunter's high-capacity four-post lifts.

- ✓ Massive 18,000-lb. capacity
- ✓ Industry leading 26" wide runways
- ✓ Increased maximum wheelbases accommodate large vehicles
- ✓ PowerSlide® and Inflation Station options available



## INSPECTION LANE

### QUICK CHECK®

Comprehensive vehicle inspection in under two minutes for every car in the service lane.

Quick Check® systems can test:

- ✓ Alignment measurement
- ✓ Tire tread depth
- ✓ Tire pressure
- ✓ Brake performance
- ✓ Diagnostic codes
- ✓ Battery health



### QUICK TREAD®

Drive over tread depth system automatically measures the tread depth of each tire in seconds.

- ✓ Eliminate trips around vehicle
- ✓ Capture accurate tread info on all vehicle traffic
- ✓ No technician required
- ✓ Measure a two-inch tire segment, not a single point
- ✓ Generate three-dimensional model of customer tires
- ✓ Easy-to-understand printouts help sell tires

## WHEEL BALANCERS

### ROAD FORCE® ELITE

Hunter's premier wheel diagnostic machine solves vibration and drivability problems with a series of patented tools.

- ✓ Hunter's patented vision system automatically scans the wheel
- ✓ Solve vibrations with a Road Force® test faster than a traditional balance
- ✓ Intuitive touchscreen interface speeds the learning curve
- ✓ StraightTrak® measurement eliminates tire pulls
- ✓ SmartWeight® technology saves time and money
- ✓ eCal™ true automatic calibration guarantees accuracy



### SMARTWEIGHT® TOUCH

High-performance features in a mid-range machine provide fast, efficient balancing service.

- ✓ Includes SmartWeight® technology
- ✓ Intuitive touchscreen interface
- ✓ eCal™ automatic calibration





## TIRE CHANGERS

### REVOLUTION™

Fully automatic and easy-to-use for today's diverse assemblies.

- ✓ Adds safety for both operator and assembly
- ✓ Handles virtually all tires in the same time
- ✓ Eliminates experience gap
- ✓ Simplifies training



### AUTO34S

Service the most difficult performance tires and custom wheels with ease.

- ✓ Leverless technology eliminates prying and bead stress
- ✓ Minimizes risk of wheel damage and injury to operator
- ✓ Easy operation for all wheel sizes, designs and fitments
- ✓ Services 10- to 34-inch wheels



### TCX57

The leverless tool head and patented bead press system easily service everything from simple steel wheels to difficult custom designs.

- ✓ Leverless tool head easily lifts bead
- ✓ Swing arm saves time and space
- ✓ Wheel range of 6 to 30 inches



### TC39/37

Easy-to-use center clamp tire changers with bead press arm to assist in mounting of difficult assemblies.

- ✓ Damage-free service with optional leverless operation
- ✓ Powerful motor and drive with variable speed rotation



### TCX50 SERIES

Power and speed make these tabletop tire changers suitable for volume service of all tire and wheel combinations.

**TCX53:** Multi-press arm services 10- to 26-inch wheels

**TCX51:** Single-press arm services 10- to 26-inch wheels

**TCX50:** Services 10- to 26-inch wheels



## BRAKE LATHES

### AUTOCOMP ELITE™

Bringing machine tool precision to rotor refinishing, Hunter Hub-Mounted Lathes increase productivity and reduce comebacks.

- ✓ Eliminates setup errors with on-vehicle machining



### BL505 COMBINATION BENCH LATHE

The unique BL505 design allows the operator to switch back and forth from drum to rotor service with unmatched ease and speed.



## HEAVY-DUTY

### WinAlign® heavy-duty alignment system

Hunter's HD system delivers unique alignment features specifically for heavy-duty truck, trailer and bus applications.

- ✓ More than 60 axle configurations supported
- ✓ No toe lines, cables or "strings"
- ✓ Specification database supplied by major manufacturers



### TCX625HD

Unique mount/demount roller mechanism to provide high performance servicing of heavy-duty, over-the-road truck assemblies.

- ✓ Tulip-style clamp eases service and prevents wheel damage
- ✓ Bead-breaking, drop-down inner roller saves time
- ✓ Hydraulic-powered carriage eases wheel clamp positioning



### FORCEMATCH® HD

Vibration management and wheel uniformity measurement for a wide range of vehicles from passenger cars to Class 8 trucks.

- ✓ Optimizes rolling uniformity of HD assemblies
- ✓ Allows shops to mount wheels by diameter and eccentricity
- ✓ Minimizes tire wear and maximizes ride quality



# HUNTER

# HUNTER

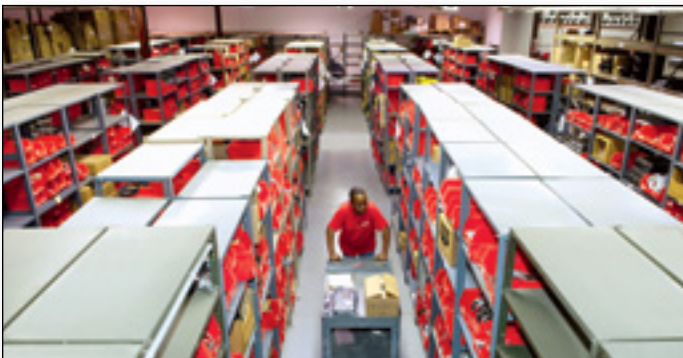
# SALES, SERVICE & SUPPORT



Hunter Sales Representatives are very knowledgeable in the industry, to meet your shop needs.



Hunter Service Representatives are always nearby with a van fully-stocked with service parts to keep you up and running.



Hunter's Service Center ships 99.9% of part orders the same day.



Hunter Training Centers offer specialized education for your technicians.

*Some products are shown with options or accessories which must be purchased separately. For detailed information see the specific product brochure or contact your local Hunter Representative. Because of continuing technological advancements, specifications, models and options are subject to change without notice.*

**HUNTER**  
Engineering Company



**MOHAWK LIFTS**

[www.govlifts.com/hunter](http://www.govlifts.com/hunter)

P.O. Box 110  
Amsterdam, NY 12010  
toll free: 800-833-2006  
phone: 518-842-1431  
email: [hunter@mohawklifts.com](mailto:hunter@mohawklifts.com)



**1-800-833-2006**

[www.govlifts.com/hunter](http://www.govlifts.com/hunter)  
[hunter@mohawklifts.com](mailto:hunter@mohawklifts.com)





# MOHAWK LIFTS



  
Model System  
IA-10

**TWO POST**



  
Model  
TP-20



  
Model TR-75

**FOUR POST**



  
Model MP-18-007

**MOBILE COLUMN**



  
Model 50-26-S

**PARALLELOGRAM**



  
Model IA-10  
Accessory:  
009-012-001

**SPECIALTY LIFTS**



*Proudly designed, welded and  
manufactured in the U.S.A. since 1981*



# Buy Once. Buy Right. Buy a Mohawk.

**IF THERE IS A VEHICLE IN THE AIR . . .  
MAKE SURE THERE IS A MOHAWK LIFT UNDERNEATH IT.**

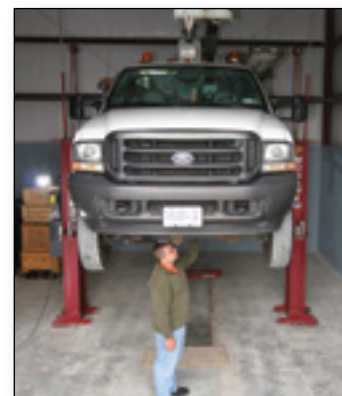


**Mohawk**, the undisputed leader in lift technology, offers environmentally safe above-ground lifts ranging from 6,000 to 240,000 lb. capacities.

Since 1980 Mohawk has manufactured the highest quality, safest auto and truck lifts available. Mohawk is the #1 lift supplier for all government, state, utility, and fleet lifting requirements. Mohawk's popularity is based on safety systems, longevity, design, construction, and the most inclusive warranty in the lift industry.



MOHAWK TWO POST LIFTS OFFER A 25 YEAR STRUCTURAL 10 YEAR MECHANICAL WARRANTY



Mohawk's Patented hydraulic equalization eliminate floor plates and overhead obstruction, giving you a clear floor work space for complete access under any vehicle.

## MOHAWK TWO POST LIFTS

Mohawk two post lifts are available in 11 different models and range in capacity from 7,000 to 30,000 lbs. Mohawk lifts feature the industry's heaviest construction for a lifetime of trouble-free service. Mohawk two post lifts offer a 25 year structural and 10 year mechanical warranty. Equipped with a variety of truck adaptors as standard equipment, Mohawk two post lifts are the lifts that will raise any vehicle that comes in the shop.

Mohawk two post lifts are hydraulically synchronized using overhead (or in-floor) hydraulic lines that can be set at any working height. Height adjustable overhead lines eliminate overhead cable covers & allow tall trucks to be fully raised. Mohawk two post lifts feature multiple position mechanical safety locks in both columns for safe, secure and stable lifting.

## MOHAWK FOUR POST LIFTS

Mohawk four post lifts are available in a variety of capacities starting at 19,000 lbs. for school buses and medium-duty trucks, heavier models for coaches or fire trucks, and the heaviest model of 120,000 lbs. for any type of off road equipment.

Mohawk four post lifts feature the heaviest designs made using fork lift channel and roller bearing construction. Heavy cross rails and I beam track construction assure a lifetime of service. Multiple safety systems consist of mechanical, electronic & hydraulic safeties operate at all lifting heights and assure the operator safety.

## MOHAWK MOBILE COLUMN LIFTS

2, 4, 6 and 8 column configurations in column capacities from 18,000W lbs., 24,000 lbs. or 30,000 lbs. per column means total lifting from 32,000 to 240,000 lb. Available in AC or DC battery operation.

## MOHAWK PARALLELOGRAMS

Available from 35,000 to 100,000 lb. capacities and track lengths from 26 to 48 feet in surface, recessed and flush mounted styles with optional rolling jacks or full lift galvanization for corrosive work areas.

## MOHAWK SPECIALTY LIFTS

Mohawk offers specialty lifts and accessories for a wide range of service equipment ranging from fork lifts to DOT snow plow trucks. No matter what you're lifting Mohawk has a better and safer way to lift it.

**For more details visit:  
[MohawkLifts.com/Dare2Compare](http://MohawkLifts.com/Dare2Compare)**



Mohawk two post lifts use height adjustable overhead stainless steel hydraulic lines NOT restrictive overhead cable and rubber hose covers that limit lifting height.



Mohawk fork lift channel column and sealed bearing (red/silver) shown lower with competitive lift bent sheet metal column and plastic slide block (blue/yellow).



# MOHAWK LIFTS



## LIGHT DUTY/LOW CEILING TWO POST

### A-7

- ✓ 7,000 lb. capacity
- ✓ Asymmetric design
- ✓ Clear floor work area
- ✓ Fits in narrow bays
- ✓ ALI safety certified
- ✓ 25 Year structural warranty
- ✓ 10 Year mechanical warranty



Model A-7

### SYSTEM IA-10/LC-12

- ✓ 10,000/12,000 lb. capacity
- ✓ Low 3 1/2" swing arms (System IA-10 only)
- ✓ ALI safety certified
- ✓ Adjustable height overhead stainless steel hydraulic lines (no rubber hoses)
- ✓ 25 year structural warranty
- ✓ 10 year mechanical warranty



Model System IA-10

## LIGHT DUTY FOUR POST

### FL-25

- ✓ 25,000 lb. capacity
- ✓ Adjustable 24" wide runways accommodate all forklifts
- ✓ Large 10"x 6" top rail is reversible to either side
- ✓ All position mechanical, hydraulic & electronic safety systems
- ✓ Runways made from three parallel 8" I-beams
- ✓ The heaviest construction of any competitive lift



## FOUR POST RUNWAY

### TR-19/25

- ✓ 19,000 Or 25,000 lb. capacities
- ✓ 16', 20', 25' or 30' track lengths
- ✓ All position mechanical, hydraulic & electronic safety systems
- ✓ Wheels free jacks available for tire & brake service
- ✓ Alignment compatible with Hunter equipment



## MEDIUM DUTY TWO POST

### LMF-12, TP-16 & TP-18

- ✓ 12,000, 16,000 & 18,000 lb. capacity
- ✓ ALI safety certified
- ✓ Infinite position mechanical safety locks
- ✓ Direct drive operation
- ✓ Adjustable overhead stainless steel hydraulic lines
- ✓ 25 year structural warranty
- ✓ 10 year mechanical warranty



Model TP-18

## MOBILE COLUMN

### MODEL MP-18/24/30

- ✓ 18,000, 24,000 & 30,000 lb. capacities per column
- ✓ Total capacities up to 240,000 lbs.
- ✓ Available in 2,4,6 or 8 column configurations
- ✓ Adjustable lifting forks
- ✓ Smooth electric/hydraulic operation
- ✓ Available in ac or dc (battery) operation



Model MP-18-006



# MOHAWK LIFTS



## HEAVY DUTY FOUR POST

### TR-33/35/50/75/110/120

- ✓ 33,000 To 120,000 lb. capacities
- ✓ 20', 25' Or 30' or longer track lengths up to 60'
- ✓ All position mechanical, hydraulic & electronic safety systems
- ✓ Alignment compatible with Hunter equipment



## HEAVY DUTY TWO POST

### TP-20, TP-26 & TP-30

- ✓ 20,000 Thru 30,000 lb. capacities
- ✓ ALI safety certified
- ✓ Clear floor & clear overhead
- ✓ All position safety locks
- ✓ A perfect all purpose fleet lift designed for cars & trucks
- ✓ 25 year structural warranty
- ✓ 10 year mechanical warranty



## PARALLELOGRAM

### PARALLELOGRAM LIFTS

- ✓ 35,000, 50,000, 75,000 & 100,000 lb. capacities
- ✓ Available in flush or surface mounted models
- ✓ 26' To 48' runway lengths
- ✓ All position mechanical, hydraulic & electronic safety systems
- ✓ Wheels free jacks available for tire & brake service
- ✓ Galvanized models available



## TURF LIFT OPTION

### TURF MAINTENANCE EQUIPMENT & AUTO SERVICE LIFT

- ✓ Use on Mohawk 10,000 through 18,000 lb. two post lifts
- ✓ Converts from frame engaging lift to turf maintenance lift for zero turn mowers, turf equipment and four wheelers
- ✓ 6,000 lb. capacity
- ✓ Clear floor work area
- ✓ Easily removed to again become a service lift



Model IA-10  
Accessory: 009-012-001

## FULL & MID HEIGHT MOBILE JACK STANDS

### MOBILE JACK STANDS

- ✓ 20,000 30,000 or 40,000 lb. capacities
- ✓ Complies with requirements of PASE standard for portable automotive lifting devices
- ✓ Equipped with a handle and large castors for easy movement
- ✓ Adjustable height stands are available in 30-47" and 47-77" varieties



## 2 POST DRIVE-ON LIFT

### SPEEDLANE ADAPTOR

- ✓ Available for all Mohawk 10,000 through 18,000 lb. 2 post lifts
- ✓ Easily turns a 2 post service lift into a drive on lift and back again
- ✓ Eliminates need to position swing arms, simply drive-on and begin working
- ✓ Provides full working access to underside of car
- ✓ Easily installed or removed



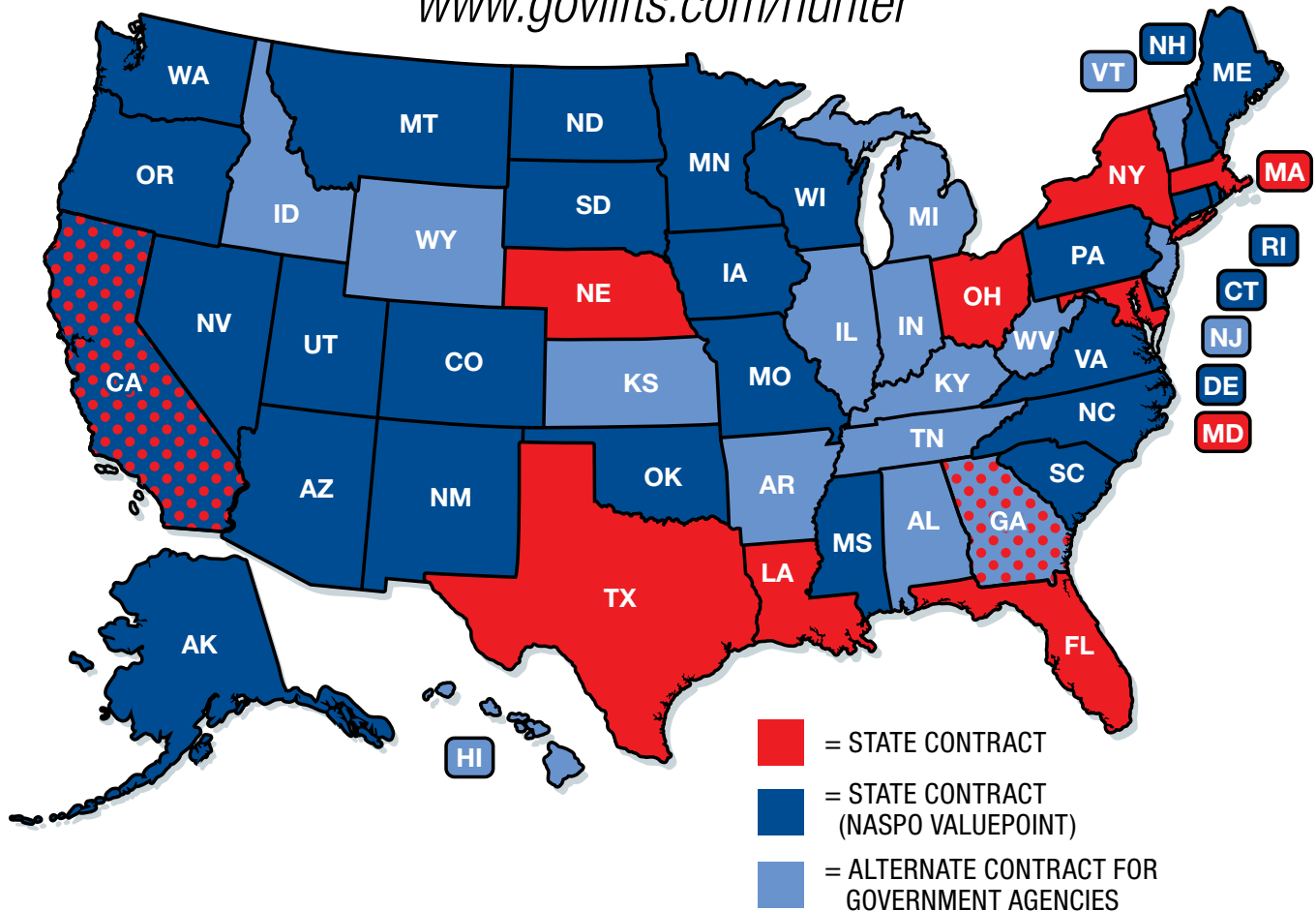
# MOHAWK LIFTS



# MOHAWK LIFTS

## Nationally Awarded Contracts

[www.govlifts.com/hunter](http://www.govlifts.com/hunter)



For government sales, contact:



# MOHAWK LIFTS

# 1-800-833-2006

[www.govlifts.com/hunter](http://www.govlifts.com/hunter)

[www.govlifts.com/hunter](http://www.govlifts.com/hunter)

P.O. Box 110  
Amsterdam, NY 12010

toll free: 800-833-2006

phone: 518-842-1431

email: [hunter@mohawklifts.com](mailto:hunter@mohawklifts.com)

[hunter@mohawklifts.com](mailto:hunter@mohawklifts.com)



NJPA is now Sourcewell



# HUNTER Engineering Company

[www.hunter.com](http://www.hunter.com)

0918AH

Form 7538-T, 09/18

Copyright © 2018, Hunter Engineering Company.

Because of continuing technological advancements, specifications, models and options are subject to change without notice.

NJ State Approved Co-op #65MCESCCPS

Bid Term: 11/16/18 - 11/15/20