



**Majestic**<sup>®</sup>

**TEAM COLLECTION**

2017 COLLECTION



OFFICIAL UNIFORM OF  
MAJOR LEAGUE BASEBALL.™

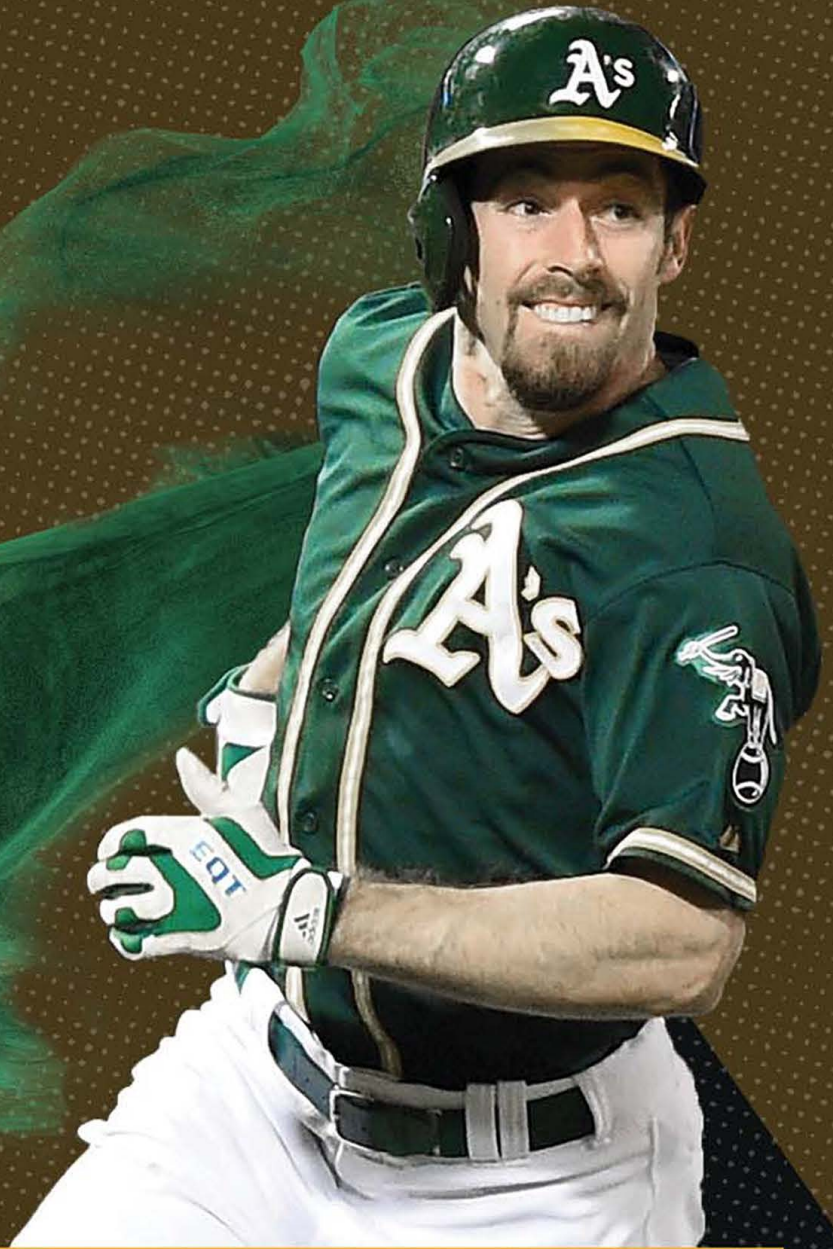




YOUTH LEAGUE

TRAVEL BALL

# EVOLU



HIGH SCHOOL & COLLEGE

BILLY BURNS CF OAKLAND A'S

# UTION

Only Majestic® can supply uniforms from Youth League to the Major Leagues.

AUTHENTIC COLLECTION

# NEW FLEX BASE™ JERSEY GA73 // GY73

- 1) GA73 (Adult) sizes 36/38/40/42/44/46/48/50/52  
2) GY73 (Youth) sizes S-XL

MSRP

\$55 (Adult) / \$45 (Youth)

- 100% Polyester Mock Mesh
- Lightweight fabrics provide enhanced stretch, moisture wicking and breathability
- Engineered side panel mesh gussets create critical cooling zones and allow for better freedom of movement
- Contoured hem shaping

\* AVAILABLE 9/1/16



AUTHENTIC COLLECTION

# NEW FLEX BASE™ BASEBALL PANT G011 // GY11

- 3) G011 (Adult) sizes below  
Men's Waist: 30/32/34/36/38/40/42/44  
Men's Inseam: Custom Inseam Lengths 24"-37"  
4) GY11 (Youth) sizes S-XL  
Youth Waist: S(23"), M(26"), L(29"), XL(32")  
Youth Inseam: Custom Inseam Lengths 23" - 32"

MSRP

\$67 (Adult) / \$55 (Youth)

- 7.66 oz, 100% Polyester Double Knit with Soil Release
- Mesh Gusset
- Gripper Elastic Waistband
- Double Knee
- Tunnel Belt Loops
- Double welt back pockets
- Open bottom and Relaxed fit
- Available with or without MLB Silhouetted Batter Logo on center back belt loop.
- Must be customized 2 week turn around

\* AVAILABLE 9/1/16





Patented mesh Air Belt technology creates better air flow, less bulk under the pant waist line, and enhanced stretch allows for maximum freedom of movement while helping the jersey stay tucked in.



Mesh gusset insert designed to create better air flow, stretch, and recovery with less riding up the pant leg openings.



Available with or without MLB Silhouetted Batter Logo on center back beltloop. 2 week start 3 week cancel. Graphic XPB



**ON THE SHELF**

STYLE NO.



964G  
TEAM BLACK  
Org/Graphic:  
MLB/XXX



968G  
TEAM BASE GRAY  
Org/Graphic:  
MLB/XXX



974G  
TEAM BRIGHT  
ROYAL  
Org/Graphic:  
MLB/XXX



973G  
TEAM SCARLET  
Org/Graphic:  
MLB/XXX



971G  
TEAM NAVY  
Org/Graphic:  
MLB/XXX

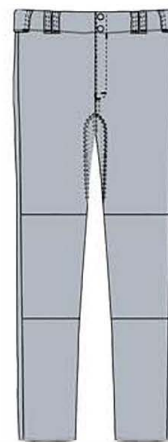


966G  
TEAM WHITE  
Org/Graphic:  
MLB/XXX

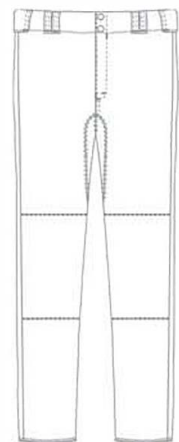
**ON THE SHELF**

**G011 // GY11**

STYLE NO.



968G  
TEAM BASE GRAY  
Org/Graphic:  
MLB/XPT



966G  
TEAM WHITE  
Org/Graphic:  
MLB/XPT



**OFFICIAL UNIFORM OF MAJOR LEAGUE BASEBALL:**  
majesticathletic.com/FlexBase



PRODUCT NAME

STYLE NO.



5) 6840 (Adult) sizes S-3XL  
6) 684Y (Youth) sizes S-XL

MSRP  
\$45 (Adult) / \$35 (Youth)  
Camo S50 (Adult) / \$40 (Youth)

- 100% Polyester Mock Mesh
- Cool Base® technology keeps players cool and comfortable
- Authentic On-Field Cool Base Fabric

\*NEW COLORS AVAILABLE 8/15/16



COOL BASE® 2-BUTTON COLORBLOCKED JERSEY

ON THE SHELF

IA03 // IY03



PRODUCT NAME

STYLE NO.



7) IA03 (Adult) sizes S-3XL  
8) IY03 (Youth) sizes S-XL

MSRP  
\$40 (Adult) / \$30 (Youth)  
Camo \$45 (Adult) / \$35 (Youth)

- 100% Polyester Mock Mesh
- Cool Base® technology keeps players cool and comfortable
- Authentic On-Field Cool Base Fabric

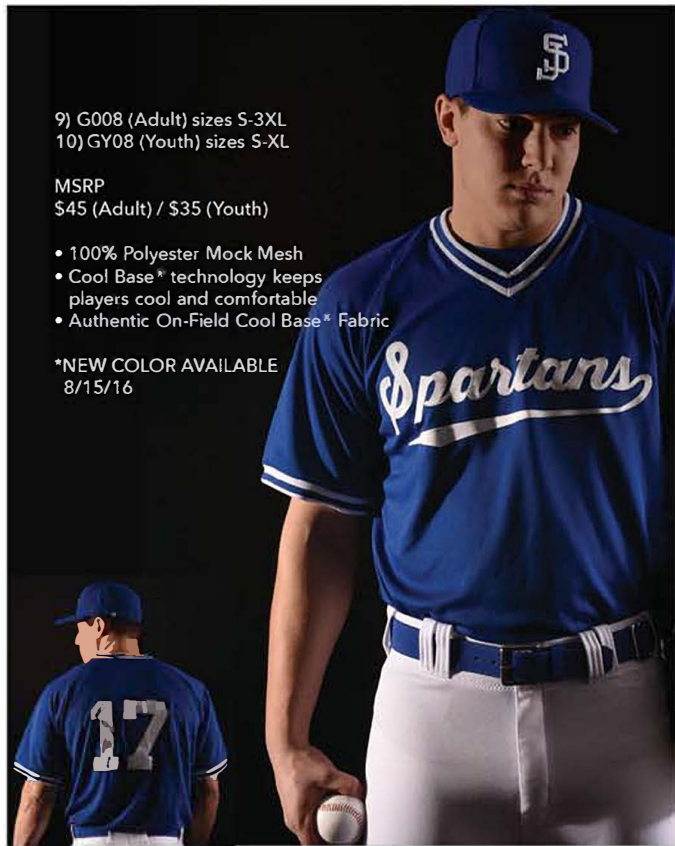
\*NEW COLORS AVAILABLE 8/15/16





PRODUCT NAME

STYLE NO.



9) G008 (Adult) sizes S-3XL  
10) GY08 (Youth) sizes S-XL

MSRP  
\$45 (Adult) / \$35 (Youth)

- 100% Polyester Mock Mesh
- Cool Base® technology keeps players cool and comfortable
- Authentic On-Field Cool Base® Fabric

\*NEW COLOR AVAILABLE  
8/15/16

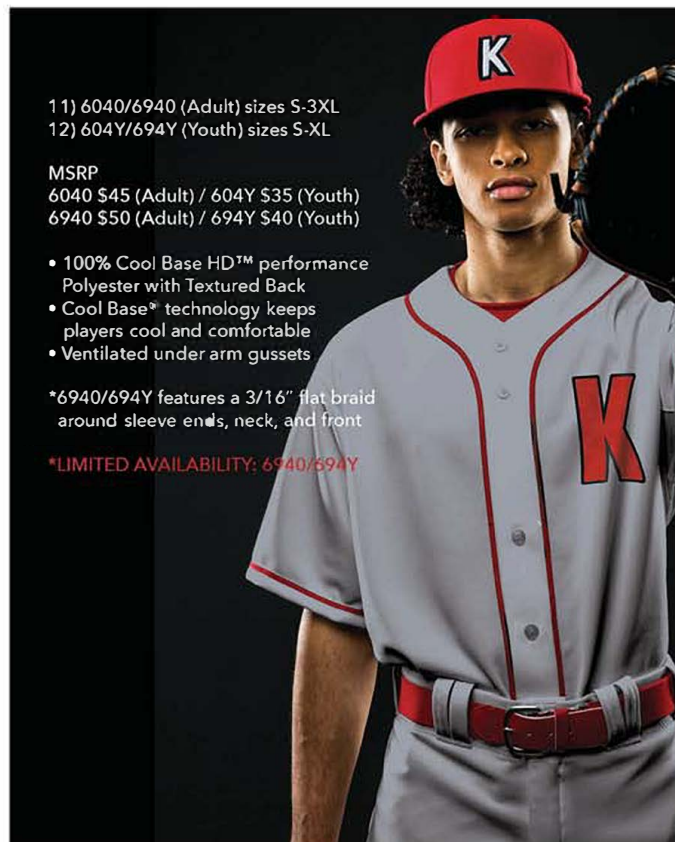


COOL BASE HD™ JERSEY / COOL BASE HD™ BRAIDED JERSEY

ON THE SHELF

6040 // 604Y, 6940 // 694Y

PRODUCT NAME



11) 6040/6940 (Adult) sizes S-3XL  
12) 604Y/694Y (Youth) sizes S-XL

MSRP  
6040 \$45 (Adult) / 604Y \$35 (Youth)  
6940 \$50 (Adult) / 694Y \$40 (Youth)

- 100% Cool Base HD™ performance Polyester with Textured Back
- Cool Base® technology keeps players cool and comfortable
- Ventilated under arm gussets

\*6940/694Y features a 3/16" flat braid around sleeve ends, neck, and front

\*LIMITED AVAILABILITY: 6940/694Y

6040/  
604Y



M017 PRO BLUE GRAY Org/Graphic: MAJ/XXX	901G CREAM Org/Graphic: MAJ/XXX	M099 PRO WHITE Org/Graphic: MAJ/XXX
--	--	--

6940/  
694Y



M482 PRO BLUE GRAY - PRO BLACK Org/Graphic: MAJ/XXX	M483 PRO BLUE GRAY - PRO DARK GREEN Org/Graphic: MAJ/XXX	M484 PRO BLUE GRAY - PRO NAVY Org/Graphic: MAJ/XXX	M485 PRO BLUE GRAY - PRO ROYAL Org/Graphic: MAJ/XXX	M486 PRO BLUE GRAY - PRO SCARLET Org/Graphic: MAJ/XXX
---	---	--	---	---



905G CREAM - PRO BLACK Org/Graphic: MAJ/XXX	906G CREAM - PRO DARK GREEN Org/Graphic: MAJ/XXX	907G CREAM - PRO NAVY Org/Graphic: MAJ/XXX	908G CREAM - PRO ROYAL Org/Graphic: MAJ/XXX	909G CREAM/PRO SCARLET Org/Graphic: MAJ/XXX
---	---	--	---	---



M104 PRO WHITE - PRO BLACK Org/Graphic: MAJ/XXX	M106 PRO WHITE - PRO DARK GREEN Org/Graphic: MAJ/XXX	M105 PRO WHITE - PRO NAVY Org/Graphic: MAJ/XXX	M102 PRO WHITE - PRO ROYAL Org/Graphic: MAJ/XXX	M103 PRO WHITE - PRO SCARLET Org/Graphic: MAJ/XXX
---	---	--	---	---



PRODUCT NAME

STYLE NO.



13) I383 (Adult) sizes S-3XL  
14) Y83 (Youth) sizes S-XL

MSRP  
\$35 (Adult) / \$30 (Youth)

- 100% Polyester Interlock
- Gussets: 100% Polyester Closed Hole Mesh with Moisture Wicking



M025 PROATH DARK GREEN - PRO WHITE  
Org/Graphic: MAJ/XXX

M007 PRO BLACK - PRO WHITE  
Org/Graphic: MAJ/XXX

M142 PRO GOLD - PRO BLACK  
Org/Graphic: MAJ/XXX

M475 PRO GRANITE - PRO WHITE  
Org/Graphic: MAJ/XXX

M069 PRO NAVY - PRO SCARLET  
Org/Graphic: MAJ/XXX

M059 PRO NAVY - PRO WHITE  
Org/Graphic: MAJ/XXX



M073 PRO ORANGE - PRO BLACK  
Org/Graphic: MAJ/XXX

M186 PRO ROYAL - PRO SCARLET  
Org/Graphic: MAJ/XXX

M215 PRO ROYAL - PRO WHITE  
Org/Graphic: MAJ/XXX

M089 PRO SCARLET - PRO WHITE  
Org/Graphic: MAJ/XXX

267K TEAM COLUMBIA - PRO WHITE  
Org/Graphic: MAJ/XXX

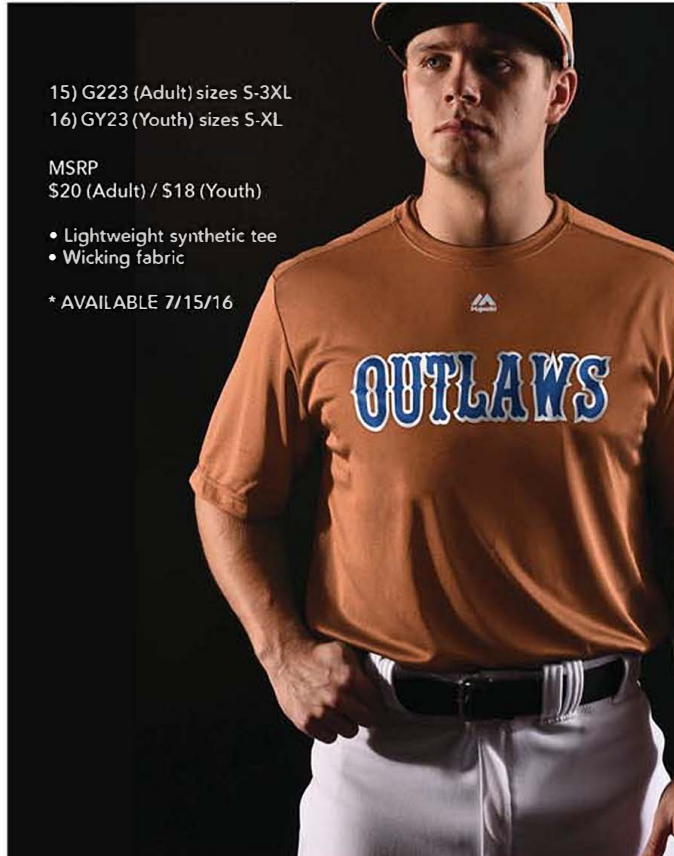
**NEW EVOLUTION TEE** **ON THE SHELF**

G223 // GY23



PRODUCT NAME

STYLE NO.



15) G223 (Adult) sizes S-3XL  
16) GY23 (Youth) sizes S-XL

MSRP  
\$20 (Adult) / \$18 (Youth)

- Lightweight synthetic tee
- Wicking fabric

\* AVAILABLE 7/15/16



408C BLAZING YELLOW  
Org/Graphic: MAJ/XXX

0484 ATHLETIC RED  
Org/Graphic: MAJ/XXX

0042 WHITE  
Org/Graphic: MAJ/XXX

1882 COASTAL BLUE  
Org/Graphic: MAJ/XXX

4505 REGAL PURPLE  
Org/Graphic: MAJ/XXX

0599 YELLOW GOLD  
Org/Graphic: MAJ/XXX

0565 DARK GREEN  
Org/Graphic: MAJ/XXX



M147 PRO GRANITE  
Org/Graphic: MAJ/XXX

1314 KELLY GREEN  
Org/Graphic: MAJ/XXX

127A BLACK  
Org/Graphic: MAJ/XXX

8415 BRIGHT CARDINAL  
Org/Graphic: MAJ/XXX

0826 MAROON  
Org/Graphic: MAJ/XXX

4506 ATHLETIC NAVY  
Org/Graphic: MAJ/XXX

1746 DEEP ROYAL  
Org/Graphic: MAJ/XXX



3253 DARK ORANGE  
Org/Graphic: MAJ/XXX

3446 VEGAS GOLD  
Org/Graphic: MAJ/XXX

4034 CLASSIC BROWN  
Org/Graphic: MAJ/XXX

2909 NEW TEXAS ORANGE  
Org/Graphic: MAJ/XXX

325 BRIGHT GREEN  
Org/Graphic: MAJ/XXX



**COOL BASE HD™ PIPED BASEBALL PANT** **ON THE SHELF**

Services Commission of New Jersey

Athletic Equipment and Supplies

8940 // 894Y

PRODUCT NAME

STYLE NO.



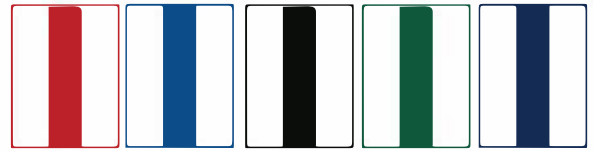
- 17) 8940 (Adult) sizes S-2XL  
Men's Waist: S(31"), M(33"), L(37"), XL(41"), 2XL(43")  
Men's Inseam: S(30"), M(31"), L(32"), XL(33"), 2XL(33")
- 18) 894Y (Youth) sizes S-XL  
Youth Waist: S(21.5"), M(25.5"), L(29.5"), XL(33.5")  
Youth Inseam: S(25"), M(26"), L(27"), XL(28")

MSRP  
\$60 (Adult) / \$47 (Youth)

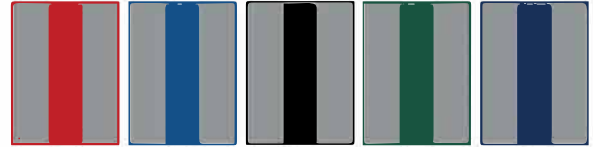
- 100% Cool Base\* HD Polyester Double Knit with Textured back (7.96 ounces)
- Official Pant of Major League Baseball
- High density polyester for added durability, stretch and performance
- Double knees for reinforcement
- Available with or without MLB Silhouetted Batter Logo on center back belt loop.
- Open bottom and Relaxed fit



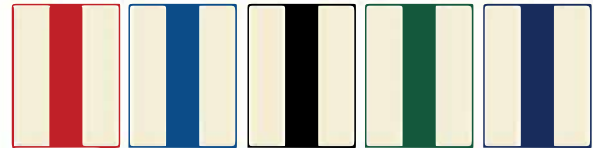
MLB Silhouetted Batter Logo is  
2 week start 3 week cancel. Graphic: BBY



- M103 PRO WHITE - PRO SCARLET  
Org/Graphic: MLB/XXX
- M102 PRO WHITE - PRO ROYAL  
Org/Graphic: MLB/XXX
- M104 PRO WHITE - PRO BLACK  
Org/Graphic: MLB/XXX
- M106 PRO WHITE - PRO DK GREEN  
Org/Graphic: MLB/XXX
- M105 PRO WHITE - PRO NAVY  
Org/Graphic: MLB/XXX



- M486 PRO BLUE GRAY - PRO SCARLET  
Org/Graphic: MLB/XXX
- M485 PRO BLUE GRAY - PRO ROYAL  
Org/Graphic: MLB/XXX
- M482 PRO BLUE GRAY - PRO BLACK  
Org/Graphic: MLB/XXX
- M483 PRO BLUE GRAY - PRO DK GREEN  
Org/Graphic: MLB/XXX
- M484 PRO BLUE GRAY - PRO NAVY  
Org/Graphic: MLB/XXX



- 909G CREAM - PRO SCARLET  
Org/Graphic: MLB/XXX
- 908G CREAM - PRO ROYAL  
Org/Graphic: MLB/XXX
- 905G CREAM - PRO BLACK  
Org/Graphic: MLB/XXX
- 906G CREAM - PRO DK GREEN  
Org/Graphic: MLB/XXX
- 907G CREAM - PRO NAVY  
Org/Graphic: MLB/XXX

**COOL BASE HD™ BASEBALL PANT** **ON THE SHELF**

8950 // 895Y

PRODUCT NAME

STYLE NO.

- 19) 8950 (Adult) sizes S-2XL  
Men's Waist: S(31"), M(33"), L(37"), XL(41"), 2XL(43")  
Men's Inseam: S(30"), M(31"), L(32"), XL(33"), 2XL(33")
- 20) 895Y (Youth) sizes S-XL  
Youth Waist: S(21.5"), M(25.5"), L(29.5"), XL(33.5")  
Youth Inseam: S(25"), M(26"), L(27"), XL(28")

MSRP  
\$57 (Adult) / \$45 (Youth)

- 100% Cool Base\* HD Polyester Double Knit with Textured back (7.96 ounces)
- Official Pant of Major League Baseball
- High density polyester for added durability, stretch and performance
- Double knees for reinforcement
- Available with or without MLB Silhouetted Batter Logo on center back belt loop.
- Open bottom and Relaxed fit

\* NEW COLOR AVAILABLE 8/15/16



MLB Silhouetted Batter Logo is  
2 week start 3 week cancel. Graphic: BBY



- M099 PRO WHITE  
Org/Graphic: MLB/XXX
- M017 PRO BLUE GRAY  
Org/Graphic: MLB/XXX



- 901G CREAM  
Org/Graphic: MLB/XXX
- M147 PRO GRANITE  
Org/Graphic: MLB/XXX

# COOL BASE HD™ BASEBALL PANT w/CUSTOM INSEAM

State of New Jersey

State Purchasing Services Commission of New Jersey

Athletic Equipment and Supplies

6013 // 6Y13



## PRODUCT NAME

## STYLE NO.

21) G013 (Adult) sizes S-2XL  
Men's Waist: S(31"), M(33"), L(37"), XL(41"), 2XL(43")  
Men's Inseam: Custom Inseam Lengths 24"-37"

22) GY13 (Youth) sizes S-XL  
Youth Waist: S(21.5"), M(25.5"), L(29.5"), XL(33.5")  
Youth Inseam: Custom Inseam Lengths 23"-32"

MSRP  
\$67 (Adult) / \$55 (Youth)

- 100% Cool Base® HD Polyester Double Knit with Textured back (7.96 ounces)
- Official Pant of Major League Baseball
- High density polyester for added durability, stretch and performance
- Double knees for reinforcement
- Available with or without MLB Silhouetted Batter Logo on center back belt loop.
- Open bottom and Relaxed fit
- Must Be Customized 2 Week Turn Around

\* NEW COLOR AVAILABLE 8/15/16

MLB Silhouetted Batter Logo is 2 week start 3 week cancel. Graphic XPB



M099  
PRO WHITE  
Org/Graphic:  
MLB/XPT



M017  
PRO BLUE GRAY  
Org/Graphic:  
MLB/XPT



901G  
CREAM  
Org/Graphic:  
MLB/XPT



M147  
PRO GRANITE  
Org/Graphic:  
MLB/XPT  
NEW

# COOL BASE HD™ THROWBACK PANT **ON THE SHELF**

## PRODUCT NAME

8960 // 896Y

## STYLE NO.



23) 8960 (Adult) sizes S-2XL  
Men's Waist: S(31"), M(33"), L(37"), XL(41"), 2XL(43")  
Men's Inseam: S(20"), M(20"), L(20"), XL(20"), 2XL(20")

24) 896Y (Youth) sizes S-XL  
Youth Waist: S(21.5"), M(25.5"), L(29.5"), XL(33.5")  
Youth Inseam: S(16"), M(16"), L(16"), XL(16")

MSRP  
\$50 (Adult) / \$40 (Youth)

- 100% Cool Base® HD Polyester Double Knit with Textured back (7.96 ounces)
- Official Pant of Major League Baseball
- High density polyester for added durability, stretch and performance
- Double knees for reinforcement
- Available with or without MLB Silhouetted Batter Logo on center back belt loop.
- Elastic Banded Bottom

MLB Silhouetted Batter Logo is 2 week start 3 week cancel. Graphic: BBY



M099  
PRO WHITE  
Org/Graphic:  
MLB/XXX



M017  
PRO BLUE GRAY  
Org/Graphic:  
MLB/XXX



901G  
CREAM  
Org/Graphic:  
MLB/XXX



PRODUCT NAME

STYLE NO.



25) I390 (Adult) sizes S-2XL  
 Men's Waist: S(30"), M(32"), L(36"), XL(40"), 2XL(42")  
 Men's Inseam: S(30"), M(31"), L(32"), XL(33"), 2XL(34")  
 26) IY90 (Youth) sizes S-XL  
 Youth Waist: S(21"), M(25"), L(29"), XL(33")  
 Youth Inseam: S(24"), M(25.5"), L(27"), XL(28")

MSRP  
 \$45 (Adult) / \$39 (Youth)

- 6.63oz., 100% Polyester Double Knit
- Soil Release Technology
- Relaxed fit, open bottom
- Double knees for reinforcement
- Curved side seam



M099  
 PRO WHITE  
 Org/Graphic:  
 MAJ/XXX



M017  
 PRO BLUE GRAY  
 Org/Graphic:  
 MAJ/XXX

COOL BASE® PREMIER RELAXED FIT BRAIDED PANT

ON THE SHELF

IB90 // IYB9



PRODUCT NAME

STYLE NO.



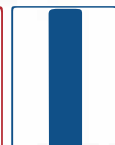
27) IB90 (Adult) sizes S-2XL  
 Men's Waist: S(30"), M(32"), L(36"), XL(40"), 2XL(42")  
 Men's Inseam: S(30"), M(31"), L(32"), XL(33"), 2XL(34")  
 28) IYB9 (Youth) sizes S-XL  
 Youth Waist: S(21"), M(25"), L(29"), XL(33")  
 Youth Inseam: S(24"), M(25.5"), L(27"), XL(28")

MSRP  
 \$50 (Adult) / \$45 (Youth)

- 6.63oz., 100% Polyester Double Knit
- Soil Release Technology
- Relaxed fit, open bottom
- Double knees for reinforcement
- Curved side seam



M103  
 PRO WHITE -  
 PRO SCARLET  
 Org/Graphic:  
 MAJ/XXX



M102  
 PRO WHITE -  
 PRO ROYAL  
 Org/Graphic:  
 MAJ/XXX



M104  
 PRO WHITE -  
 PRO BLACK  
 Org/Graphic:  
 MAJ/XXX



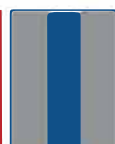
M106  
 PRO WHITE -  
 PRO DK GREEN  
 Org/Graphic:  
 MAJ/XXX



M105  
 PRO WHITE -  
 PRO NAVY  
 Org/Graphic:  
 MAJ/XXX



M486  
 PRO BLUE GRAY -  
 PRO SCARLET  
 Org/Graphic:  
 MAJ/XXX



M485  
 PRO BLUE GRAY -  
 PRO ROYAL  
 Org/Graphic:  
 MAJ/XXX



M482  
 PRO BLUE GRAY -  
 PRO BLACK  
 Org/Graphic:  
 MAJ/XXX



M483  
 PRO BLUE GRAY -  
 PRO DK GREEN  
 Org/Graphic:  
 MAJ/XXX



M484  
 PRO BLUE GRAY -  
 PRO NAVY  
 Org/Graphic:  
 MAJ/XXX



PRODUCT NAME

STYLE NO.

29) GJ27 (Adult) sizes S-3XL

MSRP  
\$125 (Adult)

- 100% Polyester Vintage Print
- Water resistant shell fabric
- Lightweight fabrics that help regulate body temperature
- 4 oz. polyfil quilted taffeta lining
- Synthetic insulation traps hot air for reduced heat loss and increased warmth
- Full zip opening with contrast color Majestic® locking zipper puller
- Funnel neck construction with contrast color tipping
- Contrast color shoulder piecing and back flanges
- Spandex jersey cuffs
- Pockets with brushed lining
- Cinched elastic bottom hem finish

\*Only left chest sewn or embroidered decoration is recommended. Please verify your logo or mark can be decorated as intended.

\*AVAILABLE 9/1/16



673L  
TEAM SCARLET-PRO  
GRANITE  
Org/Graphic:  
MLB/XXX



M354  
PRO GRANITE-  
PRO GRANITE  
Org/Graphic:  
MLB/XXX



674L  
TEAM DARK GREEN-  
PRO GRANITE  
Org/Graphic:  
MLB/XXX



672L  
TEAM BRIGHT ROYAL-  
PRO GRANITE  
Org/Graphic:  
MLB/XXX



775L  
TEAM BRICK-  
PRO GRANITE  
Org/Graphic:  
MLB/XXX



670L  
TEAM BLACK-  
PRO GRANITE  
Org/Graphic:  
MLB/XXX

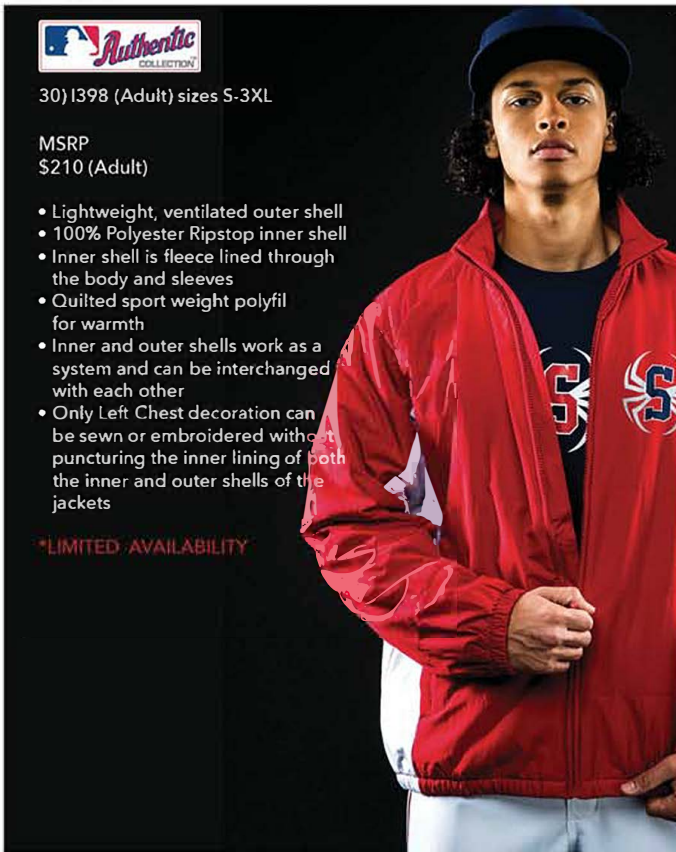


671L  
TEAM NAVY-PRO  
GRANITE  
Org/Graphic:  
MLB/XXX



**PRODUCT NAME**

**STYLE NO.**



30) I398 (Adult) sizes S-3XL

MSRP  
\$210 (Adult)

- Lightweight, ventilated outer shell
- 100% Polyester Ripstop inner shell
- Inner shell is fleece lined through the body and sleeves
- Quilted sport weight polyfil for warmth
- Inner and outer shells work as a system and can be interchanged with each other
- Only Left Chest decoration can be sewn or embroidered without puncturing the inner lining of both the inner and outer shells of the jackets

\*LIMITED AVAILABILITY



**Authentic Collection THERMA BASE™ 31 DOUBLE CLIMATE JACKET** **ON THE SHELF**

**I397**



**PRODUCT NAME**

**STYLE NO.**



31) I397 (Adult) sizes S-3XL

MSRP  
\$125 (Adult)

- Lightweight, ventilated outer shell
- 100% Polyester Ripstop inner shell
- Inner shell is fleece lined through the body and sleeves
- Quilted sport weight polyfil for warmth
- Inner and outer shells work as a system and can be interchanged with each other
- Only Left Chest decoration can be sewn or embroidered without puncturing the inner lining of both the inner and outer shells of the jackets

\*LIMITED AVAILABILITY



PRODUCT NAME

STYLE NO.



32) IJ18 (Adult) sizes S-3XL  
33) IJ8Y (Youth) sizes M-XL

MSRP  
\$75 (Adult) / \$67.50 (Youth)

- 100% Polyester Core Ripstop, 100% polyester mesh short sleeves.
- Half-zip short sleeve pullover jacket
- Chest and Upper back vents with mesh lining
- Embossed print at yoke
- Front pocket



**881J**  
TEAM SCARLET -  
TEAM BASE GRAY  
Org/Graphic:  
MLB/XXX



**886J**  
TEAM ORANGE -  
TEAM BASE GRAY  
Org/Graphic:  
MLB/XXX



**888J**  
TEAM COLUMBIA -  
TEAM BASE GRAY  
Org/Graphic:  
MLB/XXX



**887J**  
MAROON -  
TEAM BASE GRAY  
Org/Graphic:  
MLB/XXX



**885J**  
TEAM NAVY -  
TEAM BASE GRAY  
Org/Graphic:  
MLB/XXX



**882J**  
TEAM BLACK -  
TEAM BASE GRAY  
Org/Graphic:  
MLB/XXX



**884J**  
TEAM DARK GREEN -  
TEAM BASE GRAY  
Org/Graphic:  
MLB/XXX



**883J**  
TEAM BRIGHT ROYAL -  
TEAM BASE GRAY  
Org/Graphic:  
MLB/XXX



**M354**  
PRO GRANITE -  
PRO GRANITE  
Org/Graphic:  
MLB/XXX

NJ State Approved Co-op #65MCECCPS

Metuchen/Garden State Apparel

Bid Term: 5/9/18 - 5/8/20



PRODUCT NAME

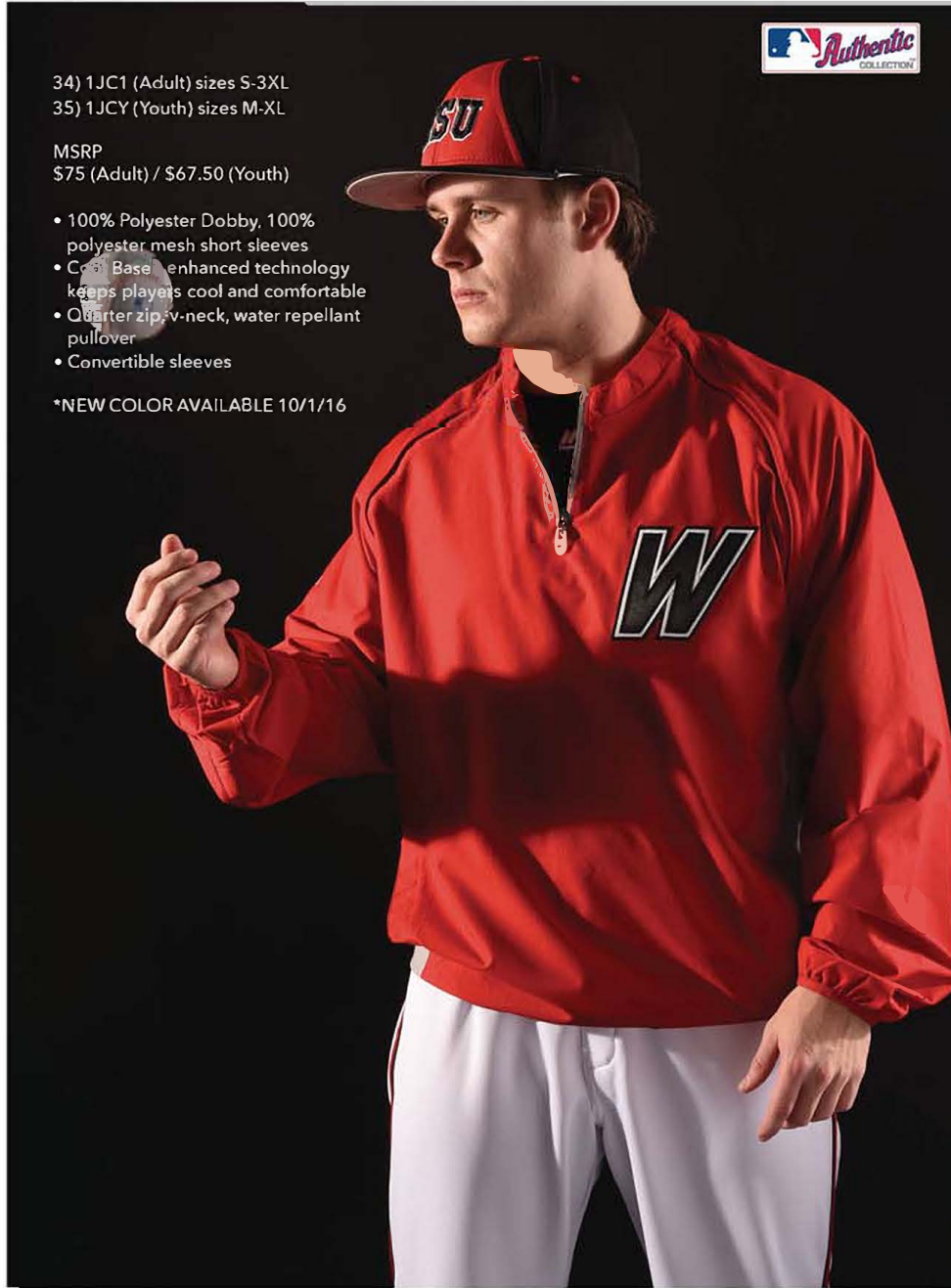
STYLE NO.

34) 1JC1 (Adult) sizes S-3XL  
35) 1JCY (Youth) sizes M-XL

MSRP  
\$75 (Adult) / \$67.50 (Youth)

- 100% Polyester Dobby, 100% polyester mesh short sleeves
- Cool Base® enhanced technology keeps players cool and comfortable
- Quarter zip, v-neck, water repellant pullover
- Convertible sleeves

\*NEW COLOR AVAILABLE 10/1/16



M193  
PRO SCARLET -  
PRO NAVY  
Org/Graphic:  
MLB/XXX



M098  
PRO SCARLET -  
PRO SILVER  
Org/Graphic:  
MLB/XXX



M012  
PRO BLACK -  
PRO SILVER  
Org/Graphic:  
MLB/XXX



M015  
PRO BLACK -  
PRO ORANGE  
Org/Graphic:  
MLB/XXX



M232  
PRO GRANITE -  
PRO SILVER  
Org/Graphic:  
MLB/XXX



M086  
PRO ROYAL -  
PRO SILVER  
Org/Graphic:  
MLB/XXX



M186  
PRO ROYAL -  
PRO SCARLET  
Org/Graphic:  
MLB/XXX



M071  
PRO NAVY -  
PRO SILVER  
Org/Graphic:  
MLB/XXX



M069  
PRO NAVY -  
PRO SCARLET  
Org/Graphic:  
MLB/XXX



M707  
PRO BLACK -  
YELLOW GOLD  
Org/Graphic:  
MLB/XXX  
LIMITED  
AVAILABILITY



M735  
PRO COLUMBIA -  
PRO SILVER  
Org/Graphic:  
MLB/XXX  
LIMITED  
AVAILABILITY



M073  
PRO ORANGE -  
PRO BLACK  
Org/Graphic:  
MLB/XXX  
LIMITED  
AVAILABILITY



M711  
PRO ATHLETIC DARK  
GREEN - YELLOW G OLD  
Org/Graphic:  
MLB/XXX  
NEW

PRODUCT NAME

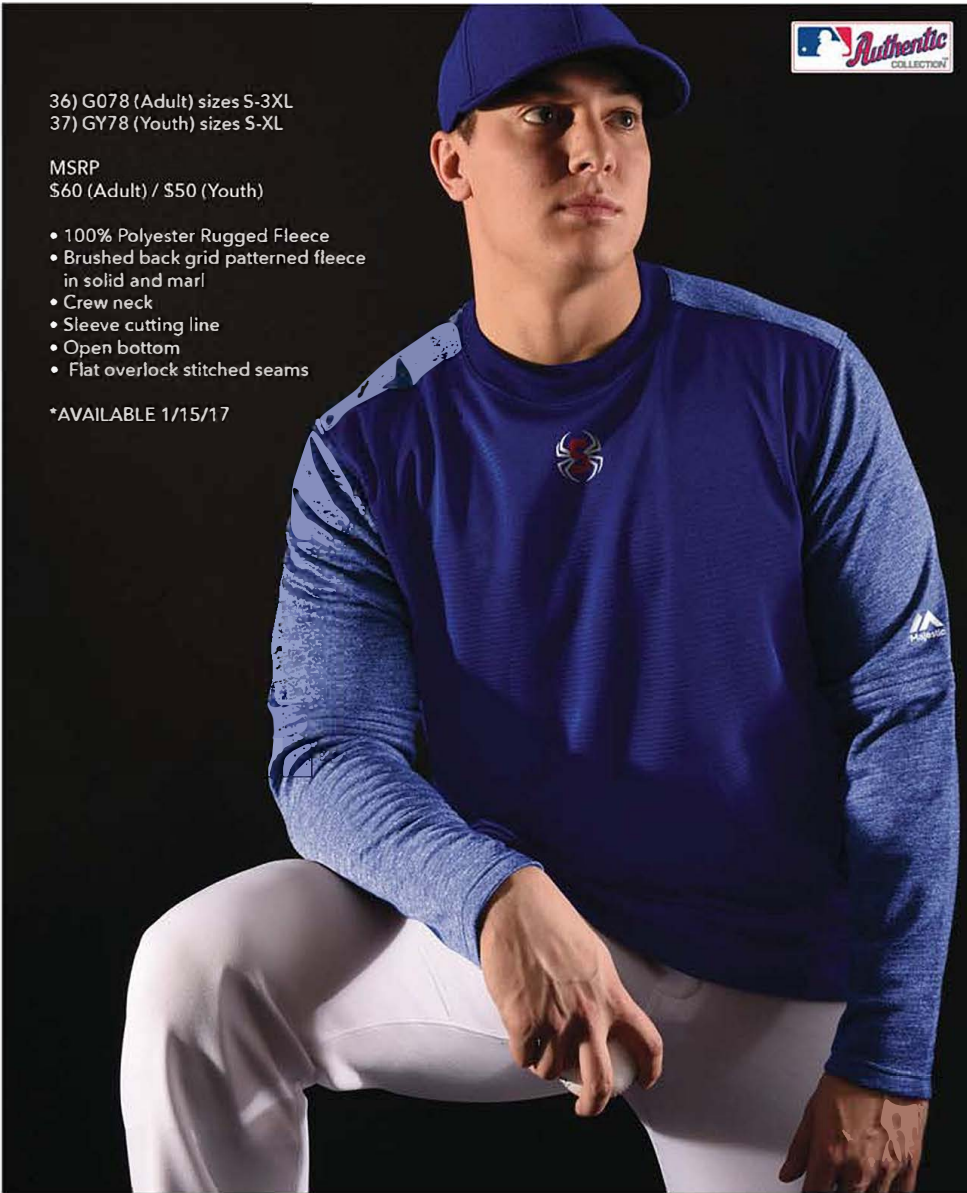
STYLE NO.

36) G078 (Adult) sizes S-3XL  
37) GY78 (Youth) sizes S-XL

MSRP  
\$60 (Adult) / \$50 (Youth)

- 100% Polyester Rugged Fleece
- Brushed back grid patterned fleece in solid and marl
- Crew neck
- Sleeve cutting line
- Open bottom
- Flat overlock stitched seams

\*AVAILABLE 1/15/17



**814L**  
TEAM BLACK -  
TEAM BLACK RUGGED  
HEATHER  
Org/Graphic:  
MLB/XXX



**809L**  
TEAM SCARLET -  
TEAM SCARLET  
RUGGED HEATHER  
Org/Graphic:  
MLB/XXX



**812L**  
TEAM BRIGHT ROYAL-  
ROYAL RUGGED  
HEATHER  
Org/Graphic:  
MLB/XXX



**810L**  
TEAM NAVY - NAVY  
RUGGED HEATHER  
Org/Graphic:  
MLB/XXX



**811L**  
TEAM DARK GREEN -  
TEAM DARK GREEN  
RUGGED HEATHER  
Org/Graphic:  
MLB/XXX





PRODUCT NAME

STYLE NO.



38) I328 (Adult) sizes S-3XL

MSRP  
\$70 (Adult)

- 100% Polyester Streak Fleece
- Kangaroo pockets
- Open bottom design creates a comfortable, less bulky fit
- The contrast color draw cord matches the inside hood that is lined with 100% polyester mesh to keep the inside hood dry and warm.



235K  
TEAM BLACK -  
FIRE RED  
(ORANGE)  
Org/Graphic:  
MLB/XXX



882J  
TEAM BLACK -  
TEAM BASE GRAY  
Org/Graphic:  
MLB/XXX



237K  
TEAM BLACK -  
TEAM GOLD  
Org/Graphic:  
MLB/XXX



308J  
TEAM DARK  
GREEN -  
TEAM GOLD  
Org/Graphic:  
MLB/XXX



248K  
TEAM SCARLET -  
TEAM NAVY  
Org/Graphic:  
MLB/XXX



307J  
TEAM SCARLET -  
TEAM BLACK  
Org/Graphic:  
MLB/XXX



885J  
TEAM NAVY -  
TEAM BASE GRAY  
Org/Graphic:  
MLB/XXX



945J  
TEAM NAVY -  
TEAM SCARLET  
Org/Graphic:  
MLB/XXX



309J  
TEAM BRIGHT ROYAL -  
TEAM SCARLET  
Org/Graphic:  
MLB/XXX



239K  
TEAM BRIGHT ROYAL -  
TEAM COLUMBIA  
Org/Graphic:  
MLB/XXX



M354  
PRO GRANITE -  
PRO GRANITE  
Org/Graphic:  
MLB/XXX

Authentic Collection Practice Pullover **ON THE SHELF**

1786 // 1Y60



PRODUCT NAME



39) 1786 (Adult) sizes S-3XL  
40) 1Y60 (Youth) sizes S-XL

MSRP  
\$60 (Adult) / \$50 (Youth)

- 100% Polyester grid fleece
- Midweight crew neck fleece pullover with vivid contrast flatlock stitching
- Front pockets with brushed mesh lining

\*LIMITED AVAILABILITY



945J  
TEAM NAVY -  
TEAM SCARLET  
Org/Graphic:  
MLB/XXX



542J  
TEAM NAVY -  
TEAM WHITE  
Org/Graphic:  
MLB/XXX



221J  
TEAM DARK GREEN -  
YELLOW GLOW  
Org/Graphic:  
MLB/XXX



222J  
TEAM GOLD -  
TEAM BLACK  
Org/Graphic:  
MLB/XXX



943J  
TEAM BRIGHT ROYAL -  
TEAM WHITE  
Org/Graphic:  
MLB/XXX



309J  
TEAM BRIGHT ROYAL -  
TEAM SCARLET  
Org/Graphic:  
MLB/XXX



234J  
TEAM SCARLET -  
TEAM WHITE  
Org/Graphic:  
MLB/XXX



310J  
TEAM BRICK -  
TEAM BLACK  
Org/Graphic:  
MLB/XXX



944J  
TEAM BLACK -  
TEAM SCARLET  
Org/Graphic:  
MLB/XXX



211J  
TEAM BLACK -  
SILVER GLOW  
Org/Graphic:  
MLB/XXX



212J  
TEAM BLACK -  
ORANGE GLOW  
Org/Graphic:  
MLB/XXX



231J  
FIRE RED (ORANGE) -  
BLUE GLOW  
Org/Graphic:  
MLB/XXX



230J  
TEAM PURPLE -  
TEAM WHITE  
Org/Graphic:  
MLB/XXX

PRODUCT NAME

STYLE NO.

41) 1329 (Adult) sizes S-3XL  
42) 132Y (Youth) sizes S-XL

MSRP  
\$50 (Adult) / \$40 (Youth)  
Camo \$65 (Adult) / \$55 (Youth)

- 100% Polyester Fleece
- Embossed sleeve pattern
- Self fabric cuff and waistband
- Home Plate insert at neck
- Homeplate dimensions: 3" wide x 3.5" length through center, 2.25" length on sides
- Drawcord on adult sizes only



M191  
PRO SCARLET -  
PRO GRANITE  
Org/Graphic:  
MAJ/XXX



943G  
PRO ATHLETIC DARK  
GREEN - GRANITE  
Org/Graphic:  
MAJ/XXX



944G  
MAROON -  
GRANITE  
Org/Graphic:  
MAJ/XXX



M119  
PRO BLACK -  
PRO GRANITE  
Org/Graphic:  
MAJ/XXX



M165  
PRO NAVY -  
PRO GRANITE  
Org/Graphic:  
MAJ/XXX



994G  
TEAM PURPLE -  
GRANITE  
Org/Graphic:  
MAJ/XXX



996G  
TEAM BRIGHT ROYAL -  
GRANITE  
Org/Graphic:  
MAJ/XXX



993G  
TEAM ORANGE -  
GRANITE  
Org/Graphic:  
MAJ/XXX



995G  
TEAM GOLD -  
GRANITE  
Org/Graphic:  
MAJ/XXX



M354  
PRO GRANITE -  
PRO GRANITE  
Org/Graphic:  
MAJ/XXX



M719  
USMC DESERT  
MARPAT DIGI  
CAMO -  
PRO TEAK  
Org/Graphic:  
MAJ/XMC

NJ State Approved Co-op #65MCECCPS

Metuchen/Garden State Apparel

Bid Term: 5/9/18 - 5/8/20



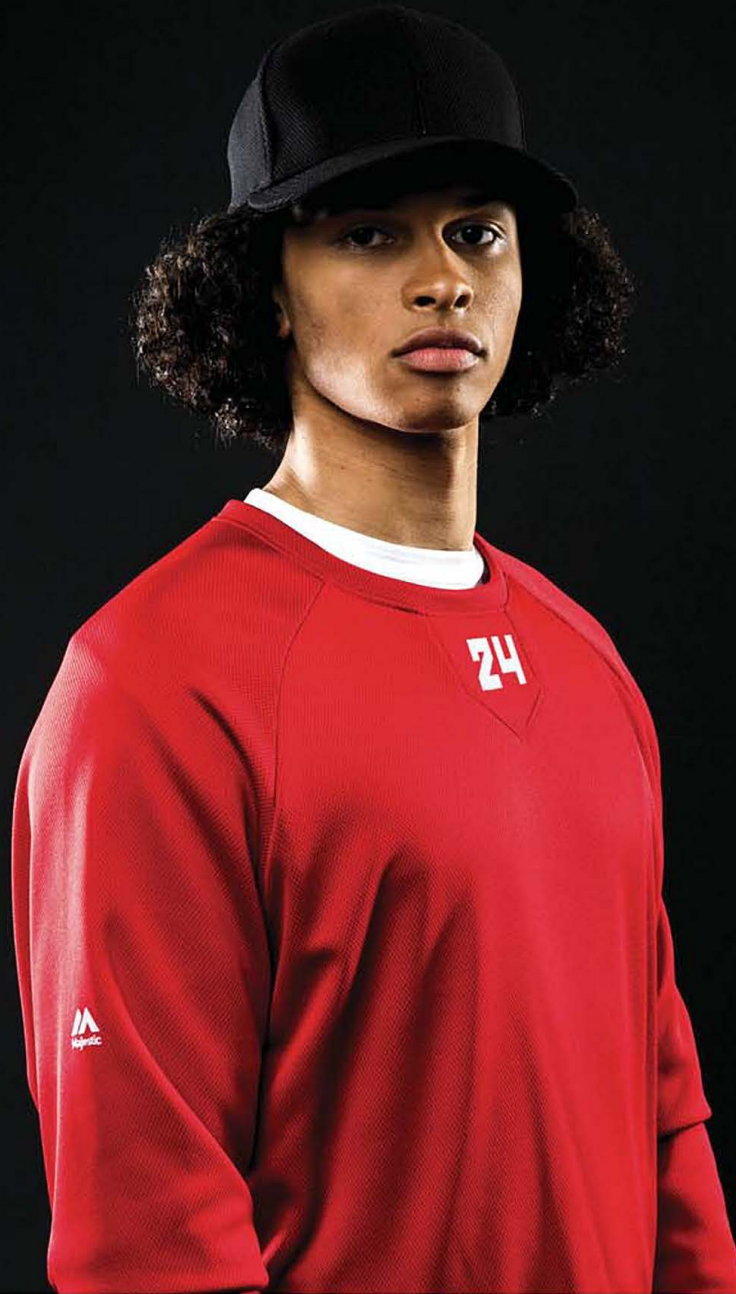
PRODUCT NAME

STYLE NO.

43) 1394 (Adult) sizes S-3XL  
 44) 139Y (Youth) sizes S-XL

MSRP  
 \$40 (Adult) / \$30 (Youth)

- 100% Polyester Textured Fleece
- Self fabric cuff and waistband
- Home Plate insert at neck
- Homeplate dimensions: 3" wide x 3.5" length through center, 2.25" length on sides



M087  
 PRO SCARLET  
 Org/Graphic:  
 MAJ/XXX



M006  
 PRO BLACK  
 Org/Graphic:  
 MAJ/XXX



M057  
 PRO NAVY  
 Org/Graphic:  
 MAJ/XXX



M003  
 PRO ATH DARK GREEN  
 Org/Graphic:  
 MAJ/XXX



965G  
 TEAM GOLD  
 Org/Graphic:  
 MAJ/XXX



988G  
 TEAM PURPLE  
 Org/Graphic:  
 MAJ/XXX



962G  
 TEAM ORANGE  
 Org/Graphic:  
 MAJ/XXX



0826  
 MAROON  
 Org/Graphic:  
 MAJ/XXX



974G  
 TEAM BRIGHT ROYAL  
 Org/Graphic:  
 MAJ/XXX



M147  
 PRO GRANITE  
 Org/Graphic:  
 MAJ/XXX

PRODUCT NAME

STYLE NO.



45) I386 (Adult) sizes S-3XL  
46) IY86 (Youth) sizes S-XL

MSRP  
\$32 (Adult) / \$27 (Youth)

- 92% Polyester/ 8% Spandex jersey with moisture wicking
- Fit = Fitted (not compression)

\*NEW COLORS AVAILABLE 8/1/16



M105  
PRO WHITE -  
PRO NAVY  
Org/Graphic:  
MAJ/XXX



M103  
PRO WHITE -  
PRO SCARLET  
Org/Graphic:  
MAJ/XXX



M102  
PRO WHITE -  
PRO ROYAL  
Org/Graphic:  
MAJ/XXX



M104  
PRO WHITE -  
PRO BLACK  
Org/Graphic:  
MAJ/XXX



665L  
PRO GRANITE -  
MAROON  
Org/Graphic:  
MAJ/XXX  
NEW



664L  
PRO GRANITE -  
TEAM ORANGE  
Org/Graphic:  
MAJ/XXX  
NEW



666L  
PRO GRANITE -  
TEAM DARK GREEN  
Org/Graphic:  
MAJ/XXX  
NEW

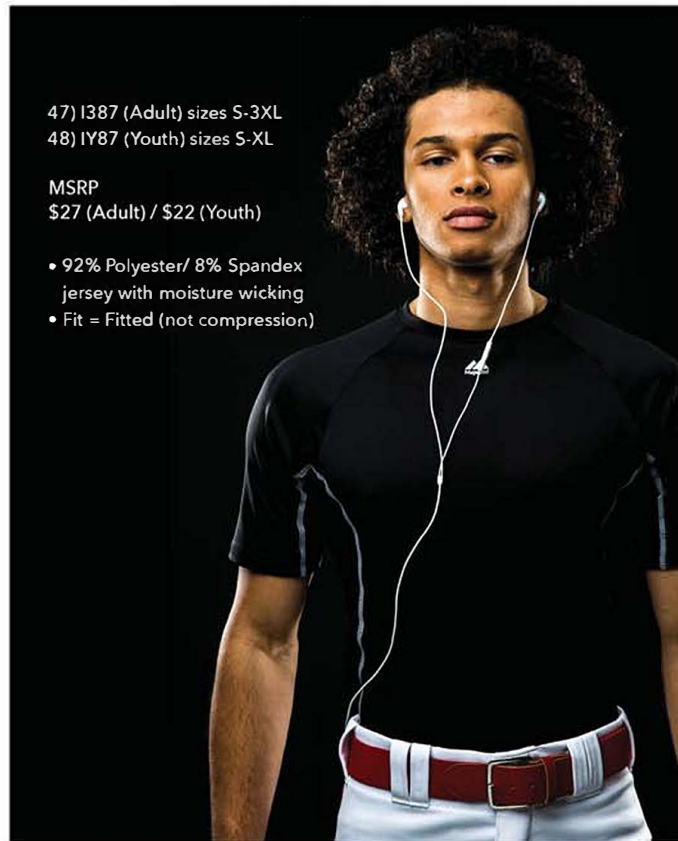


663L  
PRO GRANITE -  
TEAM COLUMBIA  
Org/Graphic:  
MAJ/XXX  
NEW

PREMIER 'VIPER' FITTED BASE LAYER

PRODUCT NAME

STYLE NO.



47) I387 (Adult) sizes S-3XL  
48) IY87 (Youth) sizes S-XL

MSRP  
\$27 (Adult) / \$22 (Youth)

- 92% Polyester/ 8% Spandex jersey with moisture wicking
- Fit = Fitted (not compression)



M007  
PRO BLACK -  
PRO WHITE  
Org/Graphic:  
MAJ/XXX



M059  
PRO NAVY -  
PRO WHITE  
Org/Graphic:  
MAJ/XXX



M215  
PRO ROYAL -  
PRO WHITE  
Org/Graphic:  
MAJ/XXX



M089  
PRO SCARLET -  
PRO WHITE  
Org/Graphic:  
MAJ/XXX

**PRODUCT NAME**



49) I341 (Adult) sizes S-2XL

MSRP  
\$40 (Adult)

- 100% Polyester Dazzle Back Mesh
- On-Seam pockets
- Zippered bottom leg openings
- 32" inseam on all sizes

**STYLE NO.**



M075  
PRO ROYAL  
Org/Graphic:  
MAJ/XXX



M006  
PRO BLACK  
Org/Graphic:  
MAJ/XXX



M057  
PRO NAVY  
Org/Graphic:  
MAJ/XXX



M087  
PRO SCARLET  
Org/Graphic:  
MAJ/XXX



M147  
PRO GRANITE  
Org/Graphic:  
MAJ/XXX

**PREMIER MESH TRAVEL SHORT**

**ON THE SHELF**

**1396 // IY96**

**PRODUCT NAME**



50) I396 (Adult) sizes S-2XL  
51) IY96 (Youth) sizes S-XL

MSRP  
\$25 (Adult) / \$20 (Youth)

- 100% Polyester Victory Mesh synthetic shorts
- Side Pockets
- Contrast piping down sides

**STYLE NO.**



M215  
PRO ROYAL-  
PRO WHITE  
Org/Graphic:  
MAJ/XXX



M475  
PRO GRANITE-  
PRO WHITE  
Org/Graphic:  
MAJ/XXX



M059  
PRO NAVY-  
PRO WHITE  
Org/Graphic:  
MAJ/XXX



M089  
PRO SCARLET-  
PRO WHITE  
Org/Graphic:  
MAJ/XXX



M007  
PRO BLACK-  
PRO WHITE  
Org/Graphic:  
MAJ/XXX

PRODUCT NAME

STYLE NO.

52) IA04 (Adult) sizes S-3XL

MSRP  
\$45 (Adult)

- 100% Polyester Victory Mesh with wicking
- Short sleeve polo with three button closure at neck opening

\*LIMITED AVAILABILITY



5402  
BLACK-  
DARK ORANGE  
Org/Graphic:  
MAJ/XXX



2011  
BLACK-  
YELLOW GOLD  
Org/Graphic:  
MAJ/XXX



3264  
DEEP ROYAL-  
ATHLETIC RED  
Org/Graphic:  
MAJ/XXX



5187  
GRANITE-  
BLACK  
Org/Graphic:  
MAJ/XXX



4512  
ATHLETIC NAVY-  
ATHLETIC RED  
Org/Graphic:  
MAJ/XXX



1224  
ATHLETIC RED-  
BLACK  
Org/Graphic:  
MAJ/XXX



4521  
ATHLETIC RED-  
ATHLETIC NAVY  
Org/Graphic:  
MAJ/XXX

UM01



PRODUCT NAME

STYLE NO.



53) UM01 (Adult) sizes S-3XL

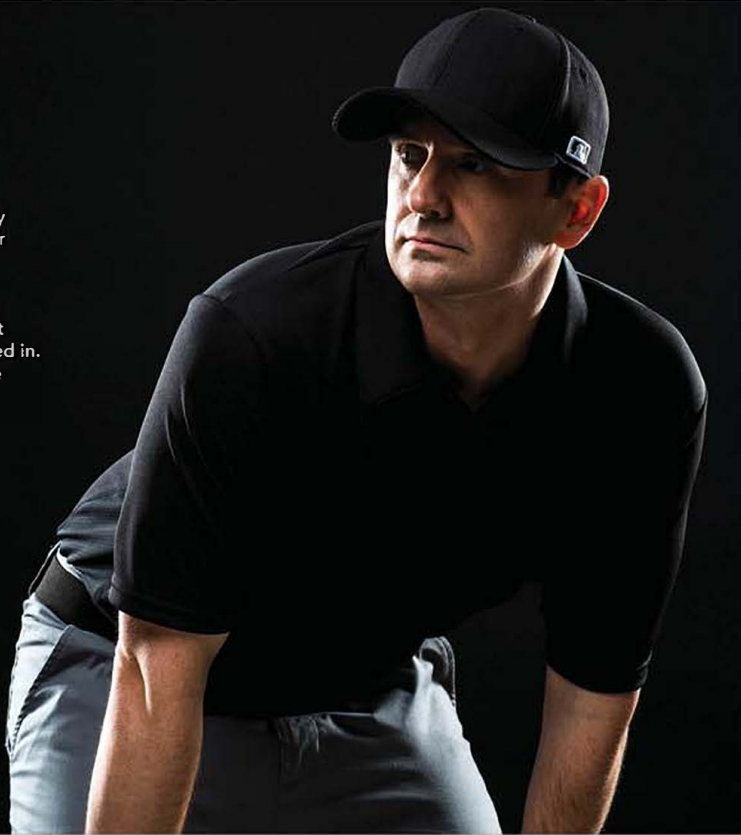
MSRP  
\$50 (Adult)

- 100% Polyester Mock Mesh Body
- 100% Polyester pin hole mesh air belt, creates better air flow, less bulk under the pant waist line, and enhanced stretch allows for maximum freedom of movement while helping the polo stay tucked in.
- Short sleeve polo shirt with three button closure at neck opening

\*LIMITED AVAILABILITY



Available with MLB silhouetted batter logo on back neck.  
When adding Batter: 2 week start ship 3 week cancel  
Org/Graphic: MLB/BTB



M006  
PRO BLACK  
Org/Graphic:  
MAJ/XXX

COOL BASE® UMPIRE POLO **ON THE SHELF**

UM02



PRODUCT NAME

54) UM02 (Adult) sizes S-3XL

MSRP  
\$50 (Adult)

- 100% Polyester Mock Mesh Body
- 100% Polyester pin hole mesh air belt, creates better air flow, less bulk under the pant waist line, and enhanced stretch allows for maximum freedom of movement while helping the polo stay tucked in.
- Short sleeve polo shirt with three button closure at neck opening

\*LIMITED AVAILABILITY



M212  
PRO NAVY -  
PRO SCARLET-  
PRO WHITE  
Org/Graphic:  
MAJ/XXX

# MLB® COOL BASE® PRO STYLE GAME JERSEY 6840 // 684Y

55) 6840 (Adult) sizes S-3XL  
56) 684Y (Youth) sizes S-XL

MSRP  
\$68 (Adult) / \$60 (Youth)

- 100% Polyester Mock Mesh
- Cool Base® technology keeps players cool and comfortable
- Authentic On-Field Cool Base Fabric
- Woven Heat Application

\*WOVEN APPLICATIONS CAN BE APPLIED TO ALL 6840 / 684Y COLORS. PLEASE CONTACT SALES REP FOR MORE INFORMATION

\* TEAM COLORS ARE "ON THE SHELF" ALL OTHER COLORS WILL REQUIRE A 2 WEEK START SHIP AND 3 WEEK CANCEL

\*6840 (ADULT) GRAPHIC CODES: M6A // M6C  
\*684Y (YOUTH) GRAPHIC CODES: M6B // M6D

\*NEWTEAM WORDMARKS OR COLORS AVAILABLE 9/15/16



ON THE SHELF







DIAMONDBACKS  
PRO GRANITE  
Color/Org: M147 / DKS  
Graphic: M6A/M6B  
**NEW**



BRAVES  
PRO NAVY  
Color/Org: M057 / AW  
Graphic: M6A/M6B



ORIOLES  
PRO BLACK  
Color/Org: M006 / OLE  
Graphic: M6A/M6B



RED SOX  
PRO NAVY  
Color/Org: M057 / BQ  
Graphic: M6A/M6B



CUBS  
TEAM BRIGHT ROYAL  
Color/Org: 974G / EJ  
Graphic: M6A/M6B



WHITE SOX  
PRO BLACK  
Color/Org: M006 / RX  
Graphic: M6A/M6B



REDS  
PRO SCARLET  
Color/Org: M087 / RED  
Graphic: M6A/M6B



INDIANS  
PRO NAVY  
Color/Org: M057 / IND  
Graphic: M6A/M6B



ROCKIES  
TEAM PURPLE  
Color/Org: 988G / DNV  
Graphic: M6A/M6B  
**NEW**



TIGERS  
PRO NAVY  
Color/Org: M057 / DG  
Graphic: M6A/M6B



ASTROS  
PRO NAVY  
Color/Org: M057 / HUS  
Graphic: M6A/M6B



ROYALS  
TEAM COLUMBIA  
Color/Org: 967G / ROY  
Graphic: M6A/M6B  
**NEW**



ANGELS  
PRO SCARLET  
Color/Org: M087 / ANG  
Graphic: M6A/M6B



DODGERS  
TEAM BRIGHT ROYAL  
Color/Org: 974G / LD  
Graphic: M6A/M6B



MARLINS  
TEAM ORANGE  
Color/Org: 962G / MSR  
Graphic: M6A/M6B  
**NEW**



BREWERS  
TEAM NUGGET GOLD  
Color/Org: 985G / MBW  
Graphic: M6A/M6B  
**NEW**



TWINS  
PRO NAVY  
Color/Org: M057 / TWI  
Graphic: M6A/M6B



METS  
TEAM BRIGHT ROYAL  
Color/Org: 974G / NME  
Graphic: M6A/M6B



YANKEES  
PRO NAVY  
Color/Org: M057 / NK  
Graphic: M6A/M6B



ATHLETICS  
PRO ATH DARK GREEN  
Color/Org: M003 / FZ  
Graphic: M6A/M6B



PHILLIES  
PRO SCARLET  
Color/Org: M087 / PP  
Graphic: M6A/M6B



PIRATES  
TEAM GOLD  
Color/Org: 965G / PBI  
Graphic: M6A/M6B  
**NEW**



PADRES  
TEAM BROWN  
Color/Org: 660L / PXD  
Graphic: M6A/M6B  
**NEW**



GIANTS  
PRO BLACK  
Color/Org: M006 / GIA  
Graphic: M6A/M6B



MARINERS  
CREAM  
Color/Org: 901G / EV  
Graphic: M6A/M6B  
**NEW**



CARDINALS  
PRO SCARLET  
Color/Org: M087 / SCN  
Graphic: M6A/M6B



RAYS  
PRO NAVY  
Color/Org: M057 / RAY  
Graphic: M6A/M6B



RANGERS  
TEAM BRIGHT ROYAL  
Color/Org: 974G / TRA  
Graphic: M6A/M6B



BLUE JAYS  
TEAM BRIGHT ROYAL  
Color/Org: 974G / TOR  
Graphic: M6A/M6B



NATIONALS  
PRO SCARLET  
Color/Org: M087 / WTL  
Graphic: M6A/M6B



DIAMONDBACKS  
TEAM WHITE  
Color/Org: 966G / DKS  
Graphic: M6C/M6D



BRAVES  
TEAM WHITE  
Color/Org: 966G / AW  
Graphic: M6C/M6D



ORIOLES  
TEAM WHITE  
Color/Org: 966G / OLE  
Graphic: M6C/M6D



RED SOX  
TEAM WHITE  
Color/Org: 966G / BQ  
Graphic: M6C/M6D



CUBS  
TEAM WHITE  
Color/Org: 966G / EJ  
Graphic: M6C/M6D



WHITE SOX  
TEAM WHITE  
Color/Org: 966G / RX  
Graphic: M6C/M6D



REDS  
TEAM WHITE  
Color/Org: 966G / RED  
Graphic: M6C/M6D



INDIANS  
TEAM WHITE  
Color/Org: 966G / IND  
Graphic: M6C/M6D



ROCKIES  
TEAM WHITE  
Color/Org: 966G / DNV  
Graphic: M6C/M6D



TIGERS  
TEAM WHITE  
Color/Org: 966G / DG  
Graphic: M6C/M6D



ASTROS  
TEAM WHITE  
Color/Org: 966G / HUS  
Graphic: M6C/M6D



ROYALS  
TEAM WHITE  
Color/Org: 966G / ROY  
Graphic: M6C/M6D



ANGELS  
TEAM WHITE  
Color/Org: 966G / ANG  
Graphic: M6C/M6D



DODGERS  
TEAM WHITE  
Color/Org: 966G / LD  
Graphic: M6C/M6D



MARLINS  
TEAM WHITE  
Color/Org: 966G / MSR  
Graphic: M6C/M6D



BREWERS  
TEAM WHITE  
Color/Org: 966G / MBW  
Graphic: M6C/M6D



TWINS  
TEAM WHITE  
Color/Org: 966G / TWI  
Graphic: M6C/M6D



METS  
TEAM WHITE  
Color/Org: 966G / NME  
Graphic: M6C/M6D



YANKEES  
TEAM WHITE  
Color/Org: 966G / NK  
Graphic: M6C/M6D



ATHLETICS  
TEAM WHITE  
Color/Org: 966G / FZ  
Graphic: M6C/M6D



PHILLIES  
TEAM WHITE  
Color/Org: 966G / PP  
Graphic: M6C/M6D



PIRATES  
TEAM WHITE  
Color/Org: 966G / PBI  
Graphic: M6C/M6D



PADRES  
TEAM WHITE  
Color/Org: 966G / PXD  
Graphic: M6C/M6D



GIANTS  
TEAM WHITE  
Color/Org: 966G / GIA  
Graphic: M6C/M6D



MARINERS  
TEAM WHITE  
Color/Org: 966G / EV  
Graphic: M6C/M6D



CARDINALS  
TEAM WHITE  
Color/Org: 966G / SCN  
Graphic: M6C/M6D



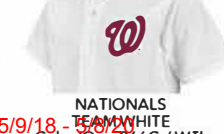
RAYS  
TEAM WHITE  
Color/Org: 966G / RAY  
Graphic: M6C/M6D



RANGERS  
TEAM WHITE  
Color/Org: 966G / TRA  
Graphic: M6C/M6D



BLUE JAYS  
TEAM WHITE  
Color/Org: 966G / TOR  
Graphic: M6C/M6D



NATIONALS  
TEAM WHITE  
Color/Org: 966G / WTL  
Graphic: M6C/M6D

# MLB® COOL BASE® V-NECK JERSEY G008 // GY08

57) G008 (Adult) sizes S-3XL  
58) GY08 (Youth) sizes 5-XL

MSRP  
\$50 (Adult) / \$40 (Youth)

- 100% Polyester Mock Mesh
- Cool Base® technology keeps players cool and comfortable
- Authentic On-Field Cool Base Fabric
- Screenprinted team logo or wordmark

\* NEW TEAM/COLOR AVAILABLE: 9/15/16





PRODUCT NAME

STYLE NO.



BRAVES  
TEAM NAVY-  
TEAM WHITE  
TEAM NAVY  
Color/Org: 408K / AW  
Graphic: TLQ



ORIOLES  
TEAM ORANGE-  
TEAM BLACK-  
TEAM WHITE  
Color/Org: 419K / BLI  
Graphic: TLQ



RED SOX  
TEAM BASE GRAY-  
TEAM NAVY-  
TEAM SCARLET  
Color/Org: 415K / BQ  
Graphic: TLQ



CUBS  
TEAM BRIGHT ROYAL-  
TEAM WHITE  
TEAM BRIGHT ROYAL  
Color/Org: 409K / EJ  
Graphic: TLQ



WHITE SOX  
TEAM BLACK-  
TEAM WHITE-  
TEAM BLACK  
Color/Org: 411K / RX  
Graphic: TLQ



REDS  
TEAM WHITE-  
TEAM BLACK-  
TEAM SCARLET  
Color/Org: 412K / RED  
Graphic: TLQ



TIGERS  
TEAM NAVY-  
TEAM WHITE-  
TEAM NAVY  
Color/Org: 408K / DG  
Graphic: TLQ



DODGERS  
TEAM BRIGHT ROYAL-  
TEAM WHITE-  
TEAM BRIGHT ROYAL  
Color/Org: 409K / LD  
Graphic: TLQ



YANKEES  
TEAM NAVY-  
TEAM WHITE-  
TEAM NAVY  
Color/Org: 408K / NK  
Graphic: TLQ



ATHLETICS  
TEAM DARK GREEN-  
TEAM GOLD-  
TEAM WHITE  
Color/Org: 416K / FZ  
Graphic: TLQ



PHILLIES  
TEAM SCARLET-  
TEAM WHITE-  
TEAM SCARLET  
Color/Org: 410K / PP  
Graphic: TLQ



PIRATES  
TEAM GOLD-  
TEAM BLACK-  
TEAM WHITE  
Color/Org: 879L / PTB  
Graphic: TLQ  
NEW



GIANTS  
TEAM ORANGE-  
TEAM BLACK-  
TEAM WHITE  
Color/Org: 419K / GTI  
Graphic: TLQ



CARDINALS  
TEAM SCARLET-  
TEAM WHITE-  
TEAM SCARLET  
Color/Org: 410K / SCN  
Graphic: TLQ



RAYS  
TEAM NAVY-  
TEAM WHITE-  
TEAM NAVY  
Color/Org: 408K / RAY  
Graphic: TLQ



NATIONALS  
TEAM WHITE-  
TEAM NAVY-  
TEAM SCARLET  
Color/Org: 413K / WTL  
Graphic: TLQ

# MLB® PREMIER EAGLE 2-BUTTON COLORBLOCKED JERSEY I383 // IY83



59) I383 (Adult) sizes S-3XL  
60) IY83 (Youth) sizes S-XL

MSRP  
\$35 (Adult) / \$30 (Youth)

- 100% Polyester Interlock
- Gussets: 100% Polyester Closed Hole Mesh with Moisture Wicking
- Screenprinted team logo or wordmark

\*NEW TEAM WORDMARKS AVAILABLE 8/15/16





PRODUCT NAME

STYLE NO.



ARIZONA DIAMONDBACKS  
PRO GRANITE-PRO WHITE  
Color/Org: M475 / DKS  
Graphic: TLK



ATLANTA BRAVES  
PRO NAVY-PRO SCARLET  
Color/Org: M069 / AW  
Graphic: TLK



BALTIMORE ORIOLAS  
PRO ORANGE-PRO BLACK  
Color/Org: M073 / BLI  
Graphic: TLK



BOSTON RED SOX  
PRO NAVY-PRO SCARLET  
Color/Org: M069 / BQ  
Graphic: TLK



CHICAGO CUBS  
PRO ROYAL-PRO SCARLET  
Color/Org: M186 / EJ  
Graphic: TLK



CHICAGO WHITE SOX  
PRO BLACK-PRO WHITE  
Color/Org: M007 / RX  
Graphic: TLK



CINCINNATI REDS  
PRO SCARLET-PRO WHITE  
Color/Org: M089 / RED  
Graphic: TLK



CLEVELAND INDIANS  
PRO NAVY-PRO SCARLET  
Color/Org: M069 / IDS  
Graphic: TLK



COLORADO ROCKIES  
PRO BLACK-PRO WHITE  
Color/Org: M007 / DNV  
Graphic: TLK



DETROIT TIGERS  
PRO NAVY-PRO WHITE  
Color/Org: M059 / DG  
Graphic: TLK



HOUSTON ASTROS  
PRO NAVY-PRO WHITE  
Color/Org: M059 / HUS  
Graphic: TLK



KANSAS CITY ROYALS  
TEAM COLUMBIA-PRO WHITE  
Color/Org: 267K / ROY  
Graphic: TLK



LOS ANGELES ANGELS  
PRO SCARLET-PRO WHITE  
Color/Org: M089 / ANG  
Graphic: TLK



LOS ANGELES DODGERS  
PRO ROYAL-PRO WHITE  
Color/Org: M215 / LD  
Graphic: TLK



MIAMI MARLINS  
PRO BLACK-PRO WHITE  
Color/Org: M007 / MSR  
Graphic: TLK



MILWAUKEE BREWERS  
TEAM COLUMBIA-PRO WHITE  
Color/Org: 267K / MBW  
Graphic: TLK



MINNESOTA TWINS  
PRO NAVY-PRO SCARLET  
Color/Org: M069 / TWI  
Graphic: TLK



NEW YORK METS  
PRO GRANITE-PRO WHITE  
Color/Org: M475 / NME  
Graphic: TLK



NEW YORK YANKEES  
PRO NAVY-PRO WHITE  
Color/Org: M059 / NK  
Graphic: TLK



OAKLAND ATHLETICS  
PRO ATHLETIC DARK GREEN-  
PRO WHITE  
Color/Org: M025 / FZ  
Graphic: TLK



PHILADELPHIA PHILLIES  
PRO SCARLET-PRO WHITE  
Color/Org: M089 / PP  
Graphic: TLK



PITTSBURGH PIRATES  
PRO GOLD-PRO BLACK  
Color/Org: M142 / PBI  
Graphic: TLK



SAN DIEGO PADRES  
PRO NAVY-PRO WHITE  
Color/Org: M059 / PXD  
Graphic: TLK



SAN FRANCISCO GIANTS  
PRO ORANGE-PRO BLACK  
Color/Org: M073 / GTI  
Graphic: TLK



SEATTLE MARINERS  
PRO NAVY-PRO WHITE  
Color/Org: M059 / EV  
Graphic: TLK



ST. LOUIS CARDINALS  
PRO SCARLET-PRO WHITE  
Color/Org: M089 / SCN  
Graphic: TLK



TAMPA BAY RAYS  
TEAM COLUMBIA-PRO WHITE  
Color/Org: 267K / RAY  
Graphic: TLK



TEXAS RANGERS  
PRO ROYAL-PRO SCARLET  
Color/Org: M186 / TRA  
Graphic: TLK



TORONTO BLUE JAYS  
PRO ROYAL-PRO WHITE  
Color/Org: M215 / TOR  
Graphic: TLK



WASHINGTON NATIONALS  
PRO GRANITE-PRO WHITE  
Color/Org: M475 / WTL  
Graphic: TLK

# NEW MLB® EVOLUTION TEE G223 // GY23



61) G223 (Adult) sizes S-3XL  
62) GY23 (Youth) sizes S-XL

MSRP  
\$25 (Adult) / \$23 (Youth)

- Lightweight synthetic tee
- Wicking fabric
- Short sleeve crew neck synthetic tee, developed with super lightweight polyester, allowing for maximum breathability and moisture management

\* AVAILABLE 8/15/16





PRODUCT NAME

STYLE NO.



**DIAMONDBACKS**  
PRO GRANITE,  
BRIGHT CARDINAL  
Color/Org: M147, 8415 / DKS  
Graphic: TLJ



**BRAVES**  
ATHLETIC NAVY  
Color/Org: 4506 / AW  
Graphic: TLJ



**ORIOLES**  
DARK ORANGE  
Color/Org: 3253 / BLI  
Graphic: TLJ



**RED SOX**  
ATHLETIC NAVY  
Color/Org: 4506 / BQ  
Graphic: TLJ



**CUBS**  
DEEP ROYAL  
Color/Org: 1746 / EJ  
Graphic: TLJ



**WHITE SOX**  
WHITE  
Color/Org: 0042 / RX  
Graphic: TLJ



**REDS**  
ATHLETIC RED  
Color/Org: 0484 / RED  
Graphic: TLJ



**INDIANS**  
ATHLETIC NAVY  
Color/Org: 4506 / IND  
Graphic: TLJ



**ROCKIES**  
REGAL PURPLE  
Color/Org: 4505 / DNV  
Graphic: TLJ



**TIGERS**  
ATHLETIC NAVY  
Color/Org: 4506 / DG  
Graphic: TLJ



**ASTROS**  
DARK ORANGE  
Color/Org: 3253 / HUS  
Graphic: TLJ



**ROYALS**  
COASTAL BLUE  
Color/Org: 1882 / ROY  
Graphic: TLJ



**ANGELS**  
ATHLETIC RED  
Color/Org: 0484 / ANG  
Graphic: TLJ



**DODGERS**  
DEEP ROYAL  
Color/Org: 1746 / LD  
Graphic: TLJ



**MARLINS**  
BLACK  
Color/Org: 127A / MSR  
Graphic: TLJ



**BREWERS**  
VEGAS GOLD  
Color/Org: 3446 / MBW  
Graphic: TLJ



**TWINS**  
ATHLETIC NAVY  
Color/Org: 4506 / TWI  
Graphic: TLJ



**METS**  
DARK ORANGE  
Color/Org: 3253 / NME  
Graphic: TLJ



**YANKEES**  
ATHLETIC NAVY,  
BLAZING YELLOW  
Color/Org: 4506, 408C / NK  
Graphic: TLJ / TLR



**ATHLETICS**  
DARK GREEN  
Color/Org: 0565 / FZ  
Graphic: TLJ



**PHILLIES**  
ATHLETIC RED  
Color/Org: 0484 / PP  
Graphic: TLJ



**PIRATES**  
YELLOWGOLD  
Color/Org: 0599 / PBI  
Graphic: TLJ



**PADRES**  
CLASSIC BROWN  
Color/Org: 4034 / PXD  
Graphic: TLJ



**GIANTS**  
BLACK  
Color/Org: 127A / GTI  
Graphic: TLJ



**MARINERS**  
ATHLETIC NAVY  
Color/Org: 4506 / MVR  
Graphic: TLJ



**CARDINALS**  
ATHLETIC RED  
Color/Org: 0484 / SCN  
Graphic: TLJ



**RAYS**  
COASTAL BLUE  
Color/Org: 1882 / RAY  
Graphic: TLJ



**RANGERS**  
DEEP ROYAL  
Color/Org: 1746 / TRA  
Graphic: TLJ

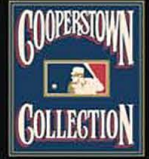


**BLUE JAYS**  
DEEP ROYAL  
Color/Org: 1746 / TOR  
Graphic: TLJ



**NATIONALS**  
ATHLETIC RED  
Color/Org: 0484 / WTL  
Graphic: TLJ

# **NEW COOPERSTOWN EVOLUTION TEE G223 // GY23**



63) G223 (Adult) sizes S-3XL  
64) GY23 (Youth) sizes S-XL

MSRP  
\$25 (Adult) / \$23 (Youth)

- Lightweight synthetic tee
- Wicking fabric
- Short sleeve crew neck synthetic tee, developed with super lightweight polyester, allowing for maximum breathability and moisture management

\* AVAILABLE 8/15/16







PRODUCT NAME

STYLE NO.



DIAMONDBACKS  
REGAL PURPLE  
Color/Org: 4505 / DIA  
Graphic: TLM



BRAVES  
DEEP ROYAL  
Color/Org: 1746 / ATB  
Graphic: TLM



RED SOX  
ATHLETIC RED  
Color/Org: 0484 / BR5  
Graphic: TLM



WHITE SOX  
WHITE  
Color/Org: 0042 / CWS  
Graphic: TLM



ASTROS  
DARK ORANGE  
Color/Org: 3253 / HST  
Graphic: TLM



ANGELS  
ATHLETIC NAVY  
Color/Org: 4506 / C71  
Graphic: TLM



BREWERS  
DEEP ROYAL  
Color/Org: 1746 / MIB  
Graphic: TLM



EXPOS  
COASTAL BLUE  
Color/Org: 1882 / MEX  
Graphic: TLM



METS  
KELLY GREEN  
Color/Org: 1314 / NMT  
Graphic: TLM



YANKEES  
ATHLETIC NAVY  
Color/Org: 4506 / NYY  
Graphic: TLM



PHILLIES  
MAROON  
Color/Org: 0826 / PHP  
Graphic: TLM



PIRATES  
BLACK  
Color/Org: 127A / PBB  
Graphic: TLM



PADRES  
YELLOW GOLD  
Color/Org: 0599 / SDP  
Graphic: TLM



GIANTS  
DARK ORANGE  
Color/Org: 3253 / SFG  
Graphic: TLM



CARDINALS  
COASTAL BLUE  
Color/Org: 1882 / S67  
Graphic: TLM

# MLB® CREWNECK JERSEY TEE 1922 // 1928



65) 1922 (Adult) sizes S-3XL  
66) 1928 (Youth) sizes S-XL

MSRP  
\$17 (Adult) / \$16 (Youth)

- 100% Cotton crewneck jersey
- Official team colors and logos

\*NEW TEAM WORDMARKS AVAILABLE 8/15/16



PRODUCT NAME

STYLE NO.



DIAMONDBACKS  
STEEL HEATHER  
Color/Org: 01 03 / DKS  
Graphic: M2R  
**NEW**



BRAVES  
ATHLETIC NAVY  
Color/Org: 4506 / AW  
Graphic: M2R



ORIOLES  
DARK ORANGE  
Color/Org: 3253 / BLI  
Graphic: M2R



RED SOX  
KELLY GREEN  
Color/Org: 1314 / BQ  
Graphic: M2R



RED SOX  
ATHLETIC NAVY  
Color/Org: 4506 / BQ  
Graphic: M2R



CUBS  
DEEP ROYAL  
Color/Org: 1746 / EJ  
Graphic: M2R



WHITE SOX  
BLACK  
Color/Org: 127A / RX  
Graphic: M2R



REDS  
ATHLETIC RED  
Color/Org: 0484 / RED  
Graphic: M2R



INDIANS  
ATHLETIC NAVY  
Color/Org: 4506 / IND  
Graphic: M2R



ROCKIES  
BLACK  
Color/Org: 127A / DNV  
Graphic: M2R



TIGERS  
ATHLETIC NAVY  
Color/Org: 4506 / DG  
Graphic: M2R



ASTROS  
ATHLETIC NAVY  
Color/Org: 4506 / HUS  
Graphic: M2R



ROYALS  
COASTAL BLUE  
Color/Org: 1882 / ROY  
Graphic: M2R



ROYALS  
DEEP ROYAL  
Color/Org: 1746 / ROY  
Graphic: M2R



ANGELS  
ATHLETIC RED  
Color/Org: 0484 / ANG  
Graphic: M2R



DODGERS  
DEEP ROYAL  
Color/Org: 1746 / LD  
Graphic: M2R



MARLINS  
BLACK  
Color/Org: 127A / MSR  
Graphic: M2R



BREWERS  
ATHLETIC NAVY  
Color/Org: 4506 / MBW  
Graphic: M2R



TWINS  
ATHLETIC NAVY  
Color/Org: 4506 / TWI  
Graphic: M2R



METS  
DARK ORANGE  
Color/Org: 3253 / NME  
Graphic: M2R

PRODUCT NAME

STYLE NO.



YANKEES  
ATHLETIC NAVY  
Color/Org: 4506 / NK  
Graphic: M2R



ATHLETICS  
YELLOW GOLD  
Color/Org: 0599 / FZ  
Graphic: M2R  
**NEW**



PHILLIES  
ATHLETIC RED  
Color/Org: 0484 / PP  
Graphic: M2R



PIRATES  
YELLOW GOLD  
Color/Org: 0599 / PBI  
Graphic: M2R



PIRATES  
BLACK  
Color/Org: 127A / PBI  
Graphic: M2R



PADRES  
ATHLETIC NAVY  
Color/Org: 4506 / PXD  
Graphic: M2R  
**NEW**



GIANTS  
BLACK  
Color/Org: 127A / GTI  
Graphic: M2R



MARINERS  
ATHLETIC NAVY  
Color/Org: 4506 / MVR  
Graphic: M2R  
**NEW**



CARDINALS  
ATHLETIC RED  
Color/Org: 0484 / SCN  
Graphic: M2R



RAYS  
COASTAL BLUE  
Color/Org: 1882 / RAY  
Graphic: M2R



RAYS  
ATHLETIC NAVY  
Color/Org: 4506 / RAY  
Graphic: M2R



RANGERS  
DEEP ROYAL  
Color/Org: 1746 / TRA  
Graphic: M2R



BLUE JAYS  
DEEP ROYAL  
Color/Org: 1746 / TOR  
Graphic: M2R



NATIONALS  
ATHLETIC RED  
Color/Org: 0484 / WTL  
Graphic: M2R



USA BASEBALL  
STEEL HEATHER  
Color/Org: 0103 / UBB  
Graphic: M2R

PRODUCT NAME

STYLE NO.



# MINOR LEAGUE BASEBALL® CREWNECK JERSEY TEE 1922 // 1928



67) 1922 (Adult) sizes S-3XL  
68) 1928 (Youth) sizes S-XL

MSRP  
\$17 (Adult) / \$16 (Youth)

- 100% Cotton crewneck jersey
- Official team colors and logos

\*NEW TEAMS AVAILABLE 8/15/16



PRODUCT NAME

STYLE NO.

**IN STOCK**



**ABERDEEN IRONBIRDS**  
DEEP ROYAL  
Color/Org: 1746 / ABD  
Graphic: M2T



**BATAVIA MUCKDOGS**  
ATHLETIC RED  
Color/Org: 0484 / BMD  
Graphic: M2T



**CAROLINA MUDCATS**  
BLACK  
Color/Org: 127A / CMC  
Graphic: M2T



**CHARLESTON RIVERDOGS**  
ATHLETIC NAVY  
Color/Org: 4506 / RVD  
Graphic: M2T



**CORPUS CHRISTI HOOKS**  
ATHLETIC NAVY  
Color/Org: 4506 / CPH  
Graphic: M2T



**DURHAM BULLS**  
DEEP ROYAL  
Color/Org: 1746 / DHB  
Graphic: M2T



**EUGENE EMERALDS**  
KELLY GREEN  
Color/Org: 1314 / EUG  
Graphic: M2T



**GREENSBORO GRASSHOPPERS**  
DARK ORANGE  
Color/Org: 3253 / GBG  
Graphic: M2T



**LAKE ELSINORE STORM**  
BLACK  
Color/Org: 127A / LKS  
Graphic: M2T



**LANSING LUGNUTS**  
ATHLETIC RED  
Color/Org: 0484 / LUG  
Graphic: M2T



**MAHONING VALLEY SCRAPPERS**  
STEEL HEATHER  
Color/Org: 0103 / MVL  
Graphic: M2T



**MIDLAND ROCKHOUNDS**  
DEEP ROYAL  
Color/Org: 1746 / RKH  
Graphic: M2T



**QUAD CITY RIVER BANDITS**  
BLACK  
Color/Org: 127A / QRB  
Graphic: M2T



**ROCHESTER RED WINGS**  
YELLOW GOLD  
Color/Org: 0599 / RCW  
Graphic: M2T



**TOLEDO MUD HENS**  
ATHLETIC NAVY  
Color/Org: 4506 / TMH  
Graphic: M2T



**TRENTON THUNDER**  
ATHLETIC NAVY  
Color/Org: 4506 / TTH  
Graphic: M2T



**WEST MICHIGAN WHITECAPS**  
COASTAL BLUE  
Color/Org: 1882 / WMC  
Graphic: M2T



**WILMINGTON BLUE ROCKS**  
COASTAL BLUE  
Color/Org: 1882 / WMG  
Graphic: M2T



**BOWLING GREEN HOT RODS**  
DARK ORANGE  
Color/Org: 3253 / BHR  
Graphic: M2T  
**NEW**



**OGDEN RAPTORS**  
ATHLETIC NAVY  
Color/Org: 4506 / OGR  
Graphic: M2T  
**NEW**



**COLUMBIA FIREFLIES**  
ATHLETIC NAVY  
Color/Org: 4506 / CFF  
Graphic: M2T  
**NEW**



**LOUISVILLE BATS**  
ATHLETIC RED  
Color/Org: 0484 / LBT  
Graphic: M2T  
**NEW**

PRODUCT NAME

STYLE NO.

**72 PC MINIMUM**



**BRADENTON MARAUDERS**  
YELLOW GOLD  
Color/Org: 0599 / BMR  
Graphic: M2T



**BURLINGTON BEES**  
ATHLETIC NAVY  
Color/Org: 4506 / BEE  
Graphic: M2T



**CLEARWATER THRESHERS**  
ATHLETIC RED  
Color/Org: 0484 / CTH  
Graphic: M2T



**DAYTON DRAGONS**  
BLACK  
Color/Org: 127 A / DRA  
Graphic: M2T



**OMAHA STORM CHASERS**  
DEEP ROYAL  
Color/Org: 1746 / OMC  
Graphic: M2T



**LAKEWOOD BLUECLAWS**  
ATHLETIC NAVY  
Color/Org: 4506 / LWC  
Graphic: M2T



**OREM OWLZ**  
ATHLETIC RED  
Color/Org: 0484 / OOW  
Graphic: M2T



**PENSACOLA BLUE WAHOOS**  
ATHLETIC NAVY  
Color/Org: 4506 / PBW  
Graphic: M2T



**PORTLAND SEA DOGS**  
ATHLETIC RED  
Color/Org: 0484 / PSD  
Graphic: M2T



**READING FIGHTIN' PHILS**  
ATHLETIC NAVY  
Color/Org: 4506 / RFP  
Graphic: M2T



**ROUND ROCK EXPRESS**  
DEEP ROYAL  
Color/Org: 1746 / RRX  
Graphic: M2T



**SALEM VOLCANOES**  
BLACK  
Color/Org: 127A / SVO  
Graphic: M2T



**EL PASO CHIHUAHUAS**  
ATHLETIC RED  
Color/Org: 0484 / CHU  
Graphic: M2T

**LIMITED AVAILABILITY**



**AKRON RUBBERDUCKS**  
SPORT BLUE  
Color/Org: 1734 / RBD  
Graphic: M2T



**CHARLOTTE KNIGHTS**  
HARVEST GOLD  
Color/Org: 0231 / KNH  
Graphic: M2T



**FORT WAYNE TINCAPS**  
DARK GREEN  
Color/Org: 0565 / TIN  
Graphic: M2T



**LEHIGH VALLEY IRONPIGS**  
BRIGHT CARDINAL  
Color/Org: 8415 / LHP  
Graphic: M2T



**MODESTO NUTS**  
BRIGHT GARNET  
Color/Org: 0514 / MNU  
Graphic: M2T



**SACRAMENTO RIVER CATS**  
BRIGHT GARNET  
Color/Org: 0514 / RVC  
Graphic: M2T



**VERMONT LAKE MONSTERS**  
WHITE  
Color/Org: 0042 / VTL  
Graphic: M2T



**WISCONSIN TIMBER RATTLETS**  
MAROON  
Color/Org: 0826 / TMR  
Graphic: M2T

NJ State Approved Co-op #65MCECCPS

Metuchen/Garden State Apparel

Bid Term: 5/9/18 - 5/8/20



## LEAGUE PROGRAM

Your league can have the same MLB® or MiLB® logo across multiple colors. Please contact your local sales rep. for more information on this program.



NJ State Approved Co-op #65MCECCPS

Metuchen/Garden State Apparel

Bid Term: 5/9/18 - 5/8/20

# MLB® NON-ROYALTY TEE

## 1922 // 1928

69) 1922 (Adult) sizes S-3XL  
70) 1928 (Youth) sizes S-XL

MSRP  
\$16 (Adult) / \$15 (Youth)

- 100% Cotton crewneck jersey
- Official team colors and logos



PRODUCT NAME

STYLE NO.



DIAMONDBACKS  
STEEL HEATHER  
Color/Org: 0103 / DKS  
Graphic: MGN



BRAVES  
ATHLETIC NAVY  
Color/Org: 4506 / AW  
Graphic: MGN



ORIOLES  
DARK ORANGE  
Color/Org: 3253 / BLI  
Graphic: MGN



RED SOX  
ATHLETIC NAVY  
Color/Org: 4506 / BQ  
Graphic: MGN



CUBS  
DEEP ROYAL  
Color/Org: 1746 / EJ  
Graphic: MGN



WHITE SOX  
BLACK  
Color/Org: 127A / RX  
Graphic: MGN



REDS  
ATHLETIC RED  
Color/Org: 0484 / RED  
Graphic: MGN



INDIANS  
ATHLETIC NAVY  
Color/Org: 4506 / IND  
Graphic: MGN



ROCKIES  
BLACK  
Color/Org: 127A / DNV  
Graphic: MGN



TIGERS  
ATHLETIC NAVY  
Color/Org: 4506 / DG  
Graphic: MGN



ASTROS  
ATHLETIC NAVY  
Color/Org: 4506 / HUS  
Graphic: MGN



ROYALS  
DEEP ROYAL  
Color/Org: 1746 / ROY  
Graphic: MGN



ANGELS  
ATHLETIC RED  
Color/Org: 0484 / ANG  
Graphic: MGN



DODGERS  
DEEP ROYAL  
Color/Org: 1746 / LD  
Graphic: MGN



MARLINS  
BLACK  
Color/Org: 127A / MSR  
Graphic: MGN



BREWERS  
ATHLETIC NAVY  
Color/Org: 4506 / MBW  
Graphic: MGN



TWINS  
ATHLETIC NAVY  
Color/Org: 4506 / TWI  
Graphic: MGN



METS  
DARK ORANGE  
Color/Org: 3253 / NME  
Graphic: MGN



YANKEES  
ATHLETIC NAVY  
Color/Org: 4506 / NK  
Graphic: MGN



ATHLETICS  
YELLOW GOLD  
Color/Org: 0599 / FZ  
Graphic: MGN



PHILLIES  
ATHLETIC RED  
Color/Org: 0484 / PP  
Graphic: MGN



PIRATES  
BLACK  
Color/Org: 127A / PBI  
Graphic: MGN



PADRES  
ATHLETIC NAVY  
Color/Org: 4506 / PXD  
Graphic: MGN



GIANTS  
BLACK  
Color/Org: 127A / GTI  
Graphic: MGN



MARINERS  
ATHLETIC NAVY  
Color/Org: 4506 / EV  
Graphic: MGN



CARDINALS  
ATHLETIC RED  
Color/Org: 0484 / SCN  
Graphic: MGN



RAYS  
ATHLETIC NAVY  
Color/Org: 4506 / RAY  
Graphic: MGN



RANGERS  
DEEP ROYAL  
Color/Org: 1746 / TRA  
Graphic: MGN



BLUE JAYS  
DEEP ROYAL  
Color/Org: 1746 / TOR  
Graphic: MGN



NATIONALS  
ATHLETIC RED  
Color/Org: 0484 / WTL  
Graphic: MGN



# our **CUSTOMIZED DECORATION OPTIONS.**

Every team is unique, and every uniform should be too. Every team wants to look good on the field, because when you look good, you feel good, and when you feel good, you play good. The next few pages will allow you to create your custom look and feel. You'll choose from various colors of braid to make your uniform pop. You'll select from different fonts to design the front of the jersey to show your team's name or nickname, as well as the back name and numbers. You'll also design your fleece and outerwear, and your coaches polos as well, customized for your team or organization. When you are ready to place a custom order or if you have any questions please contact your local Team Majestic sales rep.



Majestic  
ALWAYS GAME.

**Majestic**  
TEAM COLLECTION



01. G223-1882-MAJ-XXX  
COASTAL BLUE



02. I383-M025-MAJ-XXX  
PRO ATH DARK GREEN-  
PRO WHITE



03. GA73-966G-MLB-XX  
TEAM WHITE



04. 6840-M099-MAJ-XXX  
PRO WHITE



05. 6840-965G-MAJ-XXX  
TEAM GOLD



06. G008-410K-MAJ-XXX  
TEAM SCARLET-TEAM  
WHITE-TEAM SCARLET



07. IA03-M104-MAJ-XXX  
PRO WHITE-PRO BLACK



08. G078-812L-MLB-XXX  
TEAM BRIGHT ROYAL-  
ROYAL RUGGED  
HEATHER



09. I786-230J-MLB-XXX  
TEAM PURPLE-TEAM WHITE



10. I394-962G-MAJ-XXX  
TEAM ORANGE



11. I328-882J-MLB-XXX  
TEAM BLACK-  
TEAM BASE GRAY



12. I329-996G-MAJ-XXX  
TEAM BRIGHT ROYAL-  
PRO GRANITE



13. IA04-5187-MAJ-XXX  
GRANITE/BLACK



14. IJ18-883J-MLB-XXX  
TEAM BRIGHT ROYAL-  
TEAM BASE GRAY



15. 1JC1-M071-MLB-XXX  
PRO NAVY-PRO SILVER



16. GJ27-672L-MLB-XXX  
TEAM BRIGHT ROYAL-  
PRO GRANITE

**START HERE**

If you've selected a jersey or pants that can get custom braid, you'll start here.

Choose your jersey, pants, the braid location and colors that you want to accent.

You'll then move on to your front and back decoration on subsequent pages.  
The available braid locations are highlighted in green on each silhouette below.

\*Please note on full button front jerseys you can combine "Sleeve Hems" along with either "Neckline" or "Neck & Front" locations.

\*\*You cannot combine "Neckline" with "Neck and Front".

If you've selected an item that does not get custom braid, please proceed to the pages that allow you to select the decoration specific to your item.

**JERSEY OPTIONS**



Option A



Option B



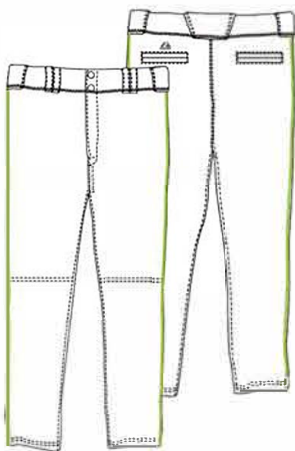
Option C



Option C

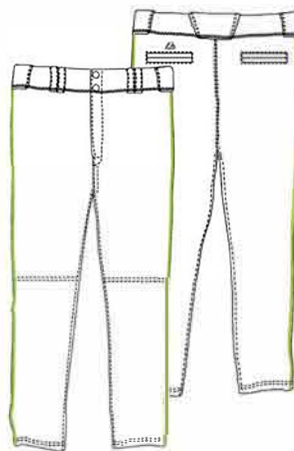
MSRP Pricing per Unit and Location			
Braid	Option "A" Neckline	Option "B" Neck & Front	Option "C" Sleeve Hems
6+ pieces	\$10.00	\$10.00	\$10.00
1-5 pieces	\$14.00	\$14.00	\$14.00

**PANT OPTIONS**



Flex Base™ & Cool Base HD™ Pant

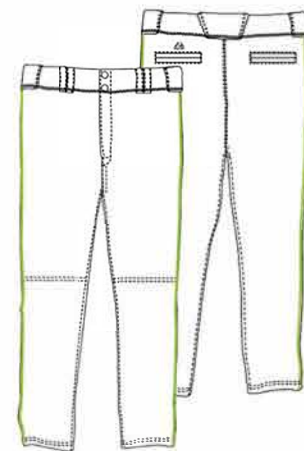
MSRP Pricing per Unit and Location	
Leg Braid	Side of Legs
6+ pieces	\$15.00
1-5 pieces	\$20.00



Cool Base HD™ Custom Inseam Pant

Adult Custom Inseam Length: 24" - 37"  
Youth Custom Inseam Length: 23" - 32"

MSRP Pricing per Unit and Location	
Leg Braid	Side of Legs
6+ pieces	\$15.00



Flex Base™ Custom Inseam Pant

Adult Custom Inseam Length: 24" - 37"  
Youth Custom Inseam Length: 23" - 32"

MSRP Pricing per Unit and Location	
Custom Inseam	Open or banded bottom
1+	\$10.00

3/8" SOLID BRAID



3/8" DOUBLE BRAID



3/8" TRIPLE BRAID



3/16" SOLID BRAID









*our* **FONT PACKAGES.**

Choosing the right font makes or breaks the entire uniform. We provide you font options that are professional, and synonymous with baseball. Whether you want a traditional look, or something fresh and new, we've got a combination that will make your team look great!

LEVEL 1 FONT NAME	FONT LAYOUTS					
	STRAIGHT	ARCH	VERTICAL ARCH	BRIDGE	LEFT CHEST	BACK
MAJESTIC BLOCK	<b>MAJESTIC</b>	<b>MAJESTIC</b>	<b>MAJESTIC</b>	<b>MAJESTIC</b>	<b>LV</b>	<b>PLAYER 14</b>
MACHINE BLOCK	<b>MAJESTIC</b>	<b>MAJESTIC</b>	<b>MAJESTIC</b>	<b>MAJESTIC</b>	<b>LV</b>	<b>PLAYER 14</b>
FULL BLOCK	<b>MAJESTIC</b>	<b>MAJESTIC</b>	<b>MAJESTIC</b>	<b>MAJESTIC</b>	<b>LV</b>	<b>PLAYER 14</b>
THE EDGE	<b>MAJESTIC</b>	N/A	N/A	N/A	<b>LV</b>	<b>PLAYER 14</b>
CITY	<b>MAJESTIC</b>	<b>MAJESTIC</b>	<b>MAJESTIC</b>	<b>MAJESTIC</b>	<b>LV</b>	<b>PLAYER 14</b>
NEW ATHLETIC	<b>MAJESTIC</b>	<b>MAJESTIC</b>	<b>MAJESTIC</b>	<b>MAJESTIC</b>	<b>LV</b>	<b>PLAYER 14</b>
ATHLETIC SLANT	<b>MAJESTIC</b>	N/A	N/A	N/A	<b>LV</b>	<b>PLAYER 14</b>

Twill MSRP Prices per Unit							
6+ pieces	Level 1 Twill	Front Wordmark	Left Chest, Right Chest, Left Sleeve, Right Sleeve	Front Number	Back Name	Back Number	Back Name and Number
	1 color	\$30.00	\$12.00	\$12.00	\$10.00	\$17.50	\$27.50
	2 color	\$40.00	\$15.00	\$15.00	\$15.00	\$20.00	\$35.00
	3 color	\$50.00	\$25.00	\$25.00	\$30.00	\$27.50	\$57.50
1-5 pieces	Level 1 Twill	Front Wordmark	Left Chest, Right Chest, Left Sleeve, Right Sleeve	Front Number	Back Name	Back Number	Back Name and Number
	1 color	\$40.00	\$20.00	\$20.00	\$15.00	\$22.50	\$37.50
	2 color	\$50.00	\$25.00	\$25.00	\$20.00	\$25.00	\$45.00
	3 color	\$60.00	\$30.00	\$30.00	\$35.00	\$35.00	\$70.00

LEVEL 2 FONT NAME	FONT LAYOUTS					
	STRAIGHT	ARCH	VERTICAL ARCH	BRIDGE	LEFT CHEST	BACK
TIFFANY	<b>MAJESTIC</b>	<b>MAJESTIC</b>	<b>MAJESTIC</b>	<b>MAJESTIC</b>	<b>LV</b>	<b>PLAYER 14</b>
ATHLETIC STEEL	<b>MAJESTIC</b>	<b>MAJESTIC</b>	<b>MAJESTIC</b>	<b>MAJESTIC</b>	<b>LV</b>	<b>PLAYER 14</b>
TEAM PRIDE	<b>MAJESTIC</b>	<b>MAJESTIC</b>	<b>MAJESTIC</b>	<b>MAJESTIC</b>	<b>LV</b>	<b>PLAYER 14</b>
<i>Traditional Script</i>	<i>Majestic</i>	<i>Majestic</i> <small>ANGLED SCRIPT W/ TAIL</small>	<i>Majestic</i> <small>STRAIGHT SCRIPT W/ TAIL</small>	N/A	<i>LV</i>	N/A
<i>Modern Script</i>	<i>Majestic</i>	<i>Majestic</i> <small>ANGLED SCRIPT W/ TAIL</small>	<i>Majestic</i> <small>STRAIGHT SCRIPT W/ TAIL</small>	N/A	<i>LV</i>	N/A
<i>Majestic Script</i>	<i>Majestic</i>	<i>Majestic</i> <small>ANGLED SCRIPT W/ TAIL</small>	<i>Majestic</i> <small>STRAIGHT SCRIPT W/ TAIL</small>	N/A	<i>LV</i>	N/A
<i>Loeber Script</i>	<i>Majestic</i>	N/A	<i>Majestic</i> <small>STRAIGHT SCRIPT W/ TAIL</small>	N/A	<i>LV</i>	N/A

Twill MSRP Prices per Unit							
6+ pieces	Level 2 Twill	Front Wordmark	Left Chest, Right Chest, Left Sleeve, Right Sleeve	Front Number	Back Name	Back Number	Back Name and Number
	1 color	\$40.00	\$12.00	\$12.00	\$12.50	\$20.00	\$32.50
	2 color	\$40.00	\$15.00	\$15.00	\$17.50	\$25.00	\$42.50
	3 color	\$60.00	\$27.50	\$25.00	\$35.00	\$30.00	\$65.00
1-5 pieces	Level 2 Twill	Front Wordmark	Left Chest, Right Chest, Left Sleeve, Right Sleeve	Front Number	Back Name	Back Number	Back Name and Number
	1 color	\$50.00	\$20.00	\$20.00	\$17.50	\$30.00	\$47.50
	2 color	\$50.00	\$25.00	\$25.00	\$22.50	\$35.00	\$57.50
	3 color	\$70.00	\$32.50	\$32.50	\$40.00	\$45.00	\$85.00

**LEVEL 1**  
FONT NAME

FONT NAME

**MAJESTIC BLOCK**

STRAIGHT MAJESTIC ARCH MAJESTIC VERTICAL ARCH MAJESTIC BRIDGE MAJESTIC LEFT CHEST **Lv**

**ABCDEFGHIJKLM  
NOPQRSTUVWXYZ  
1234567890**

**FULL BLOCK**

STRAIGHT MAJESTIC ARCH MAJESTIC VERTICAL ARCH MAJESTIC BRIDGE MAJESTIC LEFT CHEST **Lv**

**ABCDEFGHIJKLM  
NOPQRSTUVWXYZ  
1234567890**

**CITY**

STRAIGHT MAJESTIC ARCH MAJESTIC VERTICAL ARCH MAJESTIC BRIDGE MAJESTIC LEFT CHEST **Lv**

**ABCDEFGHIJKLM  
NOPQRSTUVWXYZ  
1234567890**

**ATHLETIC SLANT**

STRAIGHT MAJESTIC LEFT CHEST **Lv**

**ABCDEFGHIJKLM  
NOPQRSTUVWXYZ  
1234567890**

**MACHINE BLOCK**

STRAIGHT MAJESTIC ARCH MAJESTIC VERTICAL ARCH MAJESTIC BRIDGE MAJESTIC LEFT CHEST **Lv**

**ABCDEFGHIJKLM  
NOPQRSTUVWXYZ  
1234567890**

**THE EDGE**

STRAIGHT MAJESTIC LEFT CHEST **Lv**

**ABCDEFGHIJKLM  
NOPQRSTUVWXYZ  
1234567890**

**NEW ATHLETIC**

STRAIGHT MAJESTIC ARCH MAJESTIC VERTICAL ARCH MAJESTIC BRIDGE MAJESTIC LEFT CHEST **Lv**

**ABCDEFGHIJKLMN  
NOPQRSTUVWXYZ  
1234567890**

LEVEL 2  
FONT NAME

FONT NAME

TIFFANY

STRAIGHT MAJESTIC ANGLE MAJESTIC VERTICAL ASPEN MAJESTIC LEFT CHEST L<sub>v</sub>

ABCDEFGHIJKLM  
 NOPQRSTUVWXYZ  
 1234567890

ATHLETIC STEEL

STRAIGHT MAJESTIC ANGLE MAJESTIC VERTICAL ASPEN MAJESTIC LEFT CHEST L<sub>v</sub>

ABCDEFGHIJKLM  
 NOPQRSTUVWXYZ  
 1234568790

TEAM PRIDE

STRAIGHT MAJESTIC ANGLE MAJESTIC VERTICAL ASPEN MAJESTIC LEFT CHEST L<sub>v</sub>

ABCDEFGHIJKLM  
 NOPQRSTUVWXYZ  
 1234567890

Traditional Script

STRAIGHT MAJESTIC ANGLE MAJESTIC VERTICAL ASPEN MAJESTIC LEFT CHEST L<sub>v</sub>

ABCDEFGHIJKLM  
 NOPQRSTUVWXYZ  
 abcdefghijklm  
 nopqrstuvwxyz

Modern Script

STRAIGHT MAJESTIC ANGLE MAJESTIC VERTICAL ASPEN MAJESTIC LEFT CHEST L<sub>v</sub>

ABCDEFGHIJKLM  
 NOPQRSTUVWXYZ  
 abcdefghijklm  
 nopqrstuvwxyz

Lobster Script (FRONT ONLY)

STRAIGHT MAJESTIC ANGLE MAJESTIC VERTICAL ASPEN MAJESTIC LEFT CHEST L<sub>v</sub>

ABCDEFGHIJKLM  
 NOPQRSTUVWXYZ  
 abcdefghijklm  
 nopqrstuvwxyz

Majestic Script (FRONT ONLY)

STRAIGHT MAJESTIC ANGLE MAJESTIC VERTICAL ASPEN MAJESTIC LEFT CHEST L<sub>v</sub>

ABCDEFGHIJKLM  
 NOPQRSTUVWXYZ  
 abcdefghijklm  
 nopqrstuvwxyz

TWILL DECORATION LAYERS



**TWILL LAYER POSITIONING**  
 COLOR: TOP LAYER // BOTTOM LAYER

STOCK VINYL DECORATION LAYERS



MULTI-COLOR VINYL: T2216 // T1827  
 \*Please note, any of the colors shown for vinyl can be combined to be executed as multi color decoration.

Vinyl MSRP Prices per Unit					
1 Color Vinyl	Front Wordmark	Front Wordmark + Number Front	Back Name	Back Number	Sleeve Logo
1 Color	\$8.00	\$8.00	\$2.00	\$5.00	\$6.00
Multi-color Vinyl	\$15.00	\$15.00	\$3.00	\$10.00	\$13.00



*our* **STYLES,**  
**YOUR WAY.**

On the following page, you'll find layouts of embroidery, vinyl print, or twill options for your polos, fleece and even jerseys or spiritwear. With multiple layout versions, and using our full font package, there are thousands of combinations to choose from to make your items your own.

	OPTION 1	OPTION 2
A) LOGO OR NUMBER LOCKUP		
B) LOGO WITH STRAIGHT TYPE		
C) ARCHED TEAM NAME WITH STRAIGHT TYPE		N/A
D) STRAIGHT TYPE WITH LOGO/NUMBER		
E) ARCHED NAME WITH LOGO/NUMBER		
F) ARCHED TEAM NAME WITH LOGO/NUMBER, STRAIGHT TYPE		

**PANTONE® THREAD COLORS**

METALLIC GOLD 872C	METALLIC SILVER 877C	GRAPHITE COOL GRAY 11	KING GRAY COOL GRAY 9	LIME GREEN 7488
WHITE 9061C	BLACK BLACK 6	DARK BROWN 476C	TEAK 440C	NEON YELLOW 395C
NUGGET GOLD 7562C	VEGAS GOLD 7556	GOLD DUST 7500	OAKLAND GOLD 1235C	CAPRI 319C
LIGHT GOLD 123C	METROORANGE 1655C	FIRE RED WARM RED C	MARINERGREEN 7719C	
MARINER BLUE 7716C	DARK GREEN 357C	KELLY 348C	PURPLE 274C	
NAVY 289C	PROCESS BLUE 2995C	ROYAL 288C	COLUMBIA BLUE 284C	
SCARLET 200C	MAROON 209C	CARDINAL 195C	GREEK PINK 219C	

Additional Options / MSRP Prices per Unit		
Patch provided by customer	Sewn Down	\$5.00
Nameplate	Loose	\$6.00
Nameplate	1 color twill	\$21.00
Nameplate	2 color twill	\$26.00

EMBROIDERY	
Direct Embroidery 10K stitches	Digitizing fee for all new custom artwork
Embroidery	\$100.00

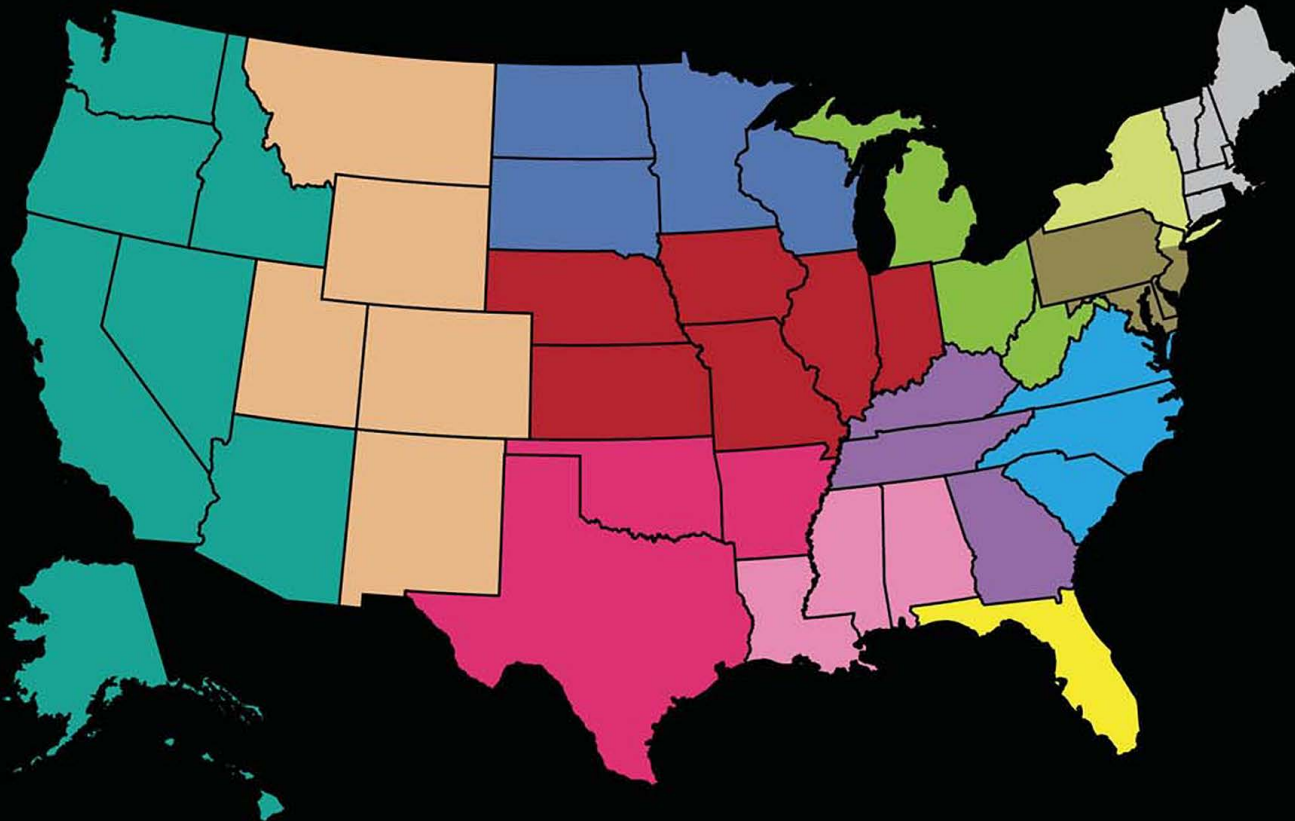
MSRP Pricing per Unit and Location	
6 + pieces	\$10.00
1-5 pieces	\$14.00





INDEX BY STYLE NAME	
STYLE NAME	Page #
Authentic Collection Cool Base® Umpire Polo	23
Authentic Collection Practice Pullover	17
Authentic Collection Premier Jacket	12
Authentic Collection Tech Fleece	16
Authentic Collection Therma Base™ 3-N-1 Triple Climate Jacket	13
Authentic Collection Therma Base™ Double Climate Jacket	13
Authentic Collection Therma Base™ Hooded Fleece	17
Authentic Collection Training Jacket	14
Coaches Polo	22
Cool Base® 2-Button Colorblocked Jersey	6
Cool Base® Convertible Triple Peak Gamer Jacket	15
Cool Base HD™ Baseball Pant	9
Cool Base HD™ Baseball Pant w/Custom Inseam	10
Cool Base HD™ Braided Jersey	7
Cool Base HD™ Jersey	7
Cool Base HD™ Piped Baseball Pant	9
Cool Base HD™ Throwback Pant	10
Cool Base® Premier Relaxed Fit Braided Pant	11
Cool Base® Premier Relaxed Fit Pant	11
Cool Base® Pro Style Game Jersey	6
Cool Base® Umpire Polo	23
Cool Base® V-Neck Jersey	7
Cooperstown® Evolution Tee	32-33
Evolution Tee	8
Flex Base™ Baseball Pant	4-5
Flex Base™ Jersey	4-5
Minor League Baseball Crewneck Jersey Tee	38-40
MLB® Cool Base® Pro Style Game Jersey	24-25
MLB® Cool Base® V-Neck Jersey	26-27
MLB® Crewneck Jersey Tee	34-36
MLB® Evolution Tee	30-31
MLB® Non-Royalty Tee	42-43
MLB® Premier Eagle 2-Button Colorblocked Jersey	28-29
Premier Eagle 2-Button Colorblocked Jersey	8
Premier Home Plate Hooded Tech Fleece	18
Premier Home Plate Tech Fleece	19
Premier Mesh Travel Short	21
Premier Travel Pant	21
Premier Viper Fitted Base Layer	20
Premier Warrior Fitted Base Layer	20

INDEX BY STYLE #	
STYLE #	Page #
1922/1928 MiLB®	38-40
1922/1928 MLB®	34-36
1922/1928 MLB® Non-Royalty	42-43
1JC1/1JCY	15
6040/604Y	7
6840/684Y	6
6840/684Y MLB®	24-25
6940/694Y	7
8940/894Y	9
8950/895Y	9
8960/896Y	10
G008/GY08	7
G008/GY08 MLB®	26-27
G011/GY11	4-5
G013/GY13	10
G078/GY78	16
G223/GY23	8
G223/GY23 Cooperstown®	32-33
G223/GY23 MLB®	30-31
GA73/GY73	4-5
GJ27	12
I328	17
I329/I32Y	18
I341	21
I383/IY83	8
I383/IY83 MLB®	28-29
I386/IY86	20
I387/IY87	20
I390/IY90	11
I394/I39Y	19
I396/IY96	21
I397	13
I398	13
I786/IY60	17
IA03/IY03	6
IA04	22
IB90/IYB9	11
IJ18/IJ8Y	14
UM01	23
UM02	23



**Steve Boyer**  
 Phone: 949-769-6549  
 Cell: 949-636-0729  
 steveboyer@13westllc.com  
 Territory: Southern California & Hawaii

**Bob Mayer**  
 Phone: 650-692-5167  
 Cell: 650-544-4164  
 rmayerca@earthlink.net  
 Territory: Central & Northern California & Northern NV

**Steve Weckerle**  
 Cell: 949-275-0727  
 weckerles@gmail.com  
 Territory: San Diego, San Bernardino & Riverside Co. in CA, Southern NV, AZ

**Dalton Susselman**  
 Phone: 310-486-0419  
 dalton365@outlook.com  
 Territory: Los Angeles & Central Coastal CA

**Zack Boyer**  
 Phone: 949-502-8839  
 Cell: 949-636-2323  
 zackboyer@13west.com  
 Territory: Orange County, CA

**Jerry Collins**  
 Cell: 828-244-7118  
 Phone: 1-800-470-3057  
 jerry@eastmansales.com  
 Territory: CO, UT, NM, WY, MT

**Tom Theis**  
 Phone: 952-431-2177  
 Cell: 612-867-3845  
 tomtheis@frontier.net  
 Territory: SD, ND, MN, WI

**Chris Holland**  
 Cell: 817-797-7277  
 christopherholland@att.net  
 Territory: AR, OK & TX

**Ryan Manley**  
 Phone: 205-613-4375  
 ryan\_manley@yahoo.com  
 Territory: AL, MS, & LA

**Matt Christensen**  
 Phone: 402-932-7948  
 Cell: 402-943-8158  
 matt\_christensen@vfc.com  
 Territory: IN, IL, MO, IA, NE, KS

**Thomas Whillingham**  
 Cell: 404-788-3025  
 thomaswhillingham2@gmail.com  
 Territory: KY, TN & GA

**Brian Metzdorf**  
 Phone: 770-881-7762  
 Cell: 770-375-6790  
 Brian@HMWwithington.com  
 Territory: GA

**David Worst**  
 Cell: 616-437-1106  
 davew@dgtlrsales.com  
 Territory: MI & OH

**Brian Makela**  
 Cell: 513-378-6050  
 brianm@dgtlrsales.com  
 Territory: OH & W. VA, Western PA

**Lary Poole**  
 Phone: 864-299-6550  
 Cell: 864-630-6437  
 brandpoole@aol.com  
 Territory: SC, NC, VA, DC

**Jim Lewis**  
 Cell: 904-524-0171  
 jimlewis161c@yahoo.com  
 Territory: FL

**David Gordon**  
 Phone: 540-955-1996  
 Cell: 540-729-3222  
 david@dgtlrsales.com  
 Territory: DC Metro, MD, DE, PA

**Christian Raniszewski**  
 Phone: 540-955-1996  
 Cell: 610-248-4432  
 christian@dgtlrsales.com  
 Territory: NY/ NY Metro, Long Island, NJ

**Bill McGovern**  
 Phone: 508-943-6564  
 Cell: 508-341-0090  
 Tinman818@charter.net  
 Territory: ME, VT, NH, MA, RI, CT

**Trent Riddle**  
 Phone: 253-209-7292  
 Trent@RiddleSales.com  
 Territory: WA, OR, ID, AK

**CANADA**

**Gary Andersen**  
 Phone: 888-594-9832  
 gary\_andersen@vfc.com  
 Territory: GTA, Maritimes

**Mike Stanford**  
 Phone: 403-720-2345  
 Cell: 403-803-3093  
 mikest@telus.net  
 Territory: BC, Alberta, Saskatchewan, Manitoba

**Jay Hildebrand**  
 Phone: 905-858-1311  
 Cell: 416-399-2050  
 jhildebrand@rogers.com  
 Territory: Ontario (SW Ontario & GTA), Quebec



**SIZE SCALES FOR TOPS**

ADULT SIZES	S	M	L	XL	2XL	3XL
CHEST (Body Measurement)	34-36"	34-36"	42-44"	46-48"	50-52"	54-56"

YOUTH SIZES	S (8)	M (10-12)	L (14-16)	XL (18)
CHEST (Body Measurement)	26 1/2"	28-29 1/2"	31-32 1/2"	34-35 1/2"

**TERMS AND CONDITIONS**

All Majestic garments have washing instructions printed on the label. Generally, these garments are required to be washed by hand or in a washer on a gentle setting. COLD water should be used and the temperature should never exceed 90 degrees Fahrenheit. A mild soap should be used and NO BLEACH or CHLORINATED SOLVENTS should be used. The garment should be rinsed thoroughly in COLD clear water and should be line dried and not placed in a dryer.

All prices charged for goods shipped will be those prices in effect at the time of shipment. If prices change, we will request that an order change or a new purchase order be submitted for remaining open orders. All prices, colors, logos and styles featured in this catalog are subject to change at any time.

All discount programs are based on a timely receipt of payment. If any payment is received after the specified due date or level qualifications are not met, the discounts will not be allowed and the customer will be charged back for all merchandise shipped at the regular non/discounted price

Majestic ships all orders "FOB" Majestic shipping locations. Shipments will generally ship via UPS or FedEx. If a shipment is refused, the customer will be responsible for all Freight charges. Redelivery of refused shipments and all future shipments will require prepaid certified funds. All shipments are subject to normal shipping and handling fees.

This catalog is intended for trade purposes only. Some of the artwork reflected in this catalog may vary to conform to licensing approval requirements. Some artwork may be rejected entirely. Substitutions may be made at the discretion of Majestic Athletic, a division of VF Licensed Sports Group. Fabric is subject to change based on final vendor/country of origin. Country of origin: Imported

The Major League Baseball trademarks and copyrights and the trademarks and copyrights of its member clubs are used with permission of Major League Baseball Properties, Inc. Players Choice is a registered trademark of the Major League Baseball Players Association. Official Licensee of Major League Baseball Players Association.

Intellectual properties of Major League Baseball and all MLB affiliated entities atrade dress and copyrights, including word marks, logos, uniform designs, mascots, images, colors, and color combinations, characters, symbols, designs, likenesses, and visual representations are used with permission

Majestic is a brand and registered trademark of VF Licensed Sports Group and Imagewear Apparel Corp., respectively. www.majesticathletic.com/privacy-legal/Majestic Athletic, ©2015 VF Imagewear, Inc., all rights reserved. VF Licensed Sports Group, a division of VF Imagewear, Inc.

PLEASE NOTE: Occasionally garments may be mis-sized or shipped in the wrong sizes, colors or styles. Please check each garment BEFORE decorating. We will gladly make exchanges on nonprinted garments only.

**PRINTED GARMENTS ARE NOT RETURNABLE**

**NO RETURNS OF MERCHANDISE WILL BE ACCEPTED 30 DAYS AFTER DATE OF DELIVERY. RETURNS OF MERCHANDISE MAY BE SUBJECT TO A RESTOCKING FEE.**

**NO RETURNS OF MERCHANDISE WILL BE ACCEPTED WITHOUT WRITTEN PERMISSION AND OUR AUTHORIZATION STICKER AFFIXED TO PACKAGE.**

USMC Desert MARPAT DigiCamo used under license with the US Marine Corps



**TEAM MAJESTIC COLLECTION**  
©2016



2320 Newlins Mill Road, Easton, PA 18045

4408 West Linebaugh Avenue, Tampa, FL 33624

Customer Service: 800-955-8555