



2017

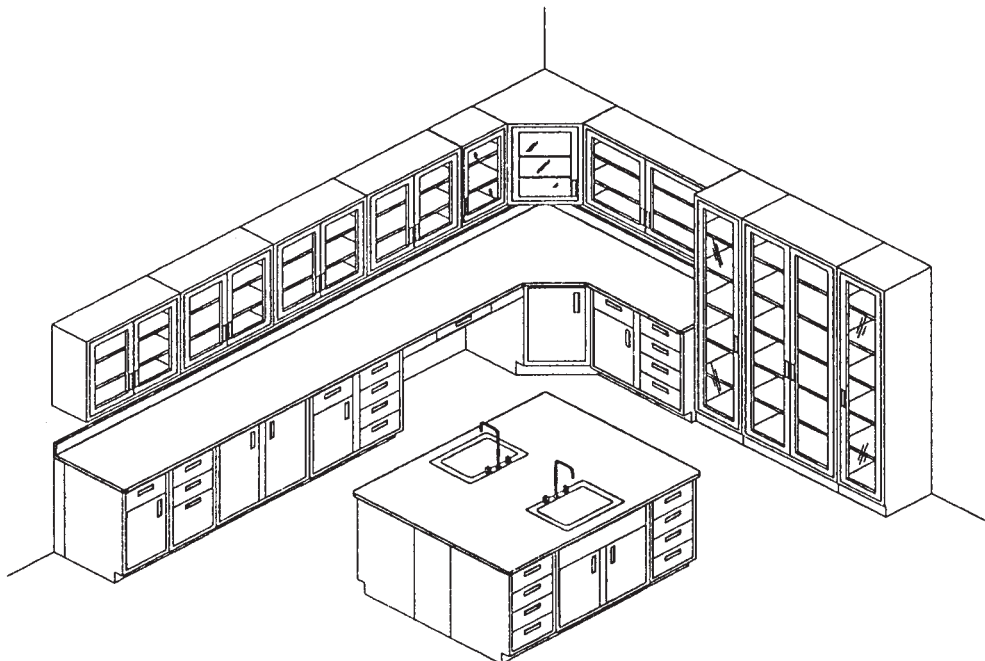
PRODUCT CATALOG

METAL LABORATORY SYSTEMS

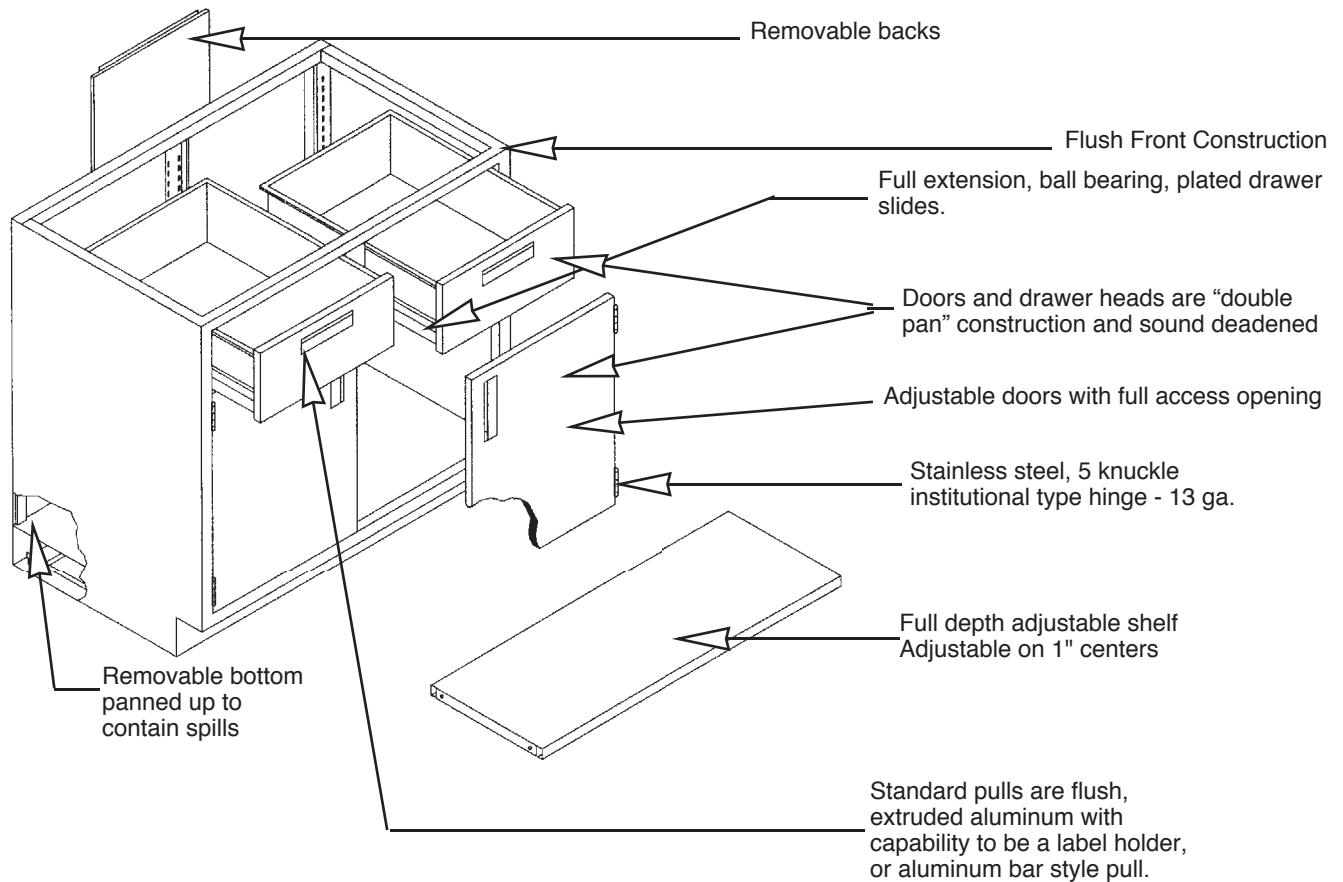


Table of Contents

Specifications -----	1
Base Cabinets - Standing/Counter Height -----	2 - 8
Base Cabinets - Sink/Fume Hood Standing Height -----	9
Base Cabinets - Special Purpose -----	10
Acid Storage Cabinets -----	11
Flammable Storage Cabinets -----	11
Base Cabinets - Sitting/Desk Height -----	12 - 14
Corner Base Cabinets - Sitting/Desk Height -----	15
Corner Sink Cabinets - Sitting/Desk Height -----	15
Wall Case Units -----	16 - 17
Corner Wall Case Units -----	17
Floor Case Units -----	18 - 19
Fume Hoods -----	20-21
Aprons and Drawer Housings -----	22
Utility Tables -----	23
Accessories -----	24-25



Base Cabinets Standing/Counter Height



Additional Specifications

All surfaces shall be painted or zinc plated. The paint is a chemical resistant baked on epoxy powder. Specific test data is available upon request.

Gauges of base cabinet components are as follows:

Aprons	18 ga.	Legs - 2" sq. tube	18 ga.
Back Panels	20 ga.	Shelves	18 ga.
Bottom Panels	18 ga.	Side Panels	18 ga.
Drawer/Door Outer Panel	20 ga.	Table Frames	18 ga.
Door Inner Panel	20 ga.	K & V Shelve Clip	
Drawer Bodies	20 ga.		

For complete specifications, request our full line of products specifications.

Subject to change.

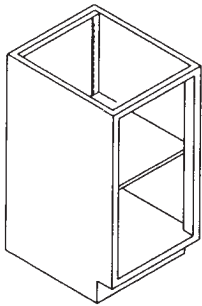
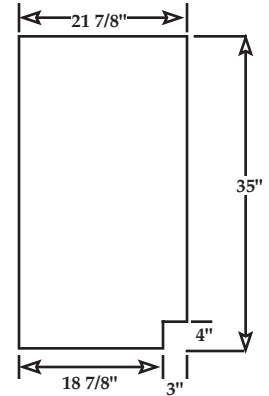
Base Cabinets Standing/Counter Height

Standing/Counter Height 35" High x 22" Deep. Units are available in various widths as shown. Drawer units feature full extension slides. A single shelf is standard in the units shown. Additional shelves are available (see page 11). Specify left or right hand doors. Hand is indicated by side of door upon which hinge is located.

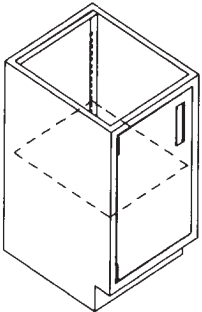
Part Numbering System

Sample: B3536-048 1 = Base unit 4 = #Doors
 12233-456 2 = Height 5 = #Drawers
 3 = Width 6 = #Half Drawers

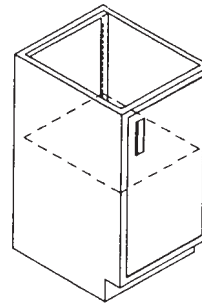
*"F" = File Drawer
 *"S" = Sink Unit
 *"P" = Panel
 *"R" = Right hinge facing cab.
 *"L" = Left hinge facing cab.



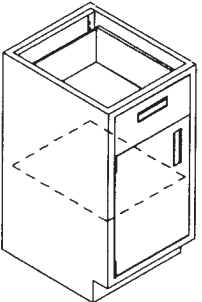
B3515-000
B3518-000
B3524-000



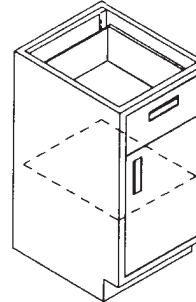
B3515-100(L)
B3518-100(L)
B3524-100(L)



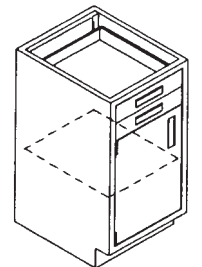
B3515-100(R)
B3518-100(R)
B3524-100(R)



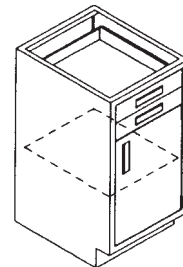
B3515-110(L)
B3518-110(L)
B3524-110(L)



B3515-110(R)
B3518-110(R)
B3524-110(R)



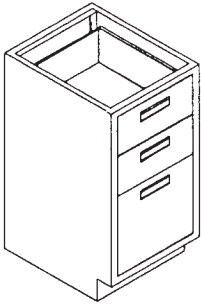
B3515-102(L)
B3518-102(L)
B3524-102(L)



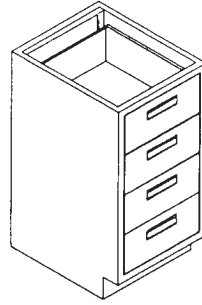
B3515-102(R)
B3518-102(R)
B3524-102(R)

NOTE: When ordering units with configurations that are non-standard, drawings must accompany order.

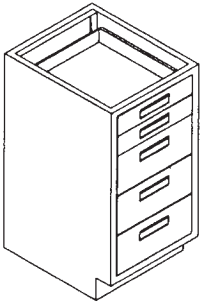
Base Cabinets Standing/Counter Height



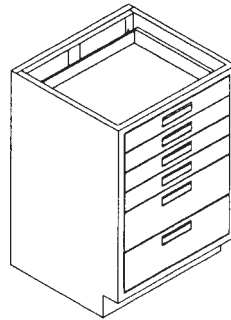
**B3515-F20
B3518-F20
B3524-F20**



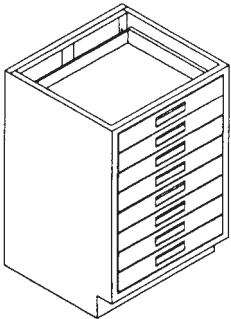
**B3515-040
B3518-040
B3524-040**



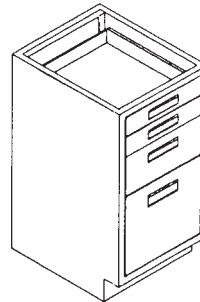
**B3515-032
B3518-032
B3524-032**



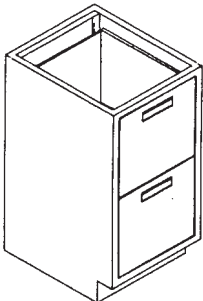
**B3515-024
B3518-024
B3524-024**



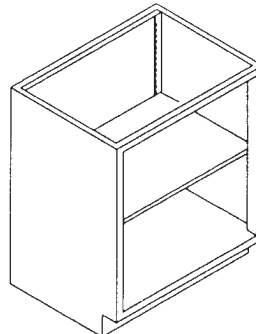
**B3515-008
B3518-008
B3524-008**



**B3515-F12
B3518-F12
B3524-F12**

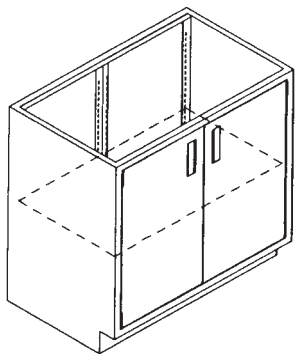


**B3515-FFO
B3518-FFO
B3524-FFO**

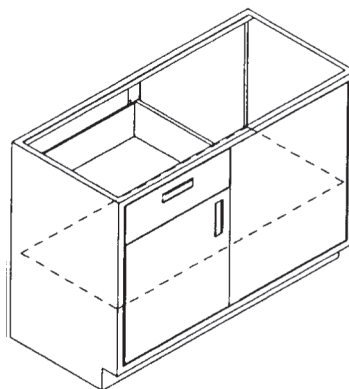


**B3530-000
B3536-000
B3542-000
B3548-000**

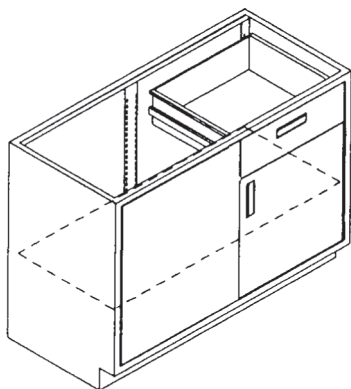
Base Cabinets Standing/Counter Height



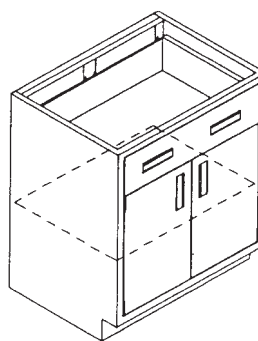
**B3530-200
B3536-200
B3542-200
B3548-200**



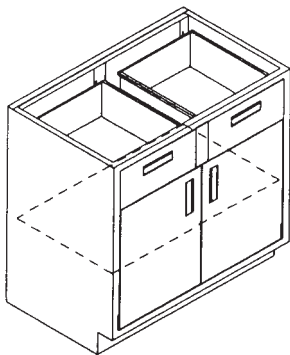
**B3530-110(L)SP
B3536-110(L)SP
B3542-110(L)SP
B3548-110(L)SP**



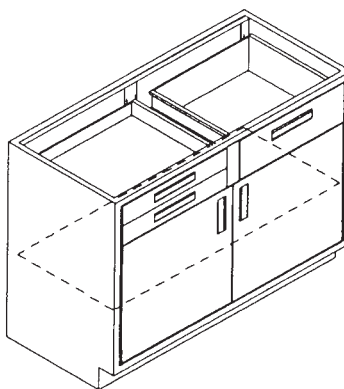
**B3530-110(R)SP
B3536-110(R)SP
B3542-110(R)SP
B3548-110(R)SP**



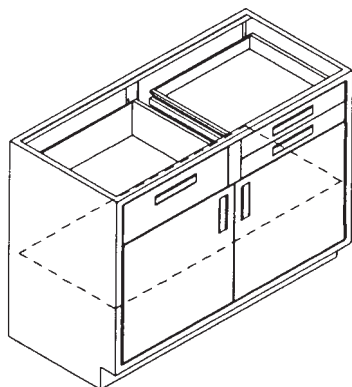
**B3530-210
B3536-210
B3542-210
B3548-210**



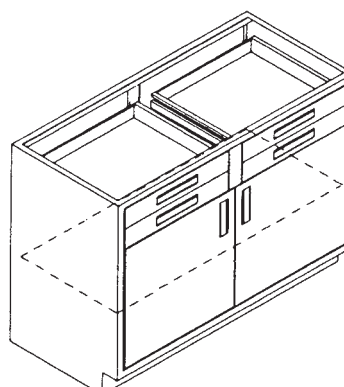
**B3530-220
B3536-220
B3542-220
B3548-220**



**B3530-212A
B3536-212A
B3542-212A
B3548-212A**

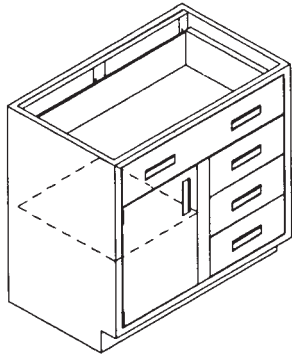


**B3530-212B
B3536-212B
B3542-212B
B3548-212B**

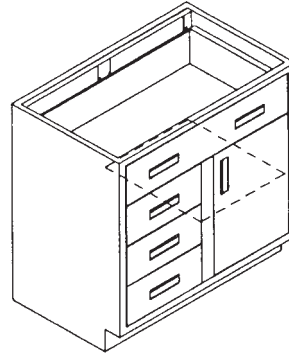


**B3530-204
B3536-204
B3542-204
B3548-204**

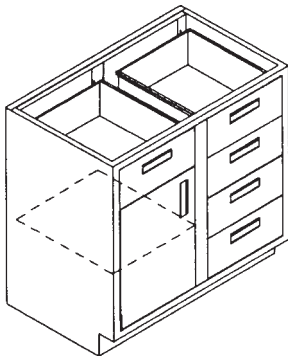
Base Cabinets Standing/Counter Height



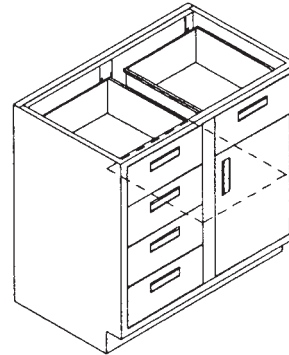
B3530-140B(L)
B3536-140B(L)
B3542-140B(L)
B3548-140B(L)



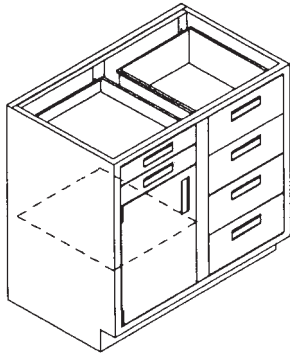
B3530-140B(R)
B3536-140B(R)
B3542-140B(R)
B3548-140B(R)



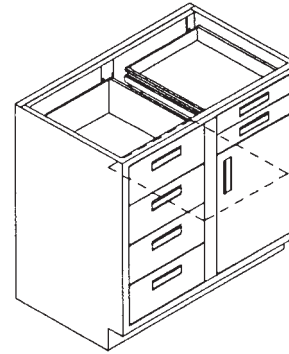
B3530-150(L)
B3536-150(L)
B3542-150(L)
B3548-150(L)



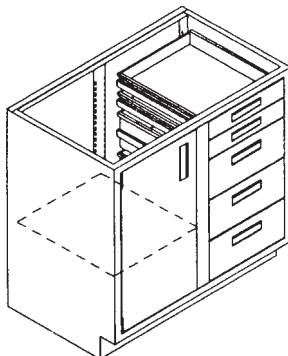
B3530-150(R)
B3536-150(R)
B3542-150(R)
B3548-150(R)



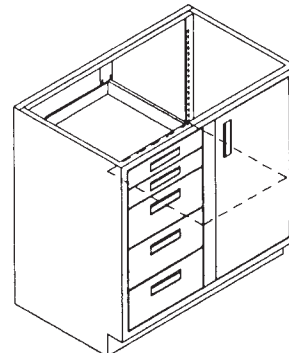
B3530-142(L)
B3536-142(L)
B3542-142(L)
B3548-142(L)



B3530-142(R)
B3536-142(R)
B3542-142(R)
B3548-142(R)

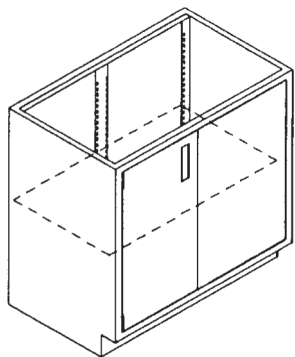


B3530-132(L)
B3536-132(L)
B3542-132(L)
B3548-132(L)

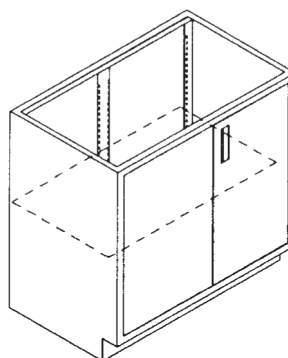


B3530-132(R)
B3536-132(R)
B3542-132(R)
B3548-132(R)

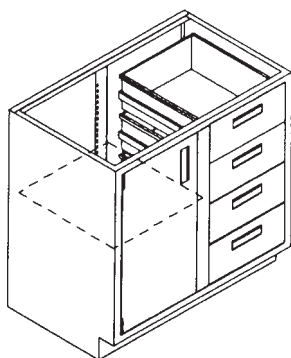
Base Cabinets Standing/Counter Height



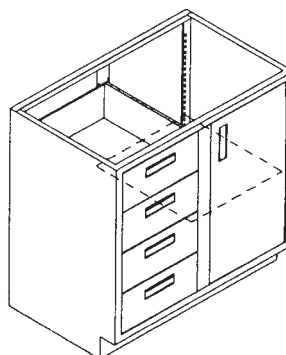
B3530-100(L)SP
B3536-100(L)SP
B3542-100(L)SP
B3548-100(L)SP



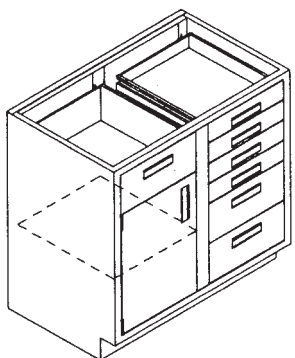
B3530-100(R)SP
B3536-100(R)SP
B3542-100(R)SP
B3548-100(R)SP



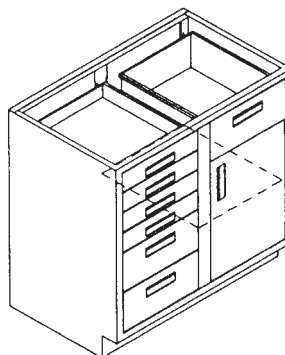
B3530-140A(L)
B3536-140A(L)
B3542-140A(L)
B3548-140A(L)



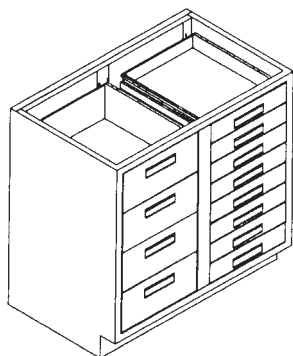
B3530-140A(R)
B3536-140A(R)
B3542-140A(R)
B3548-140A(R)



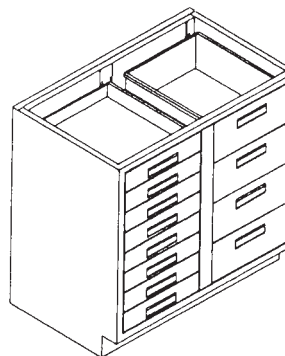
B3530-134(L)
B3536-134(L)
B3542-134(L)
B3548-134(L)



B3530-134(R)
B3536-134(R)
B3542-134(R)
B3548-134(R)



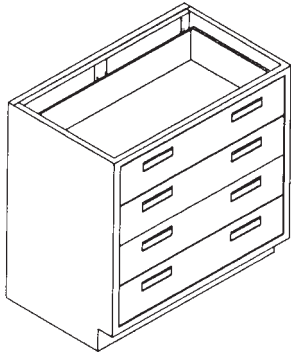
B3530-048A
B3536-048A
B3542-048A
B3548-048A



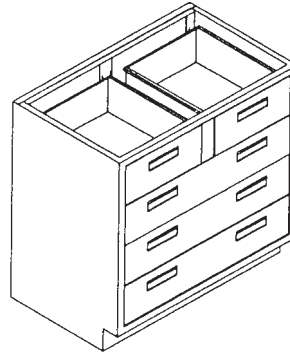
B3530-048B
B3536-048B
B3542-048B
B3548-048B

NOTE: When ordering units with configurations that are non-standard, drawings must accompany order.

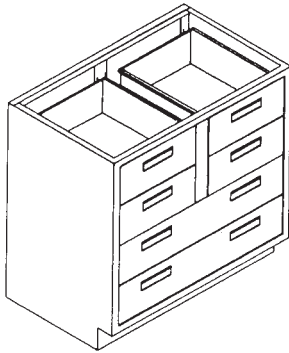
Base Cabinets Standing/Counter Height



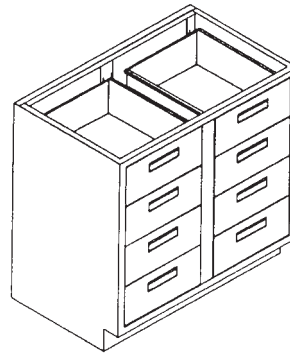
**B3530-040
B3536-040
B3542-040
B3548-040**



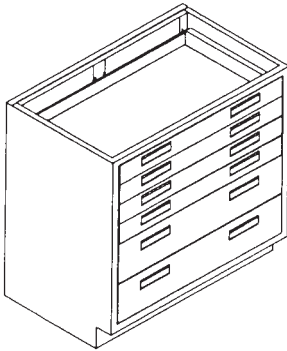
**B3530-050
B3536-050
B3542-050
B3548-050**



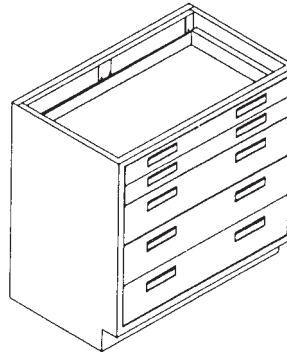
**B3530-060
B3536-060
B3542-060
B3548-060**



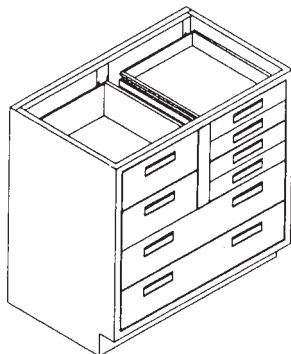
**B3530-080
B3536-080
B3542-080
B3548-080**



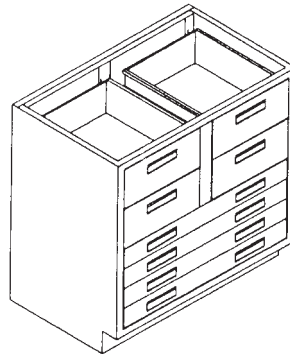
**B3530-024
B3536-024
B3542-024
B3548-024**



**B3530-032
B3536-032
B3542-032
B3548-032**

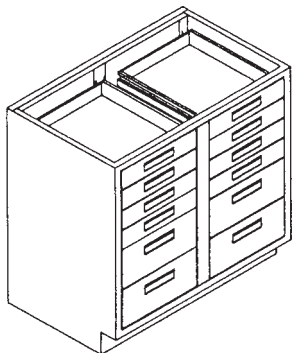


**B3530-044A
B3536-044A
B3542-044A
B3548-044A**

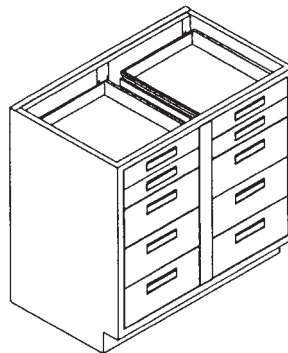


**B3530-044B
B3536-044B
B3542-044B
B3548-044B**

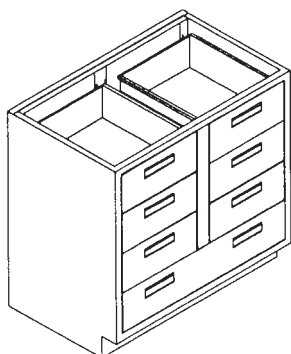
Base Cabinets Standing/Counter Height



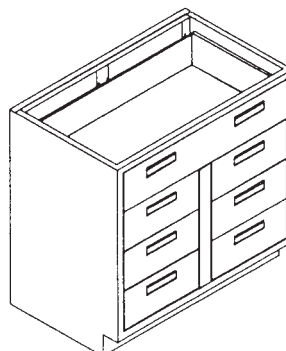
B3530-048C
B3536-048C
B3542-048C
B3548-048C



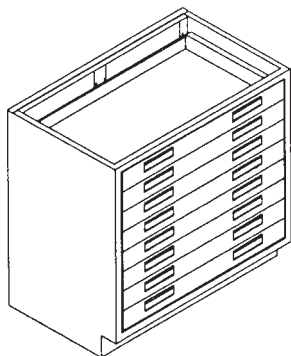
B3530-064
B3536-064
B3542-064
B3548-064



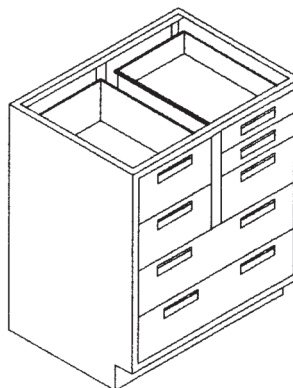
B3530-070A
B3536-070A
B3542-070A
B3548-070A



B3530-070B
B3536-070B
B3542-070B
B3548-070B



B3530-008
B3536-008
B3542-008
B3548-008

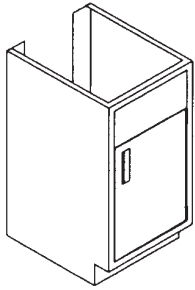


B3530-052
B3536-052
B3542-052
B3548-052

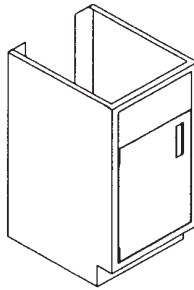
NOTE: When ordering units with configurations that are non-standard, drawings must accompany order.

Sink & Fume Hood Base Cabinets Stand Up Height

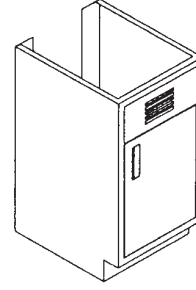
ALSO AVAILABLE IN SITTING/DESK HEIGHT



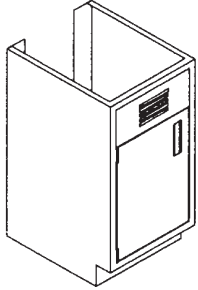
Sink Base
B3518-10S(R)
B3524-10S(R)



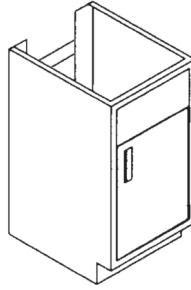
Sink Base
B3518-10S(L)
B3524-10S(L)



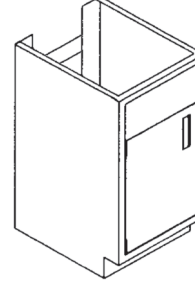
Sink Base
B3518-10S(R)
Louvered
B3524-10S(R)
Louvered



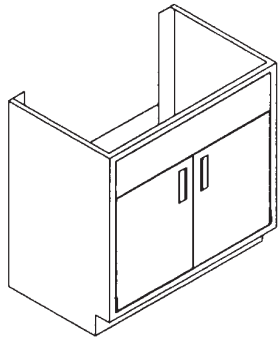
Sink Base
B3518-10S(L)
Louvered
B3524-10S(L)
Louvered



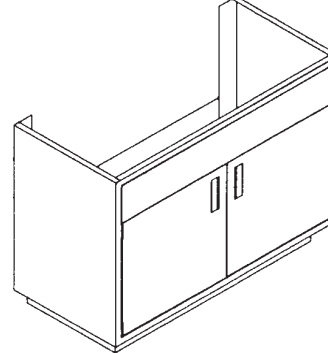
Hood Base
B3518-10P(R)
B3524-10P(R)



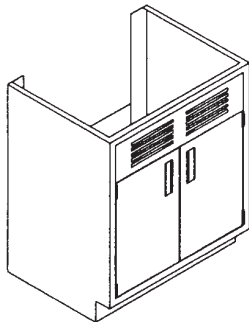
Hood Base
B3518-10P(L)
B3524-10P(L)



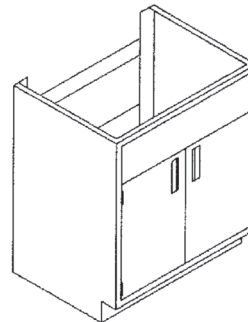
Sink Base
B3530-20S
B3536-20S
B3542-20S
B3548-20S
B3552-20S
B3558-20S



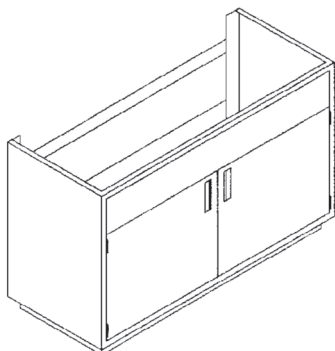
Sink Island Base
B3552-20SI
B3558-20SI



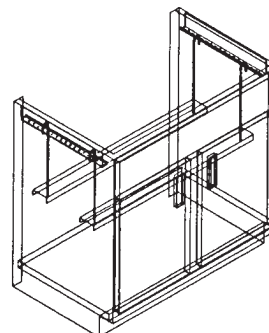
Sink Base
B3530-20S Louvered
B3536-20S Louvered
B3542-20S Louvered
B3548-20S Louvered
B3552-20S Louvered
B3558-20S Louvered



Hood Base
B3530-20P
B3536-20P
B3542-20P
B3548-20P
B3552-20P
B3558-20P



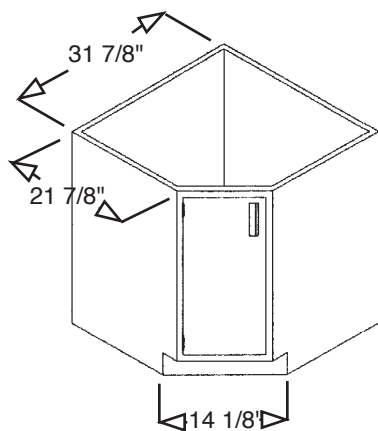
Hood Island Base
B3552-20PI
B3558-20PI



**Sink Support
Assembly**

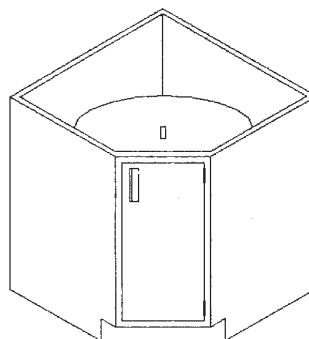
SS-C14	SS-36
SS-18	SS-48
SS-24	SS-42
SS-30	SS-52
	SS-58

Base Cabinets Special Purpose Bases

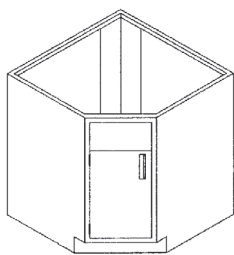


Typical Dimensions

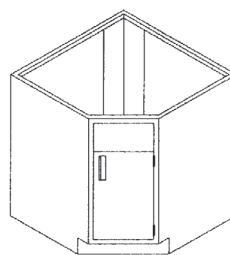
C3514-100(L)



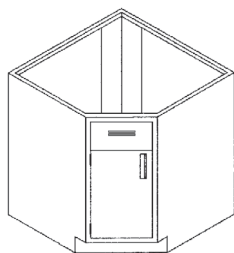
C3514-100(R)
*(SHOWN WITH
OPTIONAL LAZY
SUSAN INSTALLED)*



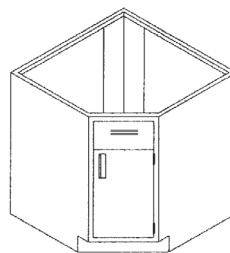
C3514-10S(L)



C3514-10S(R)

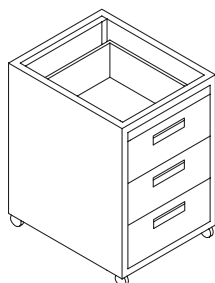


C3514-10S(L)
Louvered

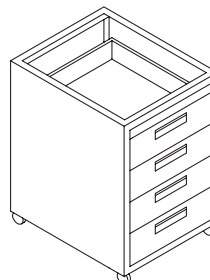


C3514-10S(R)
Louvered

Mobile Bases



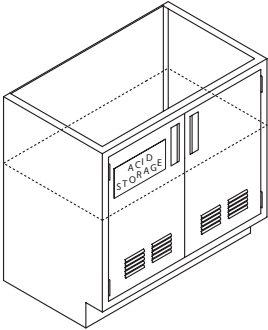
MB2915-030
MB2918-030
MB2924-030
MB2930-030



MB3515-040
MB3518-040
MB3524-040
MB3530-040

Acid Storage Cabinet

Metal-Arc Acid Storage Cabinets are reinforced steel with a hi-tech performance polymer alloy coating. This reduces the possibilities of corrosion. Note: All Acid Cabinets are 18" deep.

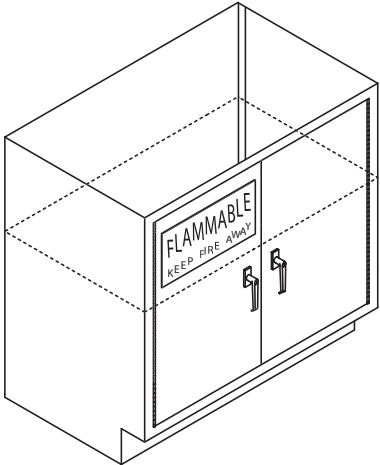


- | | | |
|-------------|-------------|----------------|
| ASB2918-100 | ASB3518-100 | } 1 Door Units |
| ASB2924-100 | ASB3524-100 | |
| ASB2930-200 | ASB3530-200 | |
| ASB2936-200 | ASB3536-200 | |
| ASB2942-200 | ASB3542-200 | |
| ASB2948-200 | ASB3548-200 | |
| ASB2952-200 | ASB3552-200 | |
| ASB2958-200 | ASB3558-200 | |

Add Suffix "VK" if Vent Kit is Required

Flammable Storage Cabinet

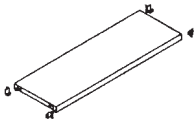
Note: All Flammable Cabinets are 18" deep.



- | | | |
|-------------|-------------|----------------|
| FSB2924-100 | FSB3524-100 | } 1 Door Units |
| FSB2930-200 | FSB3530-200 | |
| FSB2936-200 | FSB3536-200 | |
| FSB2942-200 | FSB3542-200 | |
| FSB2948-200 | FSB3548-200 | |
| FSB2952-200 | FSB3552-200 | |
| FSB2958-200 | FSB3558-200 | |

Standard Shelf

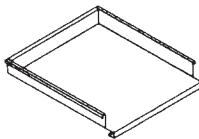
Standard base cabinet shelf with brackets. Available for 29" and 35" units.



- BS15
- BS18
- BS21
- BS24
- BS30
- BS36
- BS42
- BS48

Pull-Out Shelf

Optional pull-out shelf for base cabinets. Shelf is full extension with ball bearing slides. *Note: Cabinet door must be open 90 deg. to allow for extension.



- BPS15
- BPS18
- BPS21
- BPS24
- BPS30
- BPS36
- BPS42
- BPS48

NOTE: When ordering units with configurations that are non-standard, drawings must accompany order.

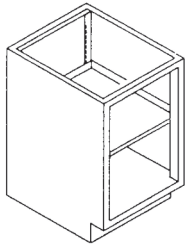
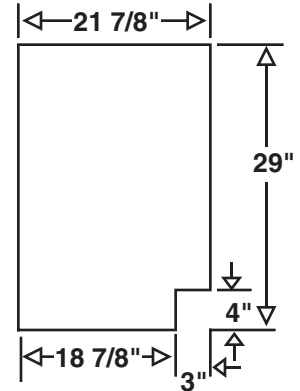
Base Cabinets Sitting/Desk Height

Sitting/Desk Height 29" High X 22" Deep. Units are available in various widths as shown. Drawer units feature full extension slides. A single shelf is standard in the units where shown. Additional shelves are available (see page 11). Specify left or right hand doors. Hand is indicated by side of door upon which hinges are located.

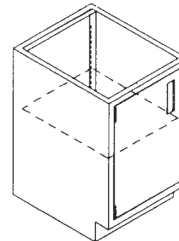
Part Numbering System

Sample: B2930-044 1= Base Unit 4= #Doors
 12233-456 2= Height 5= #Drawers
 3= Width 6= #Half Drawers
 7= Features

- * "F" = File Drawer
- * "S" = Sink Unit
- * "P" = Panel over door(s)
- * "R" = Right hinge facing cab.
- * "L" = Left hinge facing cab.
- * "B" = Bin Drawer

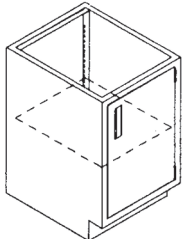


B2915-000
 B2918-000
 B2924-000
 B2930-000
 B2936-000
 B2942-000
 B2948-000

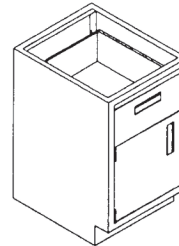


End View

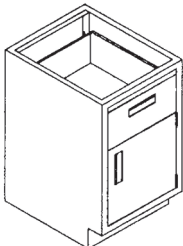
B2915-100(L)
 B2918-100(L)
 B2924-100(L)



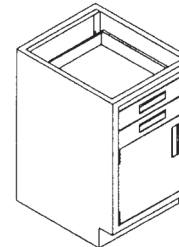
B2915-100(R)
 B2918-100(R)
 B2924-100(R)



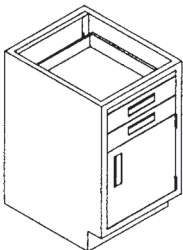
B2915-110(L)
 B2918-110(L)
 B2924-110(L)



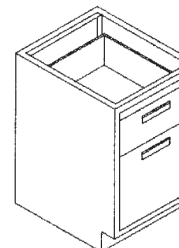
B2915-110(R)
 B2918-110(R)
 B2924-110(R)



B2915-102(L)
 B2918-102(L)
 B2924-102(L)



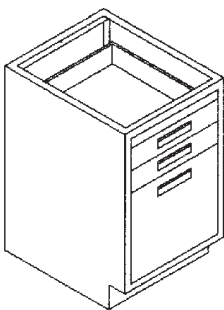
B2915-102(R)
 B2918-102(R)
 B2924-102(R)



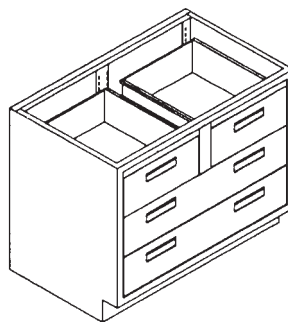
B2915-F10
 B2918-F10
 B2924-F10

NOTE: When ordering units with configurations that are non-standard, drawings must accompany order.

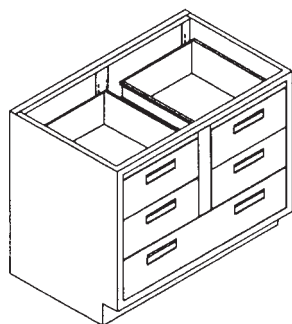
Base Cabinets Sitting/Desk Height



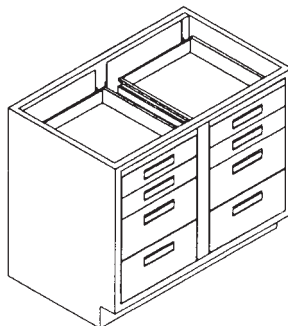
**B2915-F02
B2918-F02
B2924-F02**



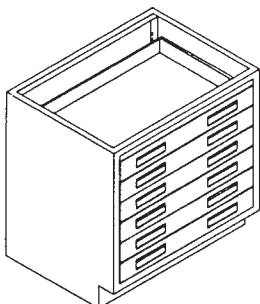
**B2930-040
B2936-040
B2942-040
B2948-040**



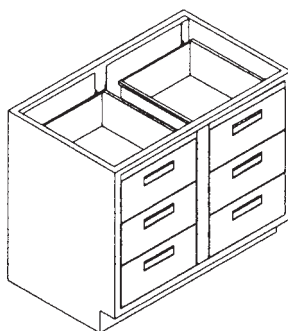
**B2930-050
B2936-050
B2942-050
B2948-050**



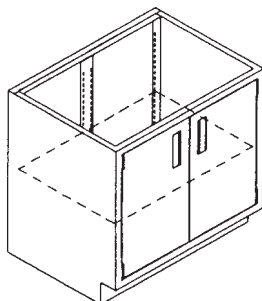
**B2930-044
B2936-044
B2942-044
B2948-044**



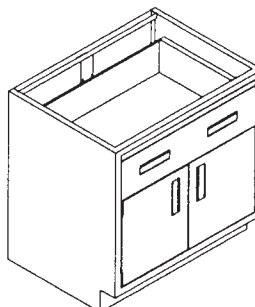
**B2930-006
B2936-006
B2942-006
B2948-006**



**B2930-060
B2936-060
B2942-060
B2948-060**

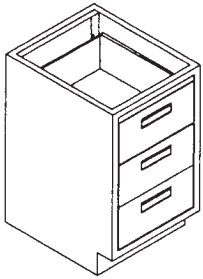


**B2930-200
B2936-200
B2942-200
B2948-200**

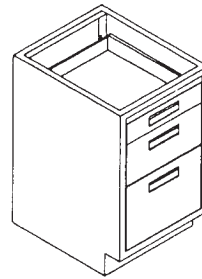


**B2930-210
B2936-210
B2942-210
B2948-210**

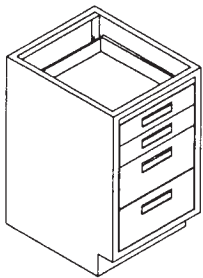
Base Cabinets Sitting/Desk Height



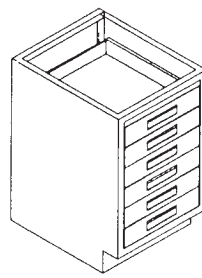
**B2915-030
B2918-030
B2924-030**



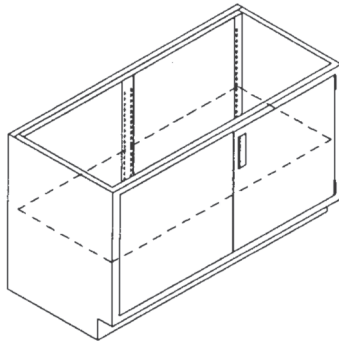
**B2915-B11
B2918-B11
B2924-B11**



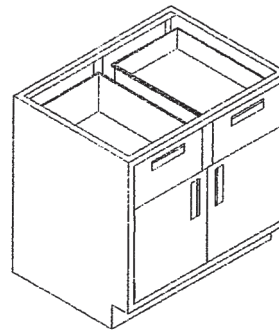
**B2915-022
B2918-022
B2924-022**



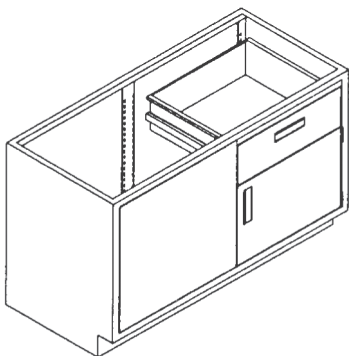
**B2915-006
B2918-006
B2924-006**



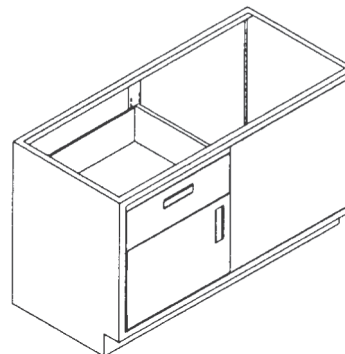
**B2930-100(RorL)SP
B2936-100(RorL)SP
B2942-100(RorL)SP
B2948-100(RorL)SP**



**B2930-220
B2936-220
B2942-220
B2948-220**

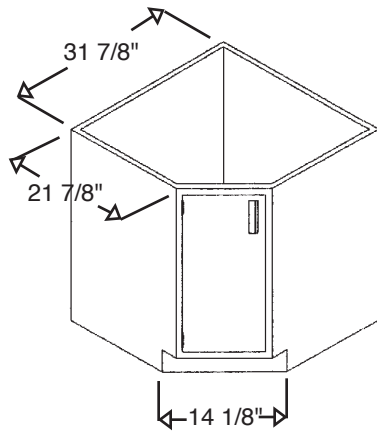


**B2930-110(R)SP
B2936-110(R)SP
B2942-110(R)SP
B2948-110(R)SP**



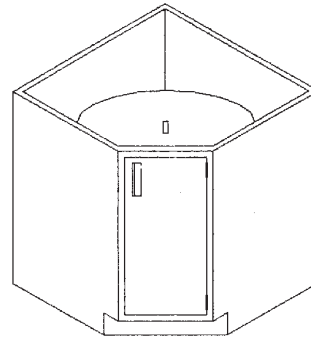
**B2930-110(L)SP
B2936-110(L)SP
B2942-110(L)SP
B2948-110(L)SP**

Airfoil Perchloric Acid Assemblies



Typical Dimensions

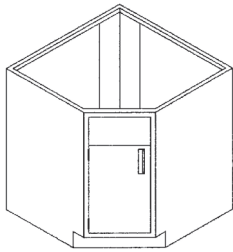
C2914-100(L)



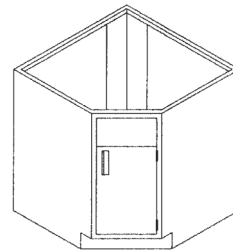
C2914-100(R)

(SHOWN WITH OPTIONAL
LAZY SUSAN INSTALLED)

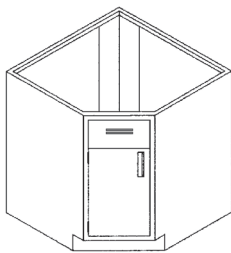
Corner Sink Base Cabinets sitting/Desk Height



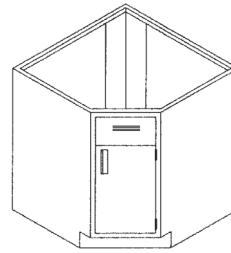
C2914-10S(L)



C2914-10S(R)

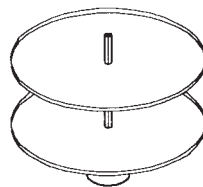


C2914-10S(L)
Louvered



C2914-10S(R)
Louvered

Optional Lazy Susan (For Corner Base Cabinets)



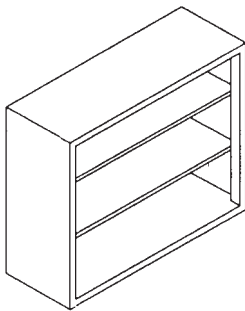
LS-29
LS-35

Wall Case Units

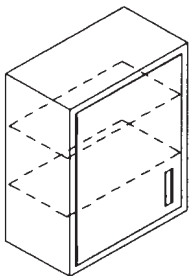
Wall cases are available in sizes ranging from 24", 31", 36" and 48" high and 18" wide to 48" wide. All units are 13" deep as standard. 24" high units have one shelf. 31" high to 36" high units have two shelves. 48" high units have three shelves. Additional shelves are available. On single hinge door units, specify (R) or (L) hinge. 48" high units have 3 hinges per door.

Part Numbering System

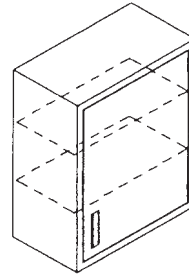
Sample:	W3036-2GS	1= Wall Case	4= #Doors
	12233-4567	2= Height	5= Material of doors*
		3= Width	6= Type of doors* *
		* Steel, Glass or no doors (open)	7= Depth
		** Hinged, Sliding or Sliding/framed	Note: 13" dp. standard,
		* "R" = Right hinge facing cabinet	16" deep cabinets available -
		* "L" = Left hinge facing cabinet	indicate by final suffix of 16,
			(Example: W2418-00016)



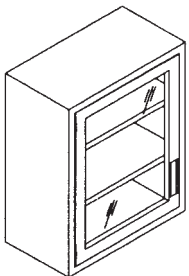
W2418-000	W3018-000	W3618-000	W4818-000
W2424-000	W3024-000	W3624-000	W4824-000
W2430-000	W3030-000	W3630-000	W4830-000
W2436-000	W3036-000	W3636-000	W4836-000
W2442-000	W3042-000	W3642-000	W4842-000
W2448-000	W3048-000	W3648-000	W4848-000



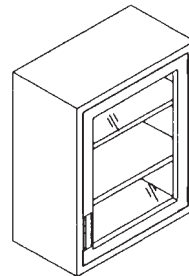
W2418-1SH(L)
W3018-1SH(L)
W3618-1SH(L)
W4818-1SH(L)
W2424-1SH(L)
W3024-1SH(L)
W3624-1SH(L)
W4824-1SH(L)



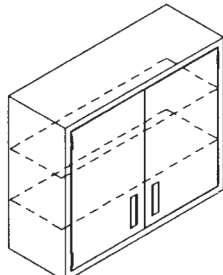
W2418-1SH(R)
W3018-1SH(R)
W3618-1SH(R)
W4818-1SH(R)
W2424-1SH(R)
W3024-1SH(R)
W3624-1SH(R)
W4824-1SH(R)



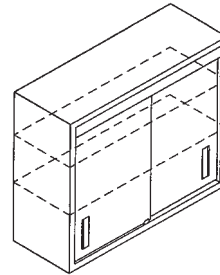
W2418-1GH(L)
W3018-1GH(L)
W3618-1GH(L)
W4818-1GH(L)
W2424-1GH(L)
W3024-1GH(L)
W3624-1GH(L)
W4824-1GH(L)



W2418-1GH(R)
W3018-1GH(R)
W3618-1GH(R)
W4818-1GH(R)
W2424-1GH(R)
W3024-1GH(R)
W3624-1GH(R)
W4824-1GH(R)



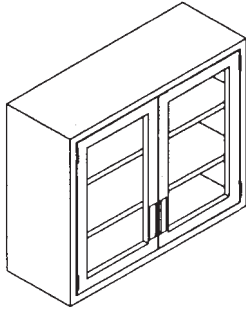
W2430-2SH	W3630-2SH
W2436-2SH	W3636-2SH
W2442-2SH	W3642-2SH
W2448-2SH	W3648-2SH
W3030-2SH	W4830-2SH
W3036-2SH	W4836-2SH
W3042-2SH	W4842-2SH
W3048-2SH	W4848-2SH



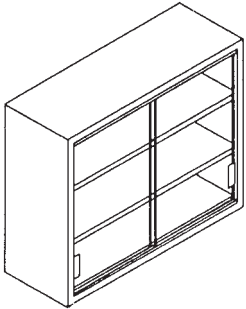
W2430-2SS	W3630-2SS
W2436-2SS	W3636-2SS
W2442-2SS	W3642-2SS
W2448-2SS	W3648-2SS
W3030-2SS	W4830-2SS
W3036-2SS	W4836-2SS
W3042-2SS	W4842-2SS
W3048-2SS	W4848-2SS

NOTE: When ordering units with configurations that are non-standard, drawings must accompany order.

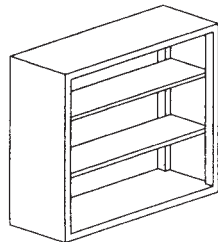
Wall Case Units



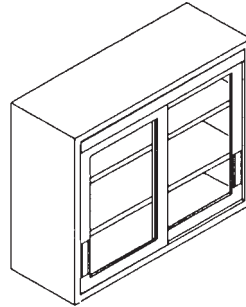
W2430-2GH W3630-2GH
 W2436-2GH W3636-2GH
 W2442-2GH W3642-2GH
 W2448-2GH W3648-2GH
 W3030-2GH W4830-2GH
 W3036-2GH W4836-2GH
 W3042-2GH W4842-2GH
 W3048-2GH W4848-2GH



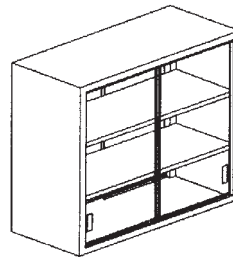
W2430-2GS W3630-2GS
 W2436-2GS W3636-2GS
 W2442-2GS W3642-2GS
 W2448-2GS W3648-2GS
 W3030-2GS W4830-2GS
 W3036-2GS W4836-2GS
 W3042-2GS W4842-2GS
 W3048-2GS W4848-2GS



WDS3030-00013 open-2-s
 WDS3036-00013 open-2-s
 WDS3048-00013 open-2-s

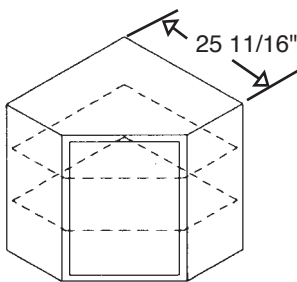


W2430-2GSF W3630-2GSF
 W2436-2GSF W3636-2GSF
 W2442-2GSF W3642-2GSF
 W2448-2GSF W3648-2GSF
 W3030-2GSF W4830-2GSF
 W3036-2GSF W4836-2GSF
 W3042-2GSF W4842-2GSF
 W3048-2GSF W4848-2GSF

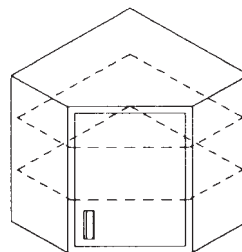


WDS3036-4GS13 open-2-s
 WDS3048-4GS13 open-2-s

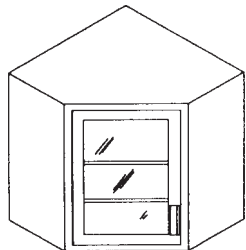
Corner Wall Case Units



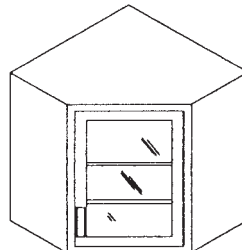
WC3018-000
 WC3618-000
 WC3018-00016
 WC3618-00016



WC3018-1SH(RorL)
 WC3618-1SH(RorL)
 WC3018-1SH(RorL)16
 WC3618-1SH(RorL)16



WC3018-1GH(L)
 WC3618-1GH(L)
 WC3018-1GH(L)16
 WC3618-1GH(L)16



WC3018-1GH(R)
 WC3618-1GH(R)
 WC3018-1GH(R)16
 WC3618-1GH(R)16

NOTE: When ordering units with configurations that are non-standard, **drawings must accompany order.**
NOTE: 16" deep corner wall case dimension = 28 11/16"

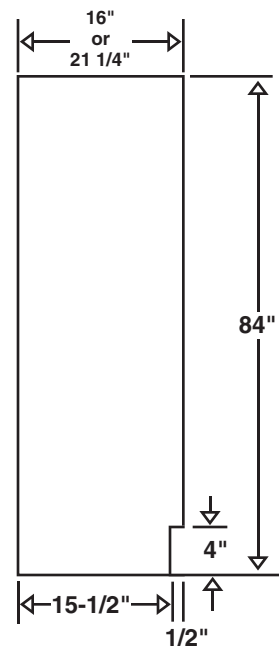
Floor Case Units

Floor cases are available in widths ranging from 18" to 48". All units are 84" high and are available in either 16" or 21 1/4" depths. Five shelves are standard equipment. Additional shelves are available. On single hinge door units, specify (R) or (L) hinge.

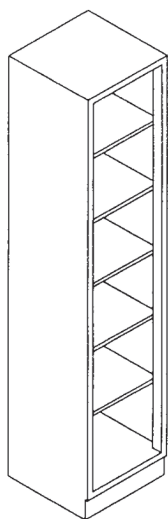
Part Numbering System

Sample: F8418-2SS16 1= Floor Case 4= #Doors
 12233-456 2= Height 5= Material of doors*
 3= Width 6= Type of doors* *
 7= Depth

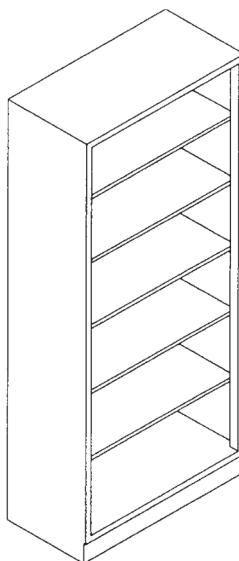
- * Steel Glass or no doors (open)
- ** Hinged, Sliding or Sliding/framed
- * "R" = Right hinge facing cabinet
- * "L" = Left hinge facing cabinet



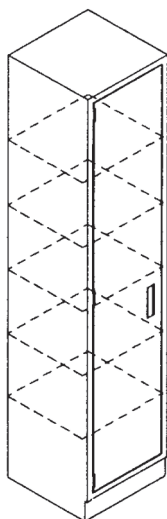
End View (16" Dp. Unit)



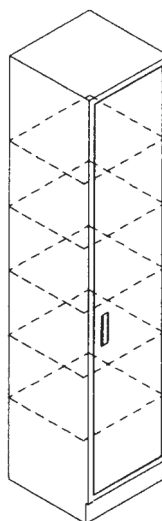
F8418-00016
 F8418-00021
 F8424-00016
 F8424-00021



F8430-00016
 F8430-00021
 F8436-00016
 F8436-00021
 F8442-00016
 F8442-00021
 F8448-00016
 F8448-00021



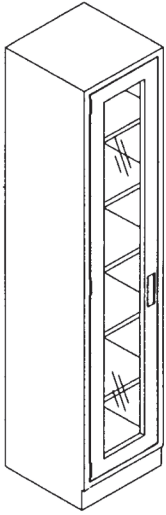
F8418-1SH16(L)
 F8418-1SH21(L)
 F8424-1SH16(L)
 F8424-1SH21(L)



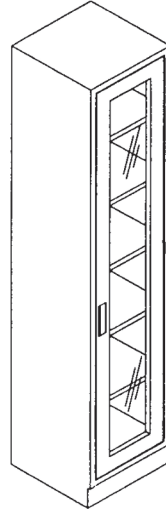
F8418-1SH16(R)
 F8418-1SH21(R)
 F8424-1SH16(R)
 F8424-1SH21(R)

NOTE: When ordering units with configurations that are non-standard, drawings must accompany order.

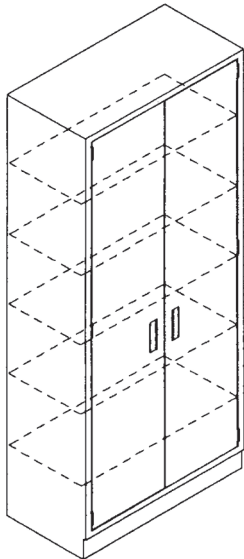
Floor Case Units



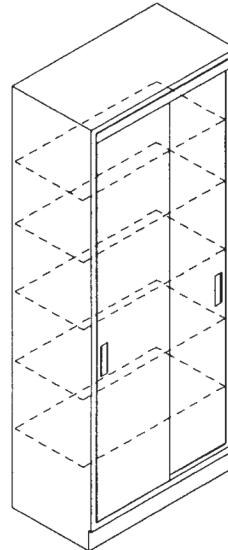
F8418-1GH16(L)
 F8418-1GH21(L)
 F8424-1GH16(L)
 F8424-1GH21(L)



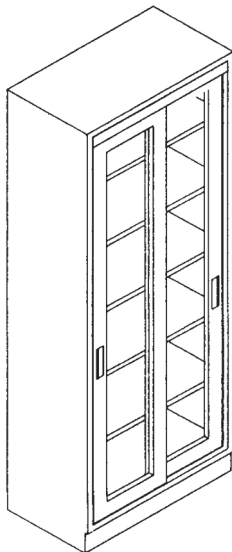
F8418-1GH16(R)
 F8418-1GH21(R)
 F8424-1GH16(R)
 F8424-1GH21(R)



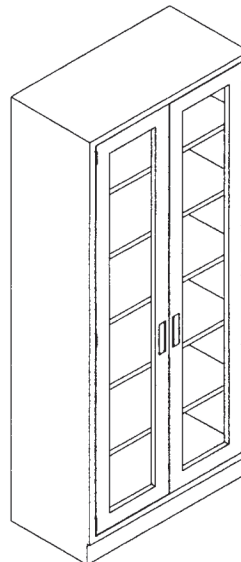
F8430-2SH16
 F8430-2SH21
 F8436-2SH16
 F8436-2SH21
 F8442-2SH16
 F8442-2SH21
 F8448-2SH16
 F8448-2SH21



F8430-2SS16
 F8430-2SS21
 F8436-2SS16
 F8436-2SS21
 F8442-2SS16
 F8442-2SS21
 F8448-2SS16
 F8448-2SS21



F8430-2GSF16
 F8430-2GSF21
 F8436-2GSF16
 F8436-2GSF21
 F8442-2GSF16
 F8442-2GSF21
 F8448-2GSF16
 F8448-2GSF21



F8430-2GH16
 F8430-2GH21
 F8436-2GH16
 F8436-2GH21
 F8442-2GH16
 F8442-2GH21
 F8448-2GH16
 F8448-2GH21

NOTE: When ordering units with configurations that are non-standard, drawings must accompany order.

Fume Hoods

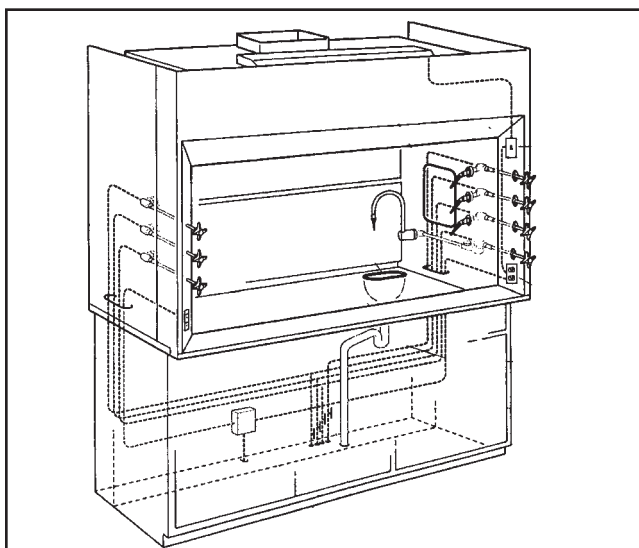
The name Labscape has long been synonymous with quality and longevity. Our newly redesigned fume hood line is a proud example of this reputation. Over 50 years of experience combined with state of the art engineering, manufacturing and testing facilities provide you with a fume hood unsurpassed in quality and performance.

DESIGN

The design of our fume hood line is founded on three basic principals: safety, flexibility and aesthetics.

SAFETY

Safety should be the number one concern when choosing a fume hood. That is why our hoods are tested and certified in accordance with the Ashrae method of testing performance of laboratory fume hoods.



FLEXIBILITY

Construction of our fume hood begins with a heavy duty internal framework. This universal framework is the foundation for a variety of standard and optional features.

These features include. . .

- Chemical resistant interiors of resin-chem, PVC or stainless steel
- PVC or stainless sash guides
- Vertical, horizontal or combination sashes in a variety of materials
- Easy access for service fixture installation
- Manual or remote baffle adjustment
- Flourescent light fixture
- Optional factory installation of service fixtures

The flexibility of our design will allow you to select standard options that will meet the requirements of your application.

AESTHETICS

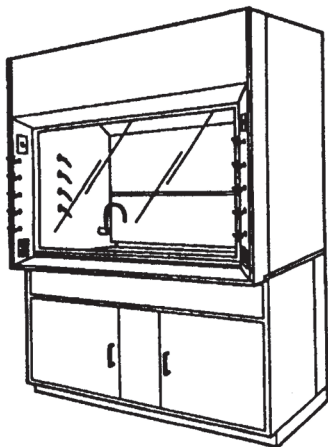
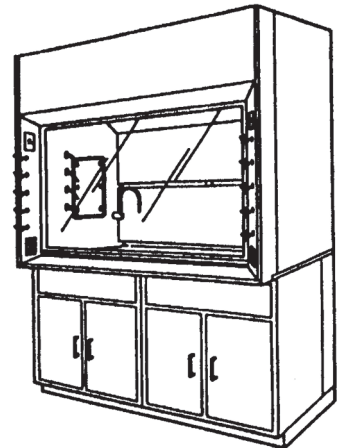
Our quality, pride and craftsmanship will insure that your Labscape Fume Hood will be a handsome center piece in your laboratory for years to come.

CATALOG

For a complete fume hood catalog contact your local Labscape representative or contact us direct at the following address:

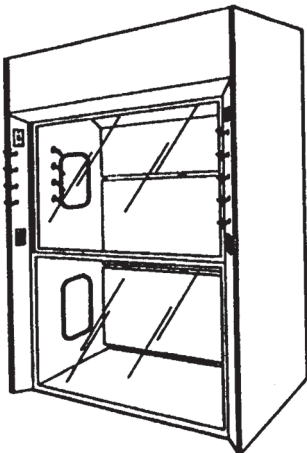
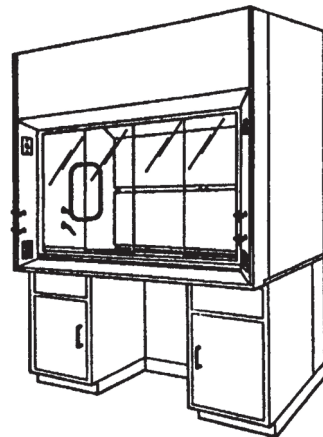
Labscape
100 Hilltop Road
Ramsey, NJ 07446
Telephone: 800.898.6649

***BYPASS & VARIABLE
AIR VOLUME (VAV)
FUME HOODS***



***PERCHLORIC ACID AND
RADIO-ISOTOPE FUME HOODS***

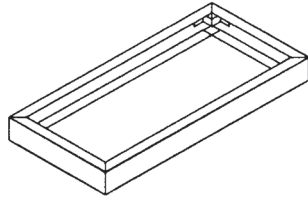
ADA FUME HOODS



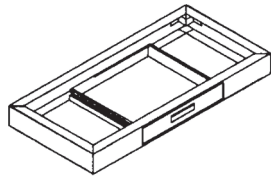
***WALK-IN AND SPECIAL
FUME HOODS***

Aprons & Drawer Housings

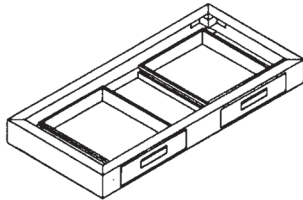
Part Numbering System: A046022-000 1= Apron 4= Depth
 1223344-555 2= Height 5= # Drawers
 3= Width



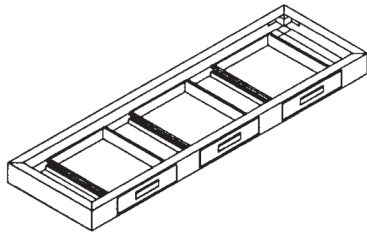
A042422-000	A042428-000
A043022-000	A043028-000
A043622-000	A043628-000
A044222-000	A044228-000
A044822-000	A044828-000
A045422-000	A045428-000
A046022-000	A046028-000
A046622-000	A046628-000
A047222-000	A047228-000



A042422-001	A042428-001
A043022-001	A043028-001
A043622-001	A043628-001
A044222-001	A044228-001



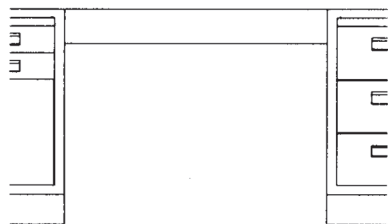
A044222-002	A044228-002
A044822-002	A044828-002
A045422-002	A045428-002
A046022-002	A046028-002
A046622-002	A046628-002
A047222-002	A047228-002



A047222-003	A047228-003
-------------	-------------

Note: Apron heights are 4 1/2" high.

Knee Space Rails

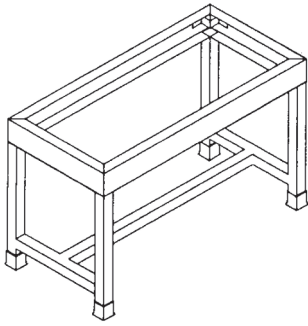


KSR0418	KSR0452
KSR0424	KSR0454
KSR0430	KSR0460
KSR0436	KSR0466
KSR0442	KSR0472
KSR0448	KSR0484
	KSR0496

NOTE: When ordering units with configurations that are non-standard, drawings must accompany order.

Utility Tables & Components

29" HIGH TABLES



22" DEEP

UT292422-000
 UT293022-000
 UT293622-000
 UT294222-000
 UT294822-000
 UT296022-000
 UT297222-000

28" DEEP

UT292428-000
 UT293028-000
 UT293628-000
 UT294228-000
 UT294828-000
 UT296028-000
 UT297228-000

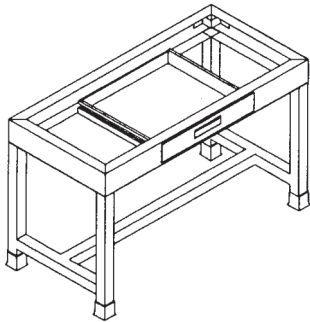
35" HIGH TABLES

22" DEEP

UT352422-000
 UT353022-000
 UT353622-000
 UT354222-000
 UT354822-000
 UT356022-000
 UT357222-000

28" DEEP

UT352428-000
 UT353028-000
 UT353628-000
 UT354228-000
 UT354828-000
 UT356028-000
 UT357228-000



22" DEEP

UT292422-001
 UT293022-001
 UT293622-001
 UT294222-001

28" DEEP

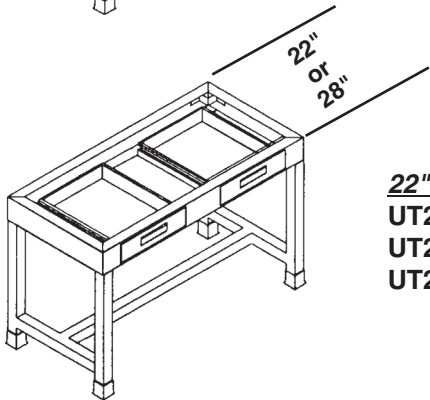
UT292428-001
 UT293028-001
 UT293628-001
 UT294228-001

22" DEEP

UT352422-001
 UT353022-001
 UT353622-001
 UT354222-001

28" DEEP

UT352428-001
 UT353028-001
 UT353628-001
 UT354228-001



22" DEEP

UT294822-002
 UT296022-002
 UT297222-002

28" DEEP

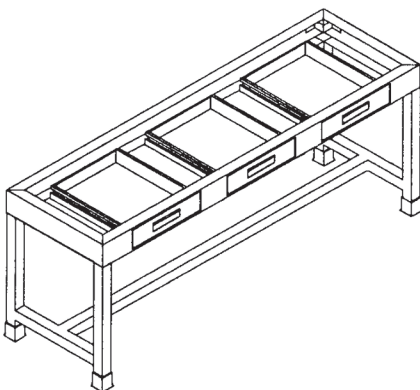
UT294828-002
 UT296028-002
 UT297228-002

22" DEEP

UT354822-002
 UT356022-002
 UT357222-002

28" DEEP

UT354828-002
 UT356028-002
 UT357228-002



22" DEEP

UT297222-003

28" DEEP

UT297228-003

22" DEEP

UT357222-003

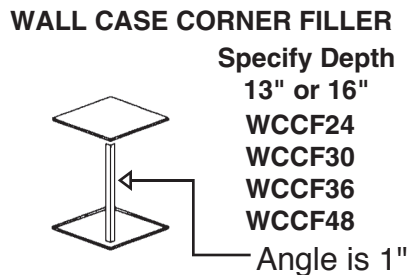
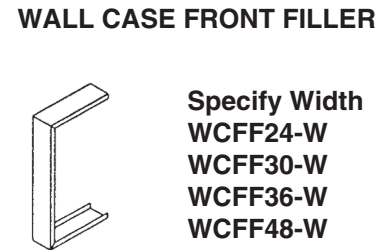
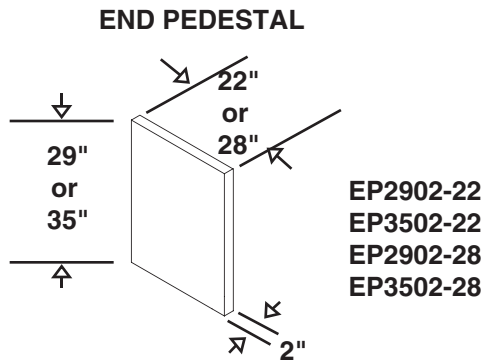
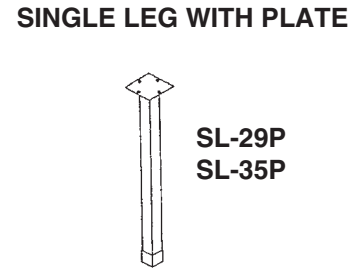
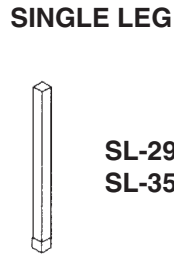
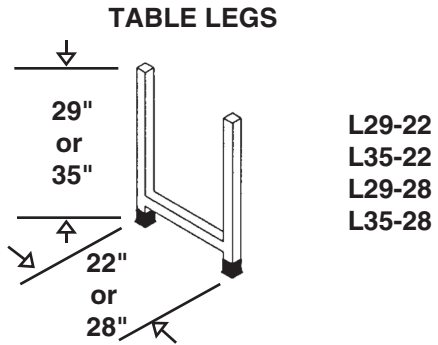
28" DEEP

UT357228-003

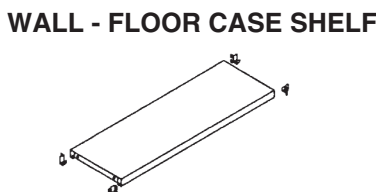
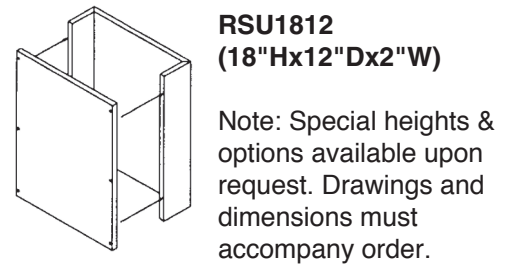
NOTE: UTILITY TABLES DO NOT INCLUDE COUNTER TOPS.

NOTE: When ordering units with configurations that are non-standard, drawings must accompany order.

Accessories



REAGENT SHELF UPRIGHT

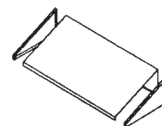


SLOPE TOP WITH END CAPS

PART NUMBERS

WALL	FLOOR
WS1813	FS1816
WS2413	FS2416
WS3013	FS3016
WS3613	FS3616
WS4213	FS4216
WS4813	FS4816
WS1816	FS1821
WS2416	FS2421
WS3016	FS3021
WS3616	FS3621
WS4216	FS4221
WS4816	FS4821

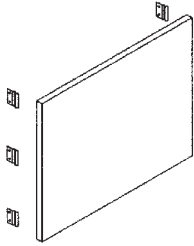
PART NUMBERS



ST13-18	ST21-18
ST13-24	ST21-24
ST13-30	ST21-30
ST13-36	ST21-36
ST13-42	ST21-42
ST13-48	ST21-48
ST16-18	
ST16-24	
ST16-30	
ST16-36	
ST16-42	
ST16-48	

NOTE: When ordering units with configurations that are non-standard, drawings must accompany order.

KNEE SPACE PANELS



For use in sit down situation with apron

24" HIGH

KSP 2424
KSP 2430
KSP 2436
KSP 2442
KSP 2448
KSP 2454
KSP 2460
KSP 2466
KSP 2472

For use in standing situation with apron, or sit down without apron

29" HIGH

KSP 2924
KSP 2930
KSP 2936
KSP 2942
KSP 2948
KSP 2954
KSP 2960
KSP 2966
KSP 2972

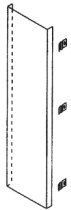
For use in standing situation without apron

35" HIGH

KSP 3524
KSP 3530
KSP 3536
KSP 3542
KSP 3548
KSP 3554
KSP 3560
KSP 3566
KSP 3572

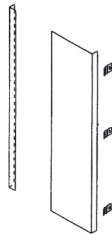
Fill Panels

All base cabinet fillers are 35" high. Fillers for 29" high (low base) cabinets will need to be trimmed by the installer. Other sizes available upon request.



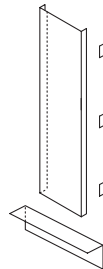
C-FILLER

CF35-8
CF35-14



L-FILLER

LF35-1
LF35-7
LF35-11



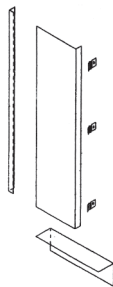
C-FRONT FILLER

FFC35-8
FFC35-14



CORNER FILLER

ICF35-1
ICF35-2
ICF35-4



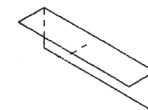
L-FRONT FILLER

FFL35-8
FFL35-14



FLOOR CASE FILLER

FFL84-2
FFL84-8



TOE SPACE FILLER

TSF-00

* Last number(s) in filler designation indicates width of filler assembly.

Labscape
800.898.6649
www.labscape.com

