

MOTORIZED SHADES WITH VIRTUAL CORD

Table of Contents

Features and Size Considerations

| | |
|---|-------|
| Virtual Cord™ Motorized Shade Features, Warranty | 2 |
| Size Considerations: CrystalPleat® Cellular and Pleated Shades Motorized Lift | 3 |
| Size Considerations: Tradewinds® Natural Shades Motorized Lift | 4 |
| Size Considerations: Artisan Soft Shade Motorized Lift | 5 |
| Size Considerations: LightWeaves® Roller and Solar Shades Motorized Lift | 6 |
| 12V Motor: Maximum Shade Size | 7-9 |
| Dual Shades Maximum Shade Size | 10-12 |

Options

| | |
|--|-------|
| Virtual Cord Options: 12-Volt Power Considerations | 13-14 |
| Virtual Cord Options: 12-Volt Power Components, Radio Frequency Controls | 15 |

Pricing Chart and Option Pricing

| | |
|--|----|
| Low Voltage Radio Frequency, Motor Package Pricing | 17 |
| Optional Control Pricing | 17 |
| Optional Replacement Controls and Installation Accessories Pricing | 17 |

Virtual Cord™ Features

Virtual Cord Motorized Shade Features

Refer to individual base price list for specific option and size information for the product being ordered.

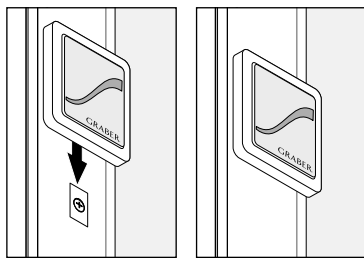
Radio Frequency (RF) Features

Graber Virtual Cord controlled motorized shades feature advanced radio technology which provides reliable, effortless operation of window coverings. The radio technology utilized is “Z-Wave” which is supported by an alliance of countless smart home products and home automation providers making integration simple and inexpensive. Graber Virtual Cord motorized shades are whisper quiet, simple to install and adjust, and simple to operate. These automated shades also feature:

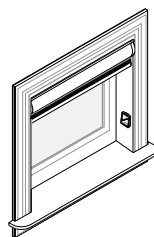
- Simple, intuitive control by means of the unique Virtual Cord (Included with every shade)
- An optional single channel remote is also available to control shades individually or in a group
- Shades can be conveniently operated from virtually anywhere in the home, up to 65 feet (19.9 m)
- Consistent motor speed regardless of size or weight
- Efficiently manages energy (heat gain and loss)
- A safer alternative to accessible cords that are traditionally used to operate window coverings; ideal for homes with children and pets
- Clean design with LED operation confirmation
- Push button control on shade end cap provides both a programming function at set-up and shade operation should the control be misplaced
- LED feedback on controls simplify operation and programming
- Quiet, smooth shade operation
- Limit safety protection feature simplifies reprogramming, should it be necessary, while protecting the shade from damage
- Convenient soft-start and soft-end add a touch of class to shade travel
- Low voltage motorization requires no costly electrical hard-wiring

Control options available:

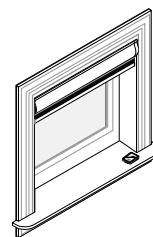
- Virtual Cord™: Simple, convenient control at the window shade location or control across the room. (Included with shade)



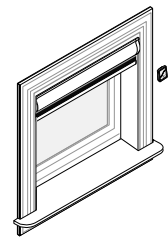
Virtual Cord Control



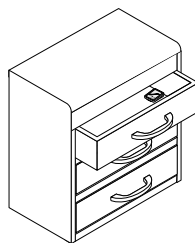
Attached to the window molding



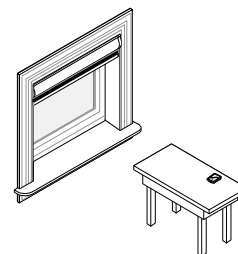
Attached to the window sill



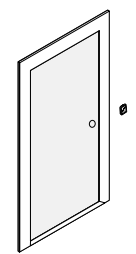
Attached to the wall



Store in a drawer

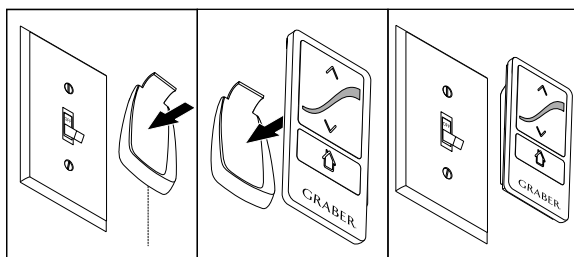


On a table



Mounted by the door

- Optional single channel remote: control can be conveniently mounted or placed on a table and controlled from anywhere in the room
 - Create group shade control
 - Set and control an intermediate position (Home)



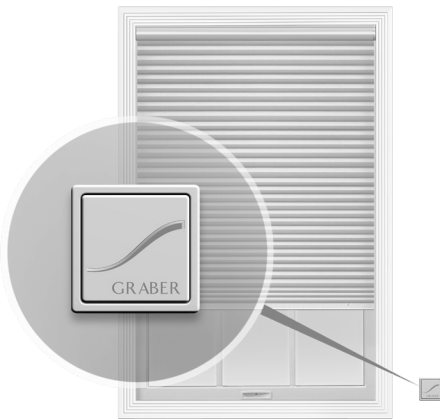
Single Channel Remote

Warranty

Motorization components and accessories have a five-year limited warranty, excluding batteries.

Features and Size Considerations

CrystalPleat® Cellular and Pleated Shades Motorized Lift



Refer to individual base price list for specific option and size information for the product being ordered.

Features

- Simple, intuitive control by means of the unique Virtual Cord™ (Included with every shade)
- An optional single channel remote is also available to control shades individually or in a group
- Shades can be conveniently operated from virtually anywhere in the home, up to 65 feet (19.9 m)
- Consistent motor speed regardless of size or weight
- Efficiently manages energy (heat gain and loss)
- A safer alternative to accessible cords that are traditionally used to operate window coverings; ideal for homes with children and pets
- Clean design with LED operation confirmation
- Push button control on shade end cap provides both a programming function at set-up and shade operation should the control be misplaced
- LED feedback on controls simplify operation and programming
- Quiet, smooth shade operation
- Limit safety protection feature simplifies reprogramming, should it be necessary, while protecting the shade from damage
- Convenient soft-start and soft-end add a touch of class to shade travel
- Low voltage motorization requires no costly electrical hard-wiring
- Powered with batteries, plug-in transformer or multi-motor power supply
- Motor located on right side within headrail
- Not available with Bottom Up/Top Down, Top Down Only, Sky Track, Specialty shapes or multiple shades on one headrail
- Not available with hold-down brackets or side mounts

Control and Power Options

- Multiple control and power options available; see Virtual Cord options for availability

NOTE: Motorization components and accessories have a five-year limited warranty, excluding batteries.

Cellular Size Considerations

| | Minimum Width* inches (cm) | Maximum Width inches (cm) | Minimum Height inches (cm) | Maximum Height inches (cm) |
|---------------------------------|-------------------------------|------------------------------|-------------------------------|-------------------------------|
| All Fabric Styles except Cocoon | 20 (50.8) | 144 (365.8)† | 9 (22.9) | 144 (365.8) |
| Cocoon | 20 (50.8) | 86 (218.5) | 9 (22.9) | 96 (243.9) |

* For all inside mount applications, 3/8" (1.0 cm) deduction is taken by the manufacturer on overall width.

† Based on fabric width

Pleated Size Considerations

| | Minimum Width* inches (cm) | Maximum Width inches (cm) | Minimum Height inches (cm) | Maximum Height inches (cm) |
|---------------------------|-------------------------------|------------------------------|-------------------------------|-------------------------------|
| 1" (2.6 cm) FashionPleat® | 18 (45.8) | 144 (365.8)† | 9 (22.9) | 96 (243.9) |
| 1" (2.6 cm) EvenPleat® | 18 (45.8) | 120 (304.8)† | 6 (15.3) | 96 (243.9) |
| 2" (5.1 cm) EvenPleat® | 20 (50.8) | 144 (365.8)† | 12 (30.5) | 120 (304.8) ** |

* For all inside mount applications, 3/8" (1.0 cm) deduction is taken by manufacturer on overall width.

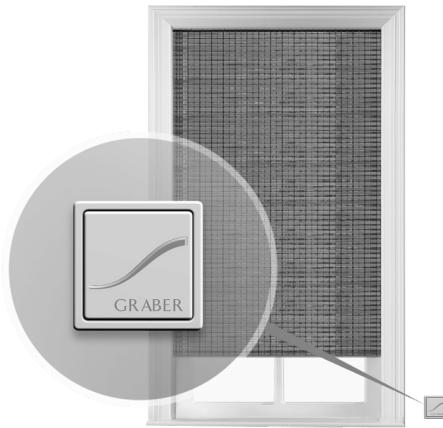
** Height limited to 96" (243.9 cm) with overlap

† Based on fabric width with overlaps



Size Considerations

Tradewinds® Natural Shades Motorized Lift



Refer to individual base price list for specific option and size information for the product being ordered.

Features

- Simple, intuitive control by means of the unique Virtual Cord (Included with every shade)
- An optional single channel remote is also available to control shades individually or in a group
- Shades can be conveniently operated from virtually anywhere in the home, up to 65 feet (19.9 m)
- Consistent motor speed regardless of size or weight
- Efficiently manages energy (heat gain and loss)
- A safer alternative to accessible cords that are traditionally used to operate window coverings; ideal for homes with children and pets
- Clean design with LED operation confirmation
- Push button control on shade end cap provides both a programming function at set-up and shade operation should the control be misplaced
- LED feedback on controls simplify operation and programming
- Quiet, smooth shade operation
- Limit safety protection feature simplifies reprogramming, should it be necessary, while protecting the shade from damage
- Convenient soft-start and soft-end add a touch of class to shade travel
- Low voltage motorization requires no costly electrical hard-wiring
- Powered with batteries or plug-in transformer or multi motor power supply
- Available on Standard Roman or Old Style Roman only
- Available with Multiple Shades on One Headrail; each panel will have a motor and power source; there will be a ½" (1.3 cm) gap between the panels
- Available with fabric edge banding, hem options and liners
- Motor mounted to the underside of wooden headrail on right side
- Not available with special shapes
- Available with bottom corner and bottom center Cut-Outs
- Not available with hold-down brackets

Control and Power Options

- Multiple control and power options available; see Virtual Cord options for availability

NOTE: Motorization components and accessories have a five-year limited warranty, excluding batteries.

Size Considerations

| Style | Minimum Width inches (cm) | Maximum Size | |
|--|------------------------------|---|--|
| | | Shade square inches (cm ²) | With Liner square inches (cm ²) |
| Inan, Lipo, Liren, Ningtu, Revelry, Serenity, Toushan II, Yunnan | 18 (45.8) | 3,312 (21,367.7) | 2,592 (16,722.6) |
| Lutan, Wuxi | 18 (45.8) | 5,328 (34,374.1) | 3,888 (25,083.8) |
| Ascot, Beikan, Chencun, Dalan | 18 (45.8) | 6,192 (39,948.3) | 4,320 (27,870.9) |
| Amour, Anyi, Boardwalk, Escape, Majian, Merino | 18 (45.8) | 7,200 (46,451.5) | 4,752 (30,658.0) |
| Beachfront, Meilin, Shatian | 18 (45.8) | 8,208 (52,954.7) | 5,184 (33,445.1) |
| Saterra, Taima, Terrestrial, Zishan | 18 (45.8) | 10,656 (68,748.3) | 6,192 (39,948.3) |

Size Considerations

Artisan Soft Shade Motorized Lift



Refer to individual base price list for specific option and size information for the product being ordered.

Features

- Simple, intuitive control by means of the unique Virtual Cord (Included with every shade)
- An optional single channel remote is also available to control shades individually or in a group
- Shades can be conveniently operated from virtually anywhere in the home, up to 65 feet (19.9 m)
- Consistent motor speed regardless of size or weight
- Efficiently manages energy (heat gain and loss)
- A safer alternative to accessible cords that are traditionally used to operate window coverings; ideal for homes with children and pets
- Clean design with an LED operation confirmation
- Push button control on shade end cap provides both a programming function at set-up and shade operation should the control be misplaced
- LED feedback on controls simplify operation and programming
- Quiet, smooth shade operation
- Limit safety protection feature simplifies reprogramming, should it be necessary, while protecting the shade from damage
- Convenient soft-start and soft-end add a touch of class to shade travel
- Low voltage motorization requires no costly electrical hard-wiring
- Powered with batteries, plug-in transformer or multi-motor power supply
- Motor mounted to the underside of wooden headrail on right side
- Not available with the following:
 - Balloon Pleat
 - Blackout Liner
 - Multiple Shades on One Headrail
- Not available with hold-down brackets

Control and Power Options

- Multiple control and power options available; see Virtual Cord options for availability

NOTE: Motorization components and accessories have a five-year limited warranty, excluding batteries.

Size Considerations

| Width | | Length | |
|---------------------|---------------------|---------------------|---------------------|
| Minimum inches (cm) | Maximum inches (cm) | Minimum inches (cm) | Maximum inches (cm) |
| 24 (61.0) | 96 (243.9) | 18 (45.8) | 120 (304.8) |

Motorized Maximum Shade Area in Square Inches

| Shade Group | 12V Motorized | |
|-------------|---|--|
| | Standard Liner square inches (cm ²) | Thermal, Premium, or Water Repellent Liners square inches (cm ²) |
| 1 | 6,912 (44,593.5) | 5,760 (37,161.2) |
| 2 | 5,472 (35,303.2) | 4,608 (29,729.0) |
| 3 | 4,608 (29,729.0) | 3,888 (25,083.8) |
| 4 | 3,744 (24,154.8) | 3,312 (21,367.7) |
| 5 | 3,168 (20,438.7) | 2,880 (18,580.6) |

NOTE: Area is ordered width x ordered height in square inches.

Example: 60" (152.4 cm) wide x 84" (213.4 cm) high = 5,040 square inches

Size Considerations

LightWeaves® Roller and Solar Shades Motorized Lift



Refer to individual base price list for specific option and size information for the product being ordered.

Features

- Simple, intuitive control by means of the unique Virtual Cord (Included with every shade)
- An optional single channel remote is also available to control shades individually or in a group
- Shades can be conveniently operated from virtually anywhere in the home, up to 65 feet (19.9 m)
- Consistent motor speed regardless of size or weight
- Efficiently manages energy (heat gain and loss)
- A safer alternative to accessible cords that are traditionally used to operate window coverings; ideal for homes with children and pets
- Clean design with LED operation confirmation
- Push button control on shade end cap provides both a programming function at set-up and shade operation should the control be misplaced
- LED feedback on controls simplify operation and programming
- Quiet, smooth shade operation
- Limit safety protection feature simplifies reprogramming, should it be necessary, while protecting the shade from damage
- Convenient soft-start and soft-end add a touch of class to shade travel
- Low voltage motorization requires no costly electrical hard-wiring
- Powered with batteries, plug-in transformer or multi-motor power supply
- Hold-down brackets not available
- Available with Standard or Reverse Roll. Cassette and Fascia Valance only available with Standard Roll
- Motor located on the left or right side; standard on the right

Control and Power Options

- Multiple control and power options available; see Virtual Cord options for availability

NOTE: Motorization components and accessories have a five-year limited warranty, excluding batteries.

| Inside Mount Light Gap | |
|------------------------------|-----------------------------------|
| Control Type | Light Gap per Side inches (cm) |
| Motorized | ½ (1.3) to 1⅜ (2.1) |
| Motorized with Cassette | ½ (1.3) to 1⅝ (2.4) |
| Dual Motorized | ⅝ (1.5) to ⅞ (2.3) |
| Dual Motorized with Cassette | ⅝ (1.5) to 1 (2.6) |

| Size Considerations | | |
|---------------------|------------------------------|-------------------------------|
| Motor Type | Minimum Width inches (cm) | Minimum Height inches (cm) |
| 12-volt | 16 (40.7) | 13 (33.1) |

NOTE: See size charts on following pages.

Size Considerations

Minimum Width: 16" (40.6 cm)
 Minimum Height: 13" (33.0 cm)

12V Motor: Maximum Shade Size

| Valance Type | Normal Fabric Orientation | | | | | | Fabric Turned Width For Height (Railroaded) | | | | | | | | | | | | | | | |
|--|---------------------------|-----------------------|----------------------|-----------------------|---|-----------------------|---|-----------------------|----------------------|-----------------------|----------------------|-----------------------|----------------------|-----------------------|---|-----------------------|----------------------|-----------------------|----------------------|-----------------------|----------------------|-----------------------|
| | Small Cassette | | Medium Cassette | | Large Cassette/ Square-corner No Valance/ No Valance | | 3" (7.7 cm) Fascia | | 4" (10.2 cm) Fascia | | Small Cassette | | Medium Cassette | | Large Cassette/ Square-corner No Valance/ No Valance | | 3" (7.7 cm) Fascia | | 4" (10.2 cm) Fascia | | | |
| | Width Inches (cm) | Height Inches (cm) | Width Inches (cm) | Height Inches (cm) | Width Inches (cm) | Height Inches (cm) | Width Inches (cm) | Height Inches (cm) | Width Inches (cm) | Height Inches (cm) | Width Inches (cm) | Height Inches (cm) | Width Inches (cm) | Height Inches (cm) | Width Inches (cm) | Height Inches (cm) | Width Inches (cm) | Height Inches (cm) | Width Inches (cm) | Height Inches (cm) | Width Inches (cm) | Height Inches (cm) |
| SheerWeave 2500 | 80 (203.2) | 101 (256.5) | 77 (195.6) | 124 (315.0) | 77 (195.6) | 124 (315.0) | 77 (195.6) | 124 (315.0) | 77 (195.6) | 124 (315.0) | 77 (195.6) | 124 (315.0) | 77 (195.6) | 124 (315.0) | 77 (195.6) | 124 (315.0) | 77 (195.6) | 124 (315.0) | 77 (195.6) | 124 (315.0) | 77 (195.6) | 124 (315.0) |
| SheerWeave 2701 | 84 (213.4) | 89 (226.1) | 79 (200.7) | 124 (315.0) | 79 (200.7) | 124 (315.0) | 79 (200.7) | 124 (315.0) | 79 (200.7) | 124 (315.0) | 84 (213.4) | 89 (226.1) | 79 (200.7) | 124 (315.0) | 84 (213.4) | 89 (226.1) | 79 (200.7) | 124 (315.0) | 84 (213.4) | 89 (226.1) | 79 (200.7) | 124 (315.0) |
| SheerWeave 2703 | 71 (180.4) | 96 (243.9) | 80 (203.2) | 122 (309.9) | 80 (203.2) | 122 (309.9) | 80 (203.2) | 122 (309.9) | 80 (203.2) | 122 (309.9) | 71 (180.4) | 96 (243.9) | 80 (203.2) | 122 (309.9) | 71 (180.4) | 96 (243.9) | 80 (203.2) | 122 (309.9) | 71 (180.4) | 96 (243.9) | 80 (203.2) | 122 (309.9) |
| SheerWeave 2705 | 86 (218.5) | 97 (246.4) | 82 (208.3) | 129 (327.7) | 82 (208.3) | 129 (327.7) | 82 (208.3) | 129 (327.7) | 82 (208.3) | 129 (327.7) | 86 (218.5) | 97 (246.4) | 82 (208.3) | 129 (327.7) | 86 (218.5) | 97 (246.4) | 82 (208.3) | 129 (327.7) | 86 (218.5) | 97 (246.4) | 82 (208.3) | 129 (327.7) |
| SheerWeave 2710 | 73 (185.5) | 113 (287.1) | 82 (208.3) | 144 (365.8) | 82 (208.3) | 144 (365.8) | 82 (208.3) | 144 (365.8) | 82 (208.3) | 144 (365.8) | 73 (185.5) | 113 (287.1) | 82 (208.3) | 144 (365.8) | 73 (185.5) | 113 (287.1) | 82 (208.3) | 144 (365.8) | 73 (185.5) | 113 (287.1) | 82 (208.3) | 144 (365.8) |
| SheerWeave 3000 | 71 (180.4) | 100 (254.0) | 80 (203.2) | 127 (322.6) | 80 (203.2) | 127 (322.6) | 80 (203.2) | 127 (322.6) | 80 (203.2) | 127 (322.6) | 71 (180.4) | 100 (254.0) | 80 (203.2) | 127 (322.6) | 71 (180.4) | 100 (254.0) | 80 (203.2) | 127 (322.6) | 71 (180.4) | 100 (254.0) | 80 (203.2) | 127 (322.6) |
| SheerWeave 4000 | 69 (175.3) | 79 (200.7) | 75 (190.5) | 118 (299.8) | 74 (188.0) | 125 (317.5) | 79 (200.7) | 94 (238.8) | 74 (188.0) | 125 (317.5) | 69 (175.3) | 79 (200.7) | 75 (190.5) | 118 (299.8) | 69 (175.3) | 79 (200.7) | 75 (190.5) | 118 (299.8) | 74 (188.0) | 125 (317.5) | 74 (188.0) | 125 (317.5) |
| SheerWeave 4100 | 70 (177.8) | 82 (208.3) | 76 (193.1) | 123 (312.4) | 76 (193.1) | 123 (312.4) | 76 (193.1) | 123 (312.4) | 76 (193.1) | 123 (312.4) | 70 (177.8) | 82 (208.3) | 76 (193.1) | 123 (312.4) | 70 (177.8) | 82 (208.3) | 76 (193.1) | 123 (312.4) | 76 (193.1) | 123 (312.4) | 76 (193.1) | 123 (312.4) |
| SheerWeave 4400 | 68 (172.7) | 77 (195.6) | 75 (190.5) | 110 (279.4) | 78 (198.2) | 91 (231.2) | 79 (200.7) | 97 (246.4) | 78 (198.2) | 91 (231.2) | 68 (172.7) | 77 (195.6) | 75 (190.5) | 110 (279.4) | 68 (172.7) | 77 (195.6) | 75 (190.5) | 110 (279.4) | 78 (198.2) | 91 (231.2) | 79 (200.7) | 97 (246.4) |
| SheerWeave 4500 | 82 (208.3) | 101 (256.5) | 79 (200.7) | 126 (320.1) | 79 (200.7) | 126 (320.1) | 79 (200.7) | 126 (320.1) | 79 (200.7) | 126 (320.1) | 82 (208.3) | 101 (256.5) | 79 (200.7) | 126 (320.1) | 82 (208.3) | 101 (256.5) | 79 (200.7) | 126 (320.1) | 79 (200.7) | 126 (320.1) | 79 (200.7) | 126 (320.1) |
| SheerWeave 4550 | 85 (215.9) | 97 (246.4) | 82 (208.3) | 122 (309.9) | 82 (208.3) | 122 (309.9) | 82 (208.3) | 122 (309.9) | 82 (208.3) | 122 (309.9) | 85 (215.9) | 97 (246.4) | 82 (208.3) | 122 (309.9) | 85 (215.9) | 97 (246.4) | 82 (208.3) | 122 (309.9) | 82 (208.3) | 122 (309.9) | 82 (208.3) | 122 (309.9) |
| SheerWeave 4600 | 67 (170.2) | 97 (246.4) | 76 (193.1) | 123 (312.4) | 76 (193.1) | 123 (312.4) | 76 (193.1) | 123 (312.4) | 76 (193.1) | 123 (312.4) | 67 (170.2) | 97 (246.4) | 76 (193.1) | 123 (312.4) | 67 (170.2) | 97 (246.4) | 76 (193.1) | 123 (312.4) | 76 (193.1) | 123 (312.4) | 76 (193.1) | 123 (312.4) |
| SheerWeave 4650 | 85 (215.9) | 93 (236.3) | 81 (205.8) | 121 (307.4) | 81 (205.8) | 121 (307.4) | 81 (205.8) | 121 (307.4) | 81 (205.8) | 121 (307.4) | 85 (215.9) | 93 (236.3) | 81 (205.8) | 121 (307.4) | 85 (215.9) | 93 (236.3) | 81 (205.8) | 121 (307.4) | 81 (205.8) | 121 (307.4) | 81 (205.8) | 121 (307.4) |
| SheerWeave 4800 | 70 (177.8) | 78 (198.2) | 75 (190.5) | 123 (312.4) | 79 (200.7) | 94 (238.8) | 75 (190.5) | 123 (312.4) | 75 (190.5) | 123 (312.4) | 70 (177.8) | 78 (198.2) | 75 (190.5) | 123 (312.4) | 70 (177.8) | 78 (198.2) | 75 (190.5) | 123 (312.4) | 75 (190.5) | 123 (312.4) | 75 (190.5) | 123 (312.4) |
| SheerWeave 7000 | 85 (215.9) | 93 (236.3) | 81 (205.8) | 120 (304.8) | 81 (205.8) | 120 (304.8) | 81 (205.8) | 120 (304.8) | 81 (205.8) | 120 (304.8) | 85 (215.9) | 93 (236.3) | 81 (205.8) | 120 (304.8) | 85 (215.9) | 93 (236.3) | 81 (205.8) | 120 (304.8) | 81 (205.8) | 120 (304.8) | 81 (205.8) | 120 (304.8) |
| SheerWeave 7100 | 76 (193.1) | 106 (269.2) | 74 (188.0) | 121 (307.4) | 74 (188.0) | 121 (307.4) | 74 (188.0) | 121 (307.4) | 74 (188.0) | 121 (307.4) | 76 (193.1) | 106 (269.2) | 74 (188.0) | 121 (307.4) | 76 (193.1) | 106 (269.2) | 74 (188.0) | 121 (307.4) | 74 (188.0) | 121 (307.4) | 74 (188.0) | 121 (307.4) |
| Sheffield (Chelsea, Henley, Meadow, Windsor) | 72 (182.9) | 143 (363.3) | 72 (182.9) | 144 (365.8) | 72 (182.9) | 144 (365.8) | 72 (182.9) | 144 (365.8) | 72 (182.9) | 144 (365.8) | 72 (182.9) | 143 (363.3) | 72 (182.9) | 144 (365.8) | 72 (182.9) | 143 (363.3) | 72 (182.9) | 144 (365.8) | 72 (182.9) | 144 (365.8) | 72 (182.9) | 144 (365.8) |
| Sheffield (Eclipse, Tuscon, Weathered) | 72 (182.9) | 82 (208.3) | 72 (182.9) | 140 (355.6) | 72 (182.9) | 112 (284.5) | 72 (182.9) | 112 (284.5) | 72 (182.9) | 144 (365.8) | 72 (182.9) | 82 (208.3) | 72 (182.9) | 140 (355.6) | 72 (182.9) | 112 (284.5) | 72 (182.9) | 144 (365.8) | 72 (182.9) | 144 (365.8) | 72 (182.9) | 144 (365.8) |
| Stratus | 84 (213.4) | 106 (269.2) | 82 (208.3) | 123 (312.4) | 82 (208.3) | 123 (312.4) | 82 (208.3) | 123 (312.4) | 82 (208.3) | 123 (312.4) | 84 (213.4) | 106 (269.2) | 82 (208.3) | 123 (312.4) | 84 (213.4) | 106 (269.2) | 82 (208.3) | 123 (312.4) | 82 (208.3) | 123 (312.4) | 82 (208.3) | 123 (312.4) |
| Suburban II | 72 (182.9) | 144 (365.8) | 72 (182.9) | 144 (365.8) | 72 (182.9) | 144 (365.8) | 72 (182.9) | 144 (365.8) | 72 (182.9) | 144 (365.8) | 72 (182.9) | 144 (365.8) | 72 (182.9) | 144 (365.8) | 72 (182.9) | 144 (365.8) | 72 (182.9) | 144 (365.8) | 72 (182.9) | 144 (365.8) | 72 (182.9) | 144 (365.8) |
| Tranquility | 73 (185.5) | 77 (195.6) | 80 (203.2) | 116 (294.7) | 79 (200.7) | 123 (312.4) | 84 (213.4) | 91 (231.2) | 79 (200.7) | 123 (312.4) | 73 (185.5) | 77 (195.6) | 80 (203.2) | 116 (294.7) | 73 (185.5) | 77 (195.6) | 80 (203.2) | 116 (294.7) | 79 (200.7) | 123 (312.4) | 84 (213.4) | 91 (231.2) |
| Twine (Driftwood, Flagstone, Jewel, Metal, Oatmeal) | 76 (193.1) | 63 (160.1) | 83 (210.8) | 97 (246.4) | 79 (200.7) | 123 (312.4) | 71 (180.4) | 87 (221.0) | 79 (200.7) | 123 (312.4) | 76 (193.1) | 63 (160.1) | 83 (210.8) | 97 (246.4) | 76 (193.1) | 63 (160.1) | 83 (210.8) | 97 (246.4) | 79 (200.7) | 123 (312.4) | 71 (180.4) | 87 (221.0) |
| Twine (Heritage) | 75 (190.5) | 82 (208.3) | 82 (208.3) | 124 (315.0) | 82 (208.3) | 124 (315.0) | 86 (218.5) | 97 (246.4) | 82 (208.3) | 124 (315.0) | 75 (190.5) | 82 (208.3) | 82 (208.3) | 124 (315.0) | 75 (190.5) | 82 (208.3) | 82 (208.3) | 124 (315.0) | 86 (218.5) | 97 (246.4) | 82 (208.3) | 124 (315.0) |
| Wicker (Brownstone, Dawn, Shell, Terracotta, Thyme, Tiger's Eye) | 74 (188.0) | 79 (200.7) | 80 (203.2) | 125 (317.5) | 84 (213.4) | 94 (238.8) | 84 (213.4) | 94 (238.8) | 80 (203.2) | 125 (317.5) | 74 (188.0) | 79 (200.7) | 80 (203.2) | 125 (317.5) | 74 (188.0) | 79 (200.7) | 80 (203.2) | 125 (317.5) | 84 (213.4) | 94 (238.8) | 84 (213.4) | 94 (238.8) |
| Wicker (Tawny) | 73 (185.5) | 74 (188.0) | 80 (203.2) | 111 (282.0) | 84 (213.4) | 88 (223.6) | 84 (213.4) | 88 (223.6) | 78 (198.2) | 124 (315.0) | 73 (185.5) | 74 (188.0) | 80 (203.2) | 111 (282.0) | 73 (185.5) | 74 (188.0) | 80 (203.2) | 111 (282.0) | 84 (213.4) | 88 (223.6) | 84 (213.4) | 88 (223.6) |

Seams may be added to fabrics to accommodate long shade requirements. Seams will be placed as close to the tube as possible; seam location is not selectable. Seams are visible when the shade is fully extended.

Size Considerations

This table provides the maximum shade size available by fabric, control type, and valance style. Only the large Cassette Valance is available for the Dual Shade. Fabric turned width for height (railroaded) may curl along its edge. This is not a defect in the product. Small and medium Cassette Valances are not available.

| Valance Type | Normal Fabric Orientation | | | | | | Fabric Turned Width For Height (Railroaded) | | | | | | | | |
|---|----------------------------------|--------------------|--|--------------------------|--------------------|--|---|--------------------|--|--------------------------|--------------------|--|---------------------------------------|--------------------|--|
| | 12V Motor No Cassette/No Valance | | | 12V Motor Large Cassette | | | 12V Motor No Cassette/No Valance at Max Width | | | 12V Motor Large Cassette | | | 12V Motor Large Cassette at Max Width | | |
| | Width inches (cm) | Height inches (cm) | | Width inches (cm) | Height inches (cm) | | Width inches (cm) | Height inches (cm) | | Width inches (cm) | Height inches (cm) | | Width inches (cm) | Height inches (cm) | |
| A100 | 73 (185.5) | 107 (271.8) | | 75 (190.5) | 95 (241.3) | | 73 (185.5) | 107 (271.8) | | 75 (190.5) | 95 (241.3) | | 75 (190.5) | 95 (241.3) | |
| A300 | 74 (188) | 92 (233.7) | | 75 (190.5) | 82 (208.3) | | 74 (188) | 92 (233.7) | | 75 (190.5) | 82 (208.3) | | 75 (190.5) | 82 (208.3) | |
| A500 | 75 (190.5) | 102 (259.1) | | 76 (193.1) | 90 (228.6) | | 75 (190.5) | 102 (259.1) | | 76 (193.1) | 90 (228.6) | | 76 (193.1) | 90 (228.6) | |
| Allure | 93 (236.3) | 121 (307.4) | | 93 (236.3) | 121 (307.4) | | 95 (241.3) | 98 (249) | | 95 (241.3) | 98 (249) | | 95 (241.3) | 98 (249) | |
| Aura (Aspen, Tweed) | 75 (190.5) | 70 (177.8) | | 77 (195.6) | 63 (160.1) | | NOT AVAILABLE | | | | | | | | |
| Aura (Poetry, Sable) | 73 (185.5) | 70 (177.8) | | 75 (190.5) | 63 (160.1) | | NOT AVAILABLE | | | | | | | | |
| B 500 | 61 (155) | 84 (213.4) | | 62 (157.5) | 76 (193.1) | | 61 (155) | 84 (213.4) | | 62 (157.5) | 76 (193.1) | | 62 (157.5) | 76 (193.1) | |
| B1000 | 71 (180.4) | 77 (195.6) | | 72 (182.9) | 71 (180.4) | | 71 (180.4) | 77 (195.6) | | 72 (182.9) | 71 (180.4) | | 72 (182.9) | 71 (180.4) | |
| Bamboo | 72 (182.9) | 84 (213.4) | | 73 (185.5) | 76 (193.1) | | 72 (182.9) | 84 (213.4) | | 73 (185.5) | 76 (193.1) | | 73 (185.5) | 76 (193.1) | |
| Brilliance | 77 (195.6) | 79 (200.7) | | 78 (198.2) | 71 (180.4) | | NOT AVAILABLE | | | | | | | | |
| Cambridge LF 76" (193.0 cm) | 77 (195.6) | 144 (365.8) | | 77 (195.6) | 144 (365.8) | | 86 (218.5) | 68 (172.8) | | 86 (218.5) | 68 (172.8) | | 86 (218.5) | 68 (172.8) | |
| Cambridge LF 92" (233.7 cm) | 92 (233.7) | 144 (365.8) | | 92 (233.7) | 144 (365.8) | | 84 (213.4) | 84 (213.4) | | 84 (213.4) | 84 (213.4) | | 84 (213.4) | 84 (213.4) | |
| Clay, Cobblestone, French Toast, Inkwell, Off White, White) | 77 (195.6) | 142 (360.7) | | 77 (195.6) | 126 (320.1) | | 80 (203.2) | 68 (172.8) | | 80 (203.2) | 68 (172.8) | | 80 (203.2) | 68 (172.8) | |
| Cambridge RD 76" (193.1 cm) | 84 (213.4) | 135 (342.9) | | 85 (215.9) | 126 (320.1) | | 77 (195.6) | 84 (213.4) | | 77 (195.6) | 84 (213.4) | | 77 (195.6) | 84 (213.4) | |
| Cambridge RD 92" (233.7 cm) | 81 (205.8) | 119 (302.3) | | 83 (210.9) | 106 (269.3) | | NOT AVAILABLE | | | | | | | | |
| Clay, Cobblestone, French Toast, Inkwell, Off White, White) | 71 (180.4) | 110 (279.4) | | 71 (180.4) | 99 (251.5) | | 84 (213.4) | 98 (249) | | 84 (213.4) | 98 (249) | | 84 (213.4) | 98 (249) | |
| Capri | 84 (213.4) | 98 (249) | | 71 (180.4) | 103 (261.7) | | 84 (213.4) | 98 (249) | | 84 (213.4) | 98 (249) | | 84 (213.4) | 98 (249) | |
| Cirrus | 74 (188) | 72 (182.9) | | 76 (193.1) | 65 (165.1) | | NOT AVAILABLE | | | | | | | | |
| Contour (Alpine) | 77 (195.6) | 59 (149.9) | | 78 (198.2) | 53 (134.7) | | NOT AVAILABLE | | | | | | | | |
| Contour (Essence, Maple, Natural, Smoke, Smudge) | 72 (182.9) | 125 (317.5) | | 72 (182.9) | 114 (289.6) | | 100 (254) | 62 (157.5) | | 100 (254) | 62 (157.5) | | 100 (254) | 62 (157.5) | |
| Crossweave | 77 (195.6) | 144 (365.8) | | 77 (195.6) | 144 (365.8) | | 86 (218.5) | 68 (172.8) | | 86 (218.5) | 68 (172.8) | | 86 (218.5) | 68 (172.8) | |
| Crystalline | 77 (195.6) | 144 (365.8) | | 77 (195.6) | 144 (365.8) | | 85 (215.9) | 68 (172.8) | | 85 (215.9) | 68 (172.8) | | 85 (215.9) | 68 (172.8) | |
| Crystalline Essence | 73 (185.5) | 84 (213.4) | | 74 (188) | 76 (193.1) | | 73 (185.5) | 84 (213.4) | | 74 (188) | 76 (193.1) | | 74 (188) | 76 (193.1) | |
| Cumulus | 85 (215.9) | 126 (320.1) | | 85 (215.9) | 112 (284.5) | | NOT AVAILABLE | | | | | | | | |
| Debut | 81 (205.8) | 119 (302.3) | | 83 (210.9) | 106 (269.3) | | NOT AVAILABLE | | | | | | | | |
| E Screen 1% | 82 (208.3) | 119 (302.3) | | 84 (213.4) | 106 (269.3) | | NOT AVAILABLE | | | | | | | | |
| E Screen 3% | 96 (241.3) | 107 (271.8) | | 79 (200.7) | 119 (302.3) | | NOT AVAILABLE | | | | | | | | |
| Elements | 70 (177.8) | 144 (365.8) | | 70 (177.8) | 144 (365.8) | | 81 (205.8) | 123 (312.5) | | 81 (205.8) | 123 (312.5) | | 81 (205.8) | 123 (312.5) | |
| Essential | | | | | | | 81 (205.8) | 123 (312.5) | | 81 (205.8) | 123 (312.5) | | 81 (205.8) | 123 (312.5) | |

Seams may be added to fabrics to accommodate long shade requirements. Seams will be placed as close to the tube as possible; seam location is not selectable. Seams are visible when the shade is fully extended.

Size Considerations

Dual Shades Maximum Shade Size

| Valance Type | Normal Fabric Orientation | | | | | | Fabric Turned Width For Height (Railroaded) | | | | | | | |
|--|----------------------------------|--------------------|--|--------------------------|--------------------|--|---|--------------------|---------------|---------------------------------------|--------------------|--|-------------|-------------|
| | 12V Motor No Cassette/No Valance | | | 12V Motor Large Cassette | | | 12V Motor No Cassette/No Valance at Max Width | | | 12V Motor Large Cassette at Max Width | | | | |
| | Width inches (cm) | Height inches (cm) | | Width inches (cm) | Height inches (cm) | | Width inches (cm) | Height inches (cm) | | Width inches (cm) | Height inches (cm) | | | |
| Eventide | 71 (180.4) | 100 (254) | | 71 (180.4) | 99 (251.5) | | 91 (231.2) | 57 (144.8) | NOT AVAILABLE | 76 (193.1) | 65 (165.1) | | 93 (236.3) | 50 (127) |
| Fern | 74 (188) | 72 (182.9) | | 76 (193.1) | 65 (165.1) | | | | NOT AVAILABLE | | | | | |
| Harmony | 92 (233.7) | 139 (353.1) | | 92 (233.7) | 139 (353.1) | | | | NOT AVAILABLE | | | | | |
| Linen (Burlap, Cream) | 78 (198.2) | 50 (127) | | 79 (200.7) | 45 (114.3) | | | | NOT AVAILABLE | | | | | |
| Fig. Topaz | 75 (190.5) | 68 (172.8) | | 77 (195.6) | 61 (155) | | | | NOT AVAILABLE | | | | | |
| M Screen 3% | 82 (208.3) | 119 (302.3) | | 84 (213.4) | 106 (269.3) | | 82 (208.3) | 119 (302.3) | | 84 (213.4) | 106 (269.3) | | 84 (213.4) | 106 (269.3) |
| M Screen 5% | 83 (210.9) | 107 (271.8) | | 85 (215.9) | 95 (241.3) | | 83 (210.9) | 107 (271.8) | | 85 (215.9) | 95 (241.3) | | 85 (215.9) | 95 (241.3) |
| Marquesa | 77 (195.6) | 59 (149.9) | | 78 (198.2) | 53 (134.7) | | | | NOT AVAILABLE | | | | | |
| Menagerie (Birch, Rockefeller) | 76 (193.1) | 61 (155) | | 78 (198.2) | 55 (139.7) | | | | NOT AVAILABLE | | | | | |
| Menagerie (Derby, Rust) | 78 (198.2) | 48 (122) | | 79 (200.7) | 43 (109.3) | | | | NOT AVAILABLE | | | | | |
| Menagerie (Haystack, Silverstone, Southern Wind) | 75 (190.5) | 74 (188) | | 76 (193.1) | 67 (170.2) | | | | NOT AVAILABLE | | | | | |
| Monaco | 77 (195.6) | 144 (365.8) | | 77 (195.6) | 144 (365.8) | | 101 (256.6) | 66 (167.7) | | 86 (218.5) | 68 (172.8) | | 101 (256.6) | 66 (167.7) |
| Monticello | 75 (190.5) | 62 (157.5) | | 77 (195.6) | 56 (142.3) | | 75 (190.5) | 62 (157.5) | | 77 (195.6) | 56 (142.3) | | 94 (238.8) | 43 (109.3) |
| Opulent | 89 (226.1) | 132 (335.3) | | 89 (226.1) | 132 (335.3) | | 92 (233.7) | 49 (124.5) | | | | | | |
| Origins | 75 (190.5) | 74 (188) | | 77 (195.6) | 67 (170.2) | | | | NOT AVAILABLE | | | | | |
| Prairie | 91 (231.2) | 122 (309.9) | | 92 (233.7) | 112 (284.5) | | | | NOT AVAILABLE | | | | | |
| Riverbend | 72 (182.9) | 82 (208.3) | | 72 (182.9) | 74 (188) | | | | NOT AVAILABLE | | | | | |
| Royalte | 72 (182.9) | 132 (335.3) | | 72 (182.9) | 119 (302.3) | | | | NOT AVAILABLE | | | | | |
| Ruijn | 72 (182.9) | 34 (86.4) | | 72 (182.9) | 30 (76.2) | | | | NOT AVAILABLE | | | | | |
| S100 S1 | 73 (185.5) | 107 (271.8) | | 75 (190.5) | 95 (241.3) | | 73 (185.5) | 107 (271.8) | | 75 (190.5) | 95 (241.3) | | 75 (190.5) | 95 (241.3) |
| S300 S1 | 74 (188) | 93 (236.3) | | 76 (193.1) | 82 (208.3) | | 74 (188) | 93 (236.3) | | 76 (193.1) | 82 (208.3) | | 76 (193.1) | 82 (208.3) |
| S500 S1 | 74 (188) | 102 (259.1) | | 76 (193.1) | 90 (228.6) | | 74 (188) | 102 (259.1) | | 76 (193.1) | 90 (228.6) | | 76 (193.1) | 90 (228.6) |
| S500 S2 | 61 (155) | 84 (213.4) | | 62 (157.5) | 76 (193.1) | | 76 (193.1) | 68 (172.8) | | 62 (157.5) | 76 (193.1) | | 77 (195.6) | 60 (152.4) |
| Scripture | 85 (215.9) | 126 (320.1) | | 85 (215.9) | 112 (284.5) | | 95 (241.3) | 74 (188) | | 95 (241.3) | 74 (188) | | 95 (241.3) | 74 (188) |
| Sedona | 72 (182.9) | 115 (292.1) | | 72 (182.9) | 104 (264.2) | | 100 (254) | 62 (157.5) | | 100 (254) | 62 (157.5) | | 100 (254) | 62 (157.5) |
| SheerWeave 1000 | 83 (210.9) | 119 (302.3) | | 74 (188) | 124 (315) | | 88 (223.6) | 119 (302.3) | | 88 (223.6) | 119 (302.3) | | 88 (223.6) | 106 (269.3) |
| SheerWeave 2000 | 79 (200.7) | 126 (320.1) | | 81 (205.9) | 112 (284.5) | | 79 (200.7) | 126 (320.1) | | 81 (205.9) | 112 (284.5) | | 81 (205.9) | 112 (284.5) |
| SheerWeave 2100 | 82 (208.3) | 119 (302.3) | | 84 (213.4) | 106 (269.3) | | 82 (208.3) | 119 (302.3) | | 84 (213.4) | 106 (269.3) | | 84 (213.4) | 106 (269.3) |
| SheerWeave 2360 | 82 (208.3) | 142 (360.7) | | 84 (213.4) | 126 (320.1) | | 82 (208.3) | 142 (360.7) | | 84 (213.4) | 126 (320.1) | | 84 (213.4) | 126 (320.1) |
| SheerWeave 2390 | 82 (208.3) | 129 (327.7) | | 82 (208.3) | 126 (320.1) | | 82 (208.3) | 129 (327.7) | | 82 (208.3) | 126 (320.1) | | 82 (208.3) | 126 (320.1) |
| SheerWeave 2390 Performance Plus | 82 (208.3) | 129 (327.7) | | 83 (210.9) | 119 (302.3) | | 82 (208.3) | 129 (327.7) | | 83 (210.9) | 119 (302.3) | | 83 (210.9) | 119 (302.3) |
| SheerWeave 2410 | 80 (203.2) | 121 (307.4) | | 81 (205.8) | 112 (284.5) | | 80 (203.2) | 121 (307.4) | | 81 (205.8) | 112 (284.5) | | 81 (205.8) | 112 (284.5) |
| SheerWeave 2410 Performance Plus | 80 (203.2) | 121 (307.4) | | 81 (205.8) | 112 (284.5) | | 80 (203.2) | 121 (307.4) | | 81 (205.8) | 112 (284.5) | | 81 (205.8) | 112 (284.5) |

Seams may be added to fabrics to accommodate long shade requirements. Seams will be placed as close to the tube as possible; seam location is not selectable. Seams are visible when the shade is fully extended.

Size Considerations

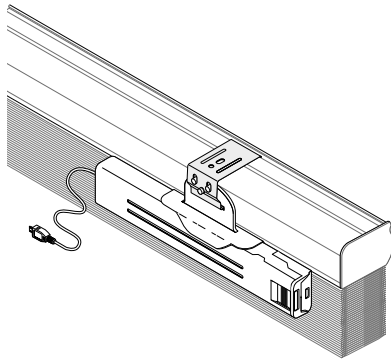
Dual Shades Maximum Shade Size

| Valance Type | Normal Fabric Orientation | | | | | | Fabric Turned Width For Height (Railroaded) | | | | | | | | |
|---|----------------------------------|--------------------|--|--------------------------|--------------------|--|---|--------------------|--|--------------------------|--------------------|--|---------------------------------------|--------------------|--|
| | 12V Motor No Cassette/No Valance | | | 12V Motor Large Cassette | | | 12V Motor No Cassette/No Valance | | | 12V Motor Large Cassette | | | 12V Motor Large Cassette at Max Width | | |
| | Width inches (cm) | Height inches (cm) | | Width inches (cm) | Height inches (cm) | | Width inches (cm) | Height inches (cm) | | Width inches (cm) | Height inches (cm) | | Width inches (cm) | Height inches (cm) | |
| SheerWeave 2500 | 81 (205.8) | 98 (249) | | 83 (210.9) | 86 (218.5) | | 81 (205.8) | 98 (249) | | 83 (210.9) | 86 (218.5) | | 83 (210.9) | 86 (218.5) | |
| SheerWeave 2701 | 85 (215.9) | 85 (215.9) | | 71 (180.4) | 92 (233.7) | | 85 (215.9) | 85 (215.9) | | 71 (180.4) | 92 (233.7) | | 87 (221) | 75 (190.5) | |
| SheerWeave 2703 | 71 (180.4) | 96 (243.9) | | 72 (182.9) | 90 (228.6) | | 86 (218.5) | 82 (208.3) | | 72 (182.9) | 90 (228.6) | | 88 (223.6) | 72 (182.9) | |
| SheerWeave 2705 | 72 (182.9) | 106 (269.3) | | 72 (182.9) | 104 (264.2) | | 87 (221) | 93 (236.3) | | 72 (182.9) | 104 (264.2) | | 89 (226.1) | 82 (208.3) | |
| SheerWeave 2710 | 73 (185.5) | 113 (287.1) | | 74 (188) | 104 (264.2) | | 73 (185.5) | 113 (287.1) | | 74 (188) | 104 (264.2) | | 91 (231.2) | 82 (208.3) | |
| SheerWeave 3000 | 71 (180.4) | 100 (254) | | 72 (182.9) | 91 (231.2) | | 71 (180.4) | 100 (254) | | 72 (182.9) | 91 (231.2) | | 89 (226.1) | 72 (182.9) | |
| SheerWeave 4000 | 70 (177.8) | 75 (190.5) | | 71 (180.4) | 69 (175.3) | | 70 (177.8) | 75 (190.5) | | 71 (180.4) | 69 (175.3) | | 88 (223.6) | 54 (137.2) | |
| SheerWeave 4100 | 71 (180.4) | 77 (195.6) | | 72 (182.9) | 71 (180.4) | | 71 (180.4) | 77 (195.6) | | 72 (182.9) | 71 (180.4) | | 89 (226.1) | 56 (142.3) | |
| SheerWeave 4400 | 69 (175.3) | 74 (188) | | 70 (177.8) | 67 (170.2) | | 69 (175.3) | 74 (188) | | 70 (177.8) | 67 (170.2) | | 87 (221) | 82 (208.3) | |
| SheerWeave 4500 | 83 (210.9) | 98 (249) | | 85 (215.9) | 86 (218.5) | | 83 (210.9) | 98 (249) | | 85 (215.9) | 86 (218.5) | | 85 (215.9) | 86 (218.5) | |
| SheerWeave 4550 | 71 (180.4) | 108 (274.4) | | 72 (182.9) | 101 (256.6) | | 71 (180.4) | 108 (274.4) | | 72 (182.9) | 101 (256.6) | | 88 (223.6) | 82 (208.3) | |
| SheerWeave 4600 | 68 (172.8) | 94 (238.8) | | 70 (177.8) | 83 (210.9) | | 68 (172.8) | 94 (238.8) | | 70 (177.8) | 83 (210.9) | | 86 (218.5) | 67 (170.2) | |
| SheerWeave 4650 | 71 (180.4) | 101 (256.6) | | 71 (180.4) | 99 (251.5) | | 71 (180.4) | 101 (256.6) | | 71 (180.4) | 99 (251.5) | | 88 (223.6) | 79 (200.7) | |
| SheerWeave 4800 | 70 (177.8) | 76 (193.1) | | 71 (180.4) | 69 (175.3) | | 70 (177.8) | 76 (193.1) | | 71 (180.4) | 69 (175.3) | | 88 (223.6) | 54 (137.2) | |
| SheerWeave 7000 | 71 (180.4) | 100 (254) | | 71 (180.4) | 99 (251.5) | | 71 (180.4) | 100 (254) | | 71 (180.4) | 99 (251.5) | | 88 (223.6) | | |
| SheerWeave 7100 | 77 (195.6) | 102 (259.1) | | 79 (200.7) | 90 (228.6) | | 77 (195.6) | 102 (259.1) | | 79 (200.7) | 90 (228.6) | | 88 (223.6) | | |
| Sheffield (Chelsea, Henley, Meadow, Windsor) | 72 (182.9) | 138 (350.6) | | 72 (182.9) | 125 (317.5) | | 72 (182.9) | 138 (350.6) | | 72 (182.9) | 125 (317.5) | | 101 (256.6) | 62 (157.5) | |
| Stratus | 72 (182.9) | 79 (200.7) | | 72 (182.9) | 71 (180.4) | | 72 (182.9) | 79 (200.7) | | 72 (182.9) | 71 (180.4) | | 86 (218.5) | 56 (142.3) | |
| Stratus II | 85 (215.9) | 102 (259.1) | | 71 (180.4) | 109 (276.9) | | 85 (215.9) | 102 (259.1) | | 71 (180.4) | 109 (276.9) | | 102 (259.1) | 90 (228.6) | |
| Suburban II | 72 (182.9) | 144 (365.8) | | 72 (182.9) | 144 (365.8) | | 72 (182.9) | 144 (365.8) | | 72 (182.9) | 144 (365.8) | | 87 (221) | 62 (157.5) | |
| Tranquility | 74 (188) | 74 (188) | | 75 (190.5) | 67 (170.2) | | 74 (188) | 74 (188) | | 75 (190.5) | 67 (170.2) | | 101 (256.6) | 62 (157.5) | |
| Twine (Driftwood, Flagstone, Jewel, Metal, Oatmeal) | 76 (193.1) | 61 (155) | | 78 (198.2) | 55 (139.7) | | 76 (193.1) | 61 (155) | | 78 (198.2) | 55 (139.7) | | 92 (233.7) | 52 (132.1) | |
| Twine (Heritage) | 75 (190.5) | 79 (200.7) | | 77 (195.6) | 71 (180.4) | | 75 (190.5) | 79 (200.7) | | 77 (195.6) | 71 (180.4) | | 88 (223.6) | | |
| Wicker (Brownstone, Dawn, Tiger's Eye) | 74 (188) | 76 (193.1) | | 76 (193.1) | 69 (175.3) | | 74 (188) | 76 (193.1) | | 76 (193.1) | 69 (175.3) | | 93 (236.3) | 54 (137.2) | |
| Wicker (Tawny) | 73 (185.5) | 72 (182.9) | | 75 (190.5) | 65 (165.1) | | 73 (185.5) | 72 (182.9) | | 75 (190.5) | 65 (165.1) | | 92 (233.7) | 50 (127) | |

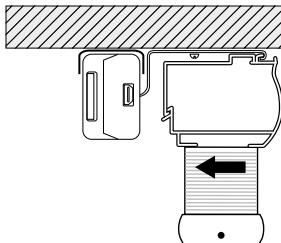
Seams may be added to fabrics to accommodate long shade requirements. Seams will be placed as close to the tube as possible; seam location is not selectable. Seams are visible when the shade is fully extended.

Virtual Cord™ Options

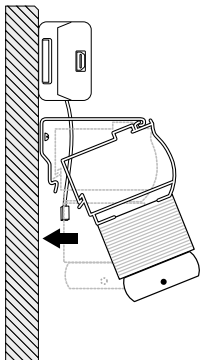
12-Volt Power Considerations



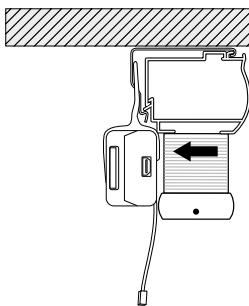
**Cellular and Pleated
Battery Consideration**



Ceiling/Inside Mount



Outside Mount



Inside Mount

Motors can be powered by batteries, plug-in transformer or multi-motor power supply. Each shade requires a motor and appropriate power source.

Power Considerations

Larger shades consume more power while operating. When choosing the appropriate power source based upon the shade size we recommend the following power sources for the best performance.

| Shade Size square inches (cm ²) | Recommended Power Source |
|--|---|
| 0 – 3,600 (0 – 23,225.8) | Batteries (single or dual), plug-in or multi-motor power supply |
| 3,600 – 7,200 (23,225.8 – 46,451.5) | Dual battery cases, plug-in or multi-motor power supply |
| 7,200 (46,451.5) | Plug-in or multi-motor power supply only |

Dual Battery Cases are recommended for larger shades (over 3,600 sq. in. (23,225.8 cm²)) to extend battery life.

Transformer power is recommended for larger shades (over 7,200 sq. in. (46,451.7 cm²)) to provide the best experience with regular shade operation.

Battery Case Considerations

Battery cases are installed outside of the product and can be a challenge to hide in some windows.

For Inside Mounts:

- The cleanest and simplest method available for cellular and pleated shades is the integrated battery case hanger. This hanger attaches directly to a shade bracket to support the battery case while allowing the case to be removed for battery changes. Additional recessed space will be needed

For Outside Mounts:

- For outside mounts, battery cases can be installed above or to the side of the shade

NOTE: For best performance, use only AA lithium batteries.

Battery Case dimensions: 9¼" (23.5 cm) x 1¼" (3.2 cm) x ⅞" (2.3 cm)

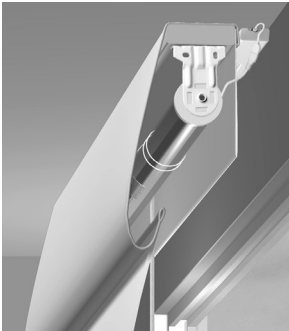
Dual Battery Cases installed end-to-end: require 21" (53.4 cm) of space (including connectors)

Battery Case minimum recessed space (installed with bracket): Product minimum recessed space + ¾" (2.0 cm)

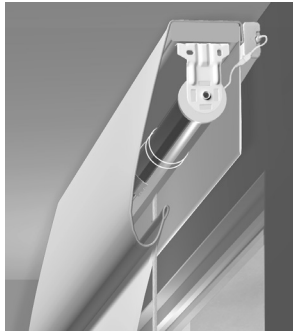
Virtual Cord™ Options

12-Volt Power Considerations

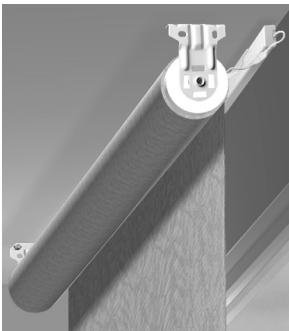
Solar/Roller, Natural Shades, Artisan Shade Battery Considerations



Soft/Natural Shades
Battery Case
Mounted Behind



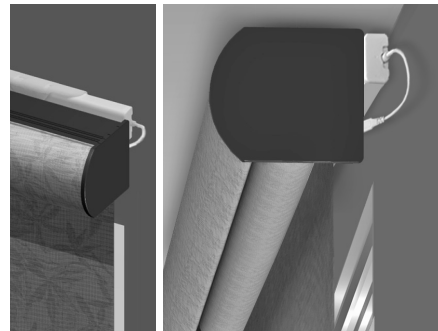
Soft/Natural Shades
Battery Case
Mounted on Headrail



Solar Shades
Outside Mount
Battery Pack



Solar Shades
Inside Mount
Battery Pack



Solar Shades
With Cassette
Battery Pack

DC Plug-in Transformer Considerations

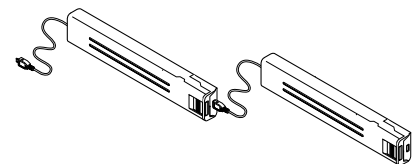
A power outlet must be within cord length to power motor.

Transformer includes 72" (182.9 cm) power cord and a 96" (243.9 cm) extension cable (power cord cannot be cut to length or trimmed).

A transformer is recommended on all shades over 7,200 sq. in. (46,451.5 cm²).

Transformer Dimensions

4" (10.2 cm) Wide x 2" (5.1 cm) Deep (not including plug) x 1½" (3.9 cm) Tall (as you look at the plug in the outlet).



Dual Battery Cases

Multi-Motor Power Supply Considerations

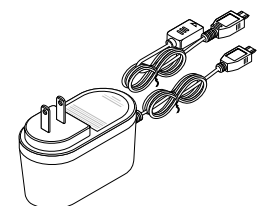
Transformer enclosure is generally mounted in an accessible indoor location such as a basement, utility closet or garage. Motors are "home run" wired to the panel using 16-gauge wire.

CAUTION: A licensed electrician is required for all line voltage electrical connections. All local and NEC codes must be followed.

12 Volt: 8-motor power supply available for all Cellular and Pleated Shades, includes connectors.

12 Volt: 10-motor power supply available for all Solar, Roller, Natural and Soft Shades, includes connectors.

Dimensions: 12" (30.5 cm) Wide x 6" (15.3 cm) Deep x 12" (30.5 cm) High.

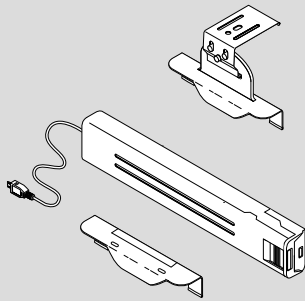


DC Plug-in Transformer

Virtual Cord™ Options

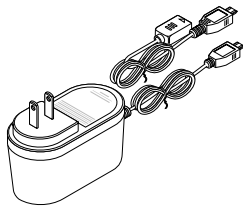
12-Volt Power Components

NOTE: These power supplies are not compatible with Somfy RTS Motors.



Battery Case

- Reloadable: available with or without batteries
- Multiple mounting options provided
- Simple case design allows for easy battery replacement
- Recommend shades greater than 3,600 sq. in. (23,225.8 cm²) utilize two single battery cases (dual cases) to extend battery life
- Shades exceeding 7,200 sq. in. (46,451.5 cm²) we recommend a plug-in transformer
- For best performance, use only AA lithium batteries (each case requires 8 AA lithium batteries)



Plug-in Transformer

- Eliminates the need for batteries
- Small plug profile
- Cord can be concealed behind curtains or along trim
- 72" (182.9 cm) power cord and 96" (243.9 cm) extension cable (Power cord and extensions cannot be cut to length)
- We recommend shades (Cellular and Pleated Shades) greater than 7,200 sq. in. (46,451.5 cm²) utilize a transformer to eliminate changing batteries frequently
- Available in White only

Transformer Dimensions

4" (10.2 cm) Wide x 2" (5.1 cm) Deep (not including plug) x 1½" (3.8 cm) Tall (as you look at the plug in the outlet)



Multi-motor Power Supply

- Used when direct wiring the motorized window coverings
- Each motor is 'home run' wired back to the multi-motor power supply
- Power Supply includes connectors
- Must be mounted indoors
- Dimensions: 12" (30.5 cm) Wide x 6" (15.3 cm) Deep x 12" (30.5 cm) High

12-Volt motors:

- Solar/Roller, Natural and Soft Shades: Up to 10 motors per power supply
- Cellular, Pleated: Up to 8 motors per power supply

Radio Frequency Controls

NOTE: These controls are not compatible with Somfy RTS Motors.



Virtual Cord™ (included with every shade)

The Virtual Cord is meant to control an individual shade (one to one). This helps assure simple, reliable control as well as simplifying the process of readjusting pre-set positions should it become necessary – without removing power from adjacent shades. However, the Virtual Cord can be paired to multiple shades to provide group control.

- Includes convenient mounting hardware
- Battery Included
- Available in White



Single Channel Remote

- Used to control single shades or a group of shades simultaneously
- Set and use an intermediate position for your shades
- Includes convenient mounting hardware
- Battery Included
- Available in White

Pricing Chart and Option Pricing

Low Voltage Radio Frequency

See options section for illustrations of power and control items listed below. Select motor package and add to price of shade.

Motor Package Pricing: Includes Motor, Power Source and Virtual Cord™ Control

| | |
|---|-------|
| Filled Single battery case (includes 8AA Lithium batteries) and Virtual Cord™ control | \$529 |
| Unfilled Single battery case and Virtual Cord™ control | \$471 |
| Plug-In Transformer with 72" (182.9 cm) power cord and 96" (243.9 cm) extension cable and Virtual Cord™ control | \$529 |
| Dual cases recommended for shades over 3,600 sq. in. (23,225.8 cm ²) to extend battery life. | |
| Filled Dual battery case and Virtual Cord™ control | \$629 |
| Unfilled Dual battery case and Virtual Cord™ control | \$512 |

Direct Wiring Motors to Multi-Motor Power Supply

| | |
|--|--------|
| Motor and Virtual Cord Only | \$430 |
| Multi-Motor Power Supply <ul style="list-style-type: none"> Cellular, Pleated: Up to 8 motors per power supply Solar/Roller, Natural Shades, Soft Shades: Up to 10 motors per power supply | \$1020 |

Optional Control

| | |
|-----------------------|-------|
| Single Channel Remote | \$102 |
|-----------------------|-------|

Optional Replacement Controls and Installation Accessories

| | |
|--|--------|
| Virtual Cord™ Control | \$81 |
| Unfilled Single battery case | \$41 |
| Plug-in Transformer with 72" (182.9 cm) power cord and 96" (243.9 cm) Extension Cable | \$99 |
| Multi-Motor Power Supply <ul style="list-style-type: none"> Cellular, Pleated: Up to 8 motors per power supply Solar/Roller, Natural Shades, Soft Shades: Up to 10 motors per power supply | \$1020 |
| 48" (122.0 cm) Extension Cable | \$18 |
| 96" (243.9 cm) Extension Cable | \$22 |



Graber is a brand of Springs Window Fashions, the Best Experience Company 

Graber and the Graber logo are registered trademarks of Springs Window Fashions, LLC.