

BEN SHAFFER RECREATION INC.

Serving New Jersey since 1921

PARK, PLAYGROUND & STREETScape SOLUTIONS

P. O. Box 844

Lake Hopatcong, NJ 07849

1-800-953-2021

sales@benshaffer.com

www.benshaffer.com

VICTOR STANLEY RELAY™

STREET LEVEL SENSING™ & WASTE CONTROL SERVICE



Sage receptacle: patents pending.

An orderly revolution in waste control.

VICTOR  STANLEY®

CONTAINER 162
CONTENTS
GENERAL WASTE

150 NEWBURY STREET,
BOSTON, MA
LAT. 42.350781
LON. -71.077917

LAST COLLECTED
7/20/2016

90% CAPACITY
48 LBS
COLLECTION
REQUIRED

AVG. TIME BETWEEN
COLLECTIONS
2-DAYS

60% CAPACITY
30 LBS

BATTERY LEVEL
100%

10% CAPACITY
5 LBS

SIGNAL STRENGTH
97%

INCREASED
EFFICIENCY
40%



Sage receptacle: patents pending.

INTRODUCING VICTOR STANLEY RELAY™

Most current waste and recycling collection systems follow a static model, where containers are picked up regardless of their content or fill level.

This inefficiency has an impact on monetary, environmental, and community costs, with some containers overflowing before they are collected, while others sit empty, yet are picked up anyway. There wasn't a better way, so we created one.

Victor Stanley Relay™ modernizes this system by monitoring the fill levels and weights of all containers, so that they can be collected at the optimal time. This service saves on collection expenses and ensures resources are allocated efficiently, while reducing fuel costs, carbon footprints, and unsightly overflowing waste.

Customers pay a small monthly subscription fee. Yearly and multi-year subscriptions are available.

HIGHLIGHTS

- Efficient resource allocation saves an estimated 20-40% in collection expenses
- Elimination of overflowing improves aesthetic appeal and community satisfaction
- Optimization of collection fleet reduces fuel waste, traffic congestion, and environmental impact
- Monitoring of containers provides holistic view of an area's trash and recycling status and improves landfill diversion rates

COMMUNICATIONS EXPERT



VICTOR STANLEY STREET LEVEL SENSING™

An all-in-one solution, Victor Stanley Relay™ features fully integrated sensors within new and existing Victor Stanley litter receptacles and recycling stations, wireless communications, and dedicated web portal for access to container conditions.

Utilizing our 54-years of experience, we designed our proprietary Street Level Sensing™ technology to meet the challenges site furnishings face in high-use, commercial and urban environments at the street level. This means that fill level, weight, system temperature, container location, and collection status are continuously monitored — and real-time container conditions are automatically transmitted to the Victor Stanley Relay™ Service using standard cellular networks.

To maintain aesthetics, Victor Stanley Relay™ Sensors can be hidden within any Victor Stanley side loading litter receptacle or recycling station. But smart design is only part of the story because our sensors are designed and built to remain reliable and accurate even in harsh environmental conditions. And they work with any type of waste (general trash, mixed recyclables, paper, glass, metals, etc.) while remaining out of sight, economical, and ecologically friendly.

VICTOR STANLEY RELAY™ SERVICE

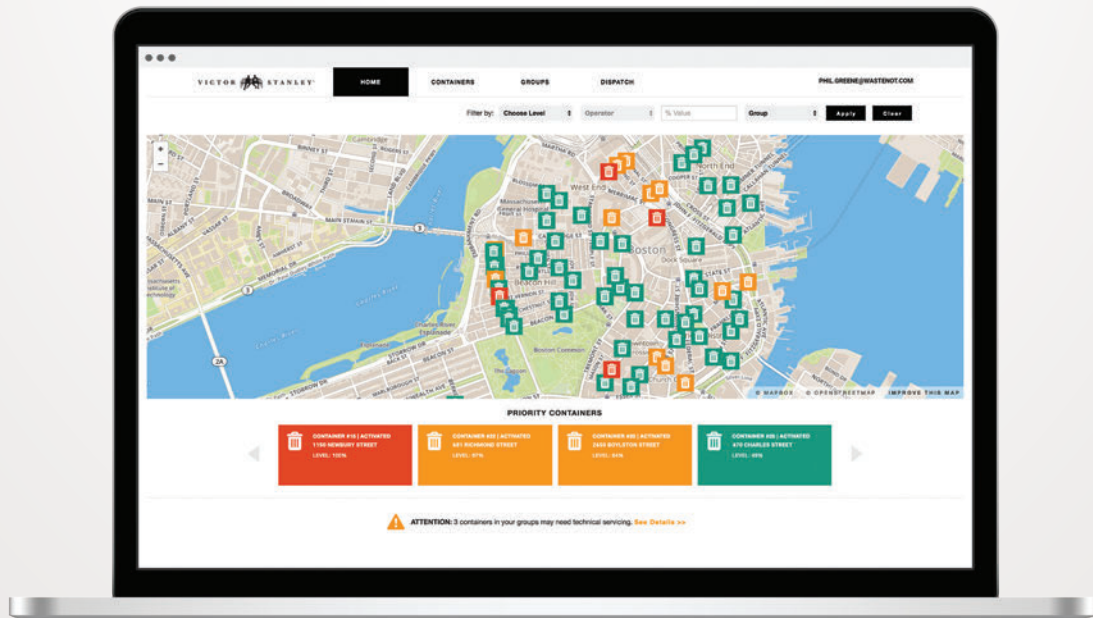
The onboard GPS module provides longitude and latitude coordinates of each container and communicates its location to the Victor Stanley Relay™ Service. In turn, our geocoding service automatically looks up the container's current street address and updates its location. This saves time, money and aggravation when relocating containers for special events or reassignment.

Efficiencies include:

- Elimination of wasteful fixed collection routing
- Reduced fuel costs, resource costs, and CO₂ emissions
- Increased environment livability and community satisfaction
- Users can check real-time status of containers
- Customizable alert triggers and push notifications can be set to receive information regarding fill level spikes, container location, collection status and dispatch reporting
- Real-time and historical information to maximize collection planning, scheduling, routing and resource utilization
- Access from anywhere through any device (via web portal) including web browser, smartphone, tablet, etc.

VICTOR STANLEY RELAY™ PORTAL

The Victor Stanley Relay™ Service is powerful and easy to use. Online demos are available upon request; please email relay@victorstanley.com for more details.



The dashboard features a navigation bar with 'HOME', 'CONTAINERS', 'GROUPS', and 'DISPATCH'. The user is logged in as PHIL.GREENE@WASTENOT.COM. A filter bar allows selection by 'Choose Level', 'Operator', and '% Value'. The main map displays various container locations in Boston, color-coded by priority. Below the map, a 'PRIORITY CONTAINERS' section lists four containers with their activation status and levels:

Container ID	Status	Address	Level
CONTAINER #15	ACTIVATED	1150 NEWBURY STREET	100%
CONTAINER #22	ACTIVATED	681 RICHMOND STREET	67%
CONTAINER #20	ACTIVATED	2650 BOYLSTON STREET	64%
CONTAINER #25	ACTIVATED	470 CHARLES STREET	49%

An attention alert states: "ATTENTION: 3 containers in your groups may need technical servicing. See Details >>"

DASHBOARD

Identify high-priority containers and pressing issues at a glance.

The 'GROUPS' page includes a navigation bar with 'HOME', 'CONTAINERS', 'GROUPS', and 'DISPATCH'. The user is logged in as PHIL.GREENE@WASTENOT.COM. The page is titled 'ADD / EDIT USERS' and features a dropdown menu with options: 'Add/Edit Groups', 'Add Container To Group', and 'Add/Edit Users'. Below the menu, there is a section for 'Add a New User' with a list of existing users:

- Phil Greene | Greene Group, Weekend Group A
- Dave Campbell | Campbell Group, Weekend Group B
- Ed Weiss | Weiss Group
- Jordan Roberts | Roberts Group

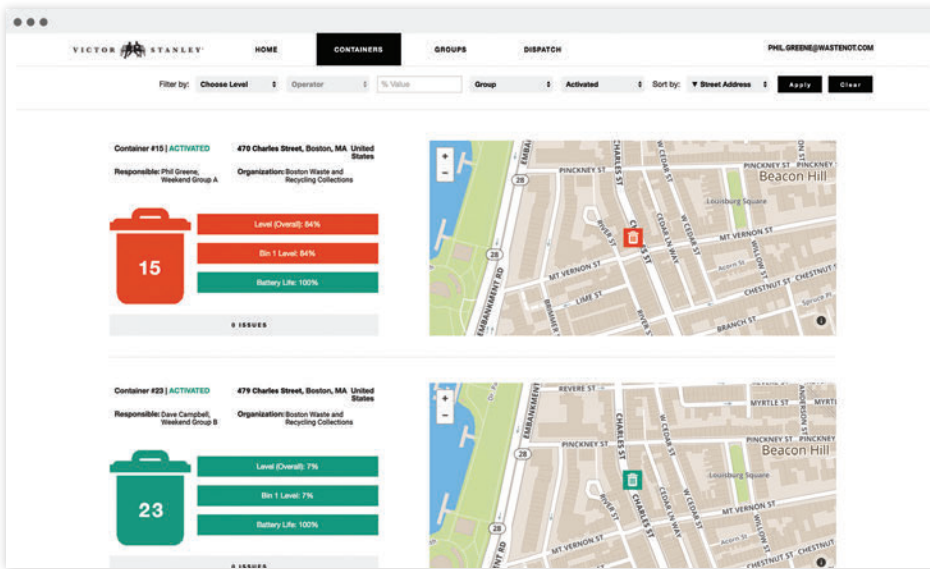
On the left, there is a form for adding or editing a user with the following fields:

- Group: [Dropdown menu with options: Greene Group, Campbell Group, Weiss Group, Roberts Group, Weekend Group A, Weekend Group B]
- First Name: Phil
- Last Name: Greene
- Title: Litter Foreman
- Email: phil.greene@wastenot.com
- Phone: 617-635-1202

An 'APPLY' button is located at the bottom of the form.

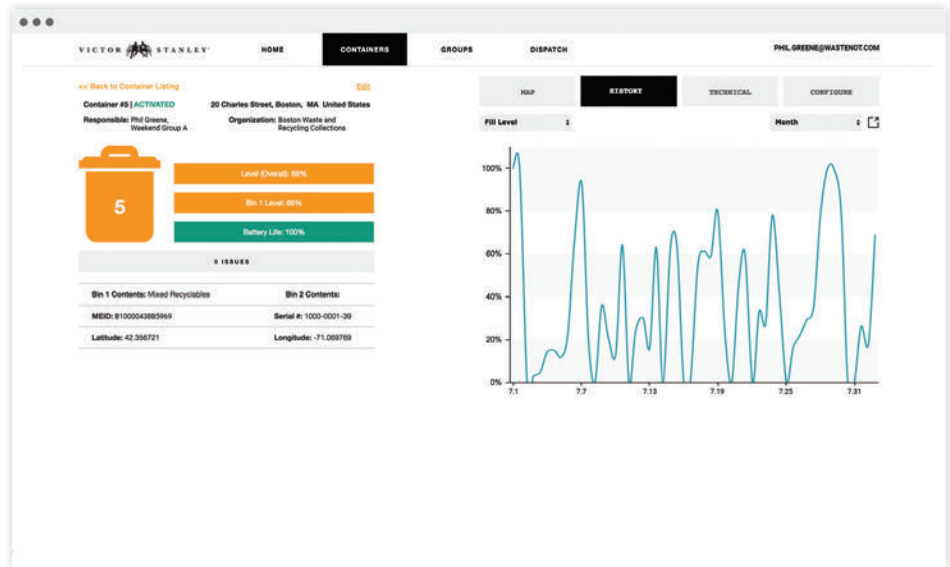
GROUPS

Manage user details and assign users and containers to groups for easy organization and reference.



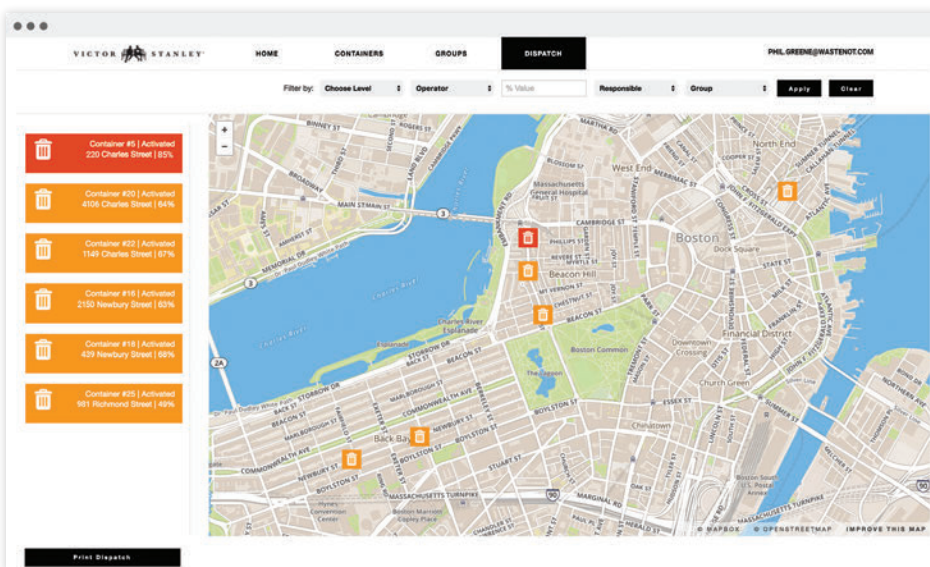
CONTAINER SEARCH

View listings of individual container details with filters to isolate variables and narrow your search quickly.



CONTAINER DETAILS

Dive deeper with current and historical data as well as technical details for each receptacle.



DISPATCH

Plan pickup routes and immediately dispatch notifications to relevant parties with the click of a button.

TECHNICALLY SPEAKING, IT'S GOT EVERYTHING

	CCS-200SCL	CCS-210SCLW	CCS-220DCL	CCS-230DCLW	CCS-300SCW	CCS-310DCW
Cellular	Yes	No	Yes	No	Yes	No
GPS	Yes	No	Yes	No	Yes	No
Geocoding	Yes	No	Yes	No	Yes	No
Fill Level Sensing	Yes	No	Yes	No	No	No
Smart Power Supply	Yes	No	Yes	No	Yes	No
Multi-use	No	No	Yes	No	No	No
Battery Level	Yes	No	Yes	No	Yes	No
Estimated Weight	Yes	No	Yes	No	No	No
Actual Weight Sensing	No	No	No	No	Yes	No
Usage	Yes	No	Yes	No	Yes	No

Model	Package and Compatibility	Example
CCS-200SCL	(1) Container (1) Wireless Device (1) Fill Level Sensor (1) Relay Subscription	SD-42 with fill level sensing and Relay Service
CCS-210SCLW	(1) Container (1) Wireless Device (1) Fill Level Sensor (1) Weight Sensor (1) Relay Subscription	SD-42 with fill level, weight sensing and Relay Service
CCS-220DCL	(2) Containers (1) Wireless Device (2) Fill Level Sensors (1) Relay Subscription	SD-242 with fill level and Relay Service
CCS-230DCLW	(2) Containers (2) Wireless Devices (2) Fill Level Sensors (2) Weight Sensors (2) Relay Subscriptions	SD-242 with fill level, weight sensing, and Relay Service
CCS-300SCW	(1) Container (1) Wireless Device (1) Weight Sensor (1) Relay Subscription	S-42 with weight sensing and Relay Service
CCS-310DCW	(2) Containers (1) Wireless Device (2) Weight Sensors (1) Relay Subscription	DYN-242 with weight sensing and Relay Service
Others	Compatible with dual stream litter receptacles and recycling stations	SD-42 with split liner configuration (1) litter & (1) recyclables

But don't worry, we will configure the right solution for you...



SD-42



Sage Dual: patents pending.



SDC-36



SD-242



A-36: US Patents D483,538 S; D487,537 S; D487,538 S; D487,177 S.

Worldwide W-CDMA (UMTS) and GPRS/EDGE coverage

Onboard GPS module for concurrent reception of up to 3 GNSS (GPS, Galileo, GLONASS, BeiDou), for accurate geolocation and automatic address entry and updates

Automatic address lookups and record updates

Proprietary Victor Stanley Street Level Sensing™ technology – current and historic container fill levels

Self-contained and managed

Single wireless device, single service fee – even for dual container litter receptacles and recycling stations

Battery life display with low percentage indicator

Estimated container weight based on historical data and waste stream type

Proprietary Victor Stanley Street Level Sensing™ technology with integrated weight sensor for measured weight ± 5 lbs (2.27 kg)

Outdoors, high-use, commercial, and urban environments. Indoors, courtyards, mixed-use developments, etc.

PHYSICAL CHARACTERISTICS

- Stealthy designed enclosure hidden within and compatible with Victor Stanley side loading litter receptacle or recycling station dome, rain bonnet, spherical dome, canopy (i.e. A-24, A-36), solid convex lid (i.e. SDC-24, SDC-36, RSDC-24, RSDC-36). All Sage litter receptacles and recycling stations come standard with Victor Stanley Relay™ Sensor built in with a trial period of the Relay Service.
- Tamper resistant hardware
- 16-gauge spun sheet metal
- 1/8” ABS enclosure cover
- Flame retardant ABS device enclosure
- 1/8” abrasion resistant acrylic sensor cover
- Waterproof gasket
- All fabricated metal components are steel shotblasted, etched, phosphatized, preheated and electrostatically powder-coated with TGIC polyester powder coatings
- Environmental – IP Rating: IP 67 (Dust Tight & Immersion). Operational Temperature (ambient):
 - Typical: -10°F to +110°F (-23°C to +43°C)
 - Rated: -40°F to +140°F (-40°C to +60°C)
 - Environmental Chamber Tested: -40°F to +122°F (-40°C to +50°C)

FEATURES

- Continuously and automatically monitors fill level, weight, location, system temperature, and collection status
- Provides real-time and historical information for analysis and efficient dispatching
- Relay is hosted on a scalable, secure, resilient, and redundant Internet of Things (IoT) specific enterprise-grade cloud computing platform
- Monitors any waste stream – solids, recyclables, etc.
- Zero maintenance
- No installation required
- Off the shelf, economical and easily replaceable Lithium/Iron Disulfide batteries offering superior performance in extreme temperatures
- Additional data access via APIs, JSON, CSV, Excel, XML, and others
- Data access from anywhere and any device via the Victor Stanley Relay™ web portal
- Identity and access management
- Dual container compatible – In certain configurations, one wireless device is capable of monitoring dual container litter and recycling stations while requiring only one Relay service fee. See Package and Compatibility matrix for details.
- Automatically transmits and updates container location when relocated
- Self-contained power supply with an estimated life of 6+ years (typical use monitors once per hour and reports twice daily on average). Battery life may vary depending on configuration, transmission frequency, wireless signal strength and temperature. See battery life expectancy matrix below for further details
- Wireless remote configuration and software updates
- Wireless communications and push notification alerts
- Data can be captured and analyzed to improve efficiencies and operational results

BATTERY LIFE EXPECTANCY

Environmental		Configuration					Battery
Ambient Temperature (Avg.)	Wireless Signal Strength (Avg.)	Configuration	Readings (Avg. Per Day)	Reporting (Avg. Per Day)	GPS Usage (Avg. Per Activation)	GPS Usage (Avg. Per Year)	Life Expectancy* (Years)
-10°F to +110°F (-23°C to +43°C)	90% to 100%	A	24	1	1	1	10
		B	24	2	1	1	6-3/4
		C	24	3	1	1	4-1/2
		D	24	4	1	1	3-1/2
		E	24	5	1	1	2-3/4
		F	24	6	1	1	2-1/4

*All battery claims depend on the cellular network, location, signal strength, environment, configuration, usage, 10% battery manufacturer defect rate, and many other factors; actual results will vary. This document contains typical information specific to products manufactured at the time of its publication for reference only. Contents herein do not constitute a warranty.

*Information and specifications are subject to change without notice

JUST LIKE THAT, YOU'RE IN BUSINESS

ACTIVATION

Victor Stanley Relay™ Sensors come fully integrated with any Victor Stanley side loading litter receptacle or recycling station and are ready to be activated once the container has been anchored on site.

Activation of the Relay Service is performed by simply waving the provided magnetic fob over the activation indicator at the center of the sensor. Activation confirmation can be done in the field using any internet connected smartphone or mobile device.





VICTOR STANLEY RELAY™

STREET LEVEL SENSING™ & WASTE CONTROL SERVICE

BEN SHAFFER RECREATION Inc.
Serving NJ since 1921

PARK, PLAYGROUND & STREETScape SOLUTIONS

1-800-953-2021

www.benshaffer.com sales@benshaffer.com

DREAM * DESIGN * DELIVER

VICTOR  **STANLEY®**

Create a timeless moment.®