

**STERN
WILLIAMS**

DISTINCTIVE DRINKING FOUNTAINS



BEN SHAFFER RECREATION Inc.

Serving NJ since 1921



PARK, PLAYGROUND & STREETScape SOLUTIONS

1-800-953-2021

www.benshaffer.com

sales@benshaffer.com

DREAM * DESIGN * DELIVER

Designers & Manufacturers of:

Drinking Fountains

Outdoor Mistors

Outdoor Showers

Foot Showers

Pet Fountains

Jug Fillers & Hydrants

Water Bottle Fillers

METAL PEDESTAL DRINKING FOUNTAINS

The deep, rich Woodland Green color and scratch resistant finish make these fountains an excellent choice for playgrounds & recreational areas.



STANDARD FEATURES INCLUDE:

- Pedestal is fabricated from 3/16" wall steel pipe.
- A heavy duty chrome plated brass bubbler(s) locked to receptor protected by a vandal resistant steel guard(s).
- Push button chrome plated brass valve(s). Push button(s) recessed in 3/8" steel plate. Adjustable flow regulation.
- Welded bottom plate. Special drain tool supplied for maintenance.
- Heavy 3/8" sheet steel arm projecting from pedestal.
- 18 gauge brush finished stainless steel receptor with a vandal resistant chrome plated brass drain plug.
- Stainless steel supply fittings connected to code certified reinforced tubing.
- Woodland green Powder Coat finish. Optional colors, (no extra charge), shown on page 3.

BARRIER FREE FOUNTAINS SERIES

Designed to comply with ADA requirements and withstand the roughest conditions.

- 5400** Single with surface mount (shown)
 - 5400-FP** With freeze proof valve system
 - 5400-FPS** Sanifrost*
 - Dimensions:** 38-1/4"H x 10-3/4"W x 30-3/4"L
 - 5700** Dual with surface mount (shown)
 - 5700-FP** With freeze proof valve system
 - 5700-FPS** Sanifrost*
 - Dimensions:** 40"H x 10-3/4"W x 30-3/4"L
- *Note: Sanifrost see page 9

**Options: (Add Suffix)
Jug Fillers**



-31 self closing, lever handle



-36 Push button (non -FP models)
-34 Same, for -FP models

Hose Bibbs



-32 compression type, hose end and VB



-32-LK with loose key



-32-SC self closing



-35 Recessed only for Metal Fountains



-35-V.P. Recessed with Key Operated Shroud for Metal Fountains

Standard Color: Optional Colors:



Model 5700-90



Model 5925



Model 5325

MULTI PURPOSE BARRIER FREE

Designed to conform to the requirements of both adult and children's ADA Guidelines.

- 5925** Triple with surface mount (shown)
- 5925-FP** With freeze proof valve system
- Dimensions:** 40"H x 10-3/4"W x 50-3/4"L

CYLINDRICAL FOUNTAINS

Striking design with clean, sleek lines. Designed to defy the elements, resist vandals and stand up to hard use.

- 5325** Surface mount (shown)
- 5325-FP** With freeze proof valve system
- 5325-FPS** Sanifrost*
- Dimensions:** 36"H x 10-3/4"W x 14-1/2" Dia. base
- *Note:** Sanifrost see page 9

Options: (Add Suffix)
Plaque



-40 Commemorative plaque (3 lines max. You specify text.)

Stainless steel finish

-SS Clear Powder Coat is standard. Optional colors available

Valve Boxes



-85 In ground frost proof valve box with lid.



-87 Metal surface valve box.

Sand Traps



-95 High volume



-96 Sand Strainer Plate

Mounting Plate



-SMP-10 surface mounting plate

Pet Fountain



-90 attached Pet Fountain (see pg.8)
-90-FP Frost proof

Foot Spray



-37

Water Filter



-84 Water Filter
N/A W/-FP option

METAL PEDESTAL DRINKING FOUNTAINS

The deep, rich Woodland Green color and scratch resistant finish make these fountains an excellent choice for playgrounds & recreational areas.



Model 4700



Model 4300



Model 4400



Model 4430

CONTEMPORARY

Barrier free design complements today's architecture. ADA COMPLIANT.

- 4700** Single with surface mount.
- 4700-FP** With frost proof valve assembly
- Dimensions:** 34-3/4"H x 36"W with 12" Dia. Base
- Options:** -31, -32, -32-LK, -32-SC, -34, 34-FPS, -36, -37, -40, -84, -85, -87, -95, -96, SMP-10, -SS, (see descriptions on PG. 2 & 3)
- Colors:** Standard is green. Optional colors (see page 3)

ECONOMY PEDESTAL FOUNTAINS

Appropriate for playgrounds or any high traffic area where cost is a consideration. Standard features include chrome-plated brass bubbler, locked to stainless steel receptor.

- 4300** Self-closing chrome-plated lever valve handle and a 12" diameter floor flange gives it an exceptionally sturdy mounting base.
- Dimensions:** 35"H x 12" Dia. base
- Options:** Not available
- Colors:** Green only

- 4400** Push button bubbler. Surface mount (shown)
- Dimensions:** 36"H x 12" Dia. base
- 4430** Single with surface mount with Lever Handle bubbler (shown)
- Dimensions:** 36"H x 12" Dia. base
- Options:** (Add suffix)
 - 85** In ground valve box with lid
 - 87** Metal in ground valve box
 - 96** Sand Strainer Plate
 - SMP-6** Surface mounting plate
 - SS** Stainless Steel finish
- Colors:** Standard is green. Optional colors (see page 3)

DECK MOUNTED

DMF-620
Remote push button control permits the control to be placed in a more convenient location. Chrome-plated brass bubbler. Equipped with flow regulation. Stainless steel receptor. Steel mounting bracket adjusts to countertop thickness of 3/8" to 1-1/2". 3/8" IPS supply, 1-1/4" O.D. tailpiece.



DMF-610
The traditional choice. Push button operated, chrome-plated brass bubbler equipped with flow regulation. Stainless steel receptor. Steel mounting bracket adjusts to countertop thickness of 3/8" to 1-1/2". 3/8" IPS supply, 1-1/4" O.D. tailpiece.



Option: Remote electric chiller (WC-8). Conceal the refrigeration unit within the cabinet or wall.

BUBBLERS

Model A-310
Self-closing push button valve with adjustable flow regulation, 3/8" F.I.P.S. inlet.



A-310

Model A-330
Self-closing lever handle valve with flow regulation, 1/2" F.I.P.S. inlet.



A-330

CHILD HEIGHT METAL PEDESTAL DRINKING FOUNTAINS

This lower profile makes these fountains an excellent choice for daycare centers and preschools.

CHILD PEDESTAL DRINKING FOUNTAINS SERIES

Standard

5335 Single surface mount (shown)

5335-FP Freeze proof valve system

Dimensions: 24"H x 10-3/4"W

Barrier Free

5410* Single surface mount

5410-FP* Freeze proof valve system

Dimensions: 32-1/4"H x 10-3/4"W x 30-3/4"L

5710 Dual surface mount (shown)

5710-FP Freeze proof valve system

Dimensions: 35"H x 10-3/4"W x 30-3/4"L

Options: See page 2 & 3

***-TX4** Conforms to Texas (TAS) ages 4-11

***-TX11** Conforms to Texas (TAS) ages 11-15



Model 5335

Standard features include:

- Pedestal is fabricated from 3/16" wall steel pipe.
- A heavy duty chrome plated brass bubbler(s) locked to receptor protected by a vandal resistant steel guard(s).
- Push button chrome plated brass valve(s). Push button(s) recessed in 3/8" steel plate. Adjustable flow regulation.
- Heavy duty of 3/8" sheet steel arm projecting from pedestal.
- 18 gauge brush finished stainless steel receptor with a vandal resistant chrome plated brass drain plug.
- Stainless steel supply fittings connected to code certified reinforced tubing.
- Woodland green Powder Coat finish. Optional colors, (no extra charge), shown on page 3.



Model 5710

SAND SMART METAL PEDESTAL DRINKING FOUNTAINS

These fountains are an excellent choice where sand is prevalent at outdoor volleyball courts & waterfront recreational areas.

SAND SMART DRINKING FOUNTAINS SERIES

Designed to comply with ADA requirements and withstand the roughest conditions.

8400 Single surface mount (shown)

Dimensions: 38-1/4"H x 10-3/4"W x 30-3/4"L

8700 Dual surface mount (shown)

Dimensions: 38-1/4"H x 10-3/4"W x 61-1/2"L

Options: See page 2 & 3

SAND SMART

Additional Standard features include:

- Large capacity powder coated trench type drain with removable internal sediment bucket.
- Drains to an exterior drain by others.



Model 8400



Model 8700

AGGREGATE PEDESTAL DRINKING FOUNTAINS

All purpose fountains serve wheelchair users and the general public, too. Ideal for high traffic locations, aggregate outdoor fountains are rugged, beautiful and can withstand the most corrosive environmental conditions.

STANDARD FEATURES INCLUDE:

- Heavy duty chrome plated bubbler(s) locked to receptor(s).
- Vandal resistant chrome plated push button valve(s) with adjustable flow regulation.
- 18 gauge, brush finish stainless steel receptor(s) with vandal resistant chrome plated brass drain plug(s).
- Stainless steel supply fittings connected to code certified reinforced tubing.
- Supply complete with lock shield type screw driver stop for easy maintenance.
- 1-1/4" PVC waste
- In-line mesh screen strainer
- Vandal resistant access plate(s)



APF-3501-Q
Quiet Creek



ADF-3701-C
Colorama

SERIES APF-3500

ADA compliant - Single bubbler

- APF-3500-C** Colorama, light etched
- APF-3500-FC** With freeze proof valve system
- APF-3500-FPSC** Sanifrost*
- APF-3501-C** Colorama, medium etched
- APF-3501-FC** With freeze proof valve system
- APF-3501-FPSC** Sanifrost*
- APF-3500-Q** Quiet Creek, light etched
- APF-3500-FQ** With freeze proof valve system
- APF-3500-FPSQ** Sanifrost*
- APF-3501-Q** Quiet Creek, medium etched (shown)
- APF-3501-FQ** With freeze proof valve system
- APF-3501-FPSQ** Sanifrost*
- Dimensions:** 35"H x 12"W x 30"L with 15" square base

*Note: Sanifrost see page 9

SERIES ADF-3700

ADA compliant - Dual bubbler

- ADF-3700-C** Colorama, light etched
- ADF-3700-FC** With freeze proof valve system
- ADF-3700-FPSC** Sanifrost*
- ADF-3701-C** Colorama, medium etched (shown)
- ADF-3701-FC** With freeze proof valve system
- ADF-3701-FPSC** Sanifrost*
- ADF-3700-Q** Quiet Creek, light etched
- ADF-3700-FQ** With freeze proof valve system
- ADF-3700-FPSQ** Sanifrost*
- ADF-3701-Q** Quiet Creek, medium etched
- ADF-3701-FQ** With freeze proof valve system
- ADF-3701-FPSQ** Sanifrost*
- Dimensions:** 40"H x 12"W x 30"L with 15" square base

*Note: Sanifrost see page 9

Options: (Add Suffix)

Jug Fillers



-31 Self closing, plain end



-36 (Non -FP models)

-34 Same, for -FP models

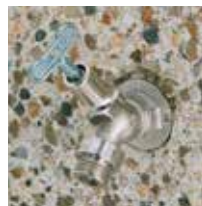
Hose Bibbs



-32 Compression type hose end and VB



-33-VP with key operated shroud



-32-LK With loose key

Foot Spray



-37

Plaque



-40 Commemorative plaque (3 lines max. You specify text.)

Water Filter



-84 Water Filter N/A W/-FP option



Colorama, Light Etched



Quiet Creek, Light Etched



Colorama, Medium Etched



Quiet Creek, Medium Etched



ADF-3901-C



SPF-3101-Q



RPF-3000-C

SERIES ADF-3900

Triple bubbler

- ADF-3900-C** Colorama, light etched
- ADF-3900-FC** Freeze-proof valve
- ADF-3901-C** Colorama, medium etched (shown)
- ADF-3901-FC** Freeze-proof valve
- ADF-3900-Q** Quiet Creek, light etched
- ADF-3900-FQ** Freeze-proof valve
- ADF-3901-Q** Quiet Creek, medium etched
- ADF-3901-FQ** Freeze-proof valve
- Dimensions:** 40"H x 12"W x 48"L with 15" square base

SQUARE PEDESTAL FOUNTAINS

- SPF-3100-C** Colorama, light etched
- SPF-3100-FC** With freeze proof valve system
- SPF-3100-FPSC** Sanifrost*
- SPF-3101-C** Colorama, medium etched
- SPF-3101-FC** With freeze proof valve system
- SPF-3101-FPSC** Sanifrost*
- SPF-3100-Q** Quiet Creek, light etched
- SPF-3100-FQ** With freeze proof valve system
- SPF-3100-FPSQ** Sanifrost*
- SPF-3101-Q** Quiet Creek, medium etched (shown)
- SPF-3101-FQ** With freeze proof valve system
- SPF-3101-FPSQ** Sanifrost*
- Dimensions:** 12" W X 12" L Height: 36"
- *Note:** Sanifrost see page 9

ROUND PEDESTAL FOUNTAINS

- RPF-3000-C** Colorama, light etched (shown)
- RPF-3000-FC** With freeze proof valve system
- RPF-3000-FPSC** Sanifrost*
- RPF-3001-C** Colorama, medium etched
- RPF-3001-FC** With freeze proof valve system
- RPF-3001-FPSC** Sanifrost*
- RPF-3000-Q** Quiet Creek, light etched
- RPF-3000-FQ** With freeze proof valve system
- RPF-3000-FPSQ** Sanifrost*
- RPF-3001-Q** Quiet Creek, medium etched
- RPF-3001-FQ** With freeze proof valve system
- RPF-3001-FPSQ** Sanifrost*
- Dimensions:** 12" Diameter Height: 36"
- *Note:** Sanifrost see page 9

Options: (Add Suffix)

Mounting Plate



-SMP-12R (RPF series)



-SMP-12S square surface mounting plate (ADF & APF series)

-SMP-12SQ (SPF series)

Pet Fountain



-94 Pet Fountain
-94-FP Frost Proof (See page 8)

Aggregate Step



-60 Round fountain type



-65 Square fountain type

Matching Chilling Unit



-75 (ADF, APF and SPF series only)

Sand Trap



-95 High volume



-96 Sand Strainer Plate

Valve Box



-85 In Ground frost proof valve box with lid. (Shown)

-87 Metal surface valve box

SS Bubbler Guard

-42 SS Bubbler Guard (ADF, APF, WDF-1000 & WDF-1050 only)



PEDESTAL PET DRINKING FOUNTAINS

These fountains make an excellent choice for resorts, walking trails and recreational areas where pets are welcome. Pet Fountains designed to comply with pet needs and withstand the roughest conditions.



Model 9000

(Shown in optional blue)



Model 5325-90



APF-3500-C-94

MODEL 9000 & 9002 PET FOUNTAINS:

Standard features include:

- Pedestals are fabricated from steel pipe.
- Heavy duty brushed aluminum spout is locked to stainless steel receptor and protected with vandal resistant steel guard.
- Recessed self-closing push button valve with stream adjustment.
- Slow draining pet fountain, 18 gauge stainless steel receptor with pebble guard drain.
- Woodland Green Polyester Powder Coat finish. Optional colors available. (See page 3)

- 9000** Surface mount (shown)
- 9000-FP** Frost proof
- 9000-66-SS** Surface mount W/Hose & Self Closing Hose Bibb
- 9002** Dual height
- 9002-FP** Frost proof
- Options:** (add suffix)
- 98** Leash hook
- SMP-6** Surface mounting plate
- SS** Stainless steel finish
- 40** Plaque
- 32-SC** Self Closing Hose Bibb

METAL DRINKING FOUNTAINS SERIES -90 ATTACHED PET FOUNTAINS

- 5325-90** Standard fountain & pet fountain (shown)
- 5400-90** Barrier free fountain & pet fountain (shown)
- 5700-90** Dual barrier free fountain & pet fountain (see page 3)
- 5925-90** Triple barrier free fountain & pet fountain
- Options:** See page 2 & 3
- FP** Frost proof

AGGREGATE DRINKING FOUNTAINS SERIES -94 ATTACHED PET FOUNTAINS

- SPF-3100-94** Standard (shown)
- APF-3500-94** Barrier free (shown)
- ADF-3700-94** Dual barrier free
- ADF-3900-94** Triple barrier free
- Note:** Specify color. Colorama or Quiet Creek. See page 7
- Options:** See page 6 & 7
- FP** Frost proof



Model 5400-90



SPF-3100-C-94



Model 9002



Model 9000-66-SS



Model 9000-92

PET FOUNTAIN WITH SPRAY

Timer controlled vandal resistant recessed pet spray head.

- 9000-92** Surface mount (shown)

OUTDOOR REFRESHMENT FOR ALL SEASONS

WALL MOUNTED FOUNTAINS - FROST PROOF



Model 5300-FP

Exterior Wall



FP box as it appears on the inside wall

Note: Requires installation on an inside wall directly behind the fountain with a minimum room temperature of 50 F (10 C)



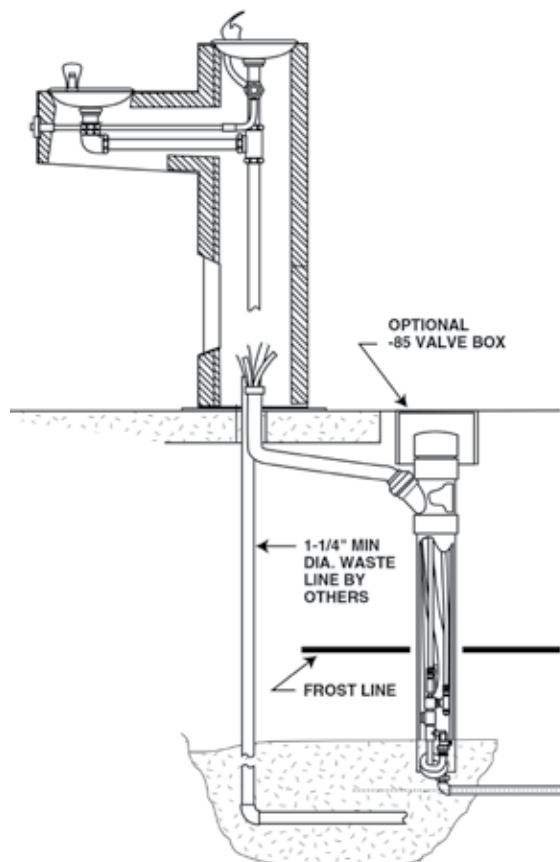
Model BF-5020-FP

Exterior Wall

PEDESTAL DRINKING FOUNTAINS - FROST PROOF

STANDARD

(Add suffix-FP)



SANIFROST

(Add suffix-FPS)

A patented environment friendly freeze-proof valve system that has no weep hole or pump system. Ideal for high water table or inadequate site drainage applications.

Features:

- Sanitary, will not allow stored water to re-enter the bubbler.
- Prevents cross contamination of water supply with ground water.
- Minimal amount of water wasted.

STAINLESS STEEL

Wall-Mounted Drinking Fountains. Lustrous 18 gauge, type 304 brushed stainless steel finish.



BF-5020



BF-5000

SINGLE LEVEL DESIGNS

Barrier Free

BF-5020 BEVEL FRONT single level with push button on front panel. With back plate and vandal resistant bottom plate and mounting plate.

BF-5020-FP With FREEZE-PROOF valve system.

Dimensions: 9-5/8"H x 19"W with 18-1/2" extension

BF-5040 Without back plate.

BF-5040-FP With FREEZE-PROOF valve system.

Dimensions: 7"H x 12"W with 18" extension



BF-5040

DUAL LEVEL DESIGNS

BF-5000 Push button control on BEVELED FRONT panels. Attractive, protective stainless steel back plate. Vandal resistant bottom plates and mounting plates are standard.

BF-5000-FP With FREEZE-PROOF valve system.

Dimensions: 14-7/8"H x 35"W with 18-1/2" extension

Option: Cane touch apron for ADA protruding objects compliance **BFCA-1**

-RV Reverse Heights

STANDARD

Push button control located on front panel. Choice of models with or without protective back plate. Vandal resistant bottom plate and mounting plate are standard.

SF-5100 With stainless steel back plate

SF-5100-FP With FREEZE-PROOF valve system.

Dimensions: 9-5/8"H x 19"W with 13" extension



SF-5100

SF-5110 Without back plate

SF-5110-FP With FREEZE-PROOF valve system.

Dimensions: 7"H x 12"W with 12-1/2" extension

(FP) Freeze proof valve system for fountain to be mounted on exterior wall of building. (See page 9)



SF-5110

WILLIAMS fountains are known for dependability. All models feature chrome-plated brass bubblers and are equipped with automatic flow regulation.

REFRIGERATED STAINLESS STEEL DRINKING FOUNTAINS



BFR-6000

BARRIER FREE

- BFR-6000** 8.0 gph dual level with push button on the front panel.
- BFR-6025** 8.0 gph dual level, sensor operated.
- Dimensions:** 35-7/8"H x 35"W with 18-1/2" extension. Recesses into wall: 12"
- Mounting frame:** BFMF-2 (Standard)
- OPTION** Cane touch apron for ADA protruding objects compliance **BFCA-1**
- RV** Reverse Heights

MOUNTING FRAMES (Standard)



BFMF-1



BFMF-2



BFR-6050

BARRIER FREE

- Push button on front panel.
- BFR-6050** With traditional BEVELED Front 8.0 gph
- Dimensions:** 33-1/2"H x 19"W with 18-1/2" extension. Recesses into wall: 12"
- Mounting Frame:** BFMF-1 (Standard)



BFR-6075

BARRIER FREE

- Sensor operated. Uses standard 110V, 60-cycle electrical connection. U.L. listed.
- BFR-6075** 8.0 gph
- Dimensions:** 33-1/2"H x 19"W with 18-1/2" extension. Recesses into wall: 12"
- Mounting Frame:** BFMF-1 (Standard)

WALL MOUNTED FOUNTAINS

Wall-Mounted Drinking Fountains. Specify Metal for a contemporary touch and durability.



Model 5300

SERIES 5300 BARRIER FREE

- 5300** Wall mounted (shown)
5300-FP With freeze-proof valve system
Dimensions: 8"H x 20"L.
Options:
FLWMP-1 Support carrier w/mounting plate (Shown)
WMP-1 Mounting plate
-SS Stainless steel finish
Color: Standard is green
 Optional colors see page 3.



FLWMP-1



Model 5315

SERIES 5315 BARRIER FREE

- 5315** Dual wall mounted with backplate (shown)
5315-FP With freeze-proof valve system
Dimensions: 13"H x 20"L.
Options:
BFCA-15 Cane Apron
FLWMP-2 Support carrier w/mounting plate
WMP-2 Mounting plate
-RV Reverse Heights
FLWMP-2-RV Support carrier w/mounting plate
WMP-2RV Mounting plate
-SS Stainless steel finish
Color: Standard is green
 Optional colors see page 3.



Model 5400-MWL

PEDESTAL WALL MOUNT

Standard features include:

- Conceals existing plumbing
- Wall mounted with the added stability of a pedestal.

- 5400-MWL** Wall mounted (shown)
5400-MWL-FP With freeze-proof valve system
Dimensions: 38-1/4"H x 5-3/8" W x 25-3/8"L
5725-MWL Dual wall mounted (shown)
Dimensions: 43-1/4"H x 5-3/8" W x 25-3/8"L
Color: Standard is green
 Optional colors see page 3.
Options: (See pages 2 & 3)
-RV Reverse Heights



Model 5725-MWL

BRACKET FOUNTAINS

Dependability and convenience at minimum cost. Chrome-plated bubbler, stainless steel receptor. Equipped with automatic flow regulation. Bracket of rugged aluminum. 3/8" IPS supply, 1-1/4" IPS waste.

- Dimensions:** 9-7/8" Dia.
WDF-1020 With polished chrome-plated self-closing lever handle valve
WDF-1025 With push button operated bubbler



WDF-1020



WDF-1025

TERRAZZO WALL MOUNTED FOUNTAINS

Specify Terrazzo for a touch of Old World elegance and durability. Marble chips in warm rich colors give Terrazzo a bejeweled appearance that enhances any setting.

STANDARD FEATURES INCLUDE:

- A heavy duty chrome plated bubbler locked to receptor.
- Vandal resistant chrome plated push button with adjustable flow regulation.
- 18 gauge, brush finish stainless steel receptor.
- Heavy duty steel mounting plate cast integral.
- Vandal resistant bottom plate.

Choice of eight beautiful Terrazzo colors at no additional cost.



WDF-1000-AW
Antique White



WDF-1050-OB
Oxblood

SERIES WDF-1000

Standard

Please specify color. Model number indicates finish.

WDF-1000 Polished smooth (shown above)

WDF-1001 Light etched

Dimensions: 10"H x 12"W x 12-7/8"L.

WDF-1000-FP W/FP valve system

WDF-1001-FP W/FP valve system

SERIES WDF-1050

Barrier Free

Please specify color. Model number indicates finish.

WDF-1050 Polished smooth (shown above)

WDF-1051 Light etched

Dimensions: 10-7/8"H x 12"W x 22"L

WDF-1050-FP W/FP valve system

WDF-1051-FP W/FP valve system



Putty



Smoke



Silvertone



Cactus Green



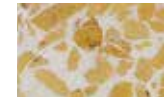
Alpine Green



Antique White



Oxblood



Antique Gold

AGGREGATE WALL FOUNTAIN



WDF-1060

SERIES WDF-1060

Barrier Free

Cascading river stones and aggregate provide color, texture and beauty.

Color: Specify color from page 7.

WDF-1060 Light etched

WDF-1061 Medium etched

Dimensions: 9-1/2"H x 14"W x 19-3/4"L.

WDF-1060-FP W/FP valve system

WDF-1061-FP W/FP valve system

POLYMARBLE



WDF-1040

WDF-1040

Standard

Ultra-smooth finish and fluid lines. The material is fused from refined white marble powder and poly resin, producing a pure white color throughout. Chrome-plated brass bubbler. Equipped with flow regulation, push button valve. Vandal resistant stainless steel bottom cover plate.

WDF-1040-FP W/FP valve system

Dimensions: 15"H x 14-1/4"W x 12-1/4"L.

REFRIGERATED PEDESTAL DRINKING FOUNTAINS

Delivers 8.0 GPH of outdoor chilled water refreshment.



Model 5780

METAL PEDESTAL FOUNTAINS

Polyester Powder Coated Metal Pipe Type. Standard color is Woodland Green. Optional colors available. (See page 3)

Available in single, double or triple bubbler styles.

- 5380** Standard, Single bubbler. (shown)
- 5480** Handicap accessible. Single bubbler.
- 5780** Handicap accessible. Dual bubbler. (Shown)
- 5980** Handicap and child accessible. Triple bubbler.

Dimensions: 18" Dia. with 22-1/2" Dia. base plate

Metal Options: (Add suffix) See pages 2 & 3

SMP-18 Surface mounting plate



-SMP-18 round surface mounting plate



Model 5380



SPFR-3100-C



SPFR-3781-C Colorama

AGGREGATE FOUNTAINS

Standard Chilled Pedestal Fountains.

- SPFR-3100-C** Colorama, light etched (shown)
- SPFR-3101-C** Colorama, medium etched
- SPFR-3100-Q** Quiet Creek, light etched
- SPFR-3101-Q** Quiet Creek, medium etched

Dimensions: 20"W with 24" base, Height: 36"

Aggregate Options: (Add suffix) See pages 6 & 7

SMP-24 Surface mounting plate

All purpose pedestal fountains, ADA Compliant Chilled Pedestal Fountain. Dual bubbler in Aggregate finish. Delivers 8.0 GPH of chilled water.

- SPFR-3780-C** Colorama, light etched
- SPFR-3781-C** Colorama, medium etched (shown)

SPFR-3780-Q Quiet Creek, light etched

SPFR-3781-Q Quiet Creek, medium etched

Dimensions: 20"W with 24" base, Height: 40"

Mounting Plate



-SMP-24 square surface mounting plate

DRINKING FOUNTAIN WITH OUTDOOR SHOWERS

Model 6600 & 6650 Drinking Fountain with Shower & Foot Shower.

Standard features include:

- Recessed self-closing push button valve with stream adjustment.
- Chrome plated bubbler locked to stainless steel bowl.
- Vandal resistant drain and steel bubbler guard.
- ADA compliant heavy sheet steel arm projecting from pedestal.
- Welded bottom plate. Special tool supplied for maintenance.

6600 Surface mount (shown)

6650 Sand Smart - Surface mount (shown)

Dimensions:

6600 80"H x 26-5/8"W x 6-5/8"Dia.

6650 80"H x 26-5/8"W x 6-5/8"Dia.

Options: (Add Suffix)

-96 Sand strainer plate (N/A 6650)

-SS Stainless Steel

SMP-6 Surface mounting plate

Note: Metering Valve is Standard



Mounting Plate



-SMP-6 round surface mounting plate

Model 6600

SAND SMART DRINKING FOUNTAIN WITH OUTDOOR SHOWERS



ADDITIONAL STANDARD FEATURES INCLUDE:

- Large capacity powder coated trench type drain with removable internal sediment bucket.
- Drains to an external drain by others.

Model 6650

METAL PEDESTAL OUTDOOR SHOWERS

The deep, rich Sky Blue color and scratch resistant finish make these showers an excellent choice for resorts, playgrounds and recreational areas.



Model 6200



Model 6200-SS
(Stainless Steel)



Model 6400



Model 6800

OUTDOOR SHOWERS

Designed to comply to the roughest conditions.

Standard features include:

- Column is fabricated from one piece steel pipe.
- All exposed parts are recessed in welded steel plates.
- Heavy duty, vandal resistant spray heads.
- Timer controlled, low maintenance water control valves.
- Vandal resistant access plates for easy maintenance.

- Sky Blue Powder Coat finish. Optional colors (see pg. 3) and stainless steel finish available.
- Surface mounting plate welded to pedestal.

- Options:** (Add Suffix)
- SS Stainless Steel
 - 32 Hose Bibb
 - 35-VP w/locking cover
 - SMP-6 Surface mounting plate

Model 6200 Body & Foot Shower:

6200 Surface mount (shown)

Dimensions:

6200 80"H x 6-5/8"Dia.

Model 6400 Dual Body & Dual Foot Shower:

6400 Surface mount (shown)

Dimensions:

6400 80"H x 6-5/8"Dia.

Model 6800 and Model 6815 (All heads are on same side). All purpose wheelchair accessible shower & foot shower:

6800 Surface mount (shown)

Dimensions:

6800 80"H x 6-5/8" Dia.

Options: (Add Suffix)

SMP-6 Surface mounting plate

AGGREGATE PEDESTAL OUTDOOR SHOWERS



Model 6825



Model 6850



Model 6875



Model RPS-6200-C

Model 6825 & 6835 (All heads are on same side). All purpose wheel-chair accessible shower and foot shower w/Grab Bars:

6825 Surface mount (shown)

Dimensions:

6825 80"H x 6-5/8"Dia.

Model 6850 Triple Shower:

6850 Surface mount (shown)

Dimensions:

6850 80"H x 6-5/8"Dia.

Model 6875 Quad Shower:

6875 Surface mount (shown)

Dimensions:

6875 84"H x 6-5/8"Dia.

AGGREGATE PEDESTAL OUTDOOR SHOWERS

Designed to withstand to the most corrosive environmental conditions.

Standard features include:

- Light etched finish.
- Two color choices. See page 7.

- Heavy duty, vandal resistant spray heads.
- Timer controlled, low maintenance water control valves.

Model RPS-6200 Body & Foot Shower:

RPS-6200-C Colorama (shown)

RPS-6200-Q Quiet Creek

Model RPS-6400 Dual Body & Dual Foot Shower:

RPS-6400-C

RPS-6400-Q

Model RPS-6800 Wheel Chair Accessible Shower & Foot Shower:

RPS-6800-C

RPS-6800-Q

Model RPS-6850 Triple Shower:

RPS-6850-C

RPS-6850-Q

Dimensions: 80"H x 12"Dia.

Options: (Add Suffix)

SMP-12R Surface mounting plate

METAL PEDESTAL OUTDOOR MISTER

The deep, rich Sky Blue color and scratch resistant finish make these showers an excellent choice for resorts, playgrounds and recreational areas.



Model 6425



Model 6450



Model 6475-SS

Mounting Plate



-SMP-6 round surface mounting plate

OUTDOOR MISTER

Standard features include:

- Column is fabricated from one piece steel pipe.
- All exposed parts are recessed in welded steel plates.
- Vandal resistant 10 mist heads on 6425, 8 heads on 6450. Four heads on Drinking Fountain type 6475 and 6495.
- Timer controlled, low maintenance water control valve.
- Vandal resistant access plates for easy maintenance.

- Sky Blue Powder Coat finish. Optional colors (see pg. 3) and stainless steel finish available.
- Surface mounting plate welded to pedestal.

Model 6425:
6425 Surface Mount (Shown)
Dimensions:
6425 88"H x 6-5/8" Dia

Options: (Add Suffix)
-SS Stainless Steel
SMP-6 Surface mounting plate
Note: Metering Valve is Standard

Model 6450 Outdoor Mister:
6450 Surface mount (shown)
Dimensions:
6450 84"H x 6-5/8" Dia.

Model 6475 & 6495 Outdoor Mister and Drinking Fountains:
6475 Surface mount (shown)
6495 Dual Fountain
Dimensions:
6475 84"H x 26-5/8"W x 6-5/8" Dia.
6495 98"H x 26-5/8"W x 6-5/8" Dia.

Options: (Add Suffix)
-96 Sand strainer plate
-SS Stainless Steel

SMP-6 Surface mounting plate
Note: Metering Valve is Standard

Additional standard features include:

- Recessed self-closing push button valve with outside stream adjustment.
- Chrome plated bubbler locked to stainless steel bowl.
- Vandal resistant drain and steel bubbler guard.
- ADA compliant heavy sheet steel arm projecting from pedestal.
- Welded bottom plate. Special tool supplied for maintenance.

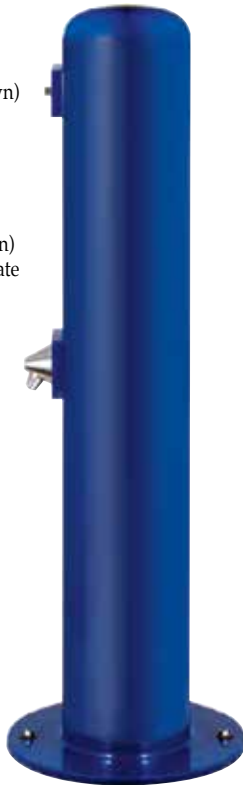
FOOT WASH SHOWERS

METAL

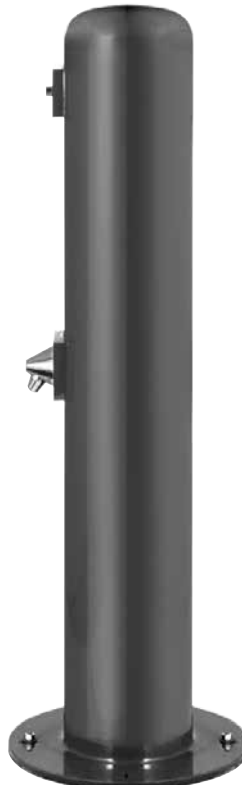
- Model 6000 Foot Shower:**
6000 Surface mount (shown)
6000-MWL Wall mount (shown)
Dimensions:
6000 32"H x 6-5/8"Dia.
6000-MWL 8"H x 8"W.
Options: (Add Suffix)
-SS Stainless Steel (shown)
SMP-6 Surface mounting plate



Model 6000-MWL



Model 6000



Model 6000-SS
(Stainless Steel)

JUG FILLERS

Self closing chrome plated valve with chrome plated vandal resistant filler spout.

METAL

- Model 7000 Series Jug Fillers:**
7000-31 Surface mount - lever handle
7000-34 Surface mount - frost proof
7000-34 FPS Surface mount - Sanifrost*
Dimensions: 32"H x 4-1/2" Dia.
7000-36 Surface mount - push button (Shown)
Dimensions: 32"H x 6-5/8" Dia.
7000-36-WML Wall Mount (Shown)
Dimensions: 8"H x 8"W
7100-31 In ground bury - lever handle
Dimensions: 46"H x 4-1/2" Dia.
7100-36 In ground bury - push button
Dimensions: 46"H x 6-5/8" Dia.
Options: (Add Suffix)
-SS Stainless steel
SMP-6 Surface mounting plate
***Note:** Sanifrost see page 9



Model 7000-36



Model 7000-36-MWL

PEDESTAL HOSE BIBB

Rough chrome plated compression type, standard hose end and vacuum breaker.

METAL

- 7000-32** Surface mount (shown)
7000-32-VP Same with key operated shroud (shown)
7000-35-VP Recessed w/ key operated shroud
7100-32 In ground bury
7100-32-VP Same with key operated shroud
7100-35-VP Recessed with key operated shroud
Dimensions:
7000-32 32"H x 4-1/2" Dia.
7100-32 46"H x 4-1/2" Dia.
7000-32-VP 32"H x 6-5/8" Dia.
7100-32-VP 46"H x 6-5/8" Dia.
7000-35-VP 32"H x 6-5/8" Dia.
7100-35-VP 46"H x 6-5/8" Dia.

Options:

- SS** Stainless Steel
SMP-6 Surface mounting plate



Model 7000-32-VP



Model 7000-32

WATER BOTTLE FILLERS

STANDARD FEATURES INCLUDE:

- Pedestal is fabricated from 3/16" wall steel pipe.
- Heavy duty chrome plated brass bubbler(s).
- Steel Bubbler Guard(s).
- Brushed aluminum filler spout.
- Push button chrome plated brass valve(s). Push button(s) recessed in 3/8" steel plate. Adjustable flow regulation.
- Heavy 3/8" sheet steel arm projecting from pedestal.
- Powder coated metal receptor on bottle fillers.
- 18 gauge brush finished stainless steel receptor on Drinking Fountain(s).
- Chrome plated brass drain plug(s).
- In-line water filter
- Stainless steel supply fittings connected to code certified reinforced tubing.
- Woodland green Powder Coat finish. Optional colors, (no extra charge), shown on page 3.



Model 7300



Model 7325



Model 7700

WATER BOTTLE FILLERS

- 7300** Wall mounted
Dimensions: 27"H x 20"L
7325 Single pedestal
Dimensions: 59"H x 6-5/8" Dia.

WATER BOTTLE FILLERS WITH DRINKING FOUNTAINS

- 7700** Water Bottle Filler and Drinking Fountain
Dimensions: 59"H x 10-3/4"W x 30-3/4" L
7700-90 Same as above with attached Pet Fountain
Dimensions: 59"H x 10-3/4"W x 30-3/4" L
7925 Dual Drinking Fountain and Water Bottle Filler
Dimensions: 59"H x 10-3/4"W x 50-3/4" L
Options: (See pages 2 & 3)
Note: -FP Option W/O Water Filter



Model 7925



Model 7700-90

CUSTOMIZED PRODUCTS

Our engineering department welcomes your request for special needs outdoor water products. Please contact us for a quotation.

BEN SHAFFER
Recreation Inc.



PARK, PLAYGROUND & STREETScape SOLUTIONS

Serving NJ since 1921

P. O. Box 844
Lake Hopatcong, NJ 07849

1-800-953-2021

sales@benshaffer.com

www.benshaffer.com